

FRANKLY
AMSTERDAM





Pattern A

DAY LIGHT PATTERN

| | |
|---------------------|---|
| Available as | Rug, wall to wall |
| Design | Frankly Amsterdam |
| Size | Any size possible |
| Weight | 5500 gr/m ² |
| Height | Pattern A 14/17 mm Pattern B 14/18 mm Pattern C 14/20 mm Pattern D (Low 14/20 mm or High 20/14 mm) |
| Technique | Handtufted |
| Colors | 10 Standard colors + 77 uni colors |
| Color design | Christiane Müller |
| Material | 100% Bamboo |
| Fire classification | Cfl-s1 |
| Advantages | + European production + any size, pattern and shape possible + choose your own color + anti-bacterial and suitable for people with allergies |

www.frankly.amsterdam | T + 31 (0) 20 737 0818

Our Day Light Pattern series feature soft line work that feels clean and organized. This is an ode to a thousands year old craft and the people that master it. Like running your fingers through earth, the lines are hand tufted in two different heights. The yarn is glossy and almost velvet looking. Day Light is all about new beginnings and growth. And so is Bamboo. This grass grows faster than the speed of light and provides more oxygen than trees. Harvesting doesn't damage the soil and our entire production process is closed-loop.

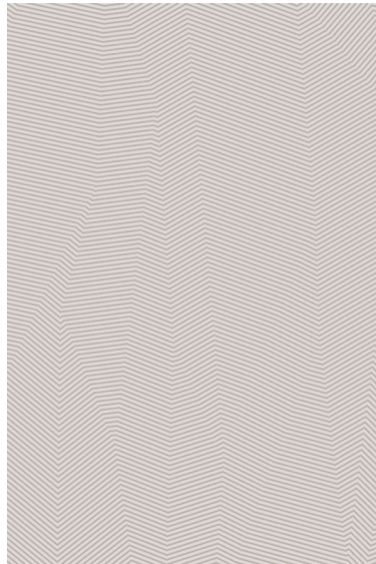
Bambo yarn is a quality yarn suitable for residential use. Being tufted by hand, it can be made to measure in any shape and size desired. Like all of our products, Day Light pattern is of European production. Available in three standard patterns or a customized one. In any color from our Bamboo box.



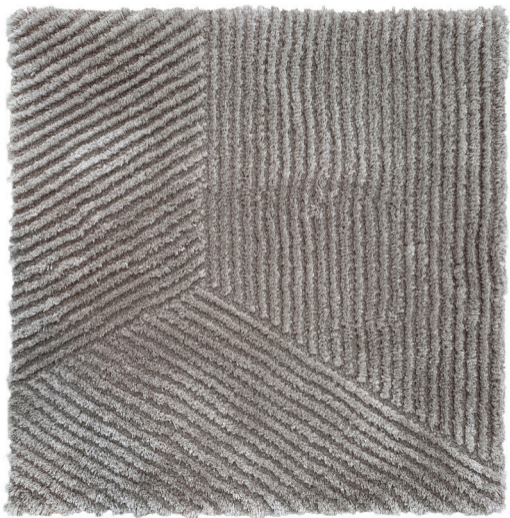
Bamboo color box



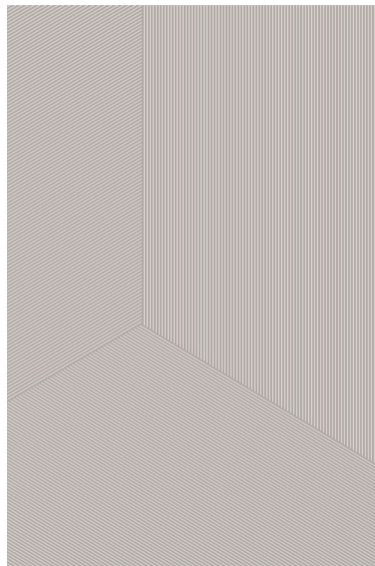
Pattern A (50 x 50 cm)



200 x 300 cm



Pattern B (50 x 50 cm)



200 x 300 cm



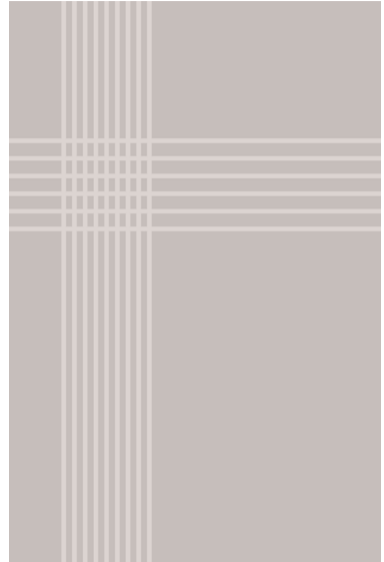
Pattern C (50 x 50 cm)



200 x 300 cm



Pattern D Low (50 x 50 cm)



200 x 300 cm



Pattern D High (50 x 50 cm)



200 x 300 cm

CARE INSTRUCTIONS

- We advise you to **vacuum** the rug once or twice a week with a normal (upright or cylinder) vacuum cleaner but without the brush or beater bar engaged. Rugs with a high pile need to be vacuumed even more often.
- Do not use a vacuumer with a rotating brush, this will damage the yarn.
- Rugs made from natural materials are subject to some **pilling** during the first few months. This is a common characteristic of natural cut fibers and will disappear after 3 or 4 months of normal use.
- A dry environment can result in extra pilling of the yarn. A **humidity** between 50-70% will benefit the lifecycle of your rug.
- In order to avoid '**regular use marks**', we advise you to turn the rug every once in a while.
- **Wet stains** need to be removed immediately, before the yarn absorbs the fluid. Absorb the stain using a strong absorbing paper (like kitchen paper). Do not, in any case, rub the rug when wet. This can damage the fibers and the structure of the rug.
- **Light stains** can safely be treated with JAMES cleaning agents, which have been successfully tested on our products. Please follow the instructions of the JAMES staindisc delivered with the James starter kit. Treating stains within 24 hours increases the possibility of successful stain removal, nevertheless, complete removal can never be

guaranteed. The usage of a cleaning agent that is not tested on our products cannot be guaranteed for safe cleaning.

- Please do not use highly acidic cleaning agents to remove stains from your rug. This will cause discoloration of the yarn.
- In case of **heavy staining** or transferred dirt, we advise you to always have your Bamboo rug dry cleaned by a specialist in rug cleaning. Please state clearly that this rug needs to be cleaned without using water.
- When in **doubt**, please don't hesitate to contact us, or take a look at www.frankly.amsterdam/careinstructions for more information.

WARRANTY

- Frankly Amsterdam **guarantees** its rugs for 2 years of normal use.
- All our products are made with care. In case a **manufacturing defect** escaped our attention, please inform us within 14 days after delivery and leave the product unused.
- Small differences or **irregularities** in color, weft or size may occur. This is inherent to the use of natural fibers and has to be accepted when within normal commercial tolerances.
- Frankly Amsterdam will not accept any complaint if shading is concerned.

