

FRANKLY  
AMSTERDAM





## SHOW OFF

|                     |  |
|---------------------|--|
| Available as        | Rug, wall-to-wall, (stair)runner   |
| Design              | Frankly Amsterdam  |
| Size                | Any size possible  |
| Weight              | 5700 gr/m <sup>2</sup>   |
| Height              | 40 mm  |
| Technique           | Hand tufted  |
| Colors              | 9 Standard colors + any custom color   |
| Color design        | Christiane Müller  |
| Material            | 50% Mohair, 50% Bamboo   |
| Fire classification | Mohair Bfl-s1, Bamboo Cfl-s1   |
| Advantages          | + suitable for residential as well as soft contract<br>+ any size and shape possible<br>+ choose your own color (see Mohair and Bamboo color box)<br>+ environmentally friendly & sustainable<br>+ long-lasting & fire retardent |

High, higher, highest. With a pile height of 40 mm, it is no coincidence that this rug is called Show Off. The combination of Mohair and Bamboo yarn gives a luscious look that deserves everyone's attention. Being tufted by hand, this rug is made to measure any shape and size you desire. Show Off comes in 9 colors varying from cool to warm tones.

On top of that Bamboo is biodegradable and easily renewable. It's one of the fastest growing plants on the planet, meaning it can be harvested without risking deforestation. Production of Bamboo yarn is a 100% closed-loop cycle, so Show Off is both environmental friendly and a treat for the eyes. Available in 9 selected colors, special colors on request.



5601



5602



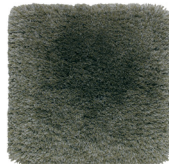
5603



5604



5605



5606



5607



5608



5609

## CARE INSTRUCTIONS

- We advise you to **vacuum** the rug once or twice a week with a normal (upright or cylinder) vacuum cleaner but without the brush or beater bar engaged. Rugs with a high pile need to be vacuumed even more often.
- Do not use a vacuumer with a rotating brush, this will damage the yarn.
- Rugs made from natural materials are subject to some **pilling** during the first few months. This is a common characteristic of natural cut fibers and will disappear after 3 or 4 months of normal use.
- A dry environment can result in extra pilling of the yarn. A **humidity** between 50-70% will benefit the lifecycle of your rug.
- In order to avoid '**regular use marks**', we advise you to turn the rug every once in a while.
- **Wet stains** need to be removed immediately, before the yarn absorbs the fluid. Absorb the stain using a strong absorbing paper (like kitchen paper). Do not, in any case, rub the rug when wet. This can damage the fibers and the structure of the rug.
- **Light stains** can safely be treated with JAMES cleaning agents, which have been successfully tested on our products. Please follow the instructions of the JAMES staindisc delivered with the James starter kit. Treating stains within 24 hours increases the possibility of successful stain removal, nevertheless, complete removal can never be

guaranteed. The usage of a cleaning agent that is not tested on our products cannot be guaranteed for safe cleaning.

- Please do not use highly acidic cleaning agents to remove stains from your rug. This will cause discoloration of the yarn.
- In case of **heavy staining** or transferred dirt, we advise you to always have your rug dry cleaned by a specialist in rug cleaning. Please state clearly that this rug needs to be cleaned without using water.
- When in **doubt**, please don't hesitate to contact us, or take a look at [www.frankly.amsterdam/careinstructions](http://www.frankly.amsterdam/careinstructions) for more information.

## WARRANTY

- Frankly Amsterdam **guarantees** its rugs for 2 years of normal use.
- All our products are made with care. In case a **manufacturing defect** escaped our attention, please inform us within 14 days after delivery and leave the product unused.
- Small differences or **irregularities** in color, weft or size may occur. This is inherent to the use of natural fibers and has to be accepted when within normal commercial tolerances.
- Frankly Amsterdam will not accept any complaint if shading is concerned.

