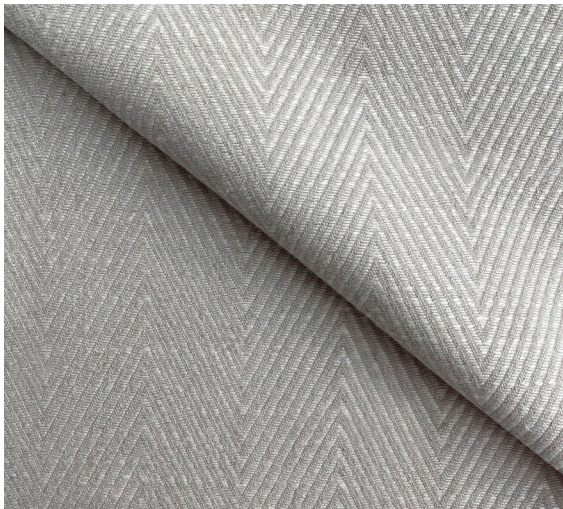


FRANKLY
AMSTERDAM





RE CHARGE

Available as	Light upholstery
Width	140 cm
Weight	440 gr/m ²
Composition	51% linen, 34% viscose, 10% cotton, 5% polyester
Colors	3 standard colors 1, 2, 3

Care instructions



Martindale

30.000

Pilling

2/3

Note

+ dry cleaning is advised
+ due to the inherent imperfections in natural fibers, there may be a subtle variation in color tone and minor irregularities that are typical to linen and recycled materials

Take a moment to Re Charge. Our classic herringbone fabric, Re Charge, is a timeless choice for both traditional and modern decor styles. The high-quality blended fabric adds a touch of sophistication to any space and works perfectly for light upholstery projects including cushions, stools and more.

Re Charge is made for you by skilled hands in Europe.



01



02



03

CARE INSTRUCTIONS

- Professional dry-cleaning of the upholstery fabrics is advised. If you decide to wash the fabrics at home, please follow the instructions mentioned below.
- Before cleaning the upholstery fabrics, dust them. Either with the vacuum brush attachment on a low setting or shake them out.
- Cold wash the fabric at 30°C without spin or centrifuge cycle.
- Do not rub or wring fabric after washing.
- All fabrics can be ironed on low temperature and steam ironed.
- When in **doubt**, please don't hesitate to contact us, or take a look on our website, www.frankly.amsterdam/careinstructions, for more information.



Dry-cleaning is advised

WARRANTY

- Frankly Amsterdam **guarantees** its curtains for 2 years of normal use.
- All our products are made with care. In case a **manufacturing defect** escaped our attention, please inform us within 14 days after delivery and leave the product unused.
- Small differences or **irregularities** in color or size may occur. This is inherent to the use of these fibers, in particular linen, and has to be accepted when within normal commercial tolerances.
- Frankly Amsterdam will not accept any complaint if shading is concerned.

