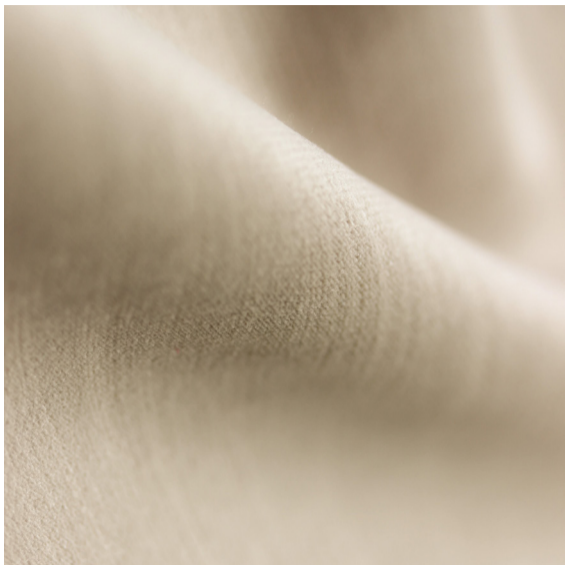




FRANKLY  
AMSTERDAM





## ROYAL COMFORT

Available as	Curtain & Upholstery
Width	140 cm
Weight	540 gr/m <sup>1</sup>
Direction	
Turnable	Yes
Type	Dim-out (when used as curtain)
Composition	100% PES
Colors	48 standard: 4601 to 4648
Care instructions	
Martindale	30.000
Pilling	3
Note	+ dry cleaning is advised + make sure that the nap of the velour fabric is oriented in the same direction when upholstering multiple products

Velour fabric Royal Comfort perfectly balances strength and durability with a soft, inviting texture. This robust and resilient fabric is ideal for dim-out curtains and upholstery. Royal Comfort is available in 48 rich colors, providing versatility without compromising on quality.

Custom-made in Europe with a width of 140 cm.



## CARE INSTRUCTIONS

- Do not **wash** this fabric. In case you do want to clean this fabric, professional **dry-cleaning** of this fabric is advised.
- Do not bleach this fabric.
- This fabric can be **ironed** on low temperature and steam ironed.
- In case of **stains**, deal with them promptly. Blot the affected area with a clean, damp cloth or sponge. Avoid rubbing the stain, as it can cause to spread or damage the fabric. Use a mild detergent diluted in water if necessary, but test it on a small, unnoticeable area first to ensure it doesn't cause discoloration.
- When in **doubt**, please don't hesitate to contact us, or take a look on our website, [www.frankly.amsterdam/careinstructions](http://www.frankly.amsterdam/careinstructions), for more information.



Dry-cleaning is advised

## WARRANTY

- Frankly Amsterdam **guarantees** its curtains for 2 years of normal use.
- All our products are made with care. In case a **manufacturing defect** escaped our attention, please inform us within 14 days after delivery and leave the product unused.
- Small differences or **irregularities** in color or size may occur. This is inherent to the use of these fibers, in particular linen, and has to be accepted when within normal commercial tolerances.
- Frankly Amsterdam will not accept any complaint if shading is concerned.

