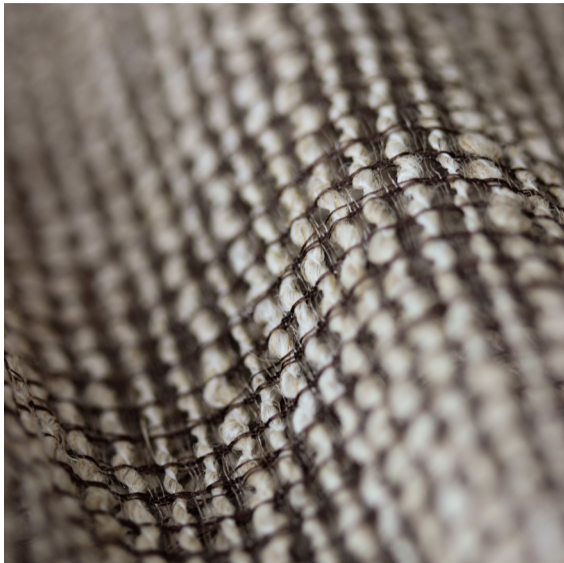








FRANKLY
AMSTERDAM





LIGHT BREEZE

Available as	Curtain
Width	300 cm
Direction	
Turnable	No
Type	In-between
Composition	46% Linen, 36% Viscose, 11% Polyester, 7% Polyamide
Colors	8 standard: 9201 to 9208

Care instructions     

Note

- + dry cleaning is advised
- + due to the inherent imperfections in natural fibers, there may be a subtle variation in color tone and minor irregularities that are typical to linen
- + this fabric is not suitable for roman blinds

Woven from two unique yarns, fabric Light Breeze offers a special textured look that is wonderfully soft to the touch. This lightweight fabric is handcrafted in Europe using a special viscose-linen blend.

Produced with a width of 300 cm, Light Breeze is available in 8 calming colors.



9201



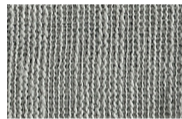
9202



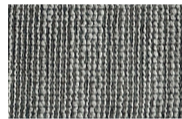
9203



9204



9205



9206



9207



9208

CARE INSTRUCTIONS

- Professional **dry-cleaning** of the curtain fabrics is advised. If you decide to wash the fabrics at home, please follow the instructions mentioned below.
- Before cleaning the curtains, dust them. Either with the vacuum brush attachment on a low setting or shake them out.
- Cold **wash** the curtains at 30°C without spin or centrifuge cycle.
- Do not rub or wring fabric after washing.
- Do not bleach this fabric.
- This fabric can be ironed on low temperature and steam ironed.
- When in **doubt**, please don't hesitate to contact us, or take a look on our website, www.frankly.amsterdam/careinstructions, for more information.



Dry-cleaning is advised

WARRANTY

- Frankly Amsterdam **guarantees** its curtains for 2 years of normal use.
- All our products are made with care. In case a **manufacturing defect** escaped our attention, please inform us within 14 days after delivery and leave the product unused.
- Small differences or **irregularities** in color or size may occur. This is inherent to the use of these fibers, in particular linen, and has to be accepted when within normal commercial tolerances.
- Frankly Amsterdam will not accept any complaint if shading is concerned.

