


FRANKLY
AMSTERDAM





FLAW LESS

Available as	Curtain
Width	295 cm
Direction	
Turnable	No
Type	In-between
Composition	100% Linen
Colors	36 standard: 1901 to 1936

Care instructions
Note



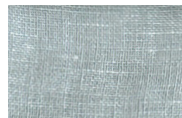
+ dry cleaning is advised
+ due to the inherent imperfections in natural fibers, there may be a subtle variation in color tone and minor irregularities that are typical to linen

The light, flowing nature of Flaw Less curtain fabrics adds a natural warmth to any room. Made in Europe and available in 36 hues, this 100% linen fabric brings a sense of airiness and calm.

Flaw Less is custom-made in Europe with a width of 295 cm, ensuring a perfect fit for your space.



1901



1902



1903



1904



1905



1906



1907



1908



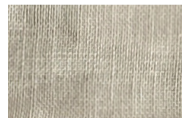
1909



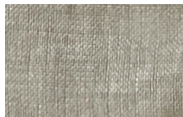
1910



1911



1912



1913



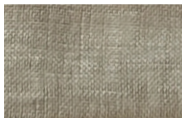
1914



1915



1916



1917



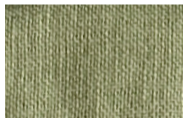
1918



1919



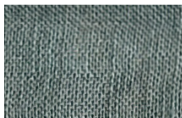
1920



1921



1922



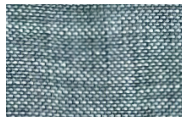
1923



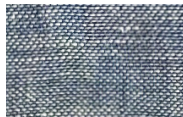
1924



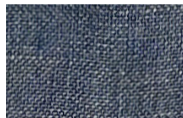
1925



1926



1927



1928



1929



1930



1931



1932



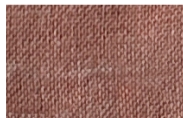
1933



1934



1935



1936

CARE INSTRUCTIONS

- Professional **dry-cleaning** of the curtain fabrics is advised. If you decide to wash the fabrics at home, please follow the instructions mentioned below.
- Before cleaning the curtains, dust them. Either with the vacuum brush attachment on a low setting or shake them out.
- Cold hand **wash** the curtains without spin or centrifuge cycle.
- Do not rub or wring fabric after washing.
- Do not bleach this fabric.
- This fabric can be ironed on low temperature and steam ironed.
- When in **doubt**, please don't hesitate to contact us, or take a look on our website, www.frankly.amsterdam/careinstructions, for more information.



Dry-cleaning is advised

WARRANTY

- Frankly Amsterdam **guarantees** its curtains for 2 years of normal use.
- All our products are made with care. In case a **manufacturing defect** escaped our attention, please inform us within 14 days after delivery and leave the product unused.
- Small differences or **irregularities** in color or size may occur. This is inherent to the use of these fibers, in particular linen, and has to be accepted when within normal commercial tolerances.
- Frankly Amsterdam will not accept any complaint if shading is concerned.

