

FRANKLY
AMSTERDAM





DAY BREAK

Available as
Width
Direction

Curtain
300 cm



Turnable
Type
Composition
Colors

No
Curtain
100% Linen
25 standard:
2201 to 2225

Care instructions
Note



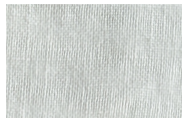
+ dry cleaning is advised
+ due to the inherent imperfections in natural fibers, there may be a subtle variation in color tone and minor irregularities that are typical to linen

Crafted from heavyweight linen, Day Break brings both style and substance to any room. This luxurious, 100% natural fabric is available in 25 colors, ensuring there is always a perfect match.

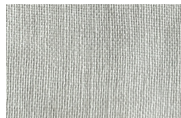
Day Break is made in Europe with a width of 300 cm.



2201



2202



2203



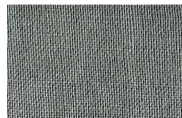
2204



2205



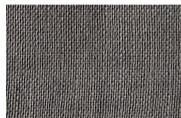
2206



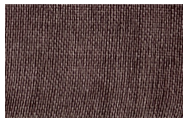
2207



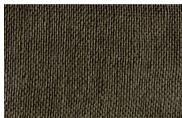
2208



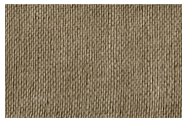
2209



2210



2212



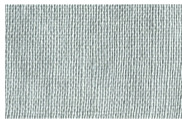
2213



2214



2215



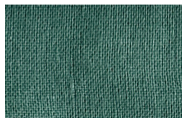
2216



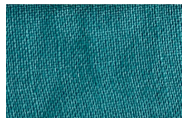
2217



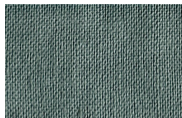
2218



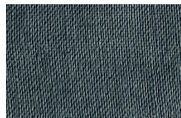
2219



2220



2221



2222



2223



2224



2225

CARE INSTRUCTIONS

- Professional **dry-cleaning** of the curtain fabrics is advised. If you decide to wash the fabrics at home, please follow the instructions mentioned below.
- Before cleaning the curtains, dust them. Either with the vacuum brush attachment on a low setting or shake them out.
- Cold **wash** the curtains at 30°C without spin or centrifuge cycle.
- Do not rub or wring fabric after washing.
- Do not bleach this fabric.
- This fabric can be ironed on low temperature and steam ironed.
- When in **doubt**, please don't hesitate to contact us, or take a look on our website, www.frankly.amsterdam/careinstructions, for more information.



Dry-cleaning is advised

WARRANTY

- Frankly Amsterdam **guarantees** its curtains for 2 years of normal use.
- All our products are made with care. In case a **manufacturing defect** escaped our attention, please inform us within 14 days after delivery and leave the product unused.
- Small differences or **irregularities** in color or size may occur. This is inherent to the use of these fibers, in particular linen, and has to be accepted when within normal commercial tolerances.
- Frankly Amsterdam will not accept any complaint if shading is concerned.

