

FRANKLY
AMSTERDAM

CONTRACT COLLECTION 2024



INDEX

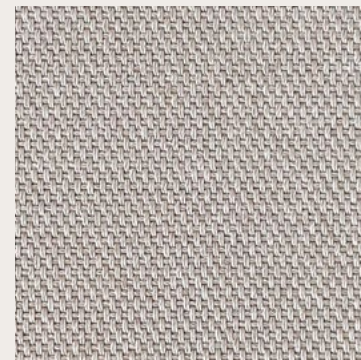
This is an interactive file
by clicking on a product image you will go directly to the right page in this file
by clicking on our logo you will go back to this index



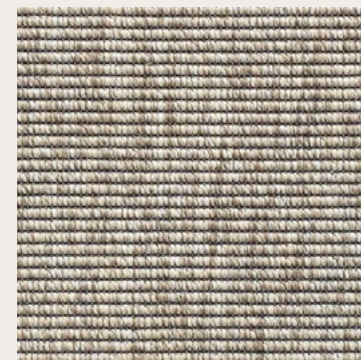
ALL STAR



DONE DEAL



EASY GOING



FRONT ROW



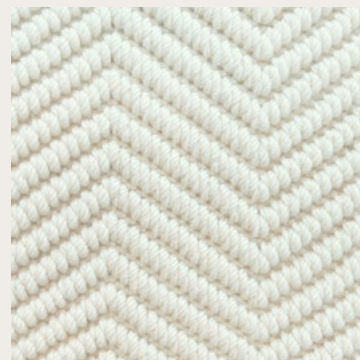
GOOD LIFE



HIGH TIDE



LAY OUT



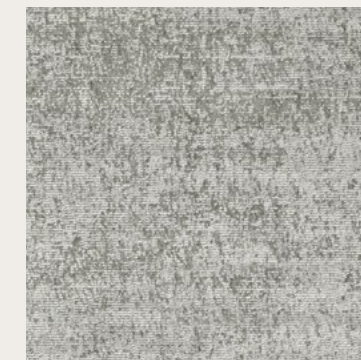
LINE UP



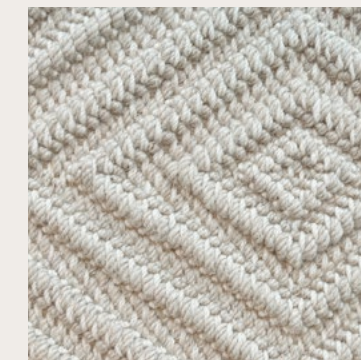
NEXT STEP



NO DOUBT



ON RETURN



OUT LINE



ROLL OVER



STEP UP 9



STEP UP 16



EDGE FINISHING OPTIONS



MAXMUM RUG SIZES

FRANKLY
AMSTERDAM

CONTRACT COLLECTION - ALL STAR



COLORS



ABOUT ALL STAR

Manufacturing method	Flatwoven
Pile surface	Loop pile
Pile composition	100% P.P.
Carpet thickness	± 5 mm
Fire classification	Cfl-s1 / Efl for color 8801 & 8808
Colors	11 standard colors
Use	Indoor and outdoor

All Star beautifully balances style and practicality into its weave. This flat woven carpet allows you to move around the space without any worries. Its water and UV-resistance makes it perfect for both indoor and outdoor applications, and it's suitable for residential and commercial installations.

Due to the different production dyelots, slight variation in color tone may occur. A small deviation from the sample swatches are not considered flaws.

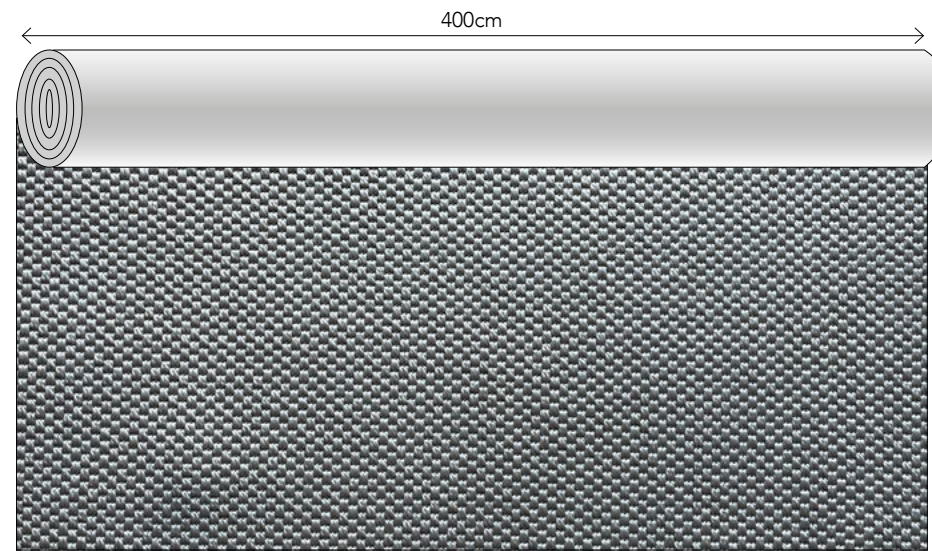
Rugs with a folded padded edge will have felted padding at the bottom, therefore they can only be used indoors and can not be used for stair runners. Please calculate a 10 cm margin around all edges for a rug with folded padded edge. Maximum rug width for this finish is 380 cm.

TECHNICAL INFORMATION

ALL STAR

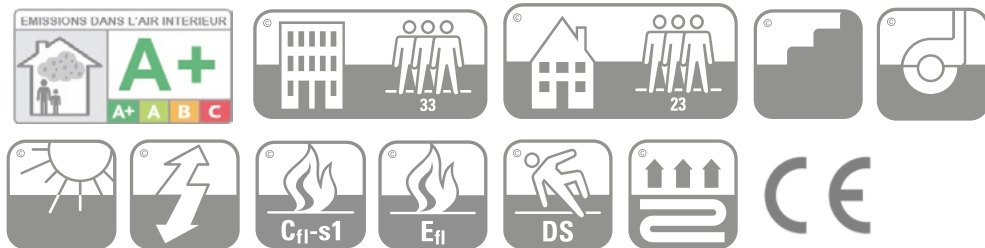
Manufacturing method	Flatwoven
Pile surface	Loop pile
Pile composition	100% P.P.
Carpet weight	± 1.650 g/m ²
Carpet thickness	± 5 mm
Backing	Gel backing Color 8801, 8802 and 8808 have a Precoat Latex backing
Roll width	4 meters
Fire classification	Cfl-s1 / Efl for color 8801, 8802 & 8808
Colors	11 standard
Advantages	+ suitable for indoor and outdoor use + suitable for residential and contract + available as rug, wall-to-wall carpet and stair runner + waterproof and UV proof + easy cleaning, even with bleach + castor proof

PATTERN DIRECTION



This pattern is not on scale, this image only shows the pattern direction

Please note that your order will be cut from a roll of 4 meters width.
Please include the cutting loss in your order. If you need any help
calculating this, we are glad to be of service.



Classification EN 1307 and EN 13501-1:2018

PLEASE CONSULT OUR INSTALLATION GUIDE CONTAINING IMPORTANT INFORMATION RELATIVE TO THE PLANNING & INSTALLATION OF THIS PRODUCT.

INSTALLATION GUIDE

PLANNING & INSTALLATION ALL STAR

You are considering the purchase of a beautiful high-quality carpet, but don't forget it needs a skilled installer to ensure its beauty is lasting. The best carpet installers are highly skilled, have great knowledge, will give excellent advice and take pride in their work. Always ensure your installer works to the national code of practice for carpet installation and selects the best materials and method of carpet laying for the individual project. We believe a site visit from your installer is an essential part of the process and that they should have seen samples of the materials you intend to install.

The following information is provided in good faith and no responsibility is accepted by Frankly Amsterdam for claims arising from any proposed installation methods.

NOTES

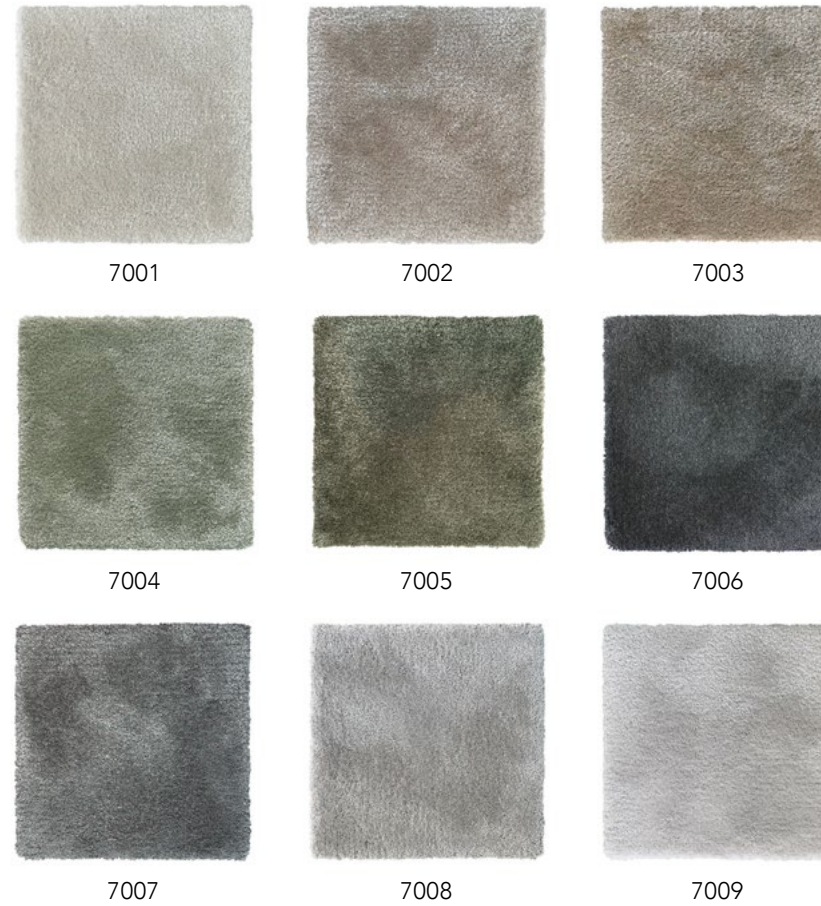
- Make sure to only fit rolls from the same batch next to each other, to avoid differences in appearance. Please consult with Frankly Amsterdam in advance about roll numbers related to different batches.
- The carpet lengths should always be fitted in the same direction within one room. We recommend fitting the carpet in all rooms or levels in one direction only, due to the clearly visible texture of flat woven carpet.
- In woven structures, where in machine direction the straight warp yarn cannot be noticed, cutting must be made exact along the pile-warp surface yarn. Never cut through the straight warp binding yarn, as this will give high risk of fraying.
- Do not cut the carpet from the back or double cut the carpet.
- Head seams can be finished with a metal binding strip. For example; head seams can be used with doorways, when carpet goes from hall areas into connecting rooms. Ensure that the seam is directly underneath the door leaf. The head seam must be covered with a metal binding strip.
- Where edges are cut to create a seam, the cut edges must be sealed using a proprietary seam sealant. The sealant must be allowed sufficient time to dry before forming the seam.
- Rubber underlayment is recommended for all wall-to-wall installations and area rugs.

FRANKLY
AMSTERDAM

CONTRACT COLLECTION - DONE DEAL



COLORS



ABOUT DONE DEAL

Manufacturing method	Hand tufted
Pile surface	Cut Pile
Pile composition	50% Wool, 50% Eucalyptus
Pile height	± 12 mm
Carpet thickness	± 13,5 mm
Fire classification	Cfl-s1
Colors	9 standard colors, custom colors available on request

This sophisticated cut pile carpet has the best of both worlds: the strength of wool combined with the luxurious shine of eucalyptus yarn. Done Deal can be ordered from 24 m² or more and is suitable for residential and soft contract use. The 9 standard colors include delicate neutrals to strong dark hues. Custom colours can be ordered on request from 24 m².

Due to the characteristics of the natural materials used in this carpet, slight variation in color tone may occur. A small deviation from the sample swatches are not considered flaws.

TECHNICAL INFORMATION

DONE DEAL

Manufacturing method	Hand tufted
Pile surface	Cut Pile
Pile composition	50% Wool + 50% Eucalyptus
Carpet weight	± 3.500 g/m ²
Pile height	± 12 mm
Carpet thickness	± 13,5 mm
Backing	Natural latex + anti-slip
Fire classification	Cfl-s1
Colors	9 standard colors, custom colors available on request
Advantages	+ suitable for residential as well as softcontract + available as stair runner + long-lasting + custom colors available

FRANKLY
AMSTERDAM

CONTRACT COLLECTION - EASY GOING



COLORS



ABOUT EASY GOING

Manufacturing method	Flatwoven
Pile surface	Loop pile
Pile composition	100% Recycled PET
Carpet thickness	± 4 mm
Fire classification	Dfl-s1
Colors	6 standard colors
Use	Indoor and outdoor

This flat woven beauty is the perfect example of form meets function. Made from recycled plastic bottles, Easy Going is your environmentally friendly solution for indoor as well as outdoor living. Thanks to its strong and long-lasting yarn, it is very easy to clean with fibers that are water resistant and meet the UV resistance requirements. Above all these amazing aspects, Easy Going is soft to the touch, providing a similar visual effect of traditional natural flatwovens without the disadvantages of it.

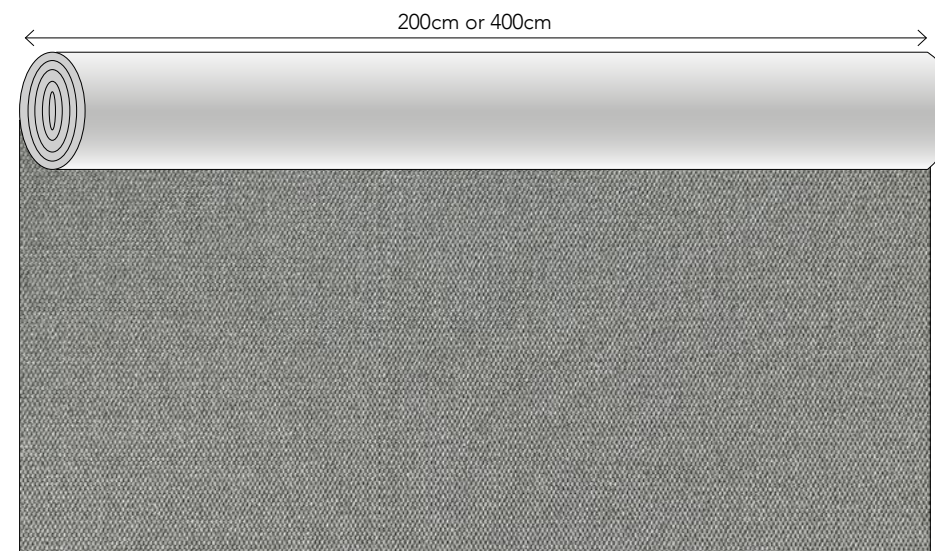
Due to the different production dyelots, slight variation in color tone may occur. A small deviation from the sample swatches are not considered flaws.

TECHNICAL INFORMATION

EASY GOING

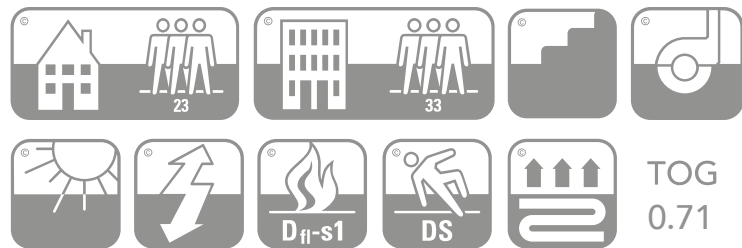
Manufacturing method	Flatwoven
Pile surface	Loop pile
Pile composition	100% Recycled PET
Carpet weight	± 2.400 g/m ²
Carpet thickness	± 4 mm
Backing	P.P. + Latex
Roll width	2 or 4 meters
Fire classification	Dfl-s1
Colors	6 standard
Advantages	+ suitable for indoor and outdoor use + suitable for residential and contract + available as rug, wall-to-wall carpet and stair runner + waterproof and UV proof + easy cleaning, even with bleach + castor proof

PATTERN DIRECTION



This pattern is not on scale, this image only shows the pattern direction

Please note that your order will be cut from a roll of 2 meters or 4 meters width. Please include the cutting loss in your order. If you need any help calculating this, we are glad to be of service.



Classification EN 1307 and EN 14041

PLEASE CONSULT OUR INSTALLATION GUIDE CONTAINING IMPORTANT INFORMATION RELATIVE TO THE PLANNING & INSTALLATION OF THIS PRODUCT.

INSTALLATION GUIDE

PLANNING & INSTALLATION EASY GOING

You are considering the purchase of a beautiful high-quality carpet, but don't forget it needs a skilled installer to ensure its beauty is lasting. The best carpet installers are highly skilled, have great knowledge, will give excellent advice and take pride in their work. Always ensure your installer works to the national code of practice for carpet installation and selects the best materials and method of carpet laying for the individual project. We believe a site visit from your installer is an essential part of the process and that they should have seen samples of the materials you intend to install.

The following information is provided in good faith and no responsibility is accepted by Frankly Amsterdam for claims arising from any proposed installation methods.

PHASE	OPERATION/DESCRIPTION	DOUBLE-STICK FITTING METHOD (Note 2)
1) Project Planning	1.1 Seaming/joining (Note 1) 1.2 Multi width seaming (Note 3)	Side-to-side only No manufacturers selvedge
2) On site Preparation	2.1 Perimeter Gripper Type (Note 4) 2.2 Gripper Banking 2.3 Gripper Position (From Perimeter of room)	Short Pin Length Single (Note 5) 3mm
3) Carpet Preparation	3.1 Carpet/Seam Cutting (Note 6) 3.2 Seam Sealing (cut edges) (Note 7) 3.3 Seaming Method (Note 8)	Back Cut Seam edges must be sealed N/A

Rubber underlayment is recommended for all wall-to-wall installations and area rugs.

NOTES

- NOTE 1: The cutting and seaming together of a flatweave is a precise and time consuming process with the resulting join likely to be variable in appearance. The durability of seams cannot be guaranteed in multi-width installations. We do not recommend either side to side or end to end joins in this flatweave product.
- NOTE 2: It is not recommended for this carpet to be stretch fitted. Carpet should be fully bonded to prepared sub floors, or installed using the Double-Stick method.
- NOTE 3: This carpet is manufactured with an open selvedge that must be trimmed back for seaming. When executing the seam, attention must be paid to the pattern and weave structure on the edges of the carpet body, to ensure a consistent seam is achieved. Upon receipt of the carpet we recommend close inspection of both edges, as it will be necessary to cut back into the body of the carpet.
- NOTE 4: This carpet should only be fitted on short pin length Blank Gripper.
- NOTE 5: Double stick installations will require the use of Blank Gripper which should be positioned 3 mm from the perimeter walls or skirting.
- NOTE 6: This carpet can only be cut from the back. Using a sharp knife, cut cleanly along the line of the warpwise row. Care must be taken to cut a straight line within the individual row and not to differ to the rows on either side of the cut line.
- NOTE 7: Where edges are cut to create a seam, the cut edges must be sealed using a proprietary seam sealant. The sealant must be allowed sufficient time to dry before forming the seam.
- NOTE 8: We recommend the use of a quality seaming tape. Where possible the use of an electrically activated seaming tape (Silvaseam) is recommended as this allows greater control in the formation of the seam.

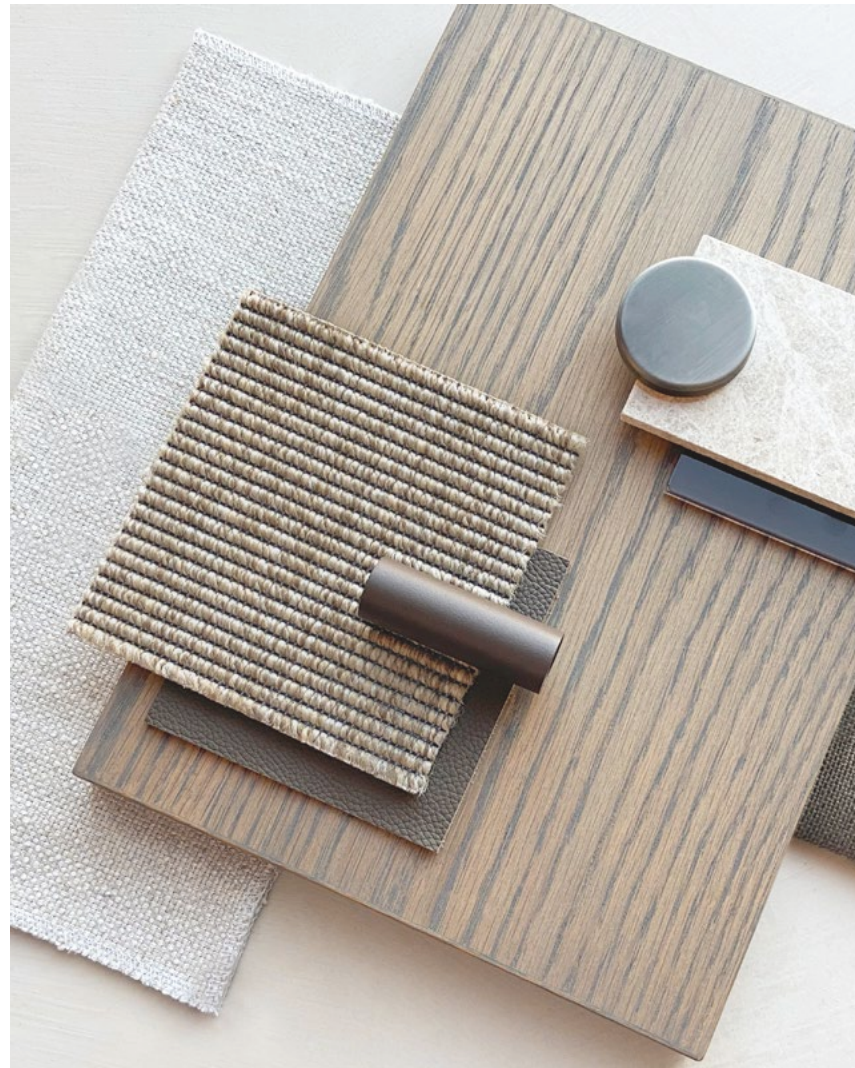
ALL INSTALLATION MUST BE CARRIED OUT IN ACCORDANCE WITH BS5325:2001 THE INSTALLATION OF TEXTILE FLOOR COVERINGS - CODE OF PRACTICE

FRANKLY
AMSTERDAM

CONTRACT COLLECTION - FRONT ROW



COLORS



ABOUT FRONT ROW

Manufacturing method	Flatwoven
Pile surface	Loop pile
Pile composition	100% P.P.
Carpet thickness	± 4 mm
Fire classification	Cfl-s1
Colors	8 standard colors
Use	Indoor and outdoor

A flat woven carpet that expresses itself through its timeless pattern. Front Row is delicate to the eye, yet hardwearing and sturdy to any floor it's laid upon. The differently colored blend of fibers gives Front Row its traditional and natural look, without any of the disadvantages of natural fibers. Front Row is tested to guarantee maximum resistance to light and weather conditions, and complies with the highest level of contract quality tests. Suitable for indoor and outdoor use, both residential and commercial installations.

Due to the different production dyelots, slight variation in color tone may occur. A small deviation from the sample swatches are not considered flaws.

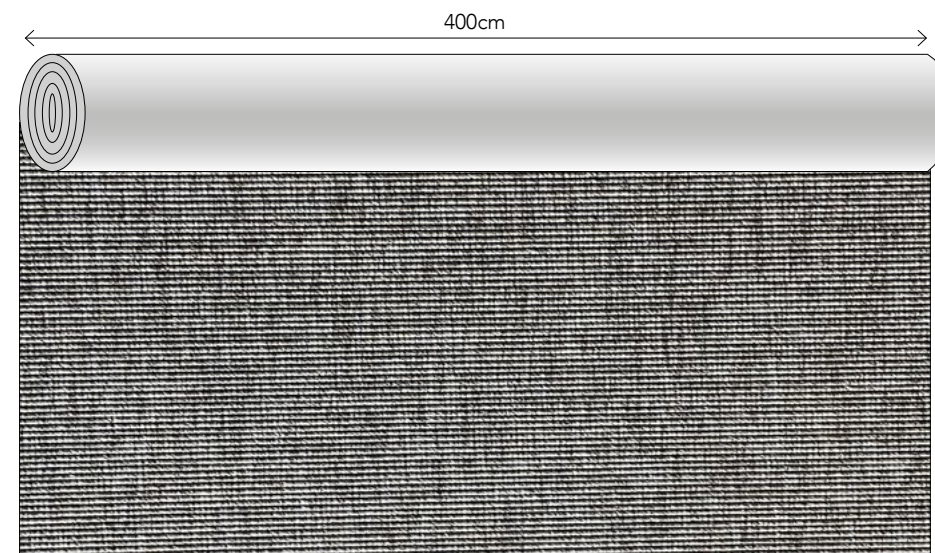
Rugs with a folded padded edge will have felted padding at the bottom, therefore they can only be used indoors and can not be used for stair runners. Please calculate a 10 cm margin around all edges for a rug with folded padded edge. Maximum rug width for this finish is 380 cm.

TECHNICAL INFORMATION

FRONT ROW

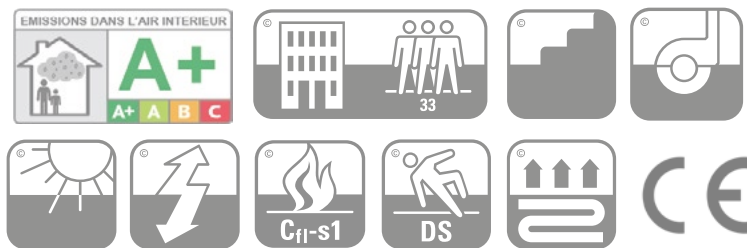
Manufacturing method	Flatwoven
Pile surface	Loop pile
Pile composition	100% P.P. ± 1.650 g/m ²
Carpet weight	± 4 mm
Carpet thickness	Gel backing
Backing	4 meters
Roll width	Cfl-s1
Fire classification	8 standard
Colors	+ suitable for indoor and outdoor use
Advantages	+ suitable for residential and contract + available as rug, wall-to-wall carpet and stair runner + waterproof and UV proof + easy cleaning, even with bleach + castor proof

PATTERN DIRECTION



This pattern is not on scale, this image only shows the pattern direction

Please note that your order will be cut from a roll of 4 meters width.
Please include the cutting loss in your order. If you need any help
calculating this, we are glad to be of service.



Classification EN 1307 and EN 13501-1:2018

PLEASE CONSULT OUR INSTALLATION GUIDE CONTAINING IMPORTANT INFORMATION RELATIVE TO THE PLANNING & INSTALLATION OF THIS PRODUCT.

INSTALLATION GUIDE

PLANNING & INSTALLATION FRONT ROW

You are considering the purchase of a beautiful high-quality carpet, but don't forget it needs a skilled installer to ensure its beauty is lasting. The best carpet installers are highly skilled, have great knowledge, will give excellent advice and take pride in their work. Always ensure your installer works to the national code of practice for carpet installation and selects the best materials and method of carpet laying for the individual project. We believe a site visit from your installer is an essential part of the process and that they should have seen samples of the materials you intend to install.

The following information is provided in good faith and no responsibility is accepted by Frankly Amsterdam for claims arising from any proposed installation methods.

NOTES

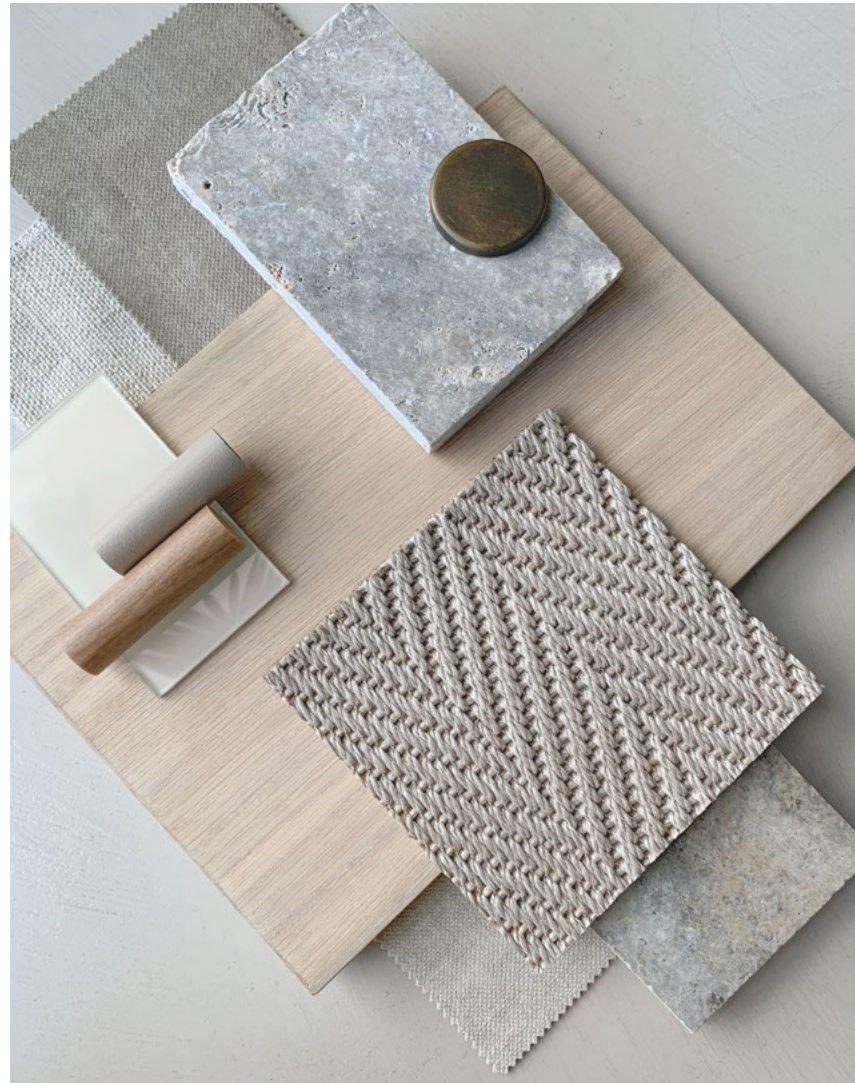
- Make sure to only fit rolls from the same batch next to each other, to avoid differences in appearance. Please consult with Frankly Amsterdam in advance about roll numbers related to different batches.
- The carpet lengths should always be fitted in the same direction within one room. We recommend fitting the carpet in all rooms or levels in one direction only, due to the clearly visible texture of flat woven carpet.
- In woven structures, where in machine direction the straight warp yarn cannot be noticed, cutting must be made exact along the pile-warp surface yarn. Never cut through the straight warp binding yarn, as this will give high risk of fraying.
- Do not cut the carpet from the back or double cut the carpet.
- Head seams can be finished with a metal binding strip. For example; head seams can be used with doorways, when carpet goes from hall areas into connecting rooms. Ensure that the seam is directly underneath the door leaf. The head seam must be covered with a metal binding strip.
- Where edges are cut to create a seam, the cut edges must be sealed using a proprietary seam sealant. The sealant must be allowed sufficient time to dry before forming the seam.
- Rubber underlayment is recommended for all wall-to-wall installations and area rugs.

FRANKLY
AMSTERDAM

CONTRACT COLLECTION - GOOD LIFE



COLORS



7301



7302



7303



7304

ABOUT GOOD LIFE

Manufacturing method	Flatwoven
Pile surface	Loop pile
Pile composition	100% Recycled PET
Carpet thickness	± 4 mm
Fire classification	Dfl-s1
Colors	4 standard colors
Use	Indoor and outdoor

This flat woven beauty is the perfect example of form meets function. Made from recycled plastic bottles, Good Life is your environmentally friendly solution for indoor as well as outdoor living. Thanks to its strong and long-lasting yarn, it is very easy to clean with fibers that are water resistant and meet the UV resistance requirements. Above all these amazing aspects, Good Life is soft to the touch, providing a similar visual effect of traditional natural flatwovens without the disadvantages of it.

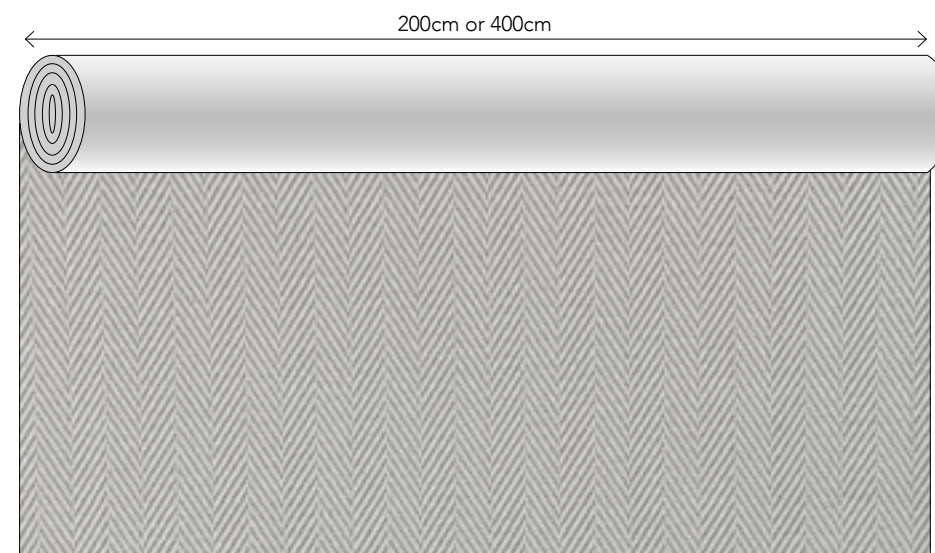
Due to the different production dyelots, slight variation in color tone may occur. A small deviation from the sample swatches are not considered flaws.

TECHNICAL INFORMATION

GOOD LIFE

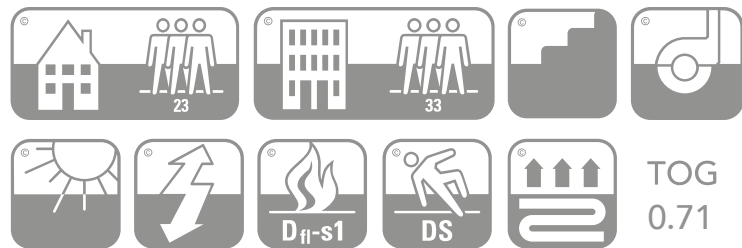
Manufacturing method	Flatwoven
Pile surface	Loop pile
Pile composition	100% Recycled PET
Carpet weight	± 2.300 g/m ²
Carpet thickness	± 4 mm
Backing	P.P. + Latex
Roll width	2 or 4 meters
Fire classification	Dfl-s1
Colors	4 standard
Advantages	+ suitable for indoor and outdoor use + suitable for residential and contract + available as rug, wall-to-wall carpet and stair runner + waterproof and UV proof + easy cleaning, even with bleach + castor proof

PATTERN DIRECTION



This pattern is not on scale, this image only shows the pattern direction

Please note that your order will be cut from a roll of 2 meters or 4 meters width. Please include the cutting loss in your order. If you need any help calculating this, we are glad to be of service.



Classification EN 1307 and EN 14041

PLEASE CONSULT OUR INSTALLATION GUIDE CONTAINING IMPORTANT INFORMATION RELATIVE TO THE PLANNING & INSTALLATION OF THIS PRODUCT.

INSTALLATION GUIDE

PLANNING & INSTALLATION GOOD LIFE

You are considering the purchase of a beautiful high-quality carpet, but don't forget it needs a skilled installer to ensure its beauty is lasting. The best carpet installers are highly skilled, have great knowledge, will give excellent advice and take pride in their work. Always ensure your installer works to the national code of practice for carpet installation and selects the best materials and method of carpet laying for the individual project. We believe a site visit from your installer is an essential part of the process and that they should have seen samples of the materials you intend to install.

The following information is provided in good faith and no responsibility is accepted by Frankly Amsterdam for claims arising from any proposed installation methods.

PHASE	OPERATION/DESCRIPTION	DOUBLE-STICK FITTING METHOD (Note 2)
1) Project Planning	1.1) Seaming/joining (Note 1) 1.2) Multi width seaming (Note 3)	Side-to-side only No manufacturers selvedge
2) On site Preparation	2.1) Perimeter Gripper Type (Note 4) 2.2) Gripper Banking 2.3) Gripper Position (From Perimeter of room)	Short Pin Length Single (Note 5) 3mm
3) Carpet Preparation	3.1) Carpet/Seam Cutting (Note 6) 3.2) Seam Sealing (cut edges) (Note 7) 3.3) Seaming Method (Note 8)	Back Cut Seam edges must be sealed N/A

Rubber underlayment is recommended for all wall-to-wall installations and area rugs.

NOTES

- NOTE 1: The cutting and seaming together of a flatweave is a precise and time consuming process with the resulting join likely to be variable in appearance. The durability of seams cannot be guaranteed in multi-width installations. We do not recommend either side to side or end to end joins in this flatweave product.
- NOTE 2: It is not recommended for this carpet to be stretch fitted. Carpet should be fully bonded to prepared sub floors, or installed using the Double-Stick method.
- NOTE 3: This carpet is manufactured with an open selvedge that must be trimmed back for seaming. When executing the seam, attention must be paid to the pattern and weave structure on the edges of the carpet body, to ensure a consistent seam is achieved. Upon receipt of the carpet we recommend close inspection of both edges, as it will be necessary to cut back into the body of the carpet.
- NOTE 4: This carpet should only be fitted on short pin length Blank Gripper.
- NOTE 5: Double stick installations will require the use of Blank Gripper which should be positioned 3 mm from the perimeter walls or skirting.
- NOTE 6: This carpet can only be cut from the back. Using a sharp knife, cut cleanly along the line of the warpwise row. Care must be taken to cut a straight line within the individual row and not to differ to the rows on either side of the cut line.
- NOTE 7: Where edges are cut to create a seam, the cut edges must be sealed using a proprietary seam sealant. The sealant must be allowed sufficient time to dry before forming the seam.
- NOTE 8: We recommend the use of a quality seaming tape. Where possible the use of an electrically activated seaming tape (Silvaseam) is recommended as this allows greater control in the formation of the seam.

ALL INSTALLATION MUST BE CARRIED OUT IN ACCORDANCE WITH BS5325:2001 THE INSTALLATION OF TEXTILE FLOOR COVERINGS - CODE OF PRACTICE

FRANKLY
AMSTERDAM

CONTRACT COLLECTION - HIGH TIDE



COLORS



7101



7102



7103



7104

ABOUT HIGH TIDE

Manufacturing method	Flatwoven
Pile surface	Loop pile
Pile composition	100% Recycled PET
Carpet thickness	± 4 mm
Fire classification	Dfl-s1
Colors	4 standard colors
Use	Indoor and outdoor

This flat woven beauty is the perfect example of form meets function. Made from recycled plastic bottles, High Tide is your environmentally friendly solution for indoor as well as outdoor living. Thanks to its strong and long-lasting yarn, it is very easy to clean with fibers that are water resistant and meet the UV resistance requirements. Above all these amazing aspects, High Tide is soft to the touch, providing a similar visual effect of traditional natural flatwovens without the disadvantages of it.

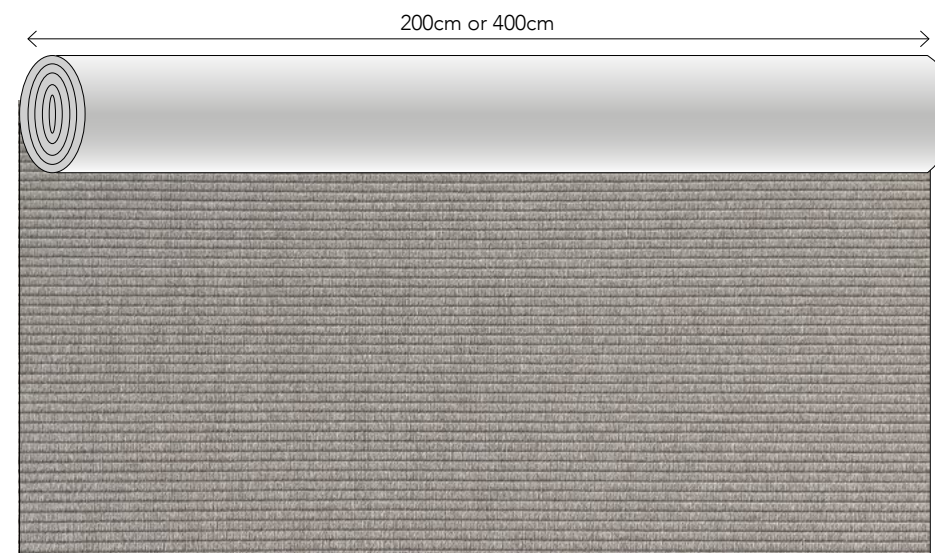
Due to the different production dyelots, slight variation in color tone may occur. A small deviation from the sample swatches are not considered flaws.

TECHNICAL INFORMATION

HIGH TIDE

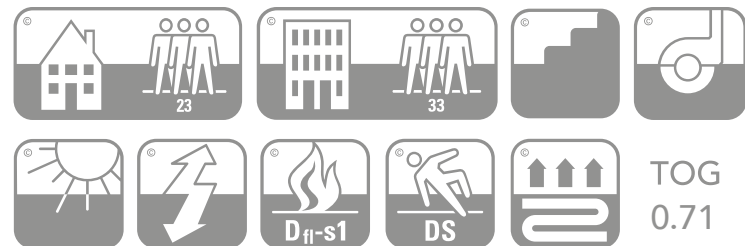
Manufacturing method	Flatwoven
Pile surface	Loop pile
Pile composition	100% Recycled PET
Carpet weight	± 2.600 g/m ²
Carpet thickness	± 4 mm
Backing	P.P. + Latex
Roll width	2 or 4 meters
Fire classification	Dfl-s1
Colors	4 standard
Advantages	<ul style="list-style-type: none"> + suitable for indoor and outdoor use + suitable for residential and contract + available as rug, wall-to-wall carpet and stair runner + waterproof and UV proof + easy cleaning, even with bleach + castor proof

PATTERN DIRECTION



This pattern is not on scale, this image only shows the pattern direction

Please note that your order will be cut from a roll of 2 meters or 4 meters width. Please include the cutting loss in your order. If you need any help calculating this, we are glad to be of service.



Classification EN 1307 and EN 14041

PLEASE CONSULT OUR INSTALLATION GUIDE CONTAINING IMPORTANT INFORMATION RELATIVE TO THE PLANNING & INSTALLATION OF THIS PRODUCT.

INSTALLATION GUIDE

PLANNING & INSTALLATION HIGH TIDE

You are considering the purchase of a beautiful high-quality carpet, but don't forget it needs a skilled installer to ensure its beauty is lasting. The best carpet installers are highly skilled, have great knowledge, will give excellent advice and take pride in their work. Always ensure your installer works to the national code of practice for carpet installation and selects the best materials and method of carpet laying for the individual project. We believe a site visit from your installer is an essential part of the process and that they should have seen samples of the materials you intend to install.

The following information is provided in good faith and no responsibility is accepted by Frankly Amsterdam for claims arising from any proposed installation methods.

PHASE	OPERATION/DESCRIPTION	DOUBLE-STICK FITTING METHOD (Note 2)
1) Project Planning	1.1) Seaming/joining (Note 1) 1.2) Multi width seaming (Note 3)	Side-to-side only No manufacturers selvedge
2) On site Preparation	2.1) Perimeter Gripper Type (Note 4) 2.2) Gripper Banking 2.3) Gripper Position (From Perimeter of room)	Short Pin Length Single (Note 5) 3mm
3) Carpet Preparation	3.1) Carpet/Seam Cutting (Note 6) 3.2) Seam Sealing (cut edges) (Note 7) 3.3) Seaming Method (Note 8)	Back Cut Seam edges must be sealed N/A

Rubber underlayment is recommended for all wall-to-wall installations and area rugs.

NOTES

- NOTE 1: The cutting and seaming together of a flatweave is a precise and time consuming process with the resulting join likely to be variable in appearance. The durability of seams cannot be guaranteed in multi-width installations. We do not recommend either side to side or end to end joins in this flatweave product.
- NOTE 2: It is not recommended for this carpet to be stretch fitted. Carpet should be fully bonded to prepared sub floors, or installed using the Double-Stick method.
- NOTE 3: This carpet is manufactured with an open selvedge that must be trimmed back for seaming. When executing the seam, attention must be paid to the pattern and weave structure on the edges of the carpet body, to ensure a consistent seam is achieved. Upon receipt of the carpet we recommend close inspection of both edges, as it will be necessary to cut back into the body of the carpet.
- NOTE 4: This carpet should only be fitted on short pin length Blank Gripper.
- NOTE 5: Double stick installations will require the use of Blank Gripper which should be positioned 3 mm from the perimeter walls or skirting.
- NOTE 6: This carpet can only be cut from the back. Using a sharp knife, cut cleanly along the line of the warpwise row. Care must be taken to cut a straight line within the individual row and not to differ to the rows on either side of the cut line.
- NOTE 7: Where edges are cut to create a seam, the cut edges must be sealed using a proprietary seam sealant. The sealant must be allowed sufficient time to dry before forming the seam.
- NOTE 8: We recommend the use of a quality seaming tape. Where possible the use of an electrically activated seaming tape (Silvaseam) is recommended as this allows greater control in the formation of the seam.

ALL INSTALLATION MUST BE CARRIED OUT IN ACCORDANCE WITH BS5325:2001 THE INSTALLATION OF TEXTILE FLOOR COVERINGS - CODE OF PRACTICE

FRANKLY
AMSTERDAM

CONTRACT COLLECTION - LAY OUT



COLORS



1601



1602



1603



1604

ABOUT LAY OUT

Manufacturing method	Wilton weave
Pile surface	Loop pile
Pile composition	100% Wool
Carpet thickness	± 7 mm
Fire classification	Bfl-s1
Colors	4 standard colors
Use	Indoor

Designed to elevate any space, the Lay Out rug effortlessly commands attention and adds interest to any room, merging contemporary style with practical functionality for both residential and soft contract settings.

Made in Europe, Lay Out showcases a unique geometric pattern, woven using the Wilton technique. Constructed from 100% wool, this rug offers durability, hypoallergenic properties, and temperature moderation.

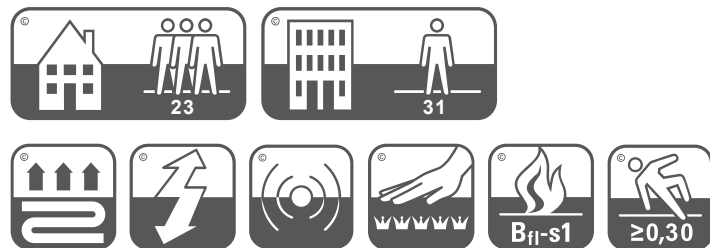
The artisan-made design showcases a perfect blend of softness and resilience, suitable as a custom-sized rug or runner. Available in four standard colors, to compliment any design scheme.

TECHNICAL INFORMATION

LAY OUT

Manufacturing method	Wilton weave
Pile surface	Loop pile
Pile composition	100% Wool
Carpet weight	± 2.700 g/m ²
Carpet thickness	± 7 mm
Backing	Jute & cotton
Roll width	4 meters
Fire classification	Bfl-s1
Colors	4 standard colors
Advantages	+ available as rug and runner + suitable for heavy domestic use and soft contract + durable and hypoallergenic properties + natural backing with jute and cotton + custom shape possible
Note	Anti-slip underlayment is advised

Please note that your order will be cut from a roll of 4 meters width.
Please include the cutting loss in your order. If you need any help calculating this, we are glad to be of service.



Classification EN 1307 and EN 13501

PATTERN DIRECTION



This pattern is not on scale, this image only shows the pattern direction

FRANKLY
AMSTERDAM

CONTRACT COLLECTION - LINE UP



COLORS



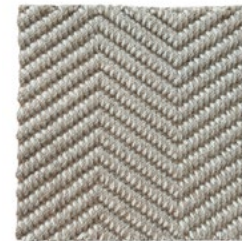
1701



1702



1703



1704

ABOUT LINE UP

Manufacturing method	Wilton weave
Pile surface	Loop pile
Pile composition	100% Wool
Carpet thickness	± 7 mm
Fire classification	Bfl-s1
Colors	4 standard colors
Use	Indoor

Line Up draws inspiration from the beauty of symmetry found in every day life. This design merges contemporary style with practical functionality for both residential and soft contract use.

Made in Europe, Line Up showcases a unique geometric pattern, woven using the Wilton technique. Constructed from 100% wool, this rug offers durability, hypoallergenic properties, and temperature moderation.

The artisan-made design showcases a perfect blend of softness and resilience, suitable as a custom-sized rug or runner. Available in four standard colors, to compliment any design scheme.

TECHNICAL INFORMATION

LINE UP

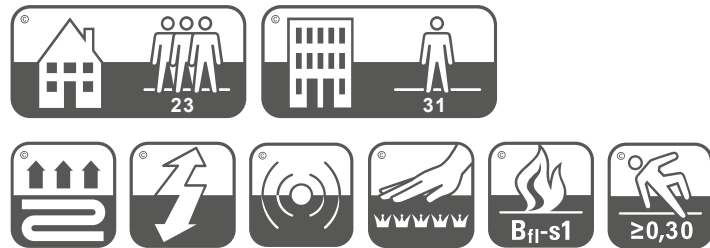
Manufacturing method	Wilton weave
Pile surface	Loop pile
Pile composition	100% Wool
Carpet weight	± 2.700 g/m ²
Carpet thickness	± 7 mm
Backing	Jute & cotton
Roll width	4 meters
Fire classification	Bfl-s1
Colors	4 standard colors
Advantages	+ available as rug and runner + suitable for heavy domestic use and soft contract + durable and hypoallergenic properties + natural backing with jute and cotton + custom shape possible
Note	Anti-slip underlayment is advised

PATTERN DIRECTION



This pattern is not on scale, this image only shows the pattern direction

Please note that your order will be cut from a roll of 4 meters width.
Please include the cutting loss in your order. If you need any help calculating this, we are glad to be of service.



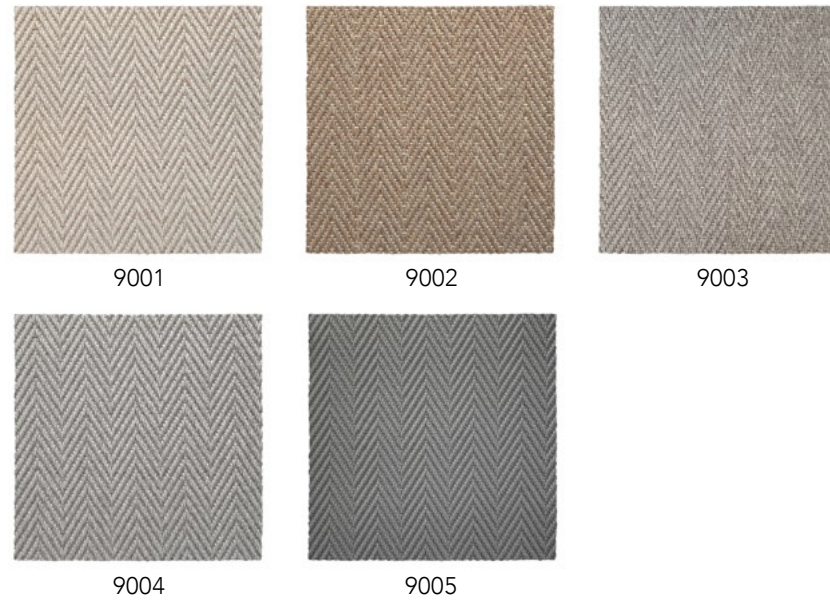
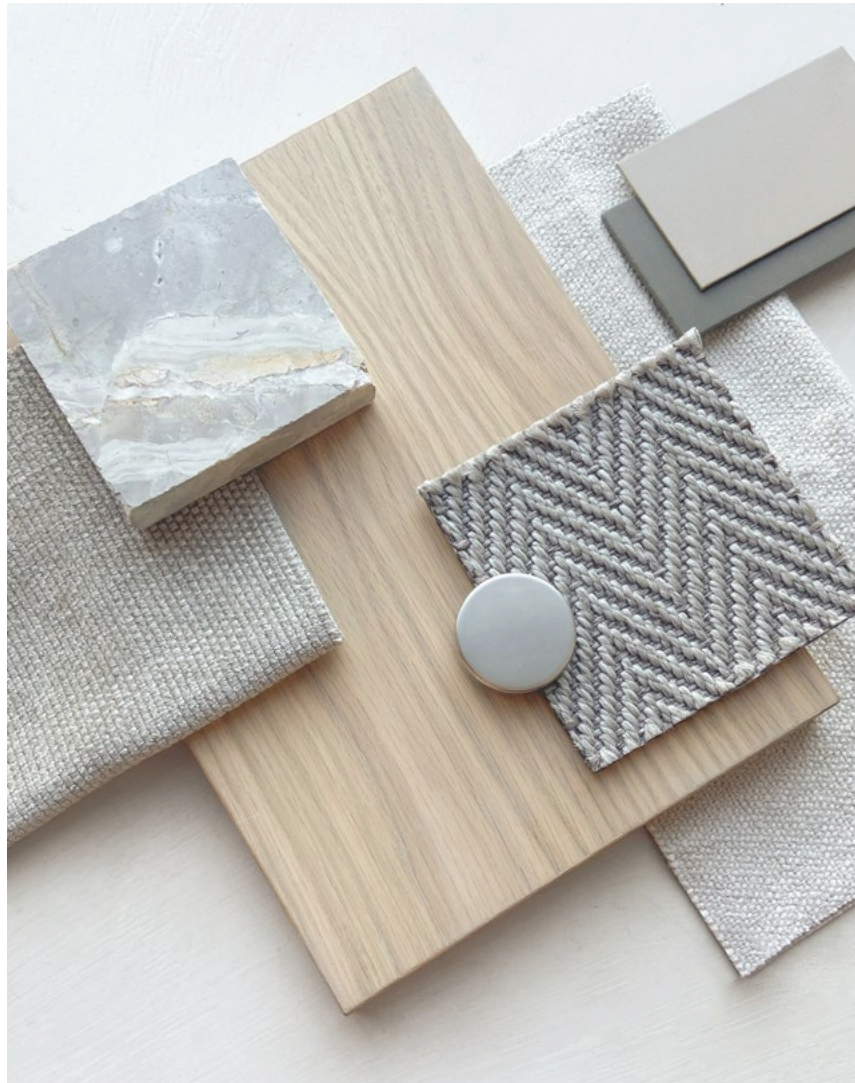
Classification EN 1307 and EN 13501

FRANKLY
AMSTERDAM

CONTRACT COLLECTION - NEXT STEP



COLORS



ABOUT NEXT STEP

Manufacturing method	Flatwoven
Pile surface	Loop pile
Pile composition	100% P.P.
Carpet thickness	± 5 mm
Fire classification	Cfl-s1
Colors	5 standard colors
Use	Indoor and outdoor

Next Step catches the eye through its expressive graphic features. A classic herringbone pattern that creates a statement, yet stays subtle through its natural color tones. Next step is made in the Netherlands from 100% durable, high quality P.P, and complies with the highest level of contract quality tests. This carpet can be used for residential and commercial installations.

Due to the different production dyelots, slight variation in color tone may occur. A small deviation from the sample swatches are not considered flaws.

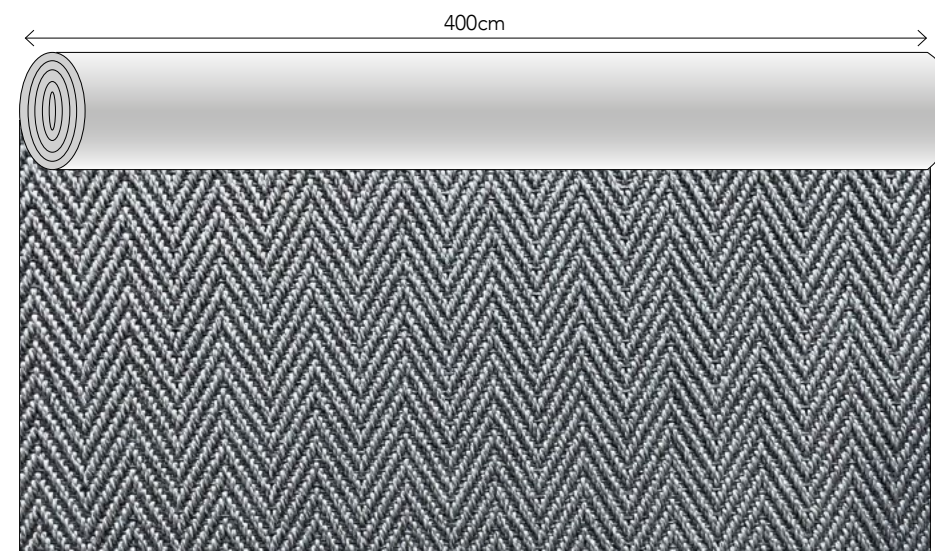
Rugs with a folded padded edge will have felted padding at the bottom, therefore they can only be used indoors and can not be used for stair runners. Please calculate a 10 cm margin around all edges for a rug with folded padded edge. Maximum rug width for this finish is 380 cm.

TECHNICAL INFORMATION

NEXT STEP

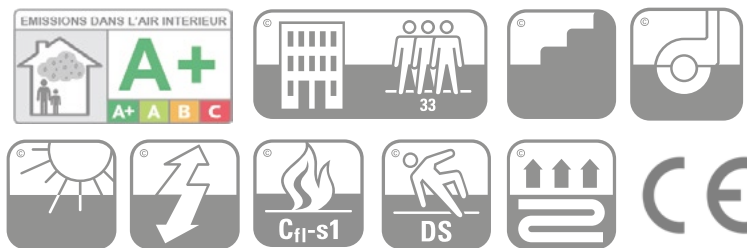
Manufacturing method	Flatwoven
Pile surface	Loop pile
Pile composition	100% P.P.
Carpet weight	± 1.900 g/m ²
Carpet thickness	± 5 mm
Backing	Gel backing
Roll width	4 meters
Fire classification	Cfl-s1
Colors	5 standard
Advantages	<ul style="list-style-type: none"> + suitable for indoor and outdoor use + suitable for residential and contract + available as rug, wall-to-wall carpet and stair runner + waterproof and UV proof + easy cleaning, even with bleach + castor proof

PATTERN DIRECTION



This pattern is not on scale, this image only shows the pattern direction

Please note that your order will be cut from a roll of 4 meters width.
Please include the cutting loss in your order. If you need any help calculating this, we are glad to be of service.



Classification EN 1307 and EN 13501-1:2018

PLEASE CONSULT OUR INSTALLATION GUIDE CONTAINING IMPORTANT INFORMATION RELATIVE TO THE PLANNING & INSTALLATION OF THIS PRODUCT.

INSTALLATION GUIDE

PLANNING & INSTALLATION NEXT STEP

You are considering the purchase of a beautiful high-quality carpet, but don't forget it needs a skilled installer to ensure its beauty is lasting. The best carpet installers are highly skilled, have great knowledge, will give excellent advice and take pride in their work. Always ensure your installer works to the national code of practice for carpet installation and selects the best materials and method of carpet laying for the individual project. We believe a site visit from your installer is an essential part of the process and that they should have seen samples of the materials you intend to install.

The following information is provided in good faith and no responsibility is accepted by Frankly Amsterdam for claims arising from any proposed installation methods.

NOTES

- Make sure to only fit rolls from the same batch next to each other, to avoid differences in appearance. Please consult with Frankly Amsterdam in advance about roll numbers related to different batches.
- The carpet lengths should always be fitted in the same direction within one room. We recommend fitting the carpet in all rooms or levels in one direction only, due to the clearly visible texture of flat woven carpet.
- In woven structures, where in machine direction the straight warp yarn cannot be noticed, cutting must be made exact along the pile-warp surface yarn. Never cut through the straight warp binding yarn, as this will give high risk of fraying.
- Do not cut the carpet from the back or double cut the carpet.
- Head seams can be finished with a metal binding strip. For example; head seams can be used with doorways, when carpet goes from hall areas into connecting rooms. Ensure that the seam is directly underneath the door leaf. The head seam must be covered with a metal binding strip.
- Where edges are cut to create a seam, the cut edges must be sealed using a proprietary seam sealant. The sealant must be allowed sufficient time to dry before forming the seam.
- Rubber underlayment is recommended for all wall-to-wall installations and area rugs.

FRANKLY
AMSTERDAM

CONTRACT COLLECTION - NO DOUBT



COLORS



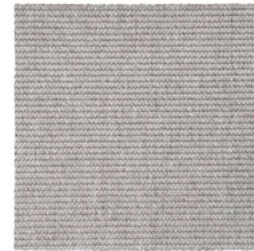
9101



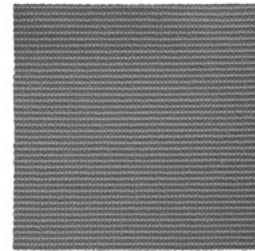
9102



9103



9104



9105

ABOUT NO DOUBT

Manufacturing method	Flatwoven
Pile surface	Loop pile
Pile composition	100% P.P.
Carpet thickness	± 5 mm
Fire classification	Dfl-s1
Colors	5 standard colors
Use	Indoor and outdoor

A flat woven carpet that brings confidence into any space. No Doubt is characterized by its strong personality: a carpet that defines the space while preserving harmony at the same time. No Doubt is made in the Netherlands from 100% P.P. and complies with high level contract quality tests. Its water and UV-resistance makes it perfect for both indoor and outdoor applications, and it's suitable for residential and commercial installations.

Due to the different production dyelots, slight variation in color tone may occur. A small deviation from the sample swatches are not considered flaws.

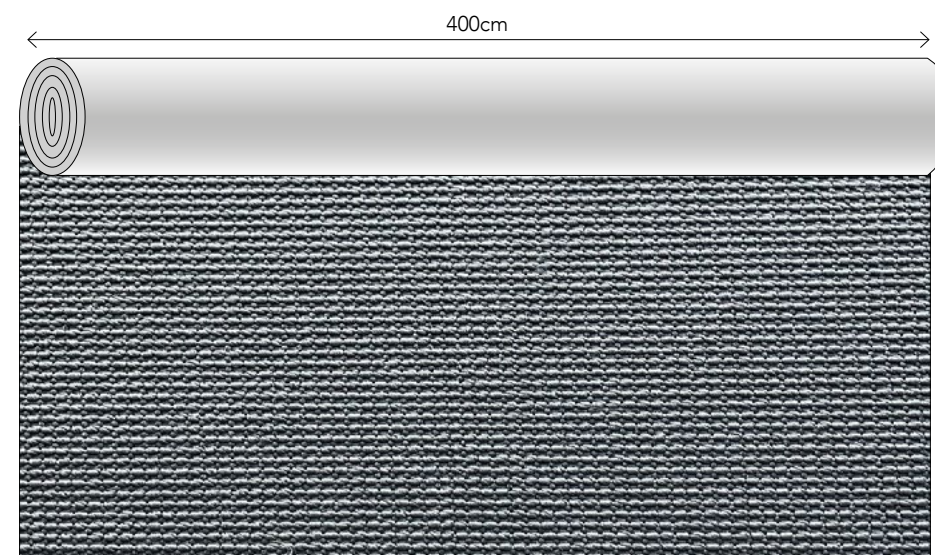
Rugs with a folded padded edge will have felted padding at the bottom, therefore they can only be used indoors and can not be used for stair runners. Please calculate a 10 cm margin around all edges for a rug with folded padded edge. Maximum rug width for this finish is 380 cm.

TECHNICAL INFORMATION

NO DOUBT

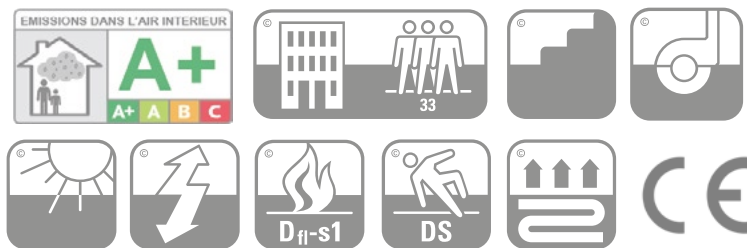
Manufacturing method	Flatwoven
Pile surface	Loop pile
Pile composition	100% P.P.
Carpet weight	± 1.950 g/m ²
Carpet thickness	± 5 mm
Backing	Gel backing
Roll width	4 meters
Fire classification	Dfl-s1
Colors	5 standard
Advantages	+ suitable for indoor and outdoor use + suitable for residential and contract + available as rug, wall-to-wall carpet and stair runner + waterproof and UV proof + easy cleaning, even with bleach + castor proof

PATTERN DIRECTION



This pattern is not on scale, this image only shows the pattern direction

Please note that your order will be cut from a roll of 4 meters width.
Please include the cutting loss in your order. If you need any help calculating this, we are glad to be of service.



Classification EN 1307 and EN 13501-1:2018

PLEASE CONSULT OUR INSTALLATION GUIDE CONTAINING IMPORTANT INFORMATION RELATIVE TO THE PLANNING & INSTALLATION OF THIS PRODUCT.

INSTALLATION GUIDE

PLANNING & INSTALLATION NO DOUBT

You are considering the purchase of a beautiful high-quality carpet, but don't forget it needs a skilled installer to ensure its beauty is lasting. The best carpet installers are highly skilled, have great knowledge, will give excellent advice and take pride in their work. Always ensure your installer works to the national code of practice for carpet installation and selects the best materials and method of carpet laying for the individual project. We believe a site visit from your installer is an essential part of the process and that they should have seen samples of the materials you intend to install.

The following information is provided in good faith and no responsibility is accepted by Frankly Amsterdam for claims arising from any proposed installation methods.

NOTES

- Make sure to only fit rolls from the same batch next to each other, to avoid differences in appearance. Please consult with Frankly Amsterdam in advance about roll numbers related to different batches.
- The carpet lengths should always be fitted in the same direction within one room. We recommend fitting the carpet in all rooms or levels in one direction only, due to the clearly visible texture of flat woven carpet.
- In woven structures, where in machine direction the straight warp yarn cannot be noticed, cutting must be made exact along the pile-warp surface yarn. Never cut through the straight warp binding yarn, as this will give high risk of fraying.
- Do not cut the carpet from the back or double cut the carpet.
- Head seams can be finished with a metal binding strip. For example; head seams can be used with doorways, when carpet goes from hall areas into connecting rooms. Ensure that the seam is directly underneath the door leaf. The head seam must be covered with a metal binding strip.
- Where edges are cut to create a seam, the cut edges must be sealed using a proprietary seam sealant. The sealant must be allowed sufficient time to dry before forming the seam.
- Rubber underlayment is recommended for all wall-to-wall installations and area rugs.

FRANKLY
AMSTERDAM

CONTRACT COLLECTION - ON RETURN



COLORS



6001



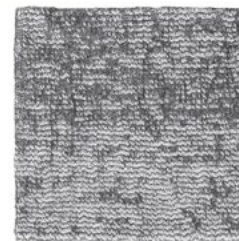
6002



6003



6004



6005



6006



6007



6008



6009



6010



6011



6012

ABOUT ON RETURN

Manufacturing method
Pile surface
Pile composition
Pile height
Carpet thickness
Fire classification
Colors

Machine woven
Tip-shear
100% recycled plastic
± 9,0 mm
± 11,0 mm
Cfl-s1
12 standard colors, custom colors
available on request from 200 m²

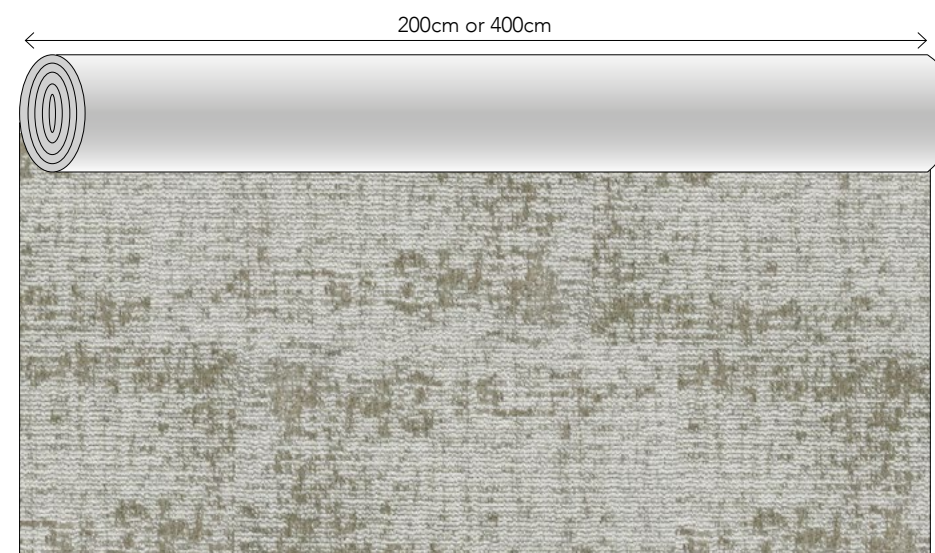
This carpet is eco-friendly by using recycled nylon, made from plastic waste recovered from the world's oceans and marine industries. Woven in a loop pile with tip-shear the textured surface gives a random look of cut & loop yarns. The carpet is soft to the touch and due to the superior durability suited for soft commercial applications such as hotel rooms or executive offices.

TECHNICAL INFORMATION

ON RETURN

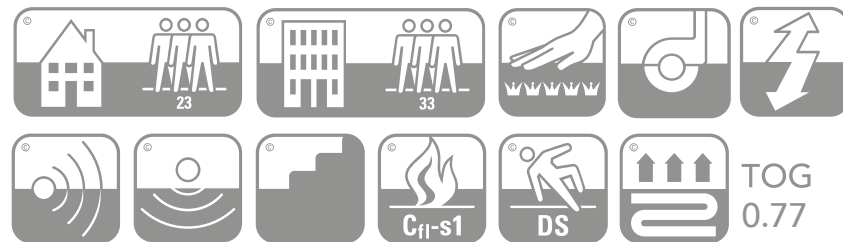
Manufacturing method	Machine woven
Pile surface	Tip-shear
Pile composition	100% recycled plastic
Pile weight	± 1.900 g/m ²
Carpet weight	± 2.800 g/m ²
Pile height	± 9,0 mm
Carpet thickness	± 11,0 mm
Backing	Jute & latex
Roll width	2 or 4 meters
Fire classification	Cfl-s1
Colors	12 standard colors, custom colors available on request
Advantages	+ suitable for residential as well as contract + made from regenerated nylon + environmentally friendly & sustainable + long-lasting & fire retardent + castor proof

PATTERN DIRECTION



This pattern is not on scale, this image only shows the pattern direction

Please note that your order will be cut from a roll of 2 meters or 4 meters width. Please include the cutting loss in your order. If you need any help calculating this, we are glad to be of service.



Classification EN 1307:2014 and EN 14041:2004

PLEASE CONSULT OUR INSTALLATION GUIDE CONTAINING IMPORTANT INFORMATION RELATIVE TO THE PLANNING & INSTALLATION OF THIS PRODUCT.

INSTALLATION GUIDE

PLANNING & INSTALLATION ON RETURN

You are considering the purchase of a beautiful high-quality carpet, but don't forget it needs a skilled installer to ensure its beauty is lasting. The best carpet installers are highly skilled, have great knowledge, will give excellent advice and take pride in their work. Always ensure your installer works to the national code of practice for carpet installation and selects the best materials and method of carpet laying for the individual project. We believe a site visit from your installer is an essential part of the process and that they should have seen samples of the materials you intend to install.

The following information is provided in good faith and no responsibility is accepted by Frankly Amsterdam for claims arising from any proposed installation methods.

PHASE	OPERATION/DESCRIPTION	STRETCH FITTING METHOD	DOUBLE-STICK FITTING METHOD
1) Project Planning	1.1) Seaming/joining (Note 1) 1.2) Multi width seaming (Note 2)	Side-to-side only No manufacturers selvedge	Side-to-side only No manufacturers selvedge
2) On site Preparation	2.1) Perimeter Gripper Type (Note 3) 2.2) Gripper Banking 2.3) Gripper Position (From Perimeter of room)	Short Pin Length Double row (Note 4) 6mm	Short Pin Length Single (Note 5) 6mm
3) Carpet Preparation	3.1) Carpet/Seam Cutting (Note 6) 3.2) Seam Sealing (cut edges) (Note 7) 3.3) Seaming Method (Note 8)	Back Cut Seam edges must be sealed Electrically activated/Heat Seamed	Back Cut Seam edges must be sealed N/A

NOTES

- GENERAL NOTES: Due to the manufacturing process of the 'On Return' series no two pieces of carpet will be the same and therefore there is no possible pattern repeat or pattern register. This will result in visual variations to all seams and are random.
- NOTE 1: The carpet is only recommended for side to side joining. End to side or end to end joins are not recommended in this carpet.
- NOTE 2: The 'On Return' series is manufactured with an open selvedge that must be trimmed back for seaming. Attention must be paid in both planning and seam execution, to the weave structure on the edges of the carpet body, to ensure a consistent seam is achieved. Upon receipt of the carpet we recommend close inspection of both edges, as it will be necessary to cut back into the body of the carpet to achieve a uniform join, which is consistent on both sides of the seam. We do not recommend that this carpet is cut through the last line of the protective open selvedge and butt joined.
- NOTE 3: This carpet should only be fitted on short pin length gripper.
- NOTE 4: With this carpet structure, a double row of regular width gripper will allow the carpet to be stretched to the required tension.
- NOTE 5: In double stick installations, perimeter gripper must be used.
- NOTE 6: This carpet can only be cut from the back. Using a sharp knife, cut cleanly along the line of the warpwise row. Care must be taken to cut a straight.
- NOTE 7: Where edges are cut to create a seam, the cut edges must be sealed using a proprietary seam sealant. The sealant must be allowed sufficient time to dry before forming the seam.
- NOTE 8: We recommend the use of a quality seaming tape. Where possible the use of an electrically activated seaming tape (Silvaseam) is recommended as this allows greater control in the formation of the seam.

ALL INSTALLATION MUST BE CARRIED OUT IN ACCORDANCE WITH BS5325:2001 THE INSTALLATION OF TEXTILE FLOOR COVERINGS - CODE OF PRACTICE

FRANKLY
AMSTERDAM

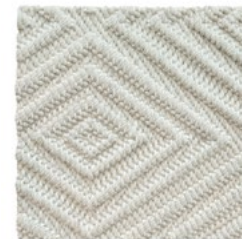
CONTRACT COLLECTION - OUT LINE



COLORS



1801



1802



1803



1804

ABOUT OUT LINE

Manufacturing method	Wilton weave
Pile surface	Loop pile
Pile composition	100% Wool
Carpet thickness	± 7 mm
Fire classification	Bfl-s1
Colors	4 standard colors
Use	Indoor

Designed to make a statement in any space with its captivating and intricate pattern, this design merges contemporary style with practical functionality for both residential and soft contract settings.

Made in Europe, Out Line showcases a unique geometric pattern, woven using the Wilton technique. Constructed from 100% wool, this rug offers durability, hypoallergenic properties, and temperature moderation.

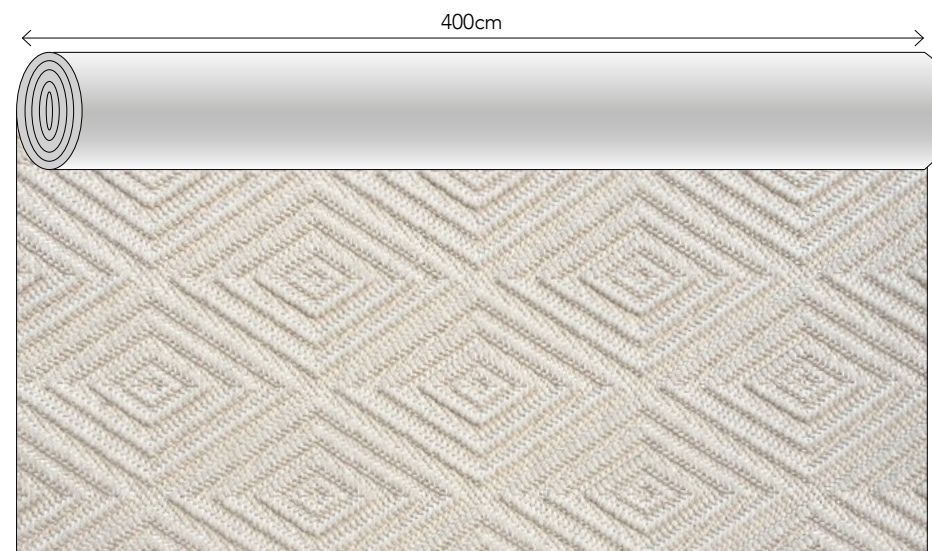
The artisan-made design showcases a perfect blend of softness and resilience, suitable as a custom-sized rug or runner. Available in four standard colors, to compliment any design scheme.

TECHNICAL INFORMATION

OUT LINE

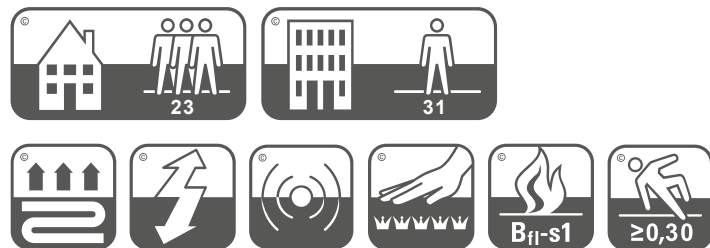
Manufacturing method	Wilton weave
Pile surface	Loop pile
Pile composition	100% Wool
Carpet weight	± 2.700 g/m ²
Carpet thickness	± 7 mm
Backing	Jute & cotton
Roll width	4 meters
Fire classification	Bfl-s1
Colors	4 standard colors
Advantages	+ available as rug and runner + suitable for heavy domestic use and soft contract + durable and hypoallergenic properties + natural backing with jute and cotton + custom shape possible
Note	Anti-slip underlayment is advised

PATTERN DIRECTION



This pattern is not on scale, this image only shows the pattern direction

Please note that your order will be cut from a roll of 4 meters width.
Please include the cutting loss in your order. If you need any help calculating this, we are glad to be of service.



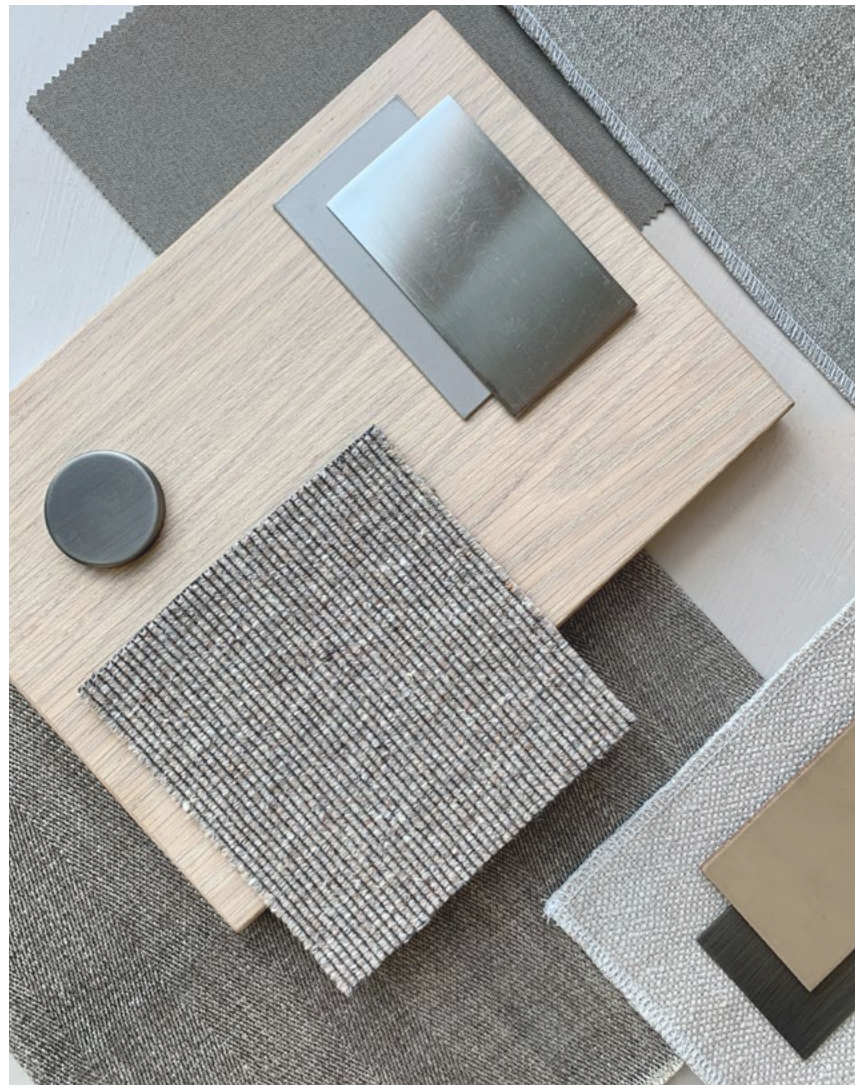
Classification EN 1307 and EN 13501

FRANKLY
AMSTERDAM

CONTRACT COLLECTION - ROLL OVER



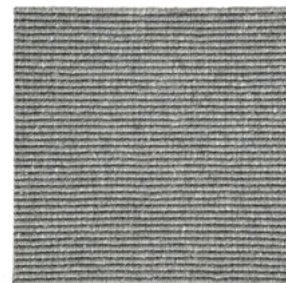
COLORS



6101



6102



6103



6104



6105



6106

ABOUT ROLL OVER

Manufacturing method	Machine woven
Pile surface	Loop Pile
Pile composition	100% Wool
Pile height	± 3,0 mm
Carpet thickness	± 4,0 mm
Fire classification	Bfl-s1
Colors	6 standard colors

A flatwoven carpet with timeless simplicity. Made from a blend of natural wool fibre, this carpet is engineered to perform in the most demanding residential and commercial applications.

Due to the characteristics of the natural materials used in this carpet, slight variation in color tone may occur. A small deviation from the sample swatches are not considered flaws.

TECHNICAL INFORMATION

ROLL OVER

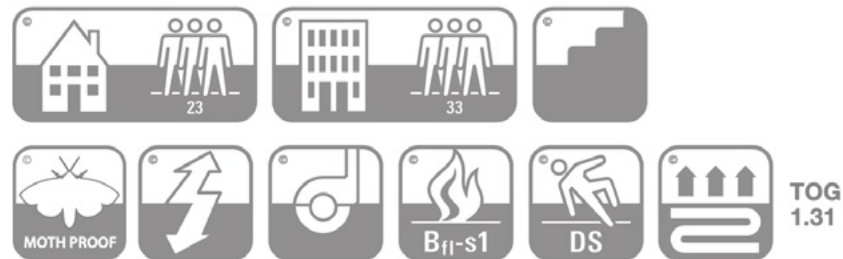
Manufacturing method	Machine woven
Pile surface	Loop Pile
Pile composition	100% Wool
Pile weight	± 1.060 g/m ²
Carpet weight	± 2.000 g/m ²
Pile height	± 3,0 mm
Carpet thickness	± 4,0 mm
Backing	P.P. & Latex
Roll width	2 or 4 meters
Fire classification	Bfl-s1
Colors	6 standard colors
Advantages	+ suitable for residential as well as contract + long-lasting & fire retardent + available as stair runner + castor proof + VOC-emission label A+

PATTERN DIRECTION



This pattern is not on scale, this image only shows the pattern direction

Please note that your order will be cut from a roll of 2 meters or 4 meters width. Please include the cutting loss in your order. If you need any help calculating this, we are glad to be of service.



Classification EN 1307:2014 and EN 14041:2004

This product fulfills the requirements for LEED certified buildings (EQC 4.3)

PLEASE CONSULT OUR INSTALLATION GUIDE CONTAINING IMPORTANT INFORMATION RELATIVE TO THE PLANNING & INSTALLATION OF THIS PRODUCT.

INSTALLATION GUIDE

PLANNING & INSTALLATION ROLL OVER

You are considering the purchase of a beautiful high-quality carpet, but don't forget it needs a skilled installer to ensure its beauty is lasting. The best carpet installers are highly skilled, have great knowledge, will give excellent advice and take pride in their work. Always ensure your installer works to the national code of practice for carpet installation and selects the best materials and method of carpet laying for the individual project. We believe a site visit from your installer is an essential part of the process and that they should have seen samples of the materials you intend to install.

The following information is provided in good faith and no responsibility is accepted by Frankly Amsterdam for claims arising from any proposed installation methods.

PHASE	OPERATION/DESCRIPTION	DOUBLE-STICK FITTING METHOD (Note 2)
1) Project Planning	1.1) Seaming/joining (Note 1) 1.2) Multi width seaming (Note 3)	Side-to-side only No manufacturers selvedge
2) On site Preparation	2.1) Perimeter Gripper Type (Note 4) 2.2) Gripper BankingSingle (Note 5) 2.3) Gripper Position (From Perimeter of room)	Short Pin Length Single (Note 5) 3mm
3) Carpet Preparation	3.1) Carpet/Seam Cutting (Note 6) 3.2) Seam Sealing (cut edges) (Note 7) 3.3) Seaming Method (Note 8)	Back Cut Seam edges must be sealed N/A

Rubber underlayment is recommended for all wall-to-wall installations and area rugs.

NOTES

- NOTE 1: The carpet is only recommended for side to side joining. End to side or end to end joins are not recommended in this carpet.
- NOTE 2: We do not recommend this carpet be stretch fitted. Carpet should be fully bonded to prepared sub floors, or installed using the Double-Stick method.
- NOTE 3: The 'Roll Over' series is manufactured with an open selvedge that must be trimmed back for seaming. Attention must be paid in both planning and seam execution, to the pattern match and weave structure on the edges of the carpet body, to ensure a consistent seam is achieved. Upon receipt of the carpet we recommend close inspection of both edges, as it will be necessary to cut back into the body of the carpet to achieve a uniform join and pattern match, which is consistent on both sides of the seam. We do not recommend that this carpet is cut through the last line of the protective open selvedge and butt joined.
- NOTE 4: This carpet should only be fitted on short pin length Blank Gripper.
- NOTE 5: Double stick installations will require the use of Blank Gripper which should be positioned 3 mm from the perimeter walls or skirting.
- NOTE 6: This carpet can only be cut from the back. Using a sharp knife, cut cleanly along the line of the warpwise row. Care must be taken to cut a straight line within the individual row and not to transgress to the rows on either side of the the cut line.
- NOTE 7: Where edges are cut to create a seam, the cut edges must be sealed using a proprietary seam sealant. The sealant must be allowed sufficient time to dry before forming the seam. Darker colours will offer a better visual seam as they will disguise better with the backing.
- NOTE 8: We recommend the use of a quality seaming tape. Where possible the use of an electrically activated seaming tape (Silvaseam) is recommended as this allows greater control in the formation of the seam

ALL INSTALLATION MUST BE CARRIED OUT IN ACCORDANCE WITH BS5325:2001 THE INSTALLATION OF TEXTILE FLOOR COVERINGS - CODE OF PRACTICE

FRANKLY
AMSTERDAM

CONTRACT COLLECTION - STEP UP 9



COLORS



ABOUT STEP UP 9

Manufacturing method	Machine knitted
Pile surface	Cut Pile
Pile composition	100% Pure New Wool
Pile height	± 7,2 mm
Carpet thickness	± 9,2 mm
Fire classification	Bfl-s1
Colors	20 standard colors, custom colors available on request from 200 m ²

This sophisticated velvet structure carpet uses high quality 100% pure new wool has a cut pile with a flawless surface finish. Suitable for residential and commercial installations. The 20 standard colors include delicate neutrals, mid tones and strong dark hues. Custom colours can be ordered for a minimum of 200 m².

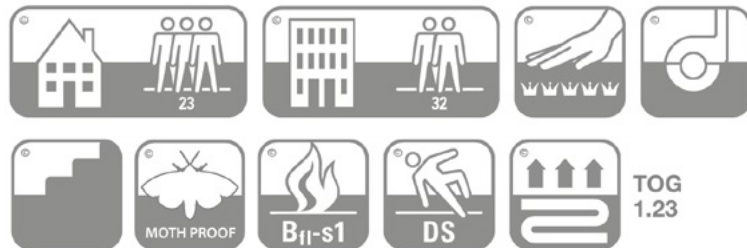
Due to the characteristics of the natural materials used in this carpet, slight variation in color tone may occur. A small deviation from the sample swatches are not considered flaws.

TECHNICAL INFORMATION

STEP UP 9

Manufacturing method	Machine knitted
Pile surface	Cut Pile
Pile composition	100% Pure New Wool
Pile weight	± 1.350 g/m ²
Carpet weight	± 2.850 g/m ²
Pile height	± 7,2 mm
Carpet thickness	± 9,2 mm
Backing	Action Back P.P.
Roll width	2 or 4 meters
Fire classification	Bfl-s1
Colors	20 standard colors, custom colors available on request
Advantages	+ suitable for residential as well as contract + available as stair runner + long-lasting & fire retardent + VOC-emission label A+ + castor proof

Please note that your order will be cut from a roll of 2 meters or 4 meters width. Please include the cutting loss in your order. If you need any help calculating this, we are glad to be of service.



Classification EN 1307:2014 and EN 14041:2004

This product fulfills the requirements for LEED certified buildings (EQC 4.3)

PLEASE CONSULT OUR INSTALLATION GUIDE CONTAINING IMPORTANT INFORMATION RELATIVE TO THE PLANNING & INSTALLATION OF THIS PRODUCT.

INSTALLATION GUIDE

PLANNING & INSTALLATION STEP UP 9

You are considering the purchase of a beautiful high-quality carpet, but don't forget it needs a skilled installer to ensure its beauty is lasting. The best carpet installers are highly skilled, have great knowledge, will give excellent advice and take pride in their work. Always ensure your installer works to the national code of practice for carpet installation and selects the best materials and method of carpet laying for the individual project. We believe a site visit from your installer is an essential part of the process and that they should have seen samples of the materials you intend to install.

The following information is provided in good faith and no responsibility is accepted by Frankly Amsterdam for claims arising from any proposed installation methods.

PHASE	OPERATION/DESCRIPTION	STRETCH FITTING METHOD	DOUBLE-STICK FITTING METHOD
1) Project Planning	1.1) Seaming/joining (Note 1) 1.2) Multi width seaming (Note 2)	Side-to-side only From same manufacturing face	Side-to-side only From same manufacturing face
2) On site Preparation	2.1) Perimeter Gripper Type (Note 3) 2.2) Gripper Banking 2.3) Gripper Position (From Perimeter of room)	Medium Pin Length Double row/Architectural (Note 4) 7mm	Medium Pin Length Single (Note 5) 7mm
3) Carpet Preparation	3.1) Carpet/Seam Cutting (Note 6) 3.2) Seam Sealing (cut edges) (Note 7) 3.3) Seaming Method (Note 8)	Face Cut (Through Pile) Seam edges must be sealed Electrically activated/Heat Seamed	Face Cut (Through Pile) Seam edges must be sealed N/A

NOTES

- NOTE 1: The carpet is only recommended for side to side joining. End to side or end to end joins are not recommended in this carpet.
- NOTE 2: The 'Step Up 9' series is produced on a face to face manufacturing system and care must be taken in planning to ensure that multi width installations are only planned and cut from one face of carpet
- NOTE 3: This carpet is best fitted on a medium pin length gripper.
- NOTE 4: With this carpet structure, a double row of regular width gripper or a single row of wide width architectural gripper will allow the carpet to be stretched to the required tension.
- NOTE 5: In double stick installations, perimeter gripper must be used.
- NOTE 6: This carpet must be cut through the face. Before cutting the carpet, use a pointed tool (bradawl, awl or similar tool) to separate the pile surface and create a straight line cutting mark in the pile by following through along the weave structure. Using a sharp seam cutter, follow the cut mark created in the pile, taking care not to cut across the lines of the weave structure.
- NOTE 7: Where edges are cut to create a seam, the cut edges must be sealed using a proprietary seam sealant. The sealant must be allowed sufficient time to dry.
- NOTE 8: We recommend the use of a quality seaming tape. Where possible the use of an electrically activated seaming tape (Silvaseam) is recommended as this allows greater control in the formation of the seam.

ALL INSTALLATION MUST BE CARRIED OUT IN ACCORDANCE WITH BS5325:2001 THE INSTALLATION OF TEXTILE FLOOR COVERINGS - CODE OF PRACTICE

FRANKLY
AMSTERDAM

CONTRACT COLLECTION - STEP UP 16



COLORS



ABOUT STEP UP 16

Manufacturing method	Machine knitted
Pile surface	Cut Pile
Pile composition	100% Pure New Wool
Pile height	± 14,0 mm
Carpet thickness	± 16,0 mm
Fire classification	Cfl-s1
Colors	9 standard colors, custom colors available on request from 100 m ²

This carpet is the ultimate knitted carpet for wall to wall installations. This heavy 100% pure new wool velvet structure is suited for residential and commercial environments. A true essential for all projects where underfoot comfort is required. Custom colours can be ordered for a minimum of 100 m².

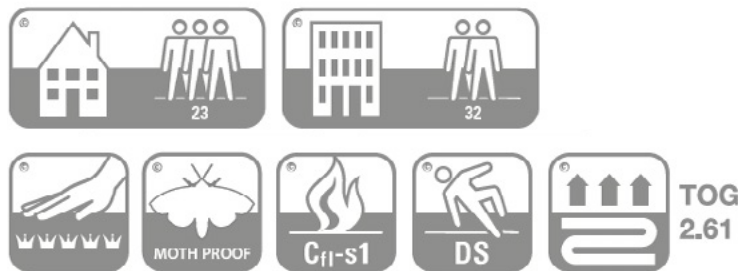
Due to the characteristics of the natural materials used in this carpet, slight variation in color tone may occur. A small deviation from the sample swatches are not considered flaws.

TECHNICAL INFORMATION

STEP UP 16

Manufacturing method	Machine knitted
Pile surface	Cut Pile
Pile composition	100% Pure New Wool
Pile weight	± 2.525 g/m ²
Carpet weight	± 4.025 g/m ²
Pile height	± 14,0 mm
Carpet thickness	± 16,0 mm
Backing	Action Back P.P.
Roll width	2 or 4 meters
Fire classification	Cfl-s1
Colors	9 standard colors, custom colors available on request
Advantages	+ suitable for residential as well as contract + long-lasting & fire retardent + VOC-emission label A+

Please note that your order will be cut from a roll of 2 meters or 4 meters width. Please include the cutting loss in your order. If you need any help calculating this, we are glad to be of service.



Classification EN 1307:2014 and EN 14041:2004
Step Up 16 fulfills the requirements for LEED certified buildings (EQC 4.3)

PLEASE CONSULT OUR INSTALLATION GUIDE CONTAINING IMPORTANT INFORMATION RELATIVE TO THE PLANNING & INSTALLATION OF THIS PRODUCT.

INSTALLATION GUIDE

PLANNING & INSTALLATION STEP UP 16

You are considering the purchase of a beautiful high-quality carpet, but don't forget it needs a skilled installer to ensure its beauty is lasting. The best carpet installers are highly skilled, have great knowledge, will give excellent advice and take pride in their work. Always ensure your installer works to the national code of practice for carpet installation and selects the best materials and method of carpet laying for the individual project. We believe a site visit from your installer is an essential part of the process and that they should have seen samples of the materials you intend to install.

The following information is provided in good faith and no responsibility is accepted by Frankly Amsterdam for claims arising from any proposed installation methods.

PHASE	OPERATION/DESCRIPTION	STRETCH FITTING METHOD	DOUBLE-STICK FITTING METHOD
1) Project Planning	1.1) Seaming/joining (Note 1)	Side-to-side only	Side-to-side only
2) On site Preparation	2.1) Perimeter Gripper Type (Note 2) 2.2) Gripper Banking 2.3) Gripper Position (From Perimeter of room)	Medium Pin Length Double row/Architectural (Note 3) 8mm	Medium Pin Length Single (Note 4) 8mm
3) Carpet Preparation	3.1) Carpet/Seam Cutting (Note 5) 3.2) Seam Sealing (cut edges) (Note 6) 3.3) Seaming Method (Note 7)	Face Cut (Through Pile) Seam edges must be sealed Electrically activated/Heat Seamed	Face Cut (Through Pile) Seam edges must be sealed N/A

NOTES

- NOTE 1: The carpet is only recommended for side to side joining. End to side or end to end joins are not recommended in this carpet.
- NOTE 2: This carpet is best fitted on a medium pin length gripper.
- NOTE 3: With this carpet structure, a double row of regular width gripper or a single row of wide width architectural gripper will allow the carpet to be stretched to the required tension.
- NOTE 4: In double stick installations, perimeter gripper must be used.
- NOTE 5: This carpet must be cut through the face. Before cutting the carpet, use a pointed tool (bradawl, awl or similar tool) to separate the pile surface and create a straight line cutting mark in the pile by following through along the weave structure. Using a sharp seam cutter, follow the cut mark created in the pile, taking care not to cut across the lines of the weave structure.
- NOTE 6: Where edges are cut to create a seam, the cut edges must be sealed using a proprietary seam sealant. The sealant must be allowed sufficient time to dry.
- NOTE 7: We recommend the use of a quality seaming tape. Where possible the use of an electrically activated seaming tape (Silvaseam) is recommended as this allows greater control in the formation of the seam.

ALL INSTALLATION MUST BE CARRIED OUT IN ACCORDANCE WITH BS5325:2001 THE INSTALLATION OF TEXTILE FLOOR COVERINGS - CODE OF PRACTICE

RUG EDGE FINISHING OPTIONS



Overlock edge finish (1 cm)

This edge finish is available for:

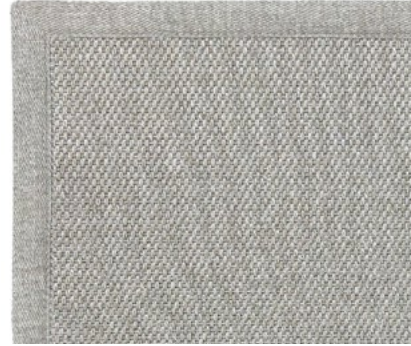
- All Star
- Day Off
- Easy Going
- Front Row
- Good Life
- High Tide
- Next Step
- No Doubt
- On Return (straight or rounded corner)
- Step up 9 (straight or rounded corner)



Wool overlock edge finish

This edge finish is available for:

- Line Up
- Out Line
- Lay Out



Border finish (3cm)

This edge finish is available for:

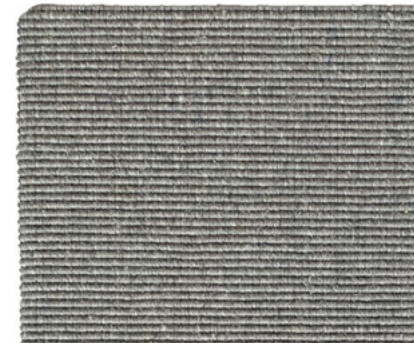
- All Star
- Day Off
- Easy Going
- Front Row
- Good Life
- High Tide
- No Doubt



Hand shaven edge finish

This edge finish is available for:

- Step Up 16.

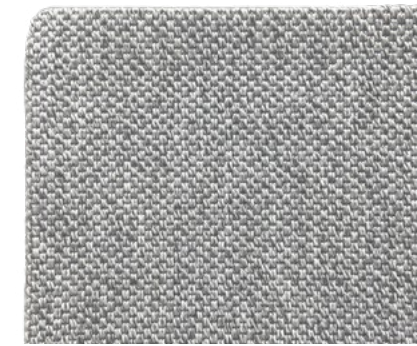


Folded edge finish

This edge finish is available for:

- Roll Over

For rugs with a folded edge please calculate a 10cm margin around all edges. Maximum rug width for this finish is 380 cm.



Folded padded edge finish

This edge finish is available for:

- All Star
- Front Row
- Next Step
- No Doubt

Please calculate a 10cm margin around all edges for a rug with folded padded edge. Maximum rug width for this finish is 380 cm.

Rugs with a folded padded edge will have felted padding at the bottom, therefore they can only be used indoors and can not be used for stair runners.

MAXIMUM RUG SIZES WITH EDGE FINISHING

ARTICLE OVERLOCK EDGE

All Star	400 x 2000 cm
Day Off	400 x 700 cm, 300 x 700 cm, 200 x 800 cm
Easy Going	400 x 700 cm, 300 x 700 cm, 200 x 800 cm
Front Row	400 x 2000 cm
Good Life	400 x 700 cm, 300 x 700 cm, 200 x 800 cm
High Tide	400 x 700 cm, 300 x 700 cm, 200 x 800 cm
Lay Out	400 x 2000 cm
Line Up	400 x 2000 cm
Next Step	400 x 2000 cm
No Doubt	400 x 2000 cm
On Return	400 x 700 cm, 300x 7 00 cm, 200 x 800 cm
Out Line	400 x 2000 cm
Step Up 9	400 x 600 cm, 300 x 700 cm, 200 x 800 cm

ARTICLE BORDER FINISH

All Star	400 x 2000 cm
Day Off	400 x 700 cm, 300 x 700 cm, 200 x 800 cm
Easy Going	400 x 700 cm, 300 x 700 cm, 200 x 800 cm
Front Row	400 x 2000 cm
Good Life	400 x 700 cm, 300 x 700 cm, 200 x 800 cm
High Tide	400 x 700 cm, 300 x 700 cm, 200 x 800 cm
No Doubt	400 x 2000 cm

ARTICLE HAND SHAVEN EDGE FINISH

Step Up 16	400 x 600 cm, 300 x 700 cm, 200 x 800 cm
------------	------------------------------------------

ARTICLE FOLDED EDGE FINISH

All Star	380 x 380 cm
Front Row	380 x 380 cm
Next Step	380 x 380 cm
No Doubt	380 x 380 cm
Roll Over	400 x 2000 cm

FRANKLY
AMSTERDAM