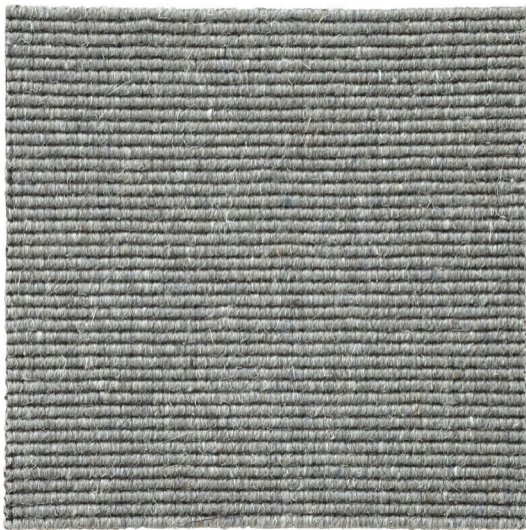


FRANKLY
AMSTERDAM



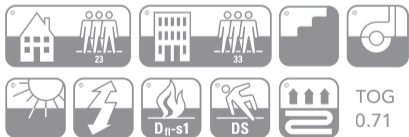


ROLL OVER

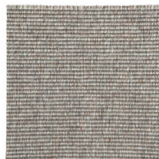
Manufacturing	Flatwoven
Pile surface	Loop pile
Material	100% Wool
Carpet weight	± 2.000 g/m
Carpet thickness	± 4 mm
Roll width	2 or 4 meters
Backing	P.P. + Cotton + Latex
Fire classification	Bfl-s1
Colors	6 standard
Delivery time	1 - 6 weeks
Advantages	+ suitable for residential as well as contract + long-lasting & fire retardent + available as stair runner + castor proof + VOC-emission label A+
Installation	Please reference our digital contract brochure. Rubber underlayment is recommended for all wall-to-wall installations and area rugs.

A flatwoven carpet with timeless simplicity. Made from a blend of natural wool fibre, this carpet is engineered to perform in the most demanding residential and commercial applications.

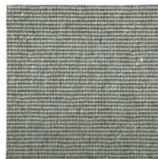
Due to the characteristics of the natural materials used in this carpet, slight variation in color tone may occur. A small deviation from the sample swatches are not considered flaws.



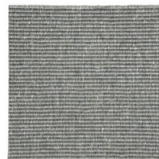
Classification EN 1307:2014 and EN 14041:2004



6101



6102



6103



6104



6105



6106

CARE INSTRUCTIONS

- We advise you to **vacuum** the carpet once or twice a week for domestic applications and light use areas. For commercial applications and heavier traffic use, daily vacuuming is advised to reduce the presence and buildup of loose dirt particles.
- The starting point should be varied each day to make sure that the carpet is not always brushed in the same direction.
- A new carpet will contain a proportion of loose short fibres, which should be removed by regular vacuuming. The removal of this short fibre from the carpet in the first few weeks after installation, in a process sometimes called "shedding".
- **Wet stains** should be wet vacuumed as soon as they occur to avoid staining, or soak up liquids with white absorbent cloth/towel.
- **High traffic area stains** from castor wheels, luggage and service trollies may result in rubber transfer markings. Rubber markings may become sticky or attract dirt from foot and wheeled traffic builds up on the original stain. Remove rubber from the fibres using an approved gel type solvent. The treated area must be thoroughly rinsed out otherwise any remaining residue will continue to attract dirt.
- **Light stains** can safely be treated with JAMES cleaning agents, which have been successfully tested on our products. Please follow

- the instructions of the JAMES staindisc delivered with the James starter kit. Treating stains within 24 hours increases the possibility of successful stain removal, nevertheless, complete removal can never be guaranteed. The usage of a cleaning agent that is not tested on our products cannot be guaranteed for safe cleaning.
- Please do not use highly acidic cleaning agents to remove stains from your carpet. This will cause discoloration of the yarn
 - In case of **heavy staining** or transferred dirt, we advise you to always have your rug cleaned by a specialist in rug cleaning.
 - When in **doubt**, please don't hesitate to contact us.

WARRANTY

- Frankly Amsterdam **guarantees** its carpets for 2 years of normal use.
- All our products are made with care. In case a **manufacturing defect** escaped our attention, please inform us within 14 days after delivery and leave the product unused.
- Small differences or **irregularities** in color, weft or size may occur. This is to be accepted when within normal commercial tolerances.
- Frankly Amsterdam will not accept any complaint if shading is concerned.

