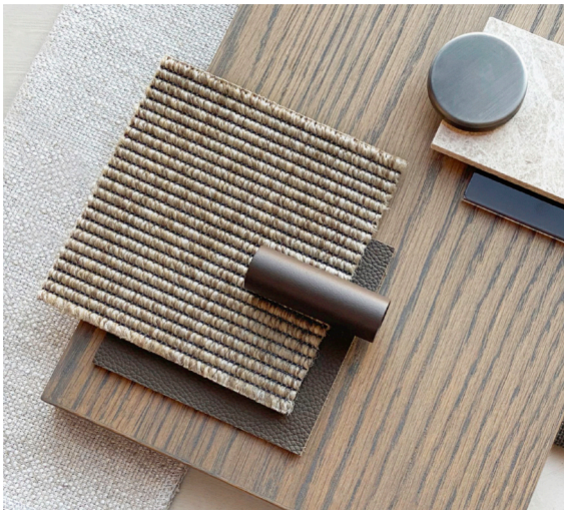


FRANKLY
AMSTERDAM





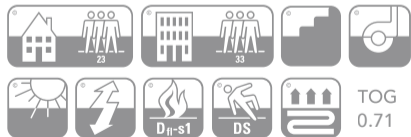
FRONT ROW

Manufacturing	Flatwoven
Pile surface	Loop pile
Material	100% P.P.
Carpet weight	± 1.650 g/m ²
Carpet thickness	± 4 mm
Roll width	4 meters
Backing	Gel Backing
Fire classification	Cfl-s1
Colors	8 standard
Delivery time	1 - 6 weeks
Advantages	+ suitable for indoor and outdoor use + suitable for residential and contract + available as wall-to-wall, rug and stair runner + waterproof and UV proof + easy cleaning, even with bleach + castor proof
Installation	Please reference our digital contract brochure. Rubber underlayment is recommended for all wall-to-wall installations and area rugs.

A flat woven carpet that expresses itself through its timeless pattern. Front Row is delicate to the eye, yet hardwearing and sturdy to any floor it's laid upon. The differently colored blend of fibers gives Front Row its traditional and natural look, without any of the disadvantages of natural fibers. Front Row is tested to guarantee maximum resistance to light and weather conditions, and complies with the highest level of contract quality tests. Suitable for indoor and outdoor use, both residential and commercial installations.

Due to the different production dyelots, slight variation in color tone may occur. A small deviation from the sample swatches are not considered flaws.

Rugs with a folded padded edge will have felted padding at the bottom, therefore they can only be used indoors and can not be used for stair runners. Please calculate a 10 cm margin around all edges for a rug with folded padded edge. Maximum rug width for this finish is 380 cm.



Classification EN 1307:2014 and EN 14041:2004



8901



8902



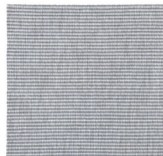
8903



8904



8905



8906



8907



8908

CARE INSTRUCTIONS

- We advise you to **vacuum** the carpet once or twice a week for domestic applications and light use areas. For commercial applications and heavier traffic use, daily vacuuming is advised to reduce the presence and buildup of loose dirt particles.
- For flat weave carpets use a suction only vacuum to prevent distortion or pilling of the carpet surface. Do not use the brush or beater bar.
- While vacuuming, the starting point should be varied each time to make sure that the carpet is not always brushed in the same direction.
- **Wet stains** need to be removed immediately. Absorb the stain using a strong absorbing paper (like kitchen paper) or clean towel.
- **High traffic area stains** from castor wheels, luggage and service trollies may result in rubber transfer markings. Remove rubber stains and markings from the fibres using an approved gel type solvent. The treated area must be thoroughly rinsed out
- **Light stains** can safely be treated with JAMES cleaning agents, which have been successfully tested on our products. Please follow the instructions of the JAMES staindisc delivered with the James starter kit. Treating stains within 24 hours increases the possibility of successful stain removal, nevertheless, complete removal can never be guaranteed. The usage of a cleaning agent that is not tested on our products cannot be guaranteed for safe cleaning.

- When **cleaning with bleach**, gently rub a water diluted bleach solution on the stain and let it sit for a few minutes. Don't let the bleach dry. Avoid soaking the carpet with bleach. Wipe off with water and allow to dry before use.
- In case of **heavy staining** or transferred dirt, we advise you to always have your rug cleaned by a specialist in rug cleaning.
- To avoid the carpet getting moldy while using **outdoor**, hang or lay down the rug in sunlight on a clean surface to dry.
- When you **store** the outdoor carpet (during cold or rainy seasons) it must be cleaned and dried properly first. Roll up the dry and clean carpet on a tube, wrap it in plastic and secure it with tape. Never fold the carpet while storing it.

WARRANTY

- Frankly Amsterdam **guarantees** its carpets for 2 years of normal use.
- All our products are made with care. In case a **manufacturing defect** escaped our attention, please inform us within 14 days after delivery and leave the product unused.
- Small differences or **irregularities** in color, weft or size may occur. This is to be accepted when within normal commercial tolerances.
- Frankly Amsterdam will not accept any complaint if shading is concerned.

