

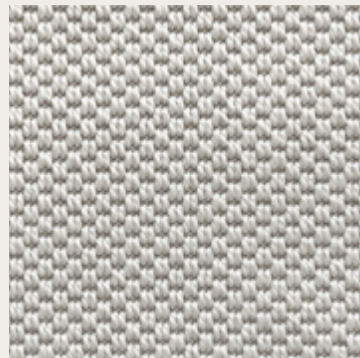
FRANKLY
AMSTERDAM

CONTRACT COLLECTION 2025



INDEX

This is an interactive file
by clicking on a product image you will go directly to the right page in this file
by clicking on our logo you will go back to this index



ALL STAR



DONE DEAL



EASY GOING



FRONT ROW



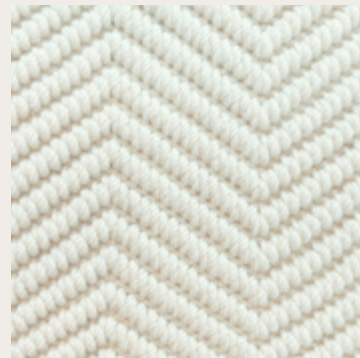
GOOD LIFE



HIGH TIDE



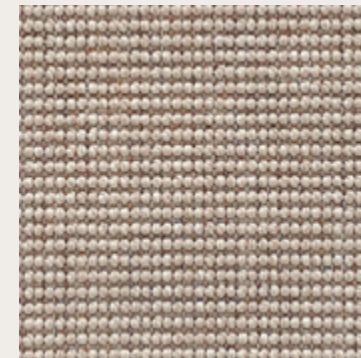
LAY OUT



LINE UP



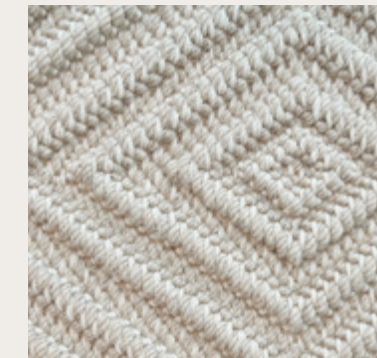
NEXT STEP



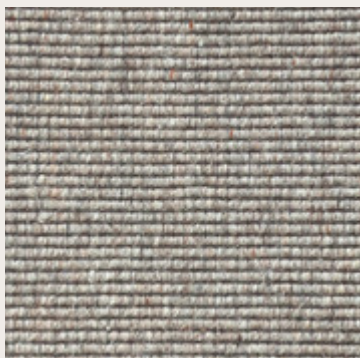
NO DOUBT



ON RETURN



OUT LINE



ROLL OVER



STEP UP 9



STEP UP 16



EDGE FINISHING OPTIONS



MAXMUM RUG SIZES

FRANKLY
AMSTERDAM

CONTRACT COLLECTION - ALL STAR



COLORS



ABOUT ALL STAR

Manufacturing method	Flatwoven
Pile surface	Loop pile
Pile composition	100% P.P.
Carpet thickness	± 5 mm
Fire classification	Cfl-s1 / Efl for color 8801 & 8808
Colors	11 standard colors
Use	Indoor and outdoor

All Star beautifully balances style and practicality into its weave. This flat woven carpet allows you to move around the space without any worries. Its water and UV-resistance makes it perfect for both indoor and outdoor applications, and it's suitable for residential and commercial installations.

Due to the different production dyelots, slight variation in color tone may occur. A small deviation from the sample swatches are not considered flaws.

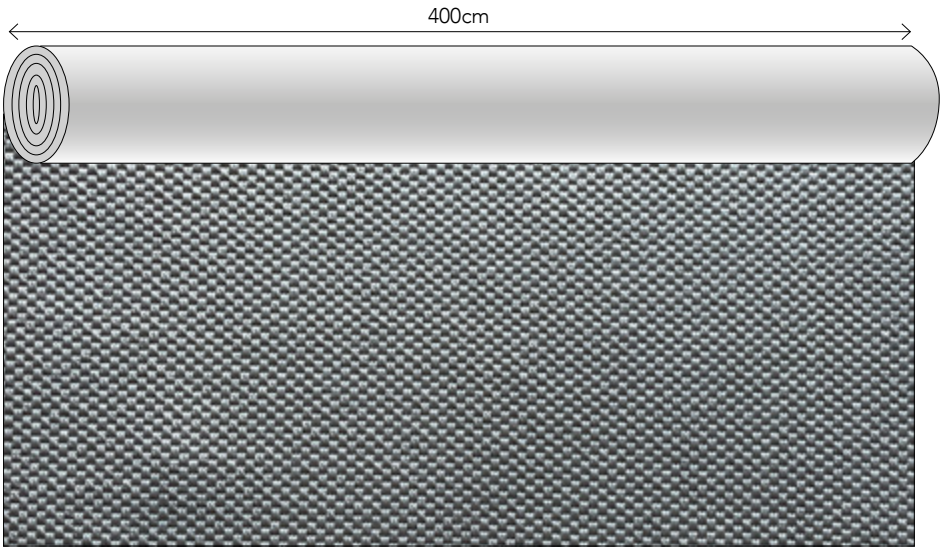
Rugs with a folded padded edge will have felted padding at the bottom, therefore they can only be used indoors and can not be used for stair runners. Please calculate a 10 cm margin around all edges for a rug with folded padded edge. Maximum rug width for this finish is 380 cm.

TECHNICAL INFORMATION

ALL STAR

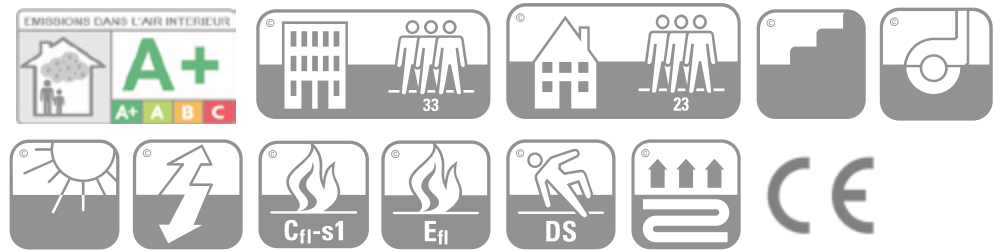
Manufacturing method	Flatwoven
Pile surface	Loop pile
Pile composition	100% P.P.
Carpet weight	± 1.650 g/m²
Carpet thickness	± 5 mm
Backing	Gel backing
	Color 8801, 8802 and 8808 have a Precoat Latex backing
Roll width	4 meters
Fire classification	Cfl-s1 / Efl for color 8801, 8802 & 8808
Colors	11 standard
Advantages	+ suitable for indoor and outdoor use + suitable for residential and contract + available as rug, wall-to-wall carpet and stair runner + waterproof and UV proof + easy cleaning, even with bleach + castor proof

PATTERN DIRECTION



This pattern is not on scale, this image only shows the pattern direction

Please note that your order will be cut from a roll of 4 meters width.
Please include the cutting loss in your order. If you need any help calculating this, we are glad to be of service.



Classification EN 1307 and EN 13501-1:2018

PLEASE CONSULT OUR INSTALLATION GUIDE CONTAINING IMPORTANT INFORMATION RELATIVE TO THE PLANNING & INSTALLATION OF THIS PRODUCT.

INSTALLATION GUIDE

PLANNING & INSTALLATION ALL STAR

You are considering the purchase of a beautiful high-quality carpet, but don't forget it needs a skilled installer to ensure its beauty is lasting. The best carpet installers are highly skilled, have great knowledge, will give excellent advice and take pride in their work. Always ensure your installer works to the national code of practice for carpet installation and selects the best materials and method of carpet laying for the individual project. We believe a site visit from your installer is an essential part of the process and that they should have seen samples of the materials you intend to install.

The following information is provided in good faith and no responsibility is accepted by Frankly Amsterdam for claims arising from any proposed installation methods.

NOTES

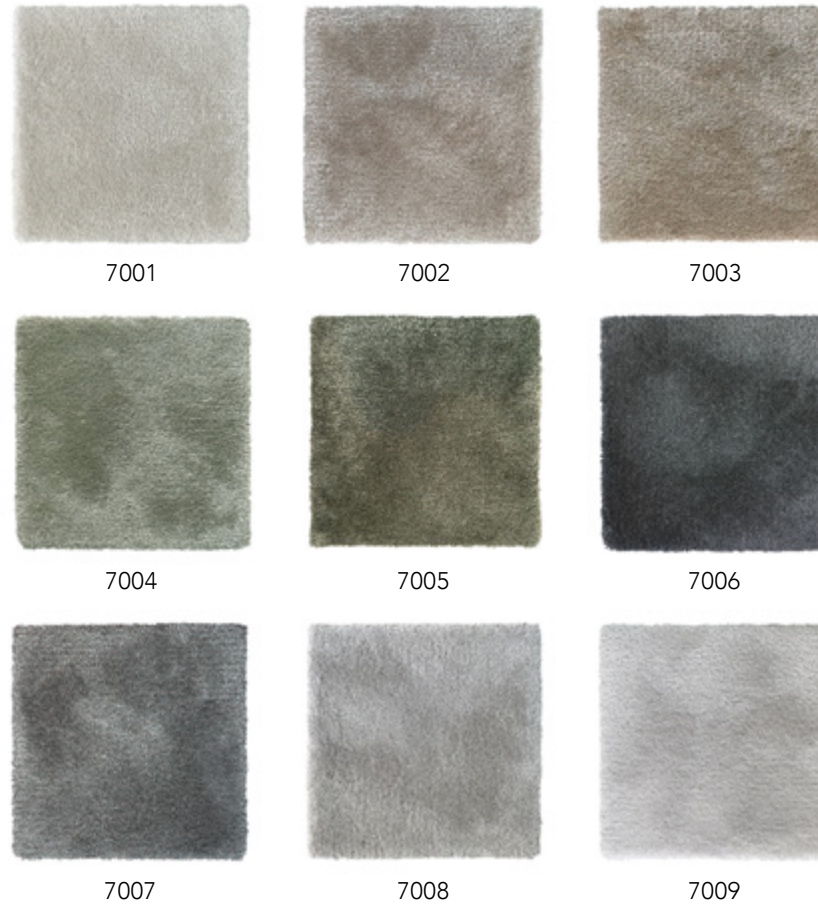
- Make sure to only fit rolls from the same batch next to each other, to avoid differences in appearance. Please consult with Frankly Amsterdam in advance about roll numbers related to different batches.
- The carpet lengths should always be fitted in the same direction within one room. We recommend fitting the carpet in all rooms or levels in one direction only, due to the clearly visible texture of flat woven carpet.
- In woven structures, where in machine direction the straight warp yarn cannot be noticed, cutting must be made exact along the pile-warp surface yarn. Never cut through the straight warp binding yarn, as this will give high risk of fraying.
- Do not cut the carpet from the back or double cut the carpet.
- Head seams can be finished with a metal binding strip. For example; head seams can be used with doorways, when carpet goes from hall areas into connecting rooms. Ensure that the seam is directly underneath the door leaf. The head seam must be covered with a metal binding strip.
- Where edges are cut to create a seam, the cut edges must be sealed using a proprietary seam sealant. The sealant must be allowed sufficient time to dry before forming the seam.
- Rubber underlayment is recommended for all wall-to-wall installations and area rugs.

FRANKLY
AMSTERDAM

CONTRACT COLLECTION - DONE DEAL



COLORS



ABOUT DONE DEAL

Manufacturing method	Hand tufted
Pile surface	Cut Pile
Pile composition	50% Wool, 50% Eucalyptus
Pile height	± 12 mm
Carpet thickness	± 13,5 mm
Fire classification	Cfl-s1
Colors	9 standard colors, custom colors available on request

This sophisticated cut pile carpet has the best of both worlds: the strength of wool combined with the luxurious shine of eucalyptus yarn. Done Deal can be ordered from 24 m² or more and is suitable for residential and soft contract use. The 9 standard colors include delicate neutrals to strong dark hues. Custom colours can be ordered on request from 24 m².

Due to the characteristics of the natural materials used in this carpet, slight variation in color tone may occur. A small deviation from the sample swatches are not considered flaws.

TECHNICAL INFORMATION

DONE DEAL

Manufacturing method	Hand tufted
Pile surface	Cut Pile
Pile composition	50% Wool + 50% Eucalyptus
Carpet weight	± 3.500 g/m²
Pile height	± 12 mm
Carpet thickness	± 13,5 mm
Backing	Natural latex + anti-slip
Fire classification	Cfl-s1
Colors	9 standard colors, custom colors available on request
Advantages	+ suitable for residential as well as softcontract + available as stair runner + long-lasting + custom colors available

FRANKLY
AMSTERDAM

CONTRACT COLLECTION - EASY GOING



COLORS



ABOUT EASY GOING

Manufacturing method	Flatwoven
Pile surface	Loop pile
Pile composition	100% Recycled PET
Carpet thickness	± 4 mm
Fire classification	Dfl-s1
Colors	6 standard colors
Use	Indoor and outdoor

This flat woven beauty is the perfect example of form meets function. Made from recycled plastic bottles, Easy Going is your environmentally friendly solution for indoor as well as outdoor living. Thanks to its strong and long-lasting yarn, it is very easy to clean with fibers that are water resistant and meet the UV resistance requirements. Above all these amazing aspects, Easy Going is soft to the touch, providing a similar visual effect of traditional natural flatwovens without the disadvantages of it.

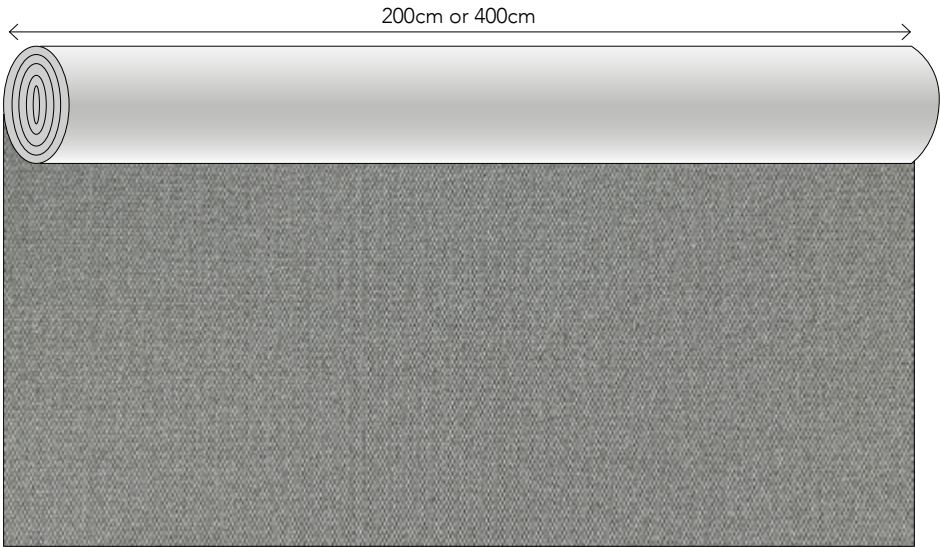
Due to the different production dyelots, slight variation in color tone may occur. A small deviation from the sample swatches are not considered flaws.

TECHNICAL INFORMATION

EASY GOING

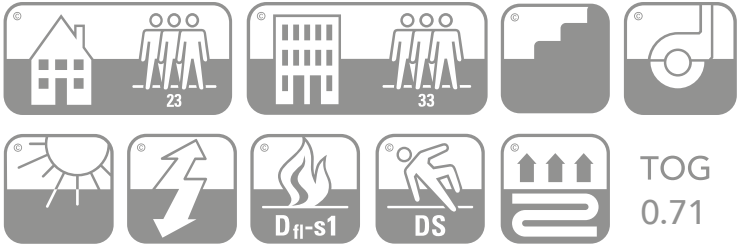
Manufacturing method	Flatwoven
Pile surface	Loop pile
Pile composition	100% Recycled PET
Carpet weight	± 2.400 g/m²
Carpet thickness	± 4 mm
Backing	P.P. + Latex
Roll width	2 or 4 meters
Fire classification	Dfl-s1
Colors	6 standard
Advantages	+ suitable for indoor and outdoor use + suitable for residential and contract + available as rug, wall-to-wall carpet and stair runner + waterproof and UV proof + easy cleaning, even with bleach + castor proof

PATTERN DIRECTION



This pattern is not on scale, this image only shows the pattern direction

Please note that your order will be cut from a roll of 2 meters or 4 meters width. Please include the cutting loss in your order. If you need any help calculating this, we are glad to be of service.



Classification EN 1307 and EN 14041

PLEASE CONSULT OUR INSTALLATION GUIDE CONTAINING IMPORTANT INFORMATION RELATIVE TO THE PLANNING & INSTALLATION OF THIS PRODUCT.

INSTALLATION GUIDE

PLANNING & INSTALLATION EASY GOING

You are considering the purchase of a beautiful high-quality carpet, but don’t forget it needs a skilled installer to ensure its beauty is lasting. The best carpet installers are highly skilled, have great knowledge, will give excellent advice and take pride in their work. Always ensure your installer works to the national code of practice for carpet installation and selects the best materials and method of carpet laying for the individual project. We believe a site visit from your installer is an essential part of the process and that they should have seen samples of the materials you intend to install.

The following information is provided in good faith and no responsibility is accepted by Frankly Amsterdam for claims arising from any proposed installation methods.

PHASE	OPERATION/DESCRIPTION	DOUBLE-STICK FITTING METHOD (Note 2)
1) Project Planning	1.1) Seaming/joining (Note 1) 1.2) Multi width seaming (Note 3)	Side-to-side only No manufacturers selvedge
2) On site Preparation	2.1) Perimeter Gripper Type (Note 4) 2.2) Gripper Banking 2.3) Gripper Position (From Perimeter of room)	Short Pin Length Single (Note 5) 3mm
3) Carpet Preparation	3.1) Carpet/Seam Cutting (Note 6) 3.2) Seam Sealing (cut edges) (Note 7) 3.3) Seaming Method (Note 8)	Back Cut Seam edges must be sealed N/A

Rubber underlayment is recommended for all wall-to-wall installations and area rugs.

NOTES

- NOTE 1: The cutting and seaming together of a flatweave is a precise and time consuming process with the resulting join likely to be variable in appearance. The durability of seams cannot be guaranteed in multi-width installations. We do not recommend either side to side or end to end joins in this flatweave product.
- NOTE 2: It is not recommended for this carpet to be stretch fitted. Carpet should be fully bonded to prepared sub floors, or installed using the Double-Stick method.
- NOTE 3: This carpet is manufactured with an open selvedge that must be trimmed back for seaming. When executing the seam, attention must be paid to the pattern and weave structure on the edges of the carpet body, to ensure a consistent seam is achieved. Upon receipt of the carpet we recommend close inspection of both edges, as it will be necessary to cut back into the body of the carpet.
- NOTE 4: This carpet should only be fitted on short pin length Blank Gripper.
- NOTE 5: Double stick installations will require the use of Blank Gripper which should be positioned 3 mm from the perimeter walls or skirting.
- NOTE 6: This carpet can only be cut from the back. Using a sharp knife, cut cleanly along the line of the warpwise row. Care must be taken to cut a straight line within the individual row and not to differ to the rows on either side of the cut line.
- NOTE 7: Where edges are cut to create a seam, the cut edges must be sealed using a proprietary seam sealant. The sealant must be allowed sufficient time to dry before forming the seam.
- NOTE 8: We recommend the use of a quality seaming tape. Where possible the use of an electrically activated seaming tape (Silvaseam) is recommended as this allows greater control in the formation of the seam.

ALL INSTALLATION MUST BE CARRIED OUT IN ACCORDANCE WITH BS5325:2001 THE INSTALLATION OF TEXTILE FLOOR COVERINGS - CODE OF PRACTICE

CARE INSTRUCTIONS

PREVENTIVE MEASURES

- We strongly advise installing walk-off mats at all external doorways and service areas where dirt, grease, and moisture are present. These mats can help reduce up to 80% of tracked soil particles, preventing them from coming into contact with your carpet. Walk-off mats should be large enough for at least two steps and should be regularly cleaned or replaced to maintain their effectiveness.

VACUUMING

- Frequent vacuuming is essential for reducing the buildup of loose soil particles that can cause premature wear. For areas with light use, vacuuming once a week is typically sufficient. In high-traffic areas, including commercial applications, daily vacuuming is recommended to maintain the carpet's appearance and longevity. Always vacuum before and after other cleaning processes. Make sure to keep the vacuum's bag or cylinder less than half full and replace filters 3-4 times per year, or more in high-use environments.

SPECIFIC VACUUM RECOMMENDATIONS

- For flat weave carpets, use a suction-only vacuum to prevent distortion or fuzzing of the carpet surface. Avoid beater bars or brush attachments.
- Always vary the starting point when vacuuming to avoid brushing the carpet in the same direction every time.
- Never shake loose-laid rugs by holding the perimeter edges. If needed, beat the rug from the back on a protective sheet to dislodge dust before vacuuming.

SPILL AND STAIN REMOVAL

The key to stain removal is immediate action. For wet spills, blot the area with a clean white cloth or paper towel until dry. Always work from the outer edge towards the center to prevent spreading the stain.

- For water-based stains (e.g., tea, coffee), use a diluted shampoo solution. Rinse thoroughly with clean water to remove residue.
- For oil or grease stains, use a solvent-based stain remover.
- For chewing gum, use a freezer spray to freeze the gum, then gently scrape it off.
- If stains persist, avoid overusing cleaning products and consult a professional cleaner.

CONTRACT-RELATED CLEANING

- (e.g., rubber marks from wheelchairs or trolleys): Rubber transfer markings from wheeled devices can appear in high-traffic areas. Treat these marks immediately to prevent them from attracting more dirt. Use a gel-type solvent and thoroughly rinse the treated area afterward to avoid residue buildup.

DEEP CLEANING

- For deep cleaning, we recommend a professional carpet cleaner using hot water extraction. This method effectively removes soil and debris. Allow the carpet to dry completely before use to prevent re-soiling and potential shrinkage.

INTERIM CLEANING METHOD

- If regular vacuuming and spot cleaning aren't enough, consider interim cleaning methods, such as low moisture soil extraction, for high-traffic areas. Always ensure the cleaning products are compatible with your carpet's fiber and test them on a small, inconspicuous area first.

DRYING AND STORAGE

- After cleaning, allow the carpet to dry completely before walking on it to avoid rapid re-soiling. In outdoor settings, dry the carpet in direct sunlight to prevent mold. When storing, clean and dry the carpet first, then roll it up (never fold) and wrap it in plastic to protect it from moisture.

SPECIAL NOTES

- Never use incompatible cleaning products that aren't recommended for your carpet type.
- Regularly clean your vacuum to ensure it's working efficiently. Replace belts, brushes, and filters as needed.
- For deep cleaning or stubborn stains, consult a professional carpet cleaner.ng.

WARRANTY

- Frankly Amsterdam guarantees its carpets for 2 years of normal use. If a manufacturing defect is discovered, please notify us within 14 days of delivery, leaving the product unused.
- Small differences in color, weave, or size may occur and are accepted within normal commercial tolerances. Frankly Amsterdam does not accept complaints regarding shading.

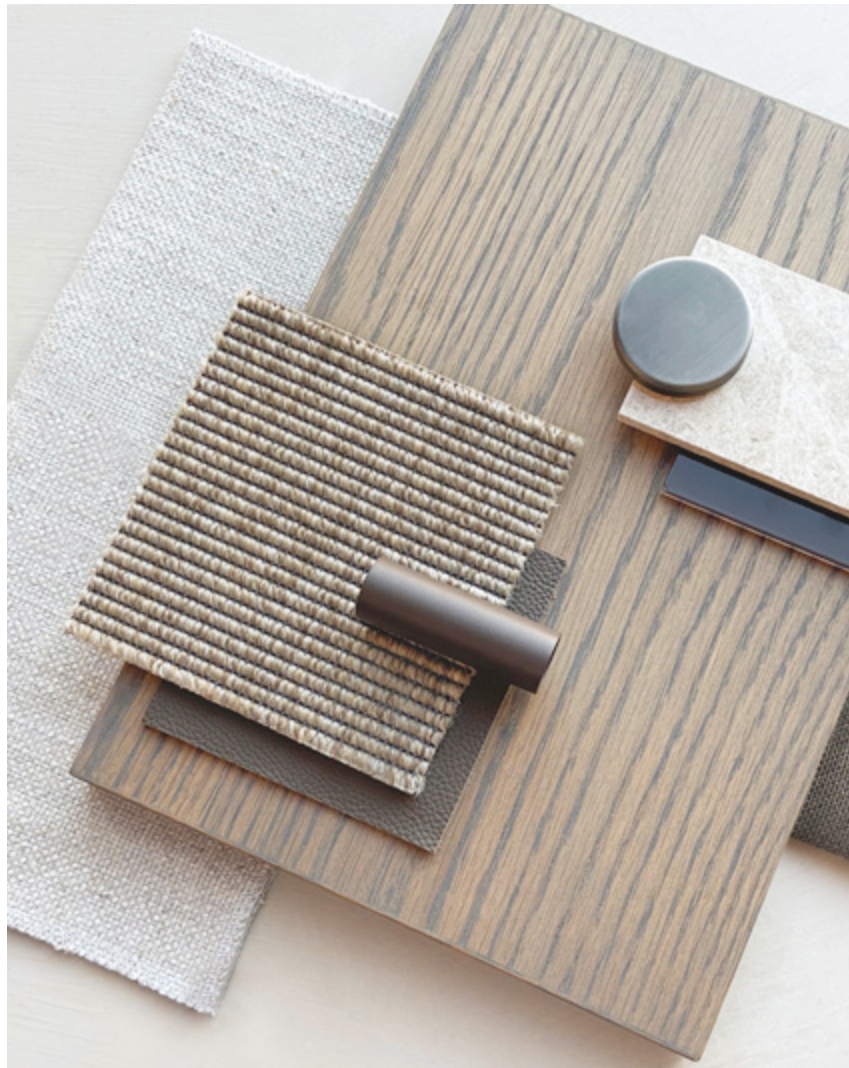
ALL INSTALLATION MUST BE CARRIED OUT IN ACCORDANCE WITH BS5325:2001 THE INSTALLATION OF TEXTILE FLOOR COVERINGS - CODE OF PRACTICE

FRANKLY
AMSTERDAM

CONTRACT COLLECTION - FRONT ROW



COLORS



ABOUT FRONT ROW

Manufacturing method	Flatwoven
Pile surface	Loop pile
Pile composition	100% P.P.
Carpet thickness	± 4 mm
Fire classification	Cfl-s1
Colors	8 standard colors
Use	Indoor and outdoor

A flat woven carpet that expresses itself through its timeless pattern. Front Row is delicate to the eye, yet hardwearing and sturdy to any floor it's laid upon. The differently colored blend of fibers gives Front Row it's traditional and natural look, without any of the disadvantages of natural fibers. Front Row is tested to guarantee maximum resistance to light and weather conditions, and complies with the highest level of contract quality tests. Suitable for indoor and outdoor use, both residential and commercial installations.

Due to the different production dyelots, slight variation in color tone may occur. A small deviation from the sample swatches are not considered flaws.

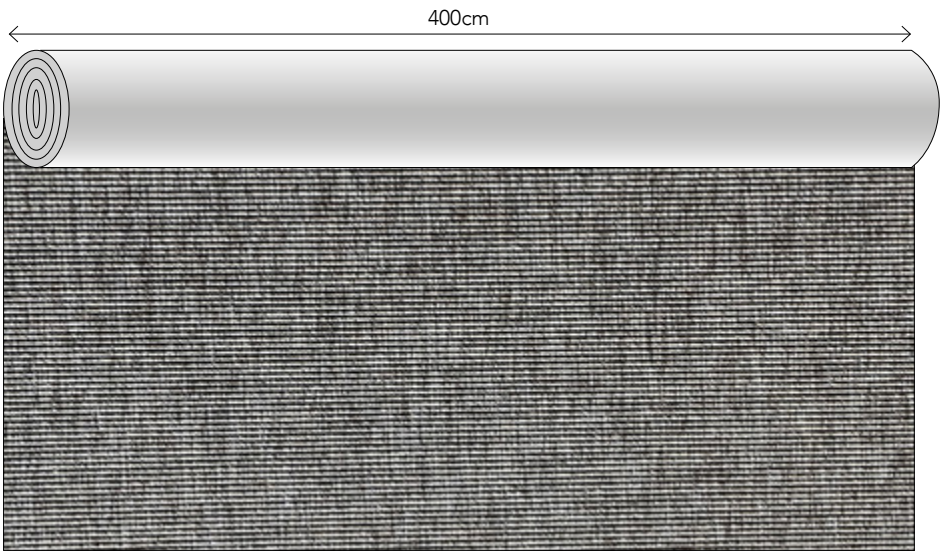
Rugs with a folded padded edge will have felted padding at the bottom, therefor they can only be used indoors and can not be used for stair runners. Please calculate a 10 cm margin around all edges for a rug with folded padded edge. Maximum rug width for this finish is 380 cm.

TECHNICAL INFORMATION

FRONT ROW

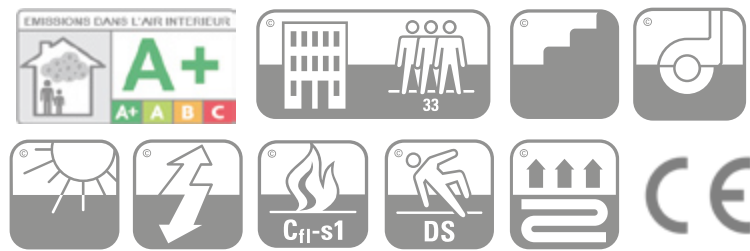
Manufacturing method	Flatwoven
Pile surface	Loop pile
Pile composition	100% P.P. $\pm 1.650 \text{ g/m}^2$
Carpet weight	$\pm 4 \text{ mm}$
Carpet thickness	Gel backing
Backing	4 meters
Roll width	Cfl-s1
Fire classification	8 standard
Colors	+ suitable for indoor and outdoor use
Advantages	+ suitable for residential and contract + available as rug, wall-to-wall carpet and stair runner + waterproof and UV proof + easy cleaning, even with bleach + castor proof

PATTERN DIRECTION



This pattern is not on scale, this image only shows the pattern direction

Please note that your order will be cut from a roll of 4 meters width.
Please include the cutting loss in your order. If you need any help
calculating this, we are glad to be of service.



Classification EN 1307 and EN 13501-1:2018

PLEASE CONSULT OUR INSTALLATION GUIDE CONTAINING IMPORTANT INFORMATION RELATIVE TO THE PLANNING & INSTALLATION OF THIS PRODUCT.

INSTALLATION GUIDE

PLANNING & INSTALLATION FRONT ROW

You are considering the purchase of a beautiful high-quality carpet, but don't forget it needs a skilled installer to ensure its beauty is lasting. The best carpet installers are highly skilled, have great knowledge, will give excellent advice and take pride in their work. Always ensure your installer works to the national code of practice for carpet installation and selects the best materials and method of carpet laying for the individual project. We believe a site visit from your installer is an essential part of the process and that they should have seen samples of the materials you intend to install.

The following information is provided in good faith and no responsibility is accepted by Frankly Amsterdam for claims arising from any proposed installation methods.

NOTES

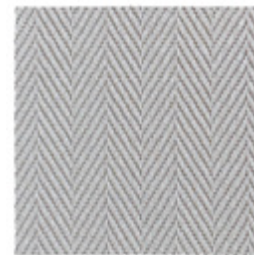
- Make sure to only fit rolls from the same batch next to each other, to avoid differences in appearance. Please consult with Frankly Amsterdam in advance about roll numbers related to different batches.
- The carpet lengths should always be fitted in the same direction within one room. We recommend fitting the carpet in all rooms or levels in one direction only, due to the clearly visible texture of flat woven carpet.
- In woven structures, where in machine direction the straight warp yarn cannot be noticed, cutting must be made exact along the pile-warp surface yarn. Never cut through the straight warp binding yarn, as this will give high risk of fraying.
- Do not cut the carpet from the back or double cut the carpet.
- Head seams can be finished with a metal binding strip. For example; head seams can be used with doorways, when carpet goes from hall areas into connecting rooms. Ensure that the seam is directly underneath the door leaf. The head seam must be covered with a metal binding strip.
- Where edges are cut to create a seam, the cut edges must be sealed using a proprietary seam sealant. The sealant must be allowed sufficient time to dry before forming the seam.
- Rubber underlayment is recommended for all wall-to-wall installations and area rugs.

FRANKLY
AMSTERDAM

CONTRACT COLLECTION - GOOD LIFE



COLORS



7301



7302



7303



7304

ABOUT GOOD LIFE

Manufacturing method	Flatwoven
Pile surface	Loop pile
Pile composition	100% Recycled PET
Carpet thickness	± 4 mm
Fire classification	Dfl-s1
Colors	4 standard colors
Use	Indoor and outdoor

This flat woven beauty is the perfect example of form meets function. Made from recycled plastic bottles, Good Life is your environmentally friendly solution for indoor as well as outdoor living. Thanks to it's strong and long-lasting yarn, it is very easy to clean with fibers that are water resistant and meet the UV resistance requirements. Above all these amazing aspects, Good Life is soft to the touch, providing a similar visual effect of traditional natural flatwovens without the disadvantages of it.

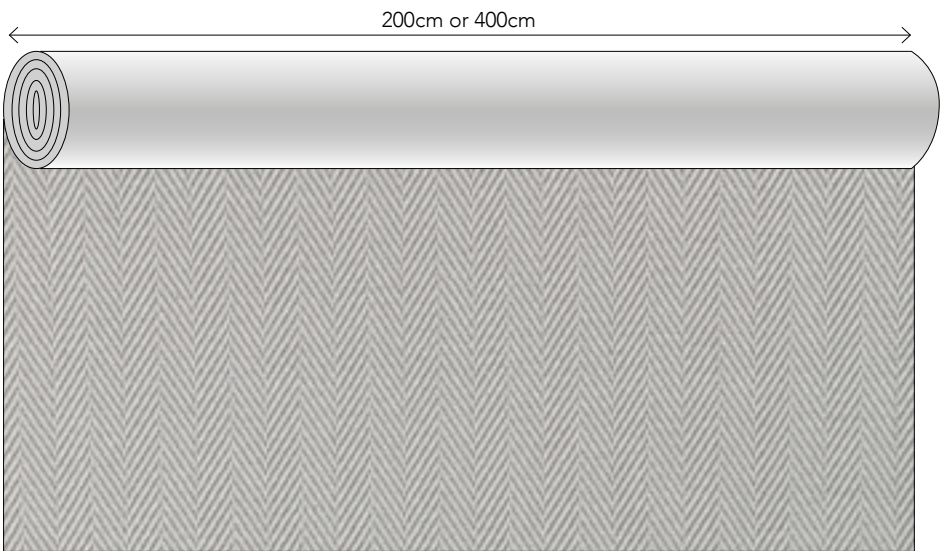
Due to the different production dyelots, slight variation in color tone may occur. A small deviation from the sample swatches are not considered flaws.

TECHNICAL INFORMATION

GOOD LIFE

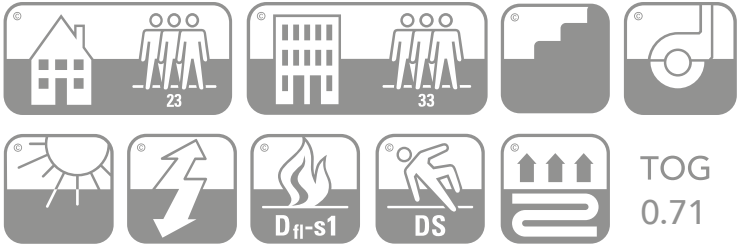
Manufacturing method	Flatwoven
Pile surface	Loop pile
Pile composition	100% Recycled PET
Carpet weight	± 2.300 g/m ²
Carpet thickness	± 4 mm
Backing	P.P. + Latex
Roll width	2 or 4 meters
Fire classification	Dfl-s1
Colors	4 standard
Advantages	+ suitable for indoor and outdoor use + suitable for residential and contract + available as rug, wall-to-wall carpet and stair runner + waterproof and UV proof + easy cleaning, even with bleach + castor proof

PATTERN DIRECTION



This pattern is not on scale, this image only shows the pattern direction

Please note that your order will be cut from a roll of 2 meters or 4 meters width. Please include the cutting loss in your order. If you need any help calculating this, we are glad to be of service.



Classification EN 1307 and EN 14041

PLEASE CONSULT OUR INSTALLATION GUIDE CONTAINING IMPORTANT INFORMATION RELATIVE TO THE PLANNING & INSTALLATION OF THIS PRODUCT.

INSTALLATION GUIDE

PLANNING & INSTALLATION GOOD LIFE

You are considering the purchase of a beautiful high-quality carpet, but don’t forget it needs a skilled installer to ensure its beauty is lasting. The best carpet installers are highly skilled, have great knowledge, will give excellent advice and take pride in their work. Always ensure your installer works to the national code of practice for carpet installation and selects the best materials and method of carpet laying for the individual project. We believe a site visit from your installer is an essential part of the process and that they should have seen samples of the materials you intend to install.

The following information is provided in good faith and no responsibility is accepted by Frankly Amsterdam for claims arising from any proposed installation methods.

PHASE	OPERATION/DESCRIPTION	DOUBLE-STICK FITTING METHOD (Note 2)
1) Project Planning	1.1) Seaming/joining (Note 1) 1.2) Multi width seaming (Note 3)	Side-to-side only No manufacturers selvedge
2) On site Preparation	2.1) Perimeter Gripper Type (Note 4) 2.2) Gripper Banking 2.3) Gripper Position (From Perimeter of room)	Short Pin Length Single (Note 5) 3mm
3) Carpet Preparation	3.1) Carpet/Seam Cutting (Note 6) 3.2) Seam Sealing (cut edges) (Note 7) 3.3) Seaming Method (Note 8)	Back Cut Seam edges must be sealed N/A

Rubber underlayment is recommended for all wall-to-wall installations and area rugs.

NOTES

- NOTE 1: The cutting and seaming together of a flatweave is a precise and time consuming process with the resulting join likely to be variable in appearance. The durability of seams cannot be guaranteed in multi-width installations. We do not recommend either side to side or end to end joins in this flatweave product.
- NOTE 2: It is not recommended for this carpet to be stretch fitted. Carpet should be fully bonded to prepared sub floors, or installed using the Double-Stick method.
- NOTE 3: This carpet is manufactured with an open selvedge that must be trimmed back for seaming. When executing the seam, attention must be paid to the pattern and weave structure on the edges of the carpet body, to ensure a consistent seam is achieved. Upon receipt of the carpet we recommend close inspection of both edges, as it will be necessary to cut back into the body of the carpet.
- NOTE 4: This carpet should only be fitted on short pin length Blank Gripper.
- NOTE 5: Double stick installations will require the use of Blank Gripper which should be positioned 3 mm from the perimeter walls or skirting.
- NOTE 6: This carpet can only be cut from the back. Using a sharp knife, cut cleanly along the line of the warpwise row. Care must be taken to cut a straight line within the individual row and not to differ to the rows on either side of the cut line.
- NOTE 7: Where edges are cut to create a seam, the cut edges must be sealed using a proprietary seam sealant. The sealant must be allowed sufficient time to dry before forming the seam.
- NOTE 8: We recommend the use of a quality seaming tape. Where possible the use of an electrically activated seaming tape (Silvaseam) is recommended as this allows greater control in the formation of the seam.

ALL INSTALLATION MUST BE CARRIED OUT IN ACCORDANCE WITH BS5325:2001 THE INSTALLATION OF TEXTILE FLOOR COVERINGS - CODE OF PRACTICE

CARE INSTRUCTIONS

PREVENTIVE MEASURES

- We strongly advise installing walk-off mats at all external doorways and service areas where dirt, grease, and moisture are present. These mats can help reduce up to 80% of tracked soil particles, preventing them from coming into contact with your carpet. Walk-off mats should be of sufficient size to allow for at least two steps, and they should be regularly cleaned or replaced to maintain their effectiveness.

VACUUMING

- Frequent vacuuming is essential for reducing the buildup of loose soil particles that can cause premature wear. For areas with light use, vacuuming once a week is typically sufficient. In high-traffic areas, including commercial applications, daily vacuuming is recommended to maintain the carpet's appearance and longevity. Always vacuum before and after other cleaning processes. Make sure to keep the vacuum's bag or cylinder less than half full and replace filters 3-4 times per year, or more in high-use environments.

SPECIFIC VACUUM RECOMMENDATIONS

- For flat weave carpets, use a suction-only vacuum to prevent distortion or fuzzing of the carpet surface. Avoid using beater bars or brush attachments.
- Always vary the starting point when vacuuming to avoid brushing the carpet in the same direction every time.
- Never shake loose-laid rugs by holding the perimeter edges to avoid damage. If needed, beat the rug from the back, on a protective sheet, to dislodge dust and particles before vacuuming.

SPILL AND STAIN REMOVAL

The key to effective stain removal is immediate action. For wet spills, use a clean white cloth or paper towel to blot the area until the carpet surface is dry. Follow these steps:

- Work from the outer edge of the spill towards the center to prevent spreading the stain.
- Avoid rubbing the carpet to prevent damage and spreading the stain.
- For water-based stains (e.g., tea, coffee, juice), use a diluted shampoo solution to treat the area. Rinse thoroughly with clean water to remove any residue.
- For oil or grease-based stains, apply a solvent-based stain remover.
- For chewing gum, use a freezer-type spray to freeze the gum, then remove it by gently scraping it off.
- If stains persist after treatment, avoid overusing cleaning products and seek professional cleaning help.

CONTRACT-RELATED CLEANING

- (e.g., rubber marks from wheelchairs, luggage, or service trolleys): In areas with heavy traffic from wheeled devices, such as wheelchair ramps or lift cars, rubber transfer markings may appear. These should be treated immediately to prevent them from becoming sticky and attracting additional dirt. Use an approved gel-type solvent to remove these marks. Thoroughly rinse the treated area afterward to avoid any residue that could attract more dirt.

DEEP CLEANING

- For carpets that require deep cleaning, we recommend using a professional carpet cleaner. Hot water extraction is one of the most effective deep cleaning methods, using pressurized water to flush soil and debris from the carpet fibers. After cleaning, the carpet should be left to dry completely before use, to prevent rapid re-soiling and potential shrinkage.

INTERIM CLEANING METHOD

- If your carpet is in high-traffic areas and regular vacuuming and spot cleaning aren't enough, interim cleaning methods (e.g., low moisture soil extraction) can be performed. This system uses minimal moisture to clean the carpet while extracting soil.
- **Important:** Always ensure any cleaning process is done with the proper cleaning agents compatible with your carpet's fiber. Always test any product on a small, inconspicuous area before full application.

DRYING AND STORAGE

- After any cleaning, allow the carpet to dry completely before walking on it. Rapid re-soiling can occur if the carpet is walked on while still wet. In outdoor settings, hang or lay the carpet flat to dry in direct sunlight to prevent mold. When storing carpets, ensure they are cleaned and dried first, then roll them up carefully (never fold) and wrap them in plastic to protect them from moisture.

SPECIAL NOTES

- Never use incompatible cleaning products that are not recommended for your carpet type.
- Check and clean your vacuum regularly to ensure it is functioning efficiently. Replace belts, brushes, and filters as needed.
- For best results, it's always recommended to consult with a professional carpet cleaner for deep cleaning or heavy staining.

WARRANTY

- Frankly Amsterdam guarantees its carpets for 2 years of normal use.
- If a manufacturing defect is discovered, please notify us within 14 days of delivery, and leave the product unused.
- Small differences or irregularities in color, weft, or size may occur, and these are to be accepted within normal commercial tolerances.
- Frankly Amsterdam will not accept any complaints regarding shading.

ALL INSTALLATION MUST BE CARRIED OUT IN ACCORDANCE WITH BS5325:2001 THE INSTALLATION OF TEXTILE FLOOR COVERINGS - CODE OF PRACTICE

FRANKLY
AMSTERDAM

CONTRACT COLLECTION - HIGH TIDE



COLORS



7101



7102



7103



7104

ABOUT HIGH TIDE

Manufacturing method	Flatwoven
Pile surface	Loop pile
Pile composition	100% Recycled PET
Carpet thickness	± 4 mm
Fire classification	Dfl-s1
Colors	4 standard colors
Use	Indoor and outdoor

This flat woven beauty is the perfect example of form meets function. Made from recycled plastic bottles, High Tide is your environmentally friendly solution for indoor as well as outdoor living. Thanks to it's strong and long-lasting yarn, it is very easy to clean with fibers that are water resistant and meet the UV resistance requirements. Above all these amazing aspects, High Tide is soft to the touch, providing a similar visual effect of traditional natural flatwovens without the disadvantages of it.

Due to the different production dyelots, slight variation in color tone may occur. A small deviation from the sample swatches are not considered flaws.

TECHNICAL INFORMATION

HIGH TIDE

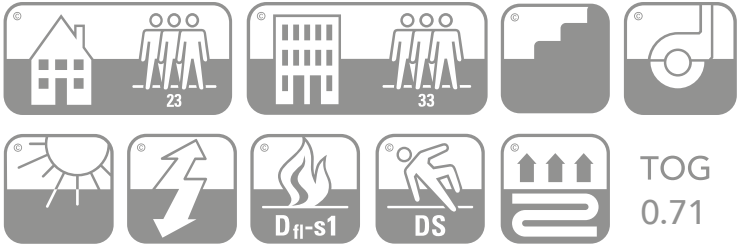
Manufacturing method	Flatwoven
Pile surface	Loop pile
Pile composition	100% Recycled PET
Carpet weight	± 2.600 g/m²
Carpet thickness	± 4 mm
Backing	P.P. + Latex
Roll width	2 or 4 meters
Fire classification	Dfl-s1
Colors	4 standard
Advantages	+ suitable for indoor and outdoor use + suitable for residential and contract + available as rug, wall-to-wall carpet and stair runner + waterproof and UV proof + easy cleaning, even with bleach + castor proof

PATTERN DIRECTION



This pattern is not on scale, this image only shows the pattern direction

Please note that your order will be cut from a roll of 2 meters or 4 meters width. Please include the cutting loss in your order. If you need any help calculating this, we are glad to be of service.



Classification EN 1307 and EN 14041

PLEASE CONSULT OUR INSTALLATION GUIDE CONTAINING IMPORTANT INFORMATION RELATIVE TO THE PLANNING & INSTALLATION OF THIS PRODUCT.

INSTALLATION GUIDE

PLANNING & INSTALLATION HIGH TIDE

You are considering the purchase of a beautiful high-quality carpet, but don’t forget it needs a skilled installer to ensure its beauty is lasting. The best carpet installers are highly skilled, have great knowledge, will give excellent advice and take pride in their work. Always ensure your installer works to the national code of practice for carpet installation and selects the best materials and method of carpet laying for the individual project. We believe a site visit from your installer is an essential part of the process and that they should have seen samples of the materials you intend to install.

The following information is provided in good faith and no responsibility is accepted by Frankly Amsterdam for claims arising from any proposed installation methods.

PHASE	OPERATION/DESCRIPTION	DOUBLE-STICK FITTING METHOD (Note 2)
1) Project Planning	1.1) Seaming/joining (Note 1) 1.2) Multi width seaming (Note 3)	Side-to-side only No manufacturers selvedge
2) On site Preparation	2.1) Perimeter Gripper Type (Note 4) 2.2) Gripper Banking 2.3) Gripper Position (From Perimeter of room)	Short Pin Length Single (Note 5) 3mm
3) Carpet Preparation	3.1) Carpet/Seam Cutting (Note 6) 3.2) Seam Sealing (cut edges) (Note 7) 3.3) Seaming Method (Note 8)	Back Cut Seam edges must be sealed N/A

Rubber underlayment is recommended for all wall-to-wall installations and area rugs.

NOTES

- NOTE 1: The cutting and seaming together of a flatweave is a precise and time consuming process with the resulting join likely to be variable in appearance. The durability of seams cannot be guaranteed in multi-width installations. We do not recommend either side to side or end to end joins in this flatweave product.
- NOTE 2: It is not recommended for this carpet to be stretch fitted. Carpet should be fully bonded to prepared sub floors, or installed using the Double-Stick method.
- NOTE 3: This carpet is manufactured with an open selvedge that must be trimmed back for seaming. When executing the seam, attention must be paid to the pattern and weave structure on the edges of the carpet body, to ensure a consistent seam is achieved. Upon receipt of the carpet we recommend close inspection of both edges, as it will be necessary to cut back into the body of the carpet.
- NOTE 4: This carpet should only be fitted on short pin length Blank Gripper.
- NOTE 5: Double stick installations will require the use of Blank Gripper which should be positioned 3 mm from the perimeter walls or skirting.
- NOTE 6: This carpet can only be cut from the back. Using a sharp knife, cut cleanly along the line of the warpwise row. Care must be taken to cut a straight line within the individual row and not to differ to the rows on either side of the cut line.
- NOTE 7: Where edges are cut to create a seam, the cut edges must be sealed using a proprietary seam sealant. The sealant must be allowed sufficient time to dry before forming the seam.
- NOTE 8: We recommend the use of a quality seaming tape. Where possible the use of an electrically activated seaming tape (Silvaseam) is recommended as this allows greater control in the formation of the seam.

ALL INSTALLATION MUST BE CARRIED OUT IN ACCORDANCE WITH BS5325:2001 THE INSTALLATION OF TEXTILE FLOOR COVERINGS - CODE OF PRACTICE

CARE INSTRUCTIONS

PREVENTIVE MEASURES

- We strongly advise installing walk-off mats at all external doorways and service areas where dirt, grease, and moisture are present. These mats can help reduce up to 80% of tracked soil particles, preventing them from coming into contact with your carpet. Walk-off mats should be of sufficient size to allow for at least two steps, and they should be regularly cleaned or replaced to maintain their effectiveness.

VACUUMING

- Frequent vacuuming is essential for reducing the buildup of loose soil particles that can cause premature wear. For areas with light use, vacuuming once a week is typically sufficient. In high-traffic areas, including commercial applications, daily vacuuming is recommended to maintain the carpet's appearance and longevity. Always vacuum before and after other cleaning processes. Make sure to keep the vacuum's bag or cylinder less than half full and replace filters 3-4 times per year, or more in high-use environments.

SPECIFIC VACUUM RECOMMENDATIONS

- For flat weave carpets, use a suction-only vacuum to prevent distortion or fuzzing of the carpet surface. Avoid using beater bars or brush attachments.
- Always vary the starting point when vacuuming to avoid brushing the carpet in the same direction every time.
- Never shake loose-laid rugs by holding the perimeter edges to avoid damage. If needed, beat the rug from the back, on a protective sheet, to dislodge dust and particles before vacuuming.

SPILL AND STAIN REMOVAL

The key to effective stain removal is immediate action. For wet spills, use a clean white cloth or paper towel to blot the area until the carpet surface is dry. Follow these steps:

- Work from the outer edge of the spill towards the center to prevent spreading the stain.
- Avoid rubbing the carpet to prevent damage and spreading the stain.
- For water-based stains (e.g., tea, coffee, juice), use a diluted shampoo solution to treat the area. Rinse thoroughly with clean water to remove any residue.
- For oil or grease-based stains, apply a solvent-based stain remover.
- For chewing gum, use a freezer-type spray to freeze the gum, then remove it by gently scraping it off.
- If stains persist after treatment, avoid overusing cleaning products and seek professional cleaning help.

CONTRACT-RELATED CLEANING

- (e.g., rubber marks from wheelchairs, luggage, or service trolleys): In areas with heavy traffic from wheeled devices, such as wheelchair ramps or lift cars, rubber transfer markings may appear. These should be treated immediately to prevent them from becoming sticky and attracting additional dirt. Use an approved gel-type solvent to remove these marks. Thoroughly rinse the treated area afterward to avoid any residue that could attract more dirt.

DEEP CLEANING

- For carpets that require deep cleaning, we recommend using a professional carpet cleaner. Hot water extraction is one of the most effective deep cleaning methods, using pressurized water to flush soil and debris from the carpet fibers. After cleaning, the carpet should be left to dry completely before use, to prevent rapid re-soiling and potential shrinkage.

INTERIM CLEANING METHOD

- If your carpet is in high-traffic areas and regular vacuuming and spot cleaning aren't enough, interim cleaning methods (e.g., low moisture soil extraction) can be performed. This system uses minimal moisture to clean the carpet while extracting soil.
- **Important:** Always ensure any cleaning process is done with the proper cleaning agents compatible with your carpet's fiber. Always test any product on a small, inconspicuous area before full application.

DRYING AND STORAGE

- After any cleaning, allow the carpet to dry completely before walking on it. Rapid re-soiling can occur if the carpet is walked on while still wet. In outdoor settings, hang or lay the carpet flat to dry in direct sunlight to prevent mold. When storing carpets, ensure they are cleaned and dried first, then roll them up carefully (never fold) and wrap them in plastic to protect them from moisture.

SPECIAL NOTES

- Never use incompatible cleaning products that are not recommended for your carpet type.
- Check and clean your vacuum regularly to ensure it is functioning efficiently. Replace belts, brushes, and filters as needed.
- For best results, it's always recommended to consult with a professional carpet cleaner for deep cleaning or heavy staining.

WARRANTY

- Frankly Amsterdam guarantees its carpets for 2 years of normal use.
- If a manufacturing defect is discovered, please notify us within 14 days of delivery, and leave the product unused.
- Small differences or irregularities in color, weft, or size may occur, and these are to be accepted within normal commercial tolerances.
- Frankly Amsterdam will not accept any complaints regarding shading.

ALL INSTALLATION MUST BE CARRIED OUT IN ACCORDANCE WITH BS5325:2001 THE INSTALLATION OF TEXTILE FLOOR COVERINGS - CODE OF PRACTICE

FRANKLY
AMSTERDAM

CONTRACT COLLECTION - LAY OUT



COLORS



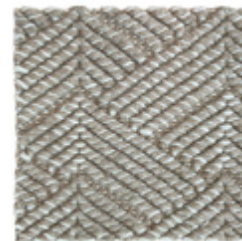
1601



1602



1603



1604

ABOUT LAY OUT

Manufacturing method	Wilton weave
Pile surface	Loop pile
Pile composition	100% Wool
Carpet thickness	± 7 mm
Fire classification	Bfl-s1
Colors	4 standard colors
Use	Indoor

Designed to elevate any space, the Lay Out rug effortlessly commands attention and adds interest to any room, merging contemporary style with practical functionality for both residential and soft contract settings.

Made in Europe, Lay Out showcases a unique geometric pattern, woven using the Wilton technique. Constructed from 100% wool, this rug offers durability, hypoallergenic properties, and temperature moderation.

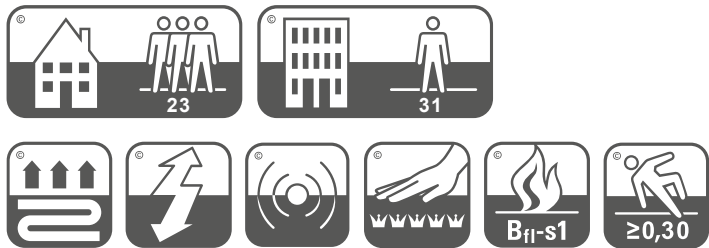
The artisan-made design showcases a perfect blend of softness and resilience, suitable as a custom-sized rug or runner. Available in four standard colors, to compliment any design scheme.

TECHNICAL INFORMATION

LAY OUT

Manufacturing method	Wilton weave
Pile surface	Loop pile
Pile composition	100% Wool
Carpet weight	± 2.700 g/m2
Carpet thickness	± 7 mm
Backing	Jute & cotton
Roll width	4 meters
Fire classification	Bfl-s1
Colors	4 standard colors
Advantages	+ available as rug and runner + suitable for heavy domestic use and soft contract + durable and hypoallergenic properties + natural backing with jute and cotton + custom shape possible
Note	Anti-slip underlayment is advised

Please note that your order will be cut from a roll of 4 meters width.
Please include the cutting loss in your order. If you need any help calculating this, we are glad to be of service.



Classification EN 1307 and EN 13501

PATTERN DIRECTION



This pattern is not on scale, this image only shows the pattern direction

FRANKLY
AMSTERDAM

CONTRACT COLLECTION - LINE UP



COLORS



1701



1702



1703



1704

ABOUT LINE UP

Manufacturing method	Wilton weave
Pile surface	Loop pile
Pile composition	100% Wool
Carpet thickness	± 7 mm
Fire classification	Bfl-s1
Colors	4 standard colors
Use	Indoor

Line Up draws inspiration from the beauty of symmetry found in every day life. This design merges contemporary style with practical functionality for both residential and soft contract use.

Made in Europe, Line Up showcases a unique geometric pattern, woven using the Wilton technique. Constructed from 100% wool, this rug offers durability, hypoallergenic properties, and temperature moderation.

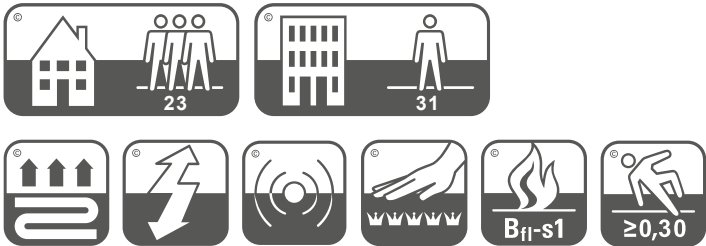
The artisan-made design showcases a perfect blend of softness and resilience, suitable as a custom-sized rug or runner. Available in four standard colors, to compliment any design scheme.

TECHNICAL INFORMATION

LINE UP

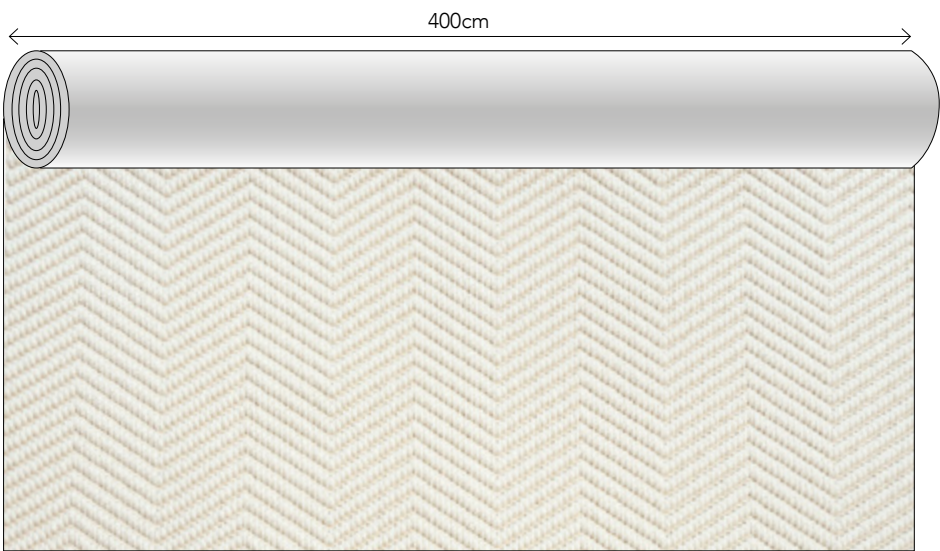
Manufacturing method	Wilton weave
Pile surface	Loop pile
Pile composition	100% Wool
Carpet weight	± 2.700 g/m2
Carpet thickness	± 7 mm
Backing	Jute & cotton
Roll width	4 meters
Fire classification	Bfl-s1
Colors	4 standard colors
Advantages	+ available as rug and runner + suitable for heavy domestic use and soft contract + durable and hypoallergenic properties + natural backing with jute and cotton + custom shape possible
Note	Anti-slip underlayment is advised

Please note that your order will be cut from a roll of 4 meters width.
Please include the cutting loss in your order. If you need any help calculating this, we are glad to be of service.



Classification EN 1307 and EN 13501

PATTERN DIRECTION



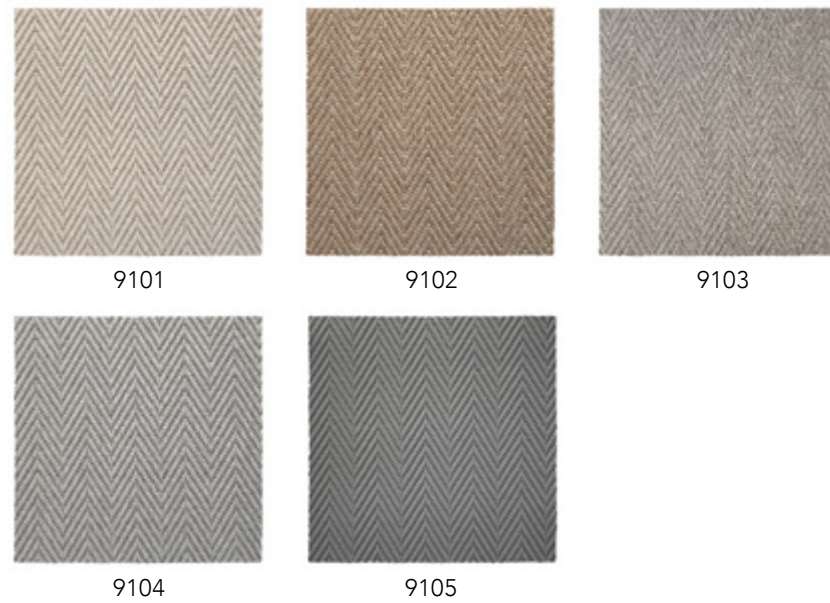
This pattern is not on scale, this image only shows the pattern direction

FRANKLY
AMSTERDAM

CONTRACT COLLECTION - NEXT STEP



COLORS



ABOUT NEXT STEP

Manufacturing method	Flatwoven
Pile surface	Loop pile
Pile composition	100% P.P.
Carpet thickness	± 5 mm
Fire classification	Cfl-s1
Colors	5 standard colors
Use	Indoor and outdoor

Next Step catches the eye through its expressive graphic features. A classic herringbone pattern that creates a statement, yet stays subtle through its natural color tones. Next step is made in the Netherlands from 100% durable, high quality P.P, and complies with the highest level of contract quality tests. This carpet can be used for residential and commercial installations.

Due to the different production dyelots, slight variation in color tone may occur. A small deviation from the sample swatches are not considered flaws.

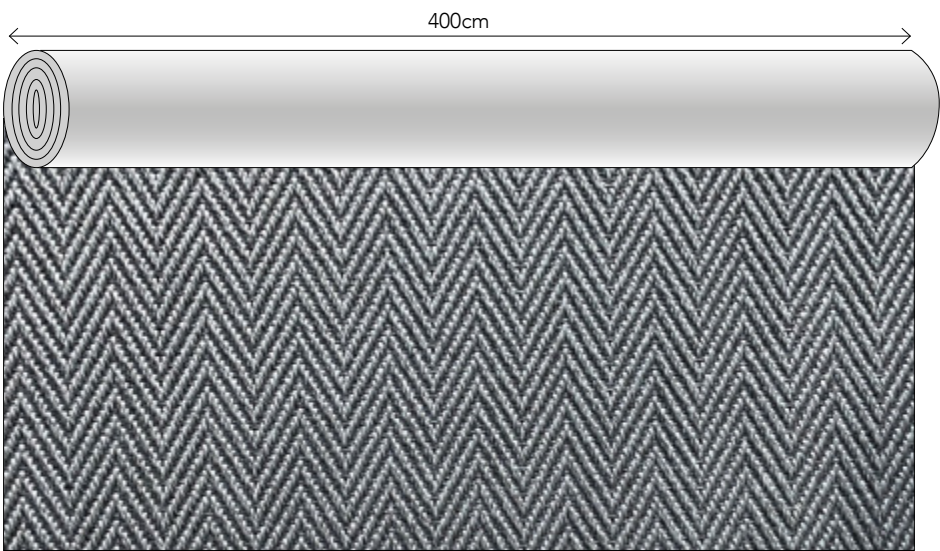
Rugs with a folded padded edge will have felted padding at the bottom, therefore they can only be used indoors and can not be used for stair runners. Please calculate a 10 cm margin around all edges for a rug with folded padded edge. Maximum rug width for this finish is 380 cm.

TECHNICAL INFORMATION

NEXT STEP

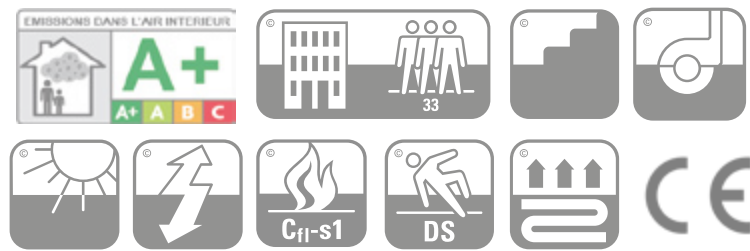
Manufacturing method	Flatwoven
Pile surface	Loop pile
Pile composition	100% P.P.
Carpet weight	± 1.900 g/m²
Carpet thickness	± 5 mm
Backing	Gel backing
Roll width	4 meters
Fire classification	Cfl-s1
Colors	5 standard
Advantages	+ suitable for indoor and outdoor use + suitable for residential and contract + available as rug, wall-to-wall carpet and stair runner + waterproof and UV proof + easy cleaning, even with bleach + castor proof

PATTERN DIRECTION



This pattern is not on scale, this image only shows the pattern direction

Please note that your order will be cut from a roll of 4 meters width.
Please include the cutting loss in your order. If you need any help
calculating this, we are glad to be of service.



Classification EN 1307 and EN 13501-1:2018

PLEASE CONSULT OUR INSTALLATION GUIDE CONTAINING IMPORTANT INFORMATION RELATIVE TO THE PLANNING & INSTALLATION OF THIS PRODUCT.

INSTALLATION GUIDE

PLANNING & INSTALLATION NEXT STEP

You are considering the purchase of a beautiful high-quality carpet, but don't forget it needs a skilled installer to ensure its beauty is lasting. The best carpet installers are highly skilled, have great knowledge, will give excellent advice and take pride in their work. Always ensure your installer works to the national code of practice for carpet installation and selects the best materials and method of carpet laying for the individual project. We believe a site visit from your installer is an essential part of the process and that they should have seen samples of the materials you intend to install.

The following information is provided in good faith and no responsibility is accepted by Frankly Amsterdam for claims arising from any proposed installation methods.

NOTES

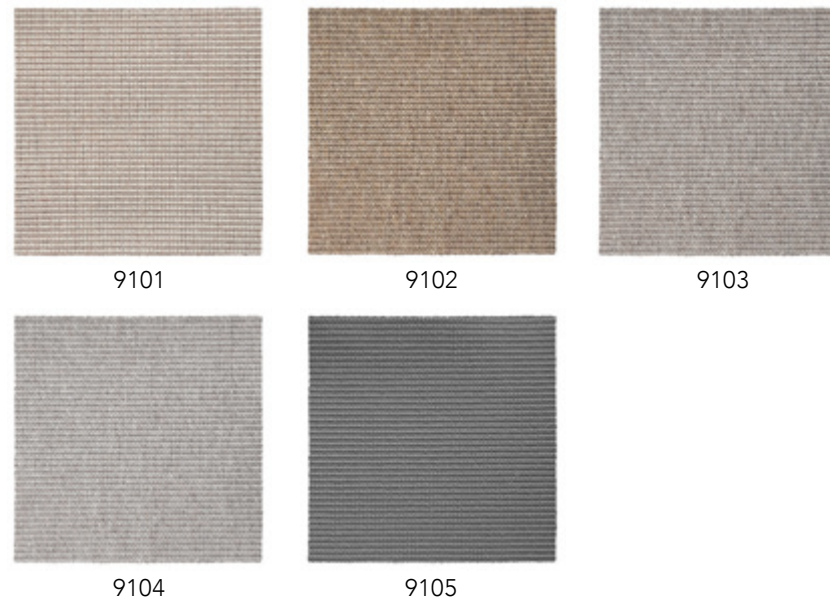
- Make sure to only fit rolls from the same batch next to each other, to avoid differences in appearance. Please consult with Frankly Amsterdam in advance about roll numbers related to different batches.
- The carpet lengths should always be fitted in the same direction within one room. We recommend fitting the carpet in all rooms or levels in one direction only, due to the clearly visible texture of flat woven carpet.
- In woven structures, where in machine direction the straight warp yarn cannot be noticed, cutting must be made exact along the pile-warp surface yarn. Never cut through the straight warp binding yarn, as this will give high risk of fraying.
- Do not cut the carpet from the back or double cut the carpet.
- Head seams can be finished with a metal binding strip. For example; head seams can be used with doorways, when carpet goes from hall areas into connecting rooms. Ensure that the seam is directly underneath the door leaf. The head seam must be covered with a metal binding strip.
- Where edges are cut to create a seam, the cut edges must be sealed using a proprietary seam sealant. The sealant must be allowed sufficient time to dry before forming the seam.
- Rubber underlayment is recommended for all wall-to-wall installations and area rugs.

FRANKLY
AMSTERDAM

CONTRACT COLLECTION - NO DOUBT



COLORS



ABOUT NO DOUBT

Manufacturing method	Flatwoven
Pile surface	Loop pile
Pile composition	100% P.P.
Carpet thickness	± 5 mm
Fire classification	Dfl-s1
Colors	5 standard colors
Use	Indoor and outdoor

A flat woven carpet that brings confidence into any space. No Doubt is characterized by its strong personality: a carpet that defines the space while preserving harmony at the same time. No Doubt is made in the Netherlands from 100% P.P. and complies with high level contract quality tests. Its water and UV-resistance makes it perfect for both indoor and outdoor applications, and it's suitable for residential and commercial installations.

Due to the different production dyelots, slight variation in color tone may occur. A small deviation from the sample swatches are not considered flaws.

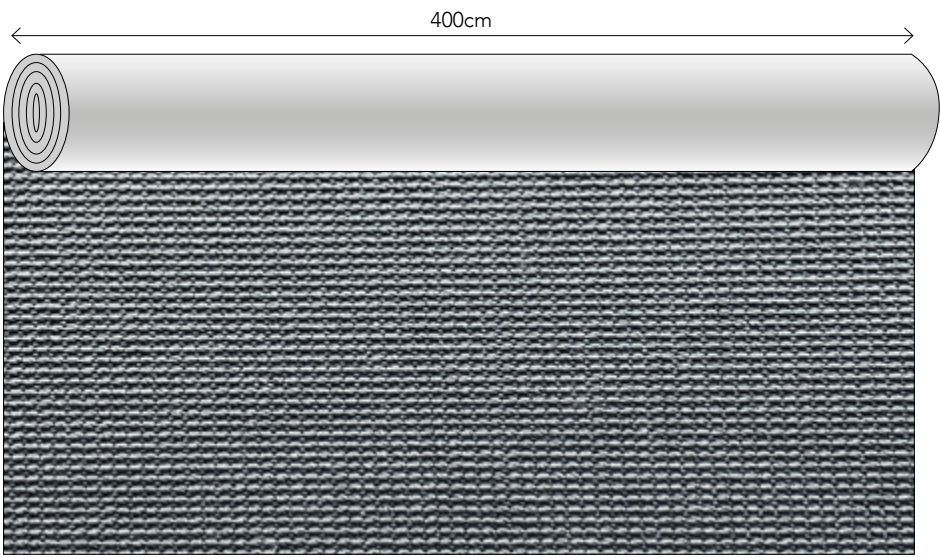
Rugs with a folded padded edge will have felted padding at the bottom, therefor they can only be used indoors and can not be used for stair runners. Please calculate a 10 cm margin around all edges for a rug with folded padded edge. Maximum rug width for this finish is 380 cm.

TECHNICAL INFORMATION

NO DOUBT

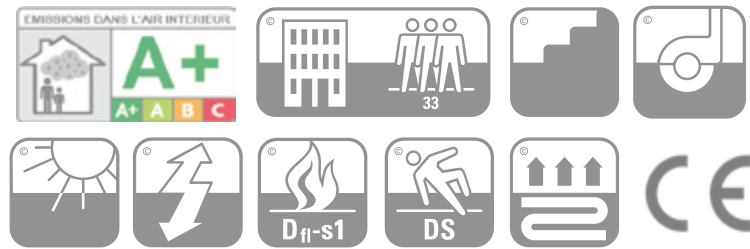
Manufacturing method	Flatwoven
Pile surface	Loop pile
Pile composition	100% P.P.
Carpet weight	± 1.950 g/m²
Carpet thickness	± 5 mm
Backing	Gel backing
Roll width	4 meters
Fire classification	Dfl-s1
Colors	5 standard
Advantages	+ suitable for indoor and outdoor use + suitable for residential and contract + available as rug, wall-to-wall carpet and stair runner + waterproof and UV proof + easy cleaning, even with bleach + castor proof

PATTERN DIRECTION



This pattern is not on scale, this image only shows the pattern direction

Please note that your order will be cut from a roll of 4 meters width.
Please include the cutting loss in your order. If you need any help
calculating this, we are glad to be of service.



Classification EN 1307 and EN 13501-1:2018

PLEASE CONSULT OUR INSTALLATION GUIDE CONTAINING IMPORTANT INFORMATION RELATIVE TO THE PLANNING & INSTALLATION OF THIS PRODUCT.

INSTALLATION GUIDE

PLANNING & INSTALLATION NO DOUBT

You are considering the purchase of a beautiful high-quality carpet, but don't forget it needs a skilled installer to ensure its beauty is lasting. The best carpet installers are highly skilled, have great knowledge, will give excellent advice and take pride in their work. Always ensure your installer works to the national code of practice for carpet installation and selects the best materials and method of carpet laying for the individual project. We believe a site visit from your installer is an essential part of the process and that they should have seen samples of the materials you intend to install.

The following information is provided in good faith and no responsibility is accepted by Frankly Amsterdam for claims arising from any proposed installation methods.

NOTES

- Make sure to only fit rolls from the same batch next to each other, to avoid differences in appearance. Please consult with Frankly Amsterdam in advance about roll numbers related to different batches.
- The carpet lengths should always be fitted in the same direction within one room. We recommend fitting the carpet in all rooms or levels in one direction only, due to the clearly visible texture of flat woven carpet.
- In woven structures, where in machine direction the straight warp yarn cannot be noticed, cutting must be made exact along the pile-warp surface yarn. Never cut through the straight warp binding yarn, as this will give high risk of fraying.
- Do not cut the carpet from the back or double cut the carpet.
- Head seams can be finished with a metal binding strip. For example; head seams can be used with doorways, when carpet goes from hall areas into connecting rooms. Ensure that the seam is directly underneath the door leaf. The head seam must be covered with a metal binding strip.
- Where edges are cut to create a seam, the cut edges must be sealed using a proprietary seam sealant. The sealant must be allowed sufficient time to dry before forming the seam.
- Rubber underlayment is recommended for all wall-to-wall installations and area rugs.

FRANKLY
AMSTERDAM

CONTRACT COLLECTION - ON RETURN



COLORS



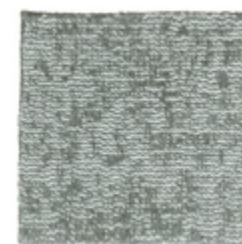
6001



6002



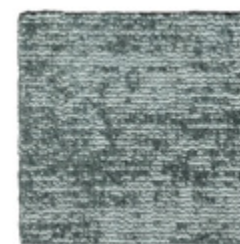
6003



6004



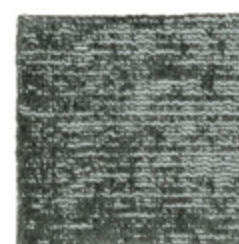
6005



6006



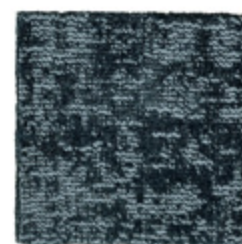
6007



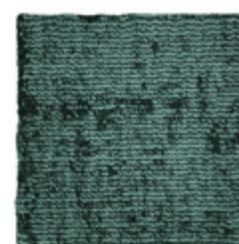
6008



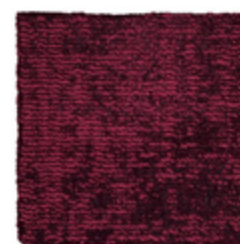
6009



6010



6011



6012

ABOUT ON RETURN

Manufacturing method	Machine woven
Pile surface	Tip-shear
Pile composition	100% recycled plastic
Pile height	± 9,0 mm
Carpet thickness	± 11,0 mm
Fire classification	Cfl-s1
Colors	12 standard colors, custom colors available on request from 200 m²

This carpet is eco-friendly by using recycled nylon, made from plastic waste recovered from the world's oceans and marine industries. Woven in a loop pile with tip-shear the textured surface gives a random look of cut & loop yarns. The carpet is soft to the touch and due to the superior durability suited for soft commercial applications such as hotel rooms or executive offices.

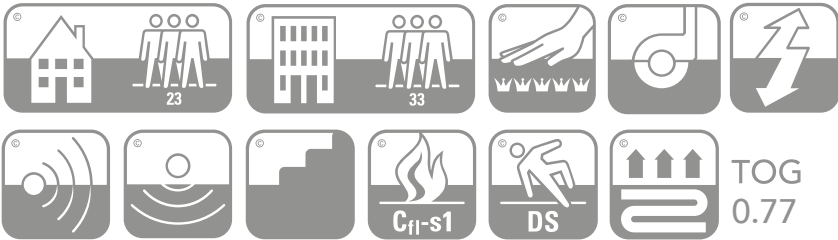
Due to the nature of the shaving process, patterns in cut-loop pile qualities will appear irregular. Each rug is individually unique, with no two pieces exactly alike.

TECHNICAL INFORMATION

ON RETURN

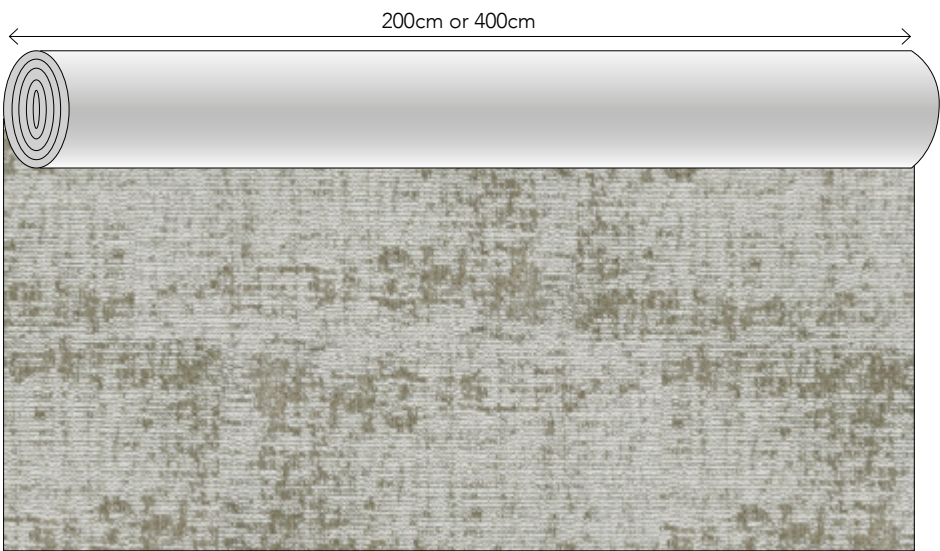
Manufacturing method	Machine woven
Pile surface	Tip-shear
Pile composition	100% recycled plastic
Pile weight	± 1.900 g/m ²
Carpet weight	± 2.800 g/m ²
Pile height	± 9,0 mm
Carpet thickness	± 11,0 mm
Backing	Jute & latex
Roll width	2 or 4 meters
Fire classification	Cfl-s1
Colors	12 standard colors, custom colors available on request
Advantages	+ suitable for residential as well as contract + made from regenerated nylon + environmentally friendly & sustainable + long-lasting & fire retardent + castor proof

Please note that your order will be cut from a roll of 2 meters or 4 meters width. Please include the cutting loss in your order. If you need any help calculating this, we are glad to be of service.



Classification EN 1307:2014 and EN 14041:2004

PATTERN DIRECTION



This pattern is not on scale, this image only shows the pattern direction

PLEASE CONSULT OUR INSTALLATION GUIDE CONTAINING IMPORTANT INFORMATION RELATIVE TO THE PLANNING & INSTALLATION OF THIS PRODUCT.

INSTALLATION GUIDE

PLANNING & INSTALLATION ON RETURN

You are considering the purchase of a beautiful high-quality carpet, but don’t forget it needs a skilled installer to ensure its beauty is lasting. The best carpet installers are highly skilled, have great knowledge, will give excellent advice and take pride in their work. Always ensure your installer works to the national code of practice for carpet installation and selects the best materials and method of carpet laying for the individual project. We believe a site visit from your installer is an essential part of the process and that they should have seen samples of the materials you intend to install.

The following information is provided in good faith and no responsibility is accepted by Frankly Amsterdam for claims arising from any proposed installation methods.

PHASE	OPERATION/DESCRIPTION	STRETCH FITTING METHOD	DOUBLE-STICK FITTING METHOD
1) Project Planning	1.1) Seaming/joining (Note 1) 1.2) Multi width seaming (Note 2)	Side-to-side only No manufacturers selvedge	Side-to-side only No manufacturers selvedge
2) On site Preparation	2.1) Perimeter Gripper Type (Note 3) 2.2) Gripper Banking 2.3) Gripper Position (From Perimeter of room)	Short Pin Length Double row (Note 4) 6mm	Short Pin Length Single (Note 5) 6mm
3) Carpet Preparation	3.1) Carpet/Seam Cutting (Note 6) 3.2) Seam Sealing (cut edges) (Note 7) 3.3) Seaming Method (Note 8)	Back Cut Seam edges must be sealed Electrically activated/Heat Seamed	Back Cut Seam edges must be sealed N/A

NOTES

- GENERAL NOTES: Due to the manufacturing process of the ‘On Return’ series no two pieces of carpet will be the same and therefore there is no possible pattern repeat or pattern register. This will result in visual variations to all seams and are random.
- NOTE 1: The carpet is only recommended for side to side joining. End to side or end to end joins are not recommended in this carpet.
- NOTE 2: The ‘On Return’ series is manufactured with an open selvedge that must be trimmed back for seaming. Attention must be paid in both planning and seam execution, to the weave structure on the edges of the carpet body, to ensure a consistent seam is achieved. Upon receipt of the carpet we recommend close inspection of both edges, as it will be necessary to cut back into the body of the carpet to achieve a uniform join, which is consistent on both sides of the seam. We do not recommend that this carpet is cut through the last line of the protective open selvedge and butt joined.
- NOTE 3: This carpet should only be fitted on short pin length gripper.
- NOTE 4: With this carpet structure, a double row of regular width gripper will allow the carpet to be stretched to the required tension.
- NOTE 5: In double stick installations, perimeter gripper must be used.
- NOTE 6: This carpet can only be cut from the back. Using a sharp knife, cut cleanly along the line of the warpwise row. Care must be taken to cut a straight.
- NOTE 7: Where edges are cut to create a seam, the cut edges must be sealed using a proprietary seam sealant. The sealant must be allowed sufficient time to dry before forming the seam.
- NOTE 8: We recommend the use of a quality seaming tape. Where possible the use of an electrically activated seaming tape (Silvaseam) is recommended as this allows greater control in the formation of the seam.

ALL INSTALLATION MUST BE CARRIED OUT IN ACCORDANCE WITH BS5325:2001 THE INSTALLATION OF TEXTILE FLOOR COVERINGS - CODE OF PRACTICE

CARE INSTRUCTIONS

To extend the life of your carpet and maintain its appearance, regular care and proper cleaning techniques are key.

PREVENTIVE MEASURES

- Start by preventing dirt from entering your carpet. Place walk-off mats at all external doorways to catch dirt, moisture, and grease, reducing up to 80% of soil that could otherwise soil your carpet. Make sure mats are big enough for at least two footsteps, and replace or clean them regularly. Also, change filters in air conditioning and heating systems to reduce airborne dirt.

REGULAR MAINTENANCE

VACUUMING

- Frequent vacuuming is crucial to remove loose soil and prevent embedded dirt from damaging the carpet fibers. Lightly used carpets should be vacuumed weekly, but in areas with heavy traffic, daily vacuuming may be necessary. Use a vacuum appropriate for your carpet type, ensuring it's in good condition, and remember to clean or replace filters regularly.

RECOMMENDED VACUUMING PRACTICES

- Start vacuuming right after the carpet is laid to remove any dust from installation.
- For loop-pile carpets, always use a suction-only vacuum to avoid damage.
- Regularly vary the starting point of vacuuming to prevent wear patterns.
- Always keep the vacuum bag or cylinder less than half full.

CLEANING

- While regular vacuuming and quick stain removal can reduce the need for deep cleaning, sometimes the carpet will need professional attention. For best results, always choose a Woolsafe® recommended cleaning agent. After any deep cleaning, ensure the carpet is fully dry before walking on it to prevent re-soiling.

CLEANING KIT

- A basic first aid kit for carpet stains is a great idea. It should include a spatula, diluted shampoo for water-based stains, a solvent for oily stains, chewing gum remover, wet vacuum, clean cloths, a soft brush, and access to water.

STAIN AND SPILLAGE REMOVAL

When spills happen, quick action is essential to avoid stains setting in. Whether it's food, drink, or greasy substances, the sooner you treat the spill, the easier it is to clean. Always blot stains (don't rub) and work from the outer edge to the center to prevent spreading. Use appropriate cleaning agents for specific stains—whether water-based or oily—and always rinse after treatment.

SPECIAL CONSIDERATIONS FOR HIGH-TRAFFIC AREAS

For areas with heavy traffic, like ramps and elevator cars, rubber wheel marks can form from wheelchairs, trolleys, or luggage. These can become sticky, attracting soil. To remove these marks, use a Woolsafe® approved solvent and rinse thoroughly to avoid attracting more dirt.

INTERIM CLEANING

If regular vacuuming doesn't keep your carpet looking fresh, consider interim cleaning methods such as low-moisture extraction or shampooing. This can help lift dirt and restore the carpet's appearance between deep cleanings.

DEEP CLEANING - HOT WATER EXTRACTION

Eventually, carpets will need deep cleaning to remove settled dirt and refresh the fibers. Hot water extraction is one of the best methods for this. The process uses pressurized jets of warm water mixed with a cleaning solution to deep clean and extract soil. It's important to only use warm water (not hot) on wool carpets to avoid shrinkage.

HELPFUL MAINTENANCE TIPS

- Regularly inspect carpet areas for early signs of damage.
- Ensure that barrier mats are cleaned as per the manufacturer's recommendations.
- Use only compatible cleaning products to avoid damaging the fibers.
- When moving furniture with wheels, protect the carpet to prevent wear.
- Ensure good ventilation when using cleaning products.

DISCLAIMER

Moquetas Rols provides this guide in good faith, but we cannot accept responsibility for claims related to post-installation maintenance. Always follow proper cleaning procedures to ensure your carpet remains in top condition.

ALL INSTALLATION MUST BE CARRIED OUT IN ACCORDANCE WITH BS5325:2001 THE INSTALLATION OF TEXTILE FLOOR COVERINGS - CODE OF PRACTICE

FRANKLY
AMSTERDAM

CONTRACT COLLECTION - OUT LINE



COLORS



1801



1802



1803



1804

ABOUT OUT LINE

Manufacturing method	Wilton weave
Pile surface	Loop pile
Pile composition	100% Wool
Carpet thickness	± 7 mm
Fire classification	Bfl-s1
Colors	4 standard colors
Use	Indoor

Designed to make a statement in any space with its captivating and intricate pattern, this design merges contemporary style with practical functionality for both residential and soft contract settings.

Made in Europe, Out Line showcases a unique geometric pattern, woven using the Wilton technique. Constructed from 100% wool, this rug offers durability, hypoallergenic properties, and temperature moderation.

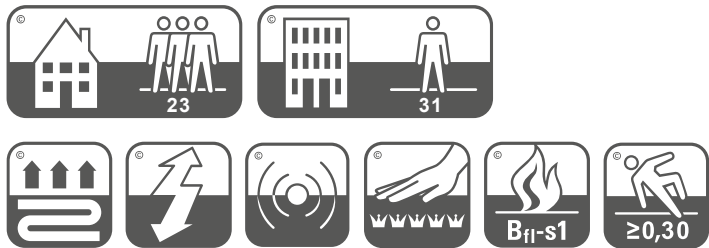
The artisan-made design showcases a perfect blend of softness and resilience, suitable as a custom-sized rug or runner. Available in four standard colors, to compliment any design scheme.

TECHNICAL INFORMATION

OUT LINE

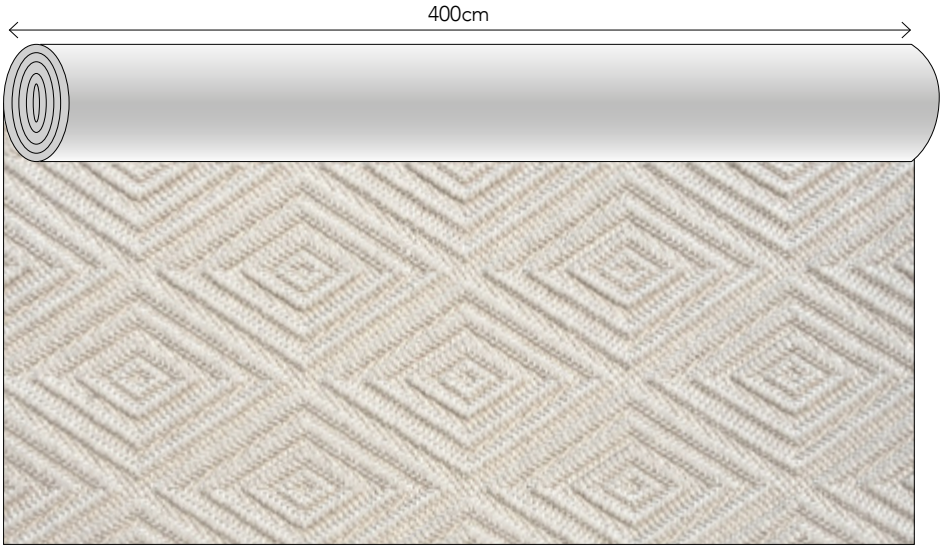
Manufacturing method	Wilton weave
Pile surface	Loop pile
Pile composition	100% Wool
Carpet weight	± 2.700 g/m2
Carpet thickness	± 7 mm
Backing	Jute & cotton
Roll width	4 meters
Fire classification	Bfl-s1
Colors	4 standard colors
Advantages	+ available as rug and runner + suitable for heavy domestic use and soft contract + durable and hypoallergenic properties + natural backing with jute and cotton + custom shape possible
Note	Anti-slip underlayment is advised

Please note that your order will be cut from a roll of 4 meters width.
Please include the cutting loss in your order. If you need any help calculating this, we are glad to be of service.



Classification EN 1307 and EN 13501

PATTERN DIRECTION



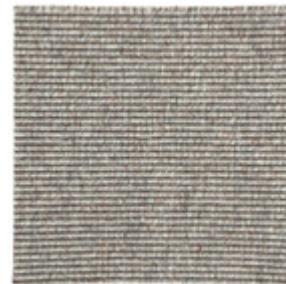
This pattern is not on scale, this image only shows the pattern direction

FRANKLY
AMSTERDAM

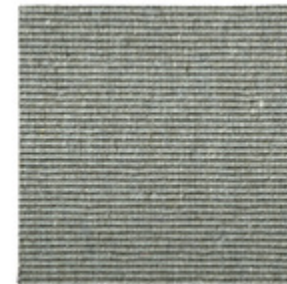
CONTRACT COLLECTION - ROLL OVER



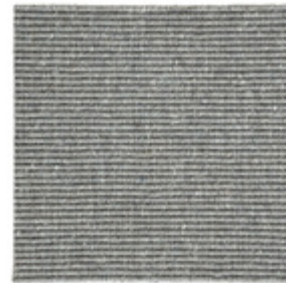
COLORS



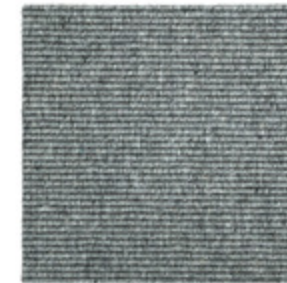
6101



6102



6103



6104



6105



6106

ABOUT ROLL OVER

Manufacturing method	Machine woven
Pile surface	Loop Pile
Pile composition	100% Wool
Pile height	± 3,0 mm
Carpet thickness	± 4,0 mm
Fire classification	Bfl-s1
Colors	6 standard colors

A flatwoven carpet with timeless simplicity. Made from a blend of natural wool fibre, this carpet is engineered to perform in the most demanding residential and commercial applications.

Due to the characteristics of the natural materials used in this carpet, slight variation in color tone may occur. A small deviation from the sample swatches are not considered flaws.

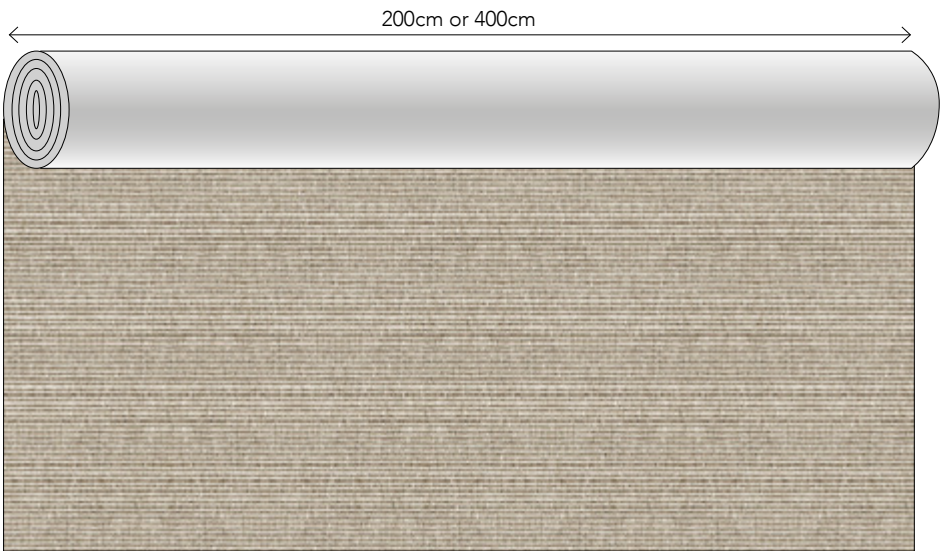
TECHNICAL INFORMATION

ROLL OVER

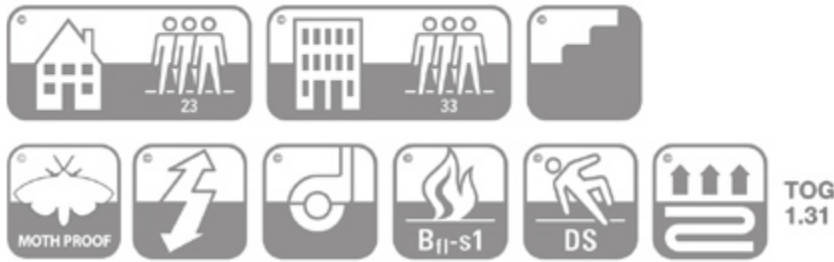
Manufacturing method	Machine woven
Pile surface	Loop Pile
Pile composition	100% Wool
Pile weight	± 1.060 g/m ²
Carpet weight	± 2.000 g/m ²
Pile height	± 3,0 mm
Carpet thickness	± 4,0 mm
Backing	P.P. & Latex
Roll width	2 or 4 meters
Fire classification	Bfl-s1
Colors	6 standard colors
Advantages	+ suitable for residential as well as contract + long-lasting & fire retardent + available as stair runner + castor proof + VOC-emission label A+

Please note that your order will be cut from a roll of 2 meters or 4 meters width. Please include the cutting loss in your order. If you need any help calculating this, we are glad to be of service.

PATTERN DIRECTION



This pattern is not on scale, this image only shows the pattern direction



Classification EN 1307:2014 and EN 14041:2004
This product fulfills the requirements for LEED certified buildings (EQC 4.3)

PLEASE CONSULT OUR INSTALLATION GUIDE CONTAINING IMPORTANT INFORMATION RELATIVE TO THE PLANNING & INSTALLATION OF THIS PRODUCT.

INSTALLATION GUIDE

PLANNING & INSTALLATION ROLL OVER

You are considering the purchase of a beautiful high-quality carpet, but don’t forget it needs a skilled installer to ensure its beauty is lasting. The best carpet installers are highly skilled, have great knowledge, will give excellent advice and take pride in their work. Always ensure your installer works to the national code of practice for carpet installation and selects the best materials and method of carpet laying for the individual project. We believe a site visit from your installer is an essential part of the process and that they should have seen samples of the materials you intend to install.

The following information is provided in good faith and no responsibility is accepted by Frankly Amsterdam for claims arising from any proposed installation methods.

PHASE	OPERATION/DESCRIPTION	DOUBLE-STICK FITTING METHOD (Note 2)
1) Project Planning	1.1) Seaming/joining (Note 1) 1.2) Multi width seaming (Note 3)	Side-to-side only No manufacturers selvedge
2) On site Preparation	2.1) Perimeter Gripper Type (Note 4) 2.2) Gripper BankingSingle (Note 5) 2.3) Gripper Position (From Perimeter of room)	Short Pin Length Single (Note 5) 3mm
3) Carpet Preparation	3.1) Carpet/Seam Cutting (Note 6) 3.2) Seam Sealing (cut edges) (Note 7) 3.3) Seaming Method (Note 8)	Back Cut Seam edges must be sealed N/A

Rubber underlayment is recommended for all wall-to-wall installations and area rugs.

NOTES

- NOTE 1: The carpet is only recommended for side to side joining. End to side or end to end joins are not recommended in this carpet.
- NOTE 2: We do not recommend this carpet be stretch fitted. Carpet should be fully bonded to prepared sub floors, or installed using the Double-Stick method.
- NOTE 3: The ‘Roll Over’ series is manufactured with an open selvedge that must be trimmed back for seaming. Attention must be paid in both planning and seam execution, to the pattern match and weave structure on the edges of the carpet body, to ensure a consistent seam is achieved. Upon receipt of the carpet we recommend close inspection of both edges, as it will be necessary to cut back into the body of the car pet to achieve a uniform join and pattern match, which is consistent on both sides of the seam. We do not recommend that this carpet is cut through the last line of the protective open selvedge and butt joined.
- NOTE 4: This carpet should only be fitted on short pin length Blank Gripper.
- NOTE 5: Double stick installations will require the use of Blank Gripper which should be positioned 3 mm from the perimeter walls or skirting.
- NOTE 6: This carpet can only be cut from the back. Using a sharp knife, cut cleanly along the line of the warpwise row. Care must be taken to cut a straight line within the individual row and not to transgress to the rows on either side of the the cut line.
- NOTE 7: Where edges are cut to create a seam, the cut edges must be sealed using a proprietary seam sealant. The sealant must be allowed sufficient time to dry before forming the seam. Darker colours will offer a better visual seam as they will disguise better with the backing.
- NOTE 8: We recommend the use of a quality seaming tape. Where possible the use of an electrically activated seaming tape (Silvaseam) is recommended as this allows greater control in the formation of the seam

ALL INSTALLATION MUST BE CARRIED OUT IN ACCORDANCE WITH BS5325:2001 THE INSTALLATION OF TEXTILE FLOOR COVERINGS - CODE OF PRACTICE

CARE INSTRUCTIONS

PREVENTIVE MEASURES

- Walk-off Mats: Install mats at external doorways to capture up to 80% of dirt before it contacts the carpet.
- Regular Maintenance of Air Systems: Clean or replace filters in HVAC systems to reduce airborne soil particles.

REGULAR MAINTENANCE

VACUUMING

- Frequent vacuuming is essential for reducing the buildup of loose soil particles that can cause premature wear. For areas with light use, vacuuming once a week is typically sufficient. In high-traffic areas, including commercial applications, daily vacuuming is recommended to maintain the carpet's appearance and longevity. Always vacuum before and after other cleaning processes. Make sure to keep the vacuum's bag or cylinder less than half full and replace filters 3-4 times per year, or more in high-use environments.

VACUUMING PROCEDURES

- Start vacuuming soon after installation to remove residual dust.
- Use suction-only vacuum machines for loop pile carpets.
- Regularly vacuum large areas using overlapping strokes.
- Keep vacuum bags or cylinders half full and change filters 3-4 times a year.

CLEANING

- For light cleaning, regular vacuuming and prompt attention to spills might be enough. For deep cleaning, employ a professional cleaner using high-quality, preferably Woollsafe®-recommended, agents.

CLEANING KIT

- Maintain a kit for quick responses to spills. Items include spatulas, stain removers, wet vacuums, clean cloths, and a soft-bristle brush.

SPILLAGES AND STAIN REMOVAL

Promptly clean any spills to prevent stains.

- **Stain Removal Tips:**
- Work from the outer edge of the stain towards the center.
- Blot stains, don't rub, to avoid pile distortion.
- Rinse water-based treatments thoroughly to prevent re-soiling.
- **Common Stains:**
- Oil/Grease stains: Use a solvent-based cleaner for greasy marks.
- Water-based Stains: For tea, coffee, juice, or blood, follow specific procedures using the right cleaning products.
- Chewing Gum: Freeze and remove with a gel-type solvent.

STAIN REMOVAL STEPS

- Remove solids with a blunt instrument and vacuum loose powders.
- For wet stains, use a wet vacuum or blot with a white cloth.
- Always test any cleaning product in an inconspicuous area before full use.

CONTRACT-RELATED CLEANING

- For high-traffic areas like ramps or lift cars, rubber wheel marks can form. These marks can attract soil and become sticky if not treated. Use Woollsafe®-approved gel solvents to clean them.

INTERIM CLEANING METHOD (LOW MOISTURE SOIL EXTRACTION)

- A low-moisture system that uses a cleaning solution fed into a rotary brush to clean and lift the pile. The vacuum extracts moisture and soil.

DEEP CLEANING (HOT WATER EXTRACTION)

- Hot water extraction flushes debris from the carpet pile. For wool carpets, warm water is recommended.
- **Operating Procedures for Deep Cleaning:**
- Pre-vacuum the area thoroughly before starting.
- Use a pre-spray solution and rinse with a fibre conditioner to avoid soil attraction.

KEY POINTS FOR HOT WATER EXTRACTION

- Only trained professionals should perform deep cleaning.
- Use low-residue solutions and avoid over-wetting the carpet to prevent shrinkage.
- Ensure proper ventilation for faster drying.

DISCLAIMER

- Moquetas Rols provides this guide in good faith but does not accept responsibility for claims related to post-installation maintenance treatments.

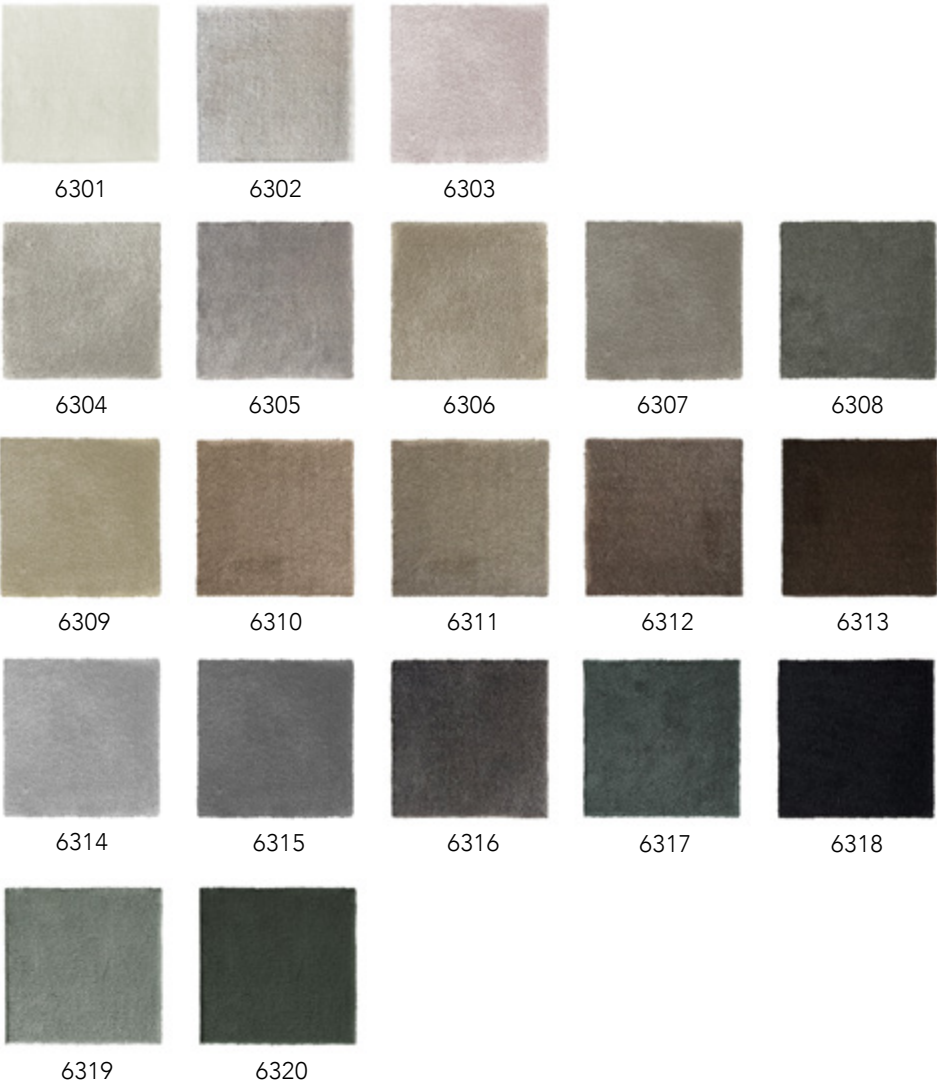
ALL INSTALLATION MUST BE CARRIED OUT IN ACCORDANCE WITH BS5325:2001 THE INSTALLATION OF TEXTILE FLOOR COVERINGS - CODE OF PRACTICE

FRANKLY
AMSTERDAM

CONTRACT COLLECTION - STEP UP 9



COLORS



ABOUT STEP UP 9

Manufacturing method	Machine knitted
Pile surface	Cut Pile
Pile composition	100% Pure New Wool
Pile height	± 7,2 mm
Carpet thickness	± 9,2 mm
Fire classification	Bfl-s1
Colors	20 standard colors, custom colors available on request from 200 m²

This sophisticated velvet structure carpet uses high quality 100% pure new wool has a cut pile with a flawless surface finish. Suitable for residential and commercial installations. The 20 standard colors include delicate neutrals, mid tones and strong dark hues. Custom colours can be ordered for a minimum of 200 m².

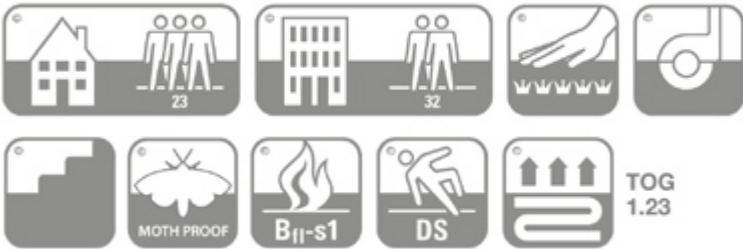
Due to the characteristics of the natural materials used in this carpet, slight variation in color tone may occur. A small deviation from the sample swatches are not considered flaws.

TECHNICAL INFORMATION

STEP UP 9

Manufacturing method	Machine knitted
Pile surface	Cut Pile
Pile composition	100% Pure New Wool
Pile weight	± 1.350 g/m ²
Carpet weight	± 2.850 g/m ²
Pile height	± 7,2 mm
Carpet thickness	± 9,2 mm
Backing	Action Back P.P.
Roll width	2 or 4 meters
Fire classification	Bfl-s1
Colors	20 standard colors, custom colors available on request
Advantages	+ suitable for residential as well as contract + available as stair runner + long-lasting & fire retardent + VOC-emission label A+ + castor proof

Please note that your order will be cut from a roll of 2 meters or 4 meters width. Please include the cutting loss in your order. If you need any help calculating this, we are glad to be of service.



Classification EN 1307:2014 and EN 14041:2004

This product fulfills the requirements for LEED certified buildings (EQC 4.3)

PLEASE CONSULT OUR INSTALLATION GUIDE CONTAINING IMPORTANT INFORMATION RELATIVE TO THE PLANNING & INSTALLATION OF THIS PRODUCT.

INSTALLATION GUIDE

PLANNING & INSTALLATION STEP UP 9

You are considering the purchase of a beautiful high-quality carpet, but don't forget it needs a skilled installer to ensure its beauty is lasting. The best carpet installers are highly skilled, have great knowledge, will give excellent advice and take pride in their work. Always ensure your installer works to the national code of practice for carpet installation and selects the best materials and method of carpet laying for the individual project. We believe a site visit from your installer is an essential part of the process and that they should have seen samples of the materials you intend to install.

The following information is provided in good faith and no responsibility is accepted by Frankly Amsterdam for claims arising from any proposed installation methods.

PHASE	OPERATION/DESCRIPTION	STRETCH FITTING METHOD	DOUBLE-STICK FITTING METHOD
1) Project Planning	1.1) Seaming/joining (Note 1) 1.2) Multi width seaming (Note 2)	Side-to-side only From same manufacturing face	Side-to-side only From same manufacturing face
2) On site Preparation	2.1) Perimeter Gripper Type (Note 3) 2.2) Gripper Banking 2.3) Gripper Position (From Perimeter of room)	Medium Pin Length Double row/Architectural (Note 4) 7mm	Medium Pin Length Single (Note 5) 7mm
3) Carpet Preparation	3.1) Carpet/Seam Cutting (Note 6) 3.2) Seam Sealing (cut edges) (Note 7) 3.3) Seaming Method (Note 8)	Face Cut (Through Pile) Seam edges must be sealed Electrically activated/Heat Seamed	Face Cut (Through Pile) Seam edges must be sealed N/A

NOTES

- NOTE 1: The carpet is only recommended for side to side joining. End to side or end to end joins are not recommended in this carpet.
- NOTE 2: The 'Step Up 9' series is produced on a face to face manufacturing system and care must be taken in planning to ensure that multi width installations are only planned and cut from one face of carpet
- NOTE 3: This carpet is best fitted on a medium pin length gripper.
- NOTE 4: With this carpet structure, a double row of regular width gripper or a single row of wide width architectural gripper will allow the carpet to be stretched to the required tension.
- NOTE 5: In double stick installations, perimeter gripper must be used.
- NOTE 6: This carpet must be cut through the face. Before cutting the carpet, use a pointed tool (bradawl, awl or similar tool) to separate the pile surface and create a straight line cutting mark in the pile by following though along the weave structure. Using a sharp seam cutter, follow the cut mark created in the pile, taking care not to cut across the lines of the weave structure.
- NOTE 7: Where edges are cut to create a seam, the cut edges must be sealed using a proprietary seam sealant. The sealant must be allowed sufficient time to dry.
- NOTE 8: We recommend the use of a quality seaming tape. Where possible the use of an electrically activated seaming tape (Silvaseam) is recommended as this allows greater control in the formation of the seam.

ALL INSTALLATION MUST BE CARRIED OUT IN ACCORDANCE WITH BS5325:2001 THE INSTALLATION OF TEXTILE FLOOR COVERINGS - CODE OF PRACTICE

CARE INSTRUCTIONS

PREVENTIVE MEASURES

The best way to keep your carpet in good condition is to prevent dirt from entering in the first place. Install doormats at entryways. This will reduce the amount of dirt and dust coming inside. By placing mats where dirt, grease, or moisture are often tracked, you can stop up to 80% of contaminants at the door. Ensure the mats are large enough for people to take at least two steps on them. Regularly replace or clean these mats to maintain their effectiveness.

Additionally, regularly replacing filters in your heating and air conditioning systems helps reduce airborne dust particles.

REGULAR MAINTENANCE

VACUUMING

Vacuuming is one of the most important tasks for maintaining your carpet. Regularly removing loose dirt prevents it from embedding into the fibers, causing wear and making the carpet look worn out faster. In less trafficked areas, weekly vacuuming might be sufficient, but in high-traffic zones, daily vacuuming is recommended.

VACUUMING TIPS

- Start vacuuming immediately after the carpet is laid to remove any leftover construction dust.
- Always vacuum before and after deep cleaning methods like steam cleaning.
- Vacuum large spaces in long strokes, overlapping slightly for full coverage.
- Try starting in a different place each time to prevent wear in one direction.
- Empty the vacuum bag or canister regularly (no more than half full) to maintain optimal performance.

TYPES OF VACUUMS

- Dual-motor vacuum (recommended for cut pile carpets): These are ideal for cleaning the surface of the carpet and restoring the appearance of the fibers. Avoid using these vacuums on loop pile carpets, as the rotating brush can damage the fibers.

CLEANING

If your carpet is well-maintained with regular vacuuming and quick treatment of stains, it might not need deep cleaning frequently. However, when the carpet becomes visibly dirty, it's advisable to have it professionally cleaned for a thorough refresh.

DEEP CLEANING

- Always use high-quality cleaning products, preferably those recommended by Woolsafe®.
- Make sure the carpet is completely dry before using it again, as this prevents it from getting dirty faster.

STAINS AND STAIN REMOVAL

Acting quickly when stains occur will prevent them from embedding deeply into the fibers. Particularly in eating or drinking areas, it's important to tackle stains right away, as some foods and drinks contain colorants that are difficult to remove. Oils and sugars in some products can make stains sticky and spread.

STEPS FOR REMOVING STAINS

- Always work from the edge of the stain toward the center and gently blot with a clean cloth. Scrubbing can damage the carpet and spread the stain.
- Avoid using harsh chemicals, and don't over-wet the carpet.
- If the stain persists after treatment, seek a professional cleaner.

HELPFUL TIPS

- Keep a "first aid" cleaning kit with the following items: a spatula (for dry stains), a diluted shampoo solution, oil or grease stain removers, gum remover, white cloths, a soft brush, and access to water.
- For gum: use a freeze-spray to harden the gum, making it easier to break off and remove.

VACUUM CLEANER MAINTENANCE

A well-maintained vacuum performs better and extends the life of your carpet. Follow these tips:

- Regularly remove hair or other blockages that may wrap around the brush rollers.
- Check the brushes and belts, and replace them if needed.
- Replace filters 3-4 times a year, or more often in high-traffic areas.
- Ensure the vacuum brushes are set at the correct height: not too low (which puts too much strain on the motor) and not too high (which reduces cleaning efficiency).

DEEP CLEANING

- For intensive cleaning, like steam cleaning, dirt particles are washed out deeply from the fibers. This is especially needed when the carpet has become dull with use over time. For wool carpets, it's important to use lukewarm water instead of hot water to prevent shrinkage.

DEEP CLEANING PROCEDURE

- Start by vacuuming the carpet thoroughly.
- Use a suitable cleaning solution (like a pre-spray) and ensure the carpet doesn't get too wet to prevent shrinkage or damage to the seams.
- After the treatment, the carpet should be completely dry before being used again. This usually takes around 4 hours, depending on the environment.

GENERAL MAINTENANCE TIPS

- Regularly inspect all parts of the carpet to catch potential issues early.
- Always use cleaning products that are suitable for the type of carpet you have.
- Always place protective material between wheeled furniture and the carpet to prevent wear.
- Ensure good ventilation when using cleaning products.
- Avoid leaving the carpet wet for extended periods, as this can cause damage.

ALL INSTALLATION MUST BE CARRIED OUT IN ACCORDANCE WITH BS5325:2001 THE INSTALLATION OF TEXTILE FLOOR COVERINGS - CODE OF PRACTICE

FRANKLY
AMSTERDAM

CONTRACT COLLECTION - STEP UP 16



COLORS



ABOUT STEP UP 16

Manufacturing method	Machine knitted
Pile surface	Cut Pile
Pile composition	100% Pure New Wool
Pile height	± 14,0 mm
Carpet thickness	± 16,0 mm
Fire classification	Cfl-s1
Colors	9 standard colors, custom colors available on request from 100 m ²

This carpet is the ultimate knitted carpet for wall to wall installations. This heavy 100% pure new wool velvet structure is suited for residential and commercial environments. A true essential for all projects where underfoot comfort is required. Custom colours can be ordered for a minimum of 100 m².

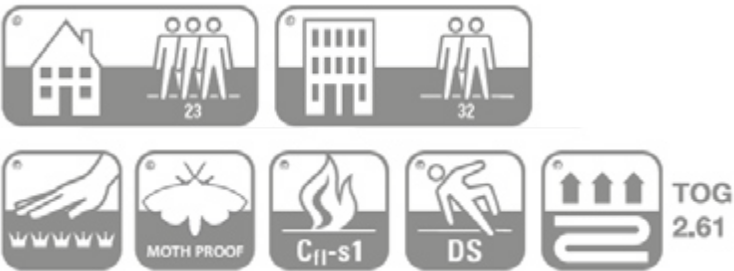
Due to the characteristics of the natural materials used in this carpet, slight variation in color tone may occur. A small deviation from the sample swatches are not considered flaws.

TECHNICAL INFORMATION

STEP UP 16

Manufacturing method	Machine knitted
Pile surface	Cut Pile
Pile composition	100% Pure New Wool
Pile weight	± 2.525 g/m²
Carpet weight	± 4.025 g/m²
Pile height	± 14,0 mm
Carpet thickness	± 16,0 mm
Backing	Action Back P.P.
Roll width	2 or 4 meters
Fire classification	Cfl-s1
Colors	9 standard colors, custom colors available on request
Advantages	+ suitable for residential as well as contract + long-lasting & fire retardent + VOC-emission label A+

Please note that your order will be cut from a roll of 2 meters or 4 meters width. Please include the cutting loss in your order. If you need any help calculating this, we are glad to be of service.



Classification EN 1307:2014 and EN 14041:2004
Step Up 16 fulfills the requirements for LEED certified buildings (EQC 4.3)

PLEASE CONSULT OUR INSTALLATION GUIDE CONTAINING IMPORTANT INFORMATION RELATIVE TO THE PLANNING & INSTALLATION OF THIS PRODUCT.

INSTALLATION GUIDE

PLANNING & INSTALLATION STEP UP 16

You are considering the purchase of a beautiful high-quality carpet, but don't forget it needs a skilled installer to ensure its beauty is lasting. The best carpet installers are highly skilled, have great knowledge, will give excellent advice and take pride in their work. Always ensure your installer works to the national code of practice for carpet installation and selects the best materials and method of carpet laying for the individual project. We believe a site visit from your installer is an essential part of the process and that they should have seen samples of the materials you intend to install.

The following information is provided in good faith and no responsibility is accepted by Frankly Amsterdam for claims arising from any proposed installation methods.

PHASE	OPERATION/DESCRIPTION	STRETCH FITTING METHOD	DOUBLE-STICK FITTING METHOD
1) Project Planning	1.1) Seaming/joining (Note 1)	Side-to-side only	Side-to-side only
2) On site Preparation	2.1) Perimeter Gripper Type (Note 2) 2.2) Gripper Banking 2.3) Gripper Position (From Perimeter of room)	Medium Pin Length Double row/Architectural (Note 3) 8mm	Medium Pin Length Single (Note 4) 8mm
3) Carpet Preparation	3.1) Carpet/Seam Cutting (Note 5) 3.2) Seam Sealing (cut edges) (Note 6) 3.3) Seaming Method (Note 7)	Face Cut (Through Pile) Seam edges must be sealed Electrically activated/Heat Seamed	Face Cut (Through Pile) Seam edges must be sealed N/A

NOTES

- NOTE 1: The carpet is only recommended for side to side joining. End to side or end to end joins are not recommended in this carpet.
- NOTE 2: This carpet is best fitted on a medium pin length gripper.
- NOTE 3: With this carpet structure, a double row of regular width gripper or a single row of wide width architectural gripper will allow the carpet to be stretched to the required tension.
- NOTE 4: In double stick installations, perimeter gripper must be used.
- NOTE 5: This carpet must be cut through the face. Before cutting the carpet, use a pointed tool (bradawl, awl or similar tool) to separate the pile surface and create a straight line cutting mark in the pile by following though along the weave structure. Using a sharp seam cutter, follow the cut mark created in the pile, taking care not to cut across the lines of the weave structure.
- NOTE 6: Where edges are cut to create a seam, the cut edges must be sealed using a proprietary seam sealant. The sealant must be allowed sufficient time to dry.
- NOTE 7: We recommend the use of a quality seaming tape. Where possible the use of an electrically activated seaming tape (Silvaseam) is recommended as this allows greater control in the formation of the seam.

ALL INSTALLATION MUST BE CARRIED OUT IN ACCORDANCE WITH BS5325:2001 THE INSTALLATION OF TEXTILE FLOOR COVERINGS - CODE OF PRACTICE

CARE INSTRUCTIONS

- To extend the lifespan of your carpet, we highly recommend placing walk-off mats at all exterior doorways and service areas where dirt, grease, and moisture are present. These mats can prevent up to 80% of dirt from entering your carpet, protecting it from unnecessary wear. Make sure the mats are large enough for at least two steps, and clean or replace them regularly to maintain their effectiveness.
- Frequent vacuuming is crucial to remove loose dirt and prevent it from causing premature wear. In low-traffic areas, weekly vacuuming is generally sufficient, but in high-traffic zones, such as commercial spaces, daily vacuuming is advised to preserve the carpet's appearance and longevity. Always check that the vacuum bag is not more than half full, and replace filters every 3-4 months, or more frequently in high-use environments.
- For flat weave carpets, use a suction-only vacuum to avoid damaging the fibers or causing fuzzing. Refrain from using beater bars or brush attachments. Additionally, vary the direction in which you vacuum to prevent the carpet from being brushed in the same direction each time. When handling loose-laid rugs, never shake them by holding the edges, as this can damage them. If necessary, gently beat the rug from the back on a protective sheet to dislodge dust and particles before vacuuming.

SPILL AND STAIN REMOVAL

- When a spill occurs, prompt action is essential. For wet stains, immediately blot the area with a clean, white cloth to absorb moisture, starting from the edges and working toward the center to prevent spreading. Avoid rubbing the carpet, as this can damage the fibers and make the stain worse. For water-based stains like tea, coffee, or juice, treat the area with a diluted shampoo solution, and rinse thoroughly with clean water to remove any residue. For oil-based stains, use a solvent-based stain remover.
- If chewing gum is spilled, use a freezer spray to freeze it, then gently scrape it off. If a stain persists, avoid overusing cleaning products and consult a professional cleaner for assistance.

CLEANING FOR HIGH-TRAFFIC AREAS

- In areas with heavy traffic from wheeled devices, such as wheelchair ramps or lift cars, rubber marks can appear. These should be dealt with immediately to prevent them from becoming sticky and attracting dirt. Use an approved gel-type solvent to remove these marks and be sure to rinse the area thoroughly afterward to avoid any residue that might attract more dirt.

DEEP CLEANING

- For carpets that require more intensive cleaning, we recommend professional hot water extraction, which is one of the most effective methods for deep cleaning. This process uses pressurized hot water to flush out dirt and debris from the carpet fibers. Once cleaned, the carpet should be allowed to dry completely before being used again to prevent rapid re-soiling and possible shrinkage.

DRYING AND STORAGE

- After cleaning, allow the carpet to dry fully before walking on it. Walking on a wet carpet can lead to rapid re-soiling. For outdoor carpets, lay them flat in the sun to dry to prevent mold growth. When storing carpets, ensure they are cleaned and completely dry, then roll them up carefully (never fold) and wrap them in plastic to protect them from moisture.

WARRANTY

- Frankly Amsterdam offers a 2-year warranty for normal use of our carpets. If a manufacturing defect is discovered, please contact us within 14 days of delivery and refrain from using the product. Small differences in color, weave, or size may occur and are considered normal commercial tolerances. Please note that we cannot accept complaints regarding shading differences.

ALL INSTALLATION MUST BE CARRIED OUT IN ACCORDANCE WITH BS5325:2001 THE INSTALLATION OF TEXTILE FLOOR COVERINGS - CODE OF PRACTICE

RUG EDGE FINISHING OPTIONS



Overlock edge finish (1 cm)

This edge finish is available for:

- All Star
- Day Off
- Easy Going
- Front Row
- Good Life
- High Tide
- Next Step
- No Doubt
- On Return (straight or rounded corner)
- Step up 9 (straight or rounded corner)



Wool overlock edge finish

This edge finish is available for:

- Line Up
- Out Line
- Lay Out



Border finish (3cm)

This edge finish is available for:

- All Star
- Day Off
- Easy Going
- Front Row
- Good Life
- High Tide
- No Doubt



Hand shaven edge finish

This edge finish is available for:

- Step Up 16.

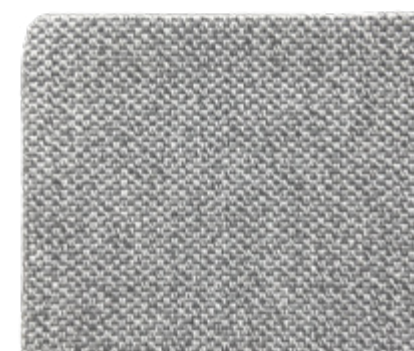


Folded edge finish

This edge finish is available for:

- Roll Over

For rugs with a folded edge please calculate a 10cm margin around all edges. Maximum rug width for this finish is 380 cm.



Folded padded edge finish

This edge finish is available for:

- All Star
- Front Row
- Next Step
- No Doubt

Please calculate a 10cm margin around all edges for a rug with folded padded edge. Maximum rug width for this finish is 380 cm.

Rugs with a folded padded edge will have felted padding at the bottom, therefore they can only be used indoors and can not be used for stair runners.

MAXIMUM RUG SIZES WITH EDGE FINISHING

ARTICLE	OVERLOCK EDGE
All Star	400 x 2000 cm
Day Off	400 x 700 cm, 300 x 700 cm, 200 x 800 cm
Easy Going	400 x 700 cm, 300 x 700 cm, 200 x 800 cm
Front Row	400 x 2000 cm
Good Life	400 x 700 cm, 300 x 700 cm, 200 x 800 cm
High Tide	400 x 700 cm, 300 x 700 cm, 200 x 800 cm
Lay Out	400 x 2000 cm
Line Up	400 x 2000 cm
Next Step	400 x 2000 cm
No Doubt	400 x 2000 cm
On Return	400 x 700 cm, 300x 7 00 cm, 200 x 800 cm
Out Line	400 x 2000 cm
Step Up 9	400 x 600 cm, 300 x 700 cm, 200 x 800 cm

ARTICLE	BORDER FINISH
All Star	400 x 2000 cm
Day Off	400 x 700 cm, 300 x 700 cm, 200 x 800 cm
Easy Going	400 x 700 cm, 300 x 700 cm, 200 x 800 cm
Front Row	400 x 2000 cm
Good Life	400 x 700 cm, 300 x 700 cm, 200 x 800 cm
High Tide	400 x 700 cm, 300 x 700 cm, 200 x 800 cm
No Doubt	400 x 2000 cm

ARTICLE	HAND SHAVEN EDGE FINISH
Step Up 16	400 x 600 cm, 300 x 700 cm, 200 x 800 cm

ARTICLE	FOLDED EDGE FINISH
All Star	380 x 380 cm
Front Row	380 x 380 cm
Next Step	380 x 380 cm
No Doubt	380 x 380 cm
Roll Over	400 x 2000 cm

