

FRANKLY
AMSTERDAM

SUSTAINABILITY



Here at Frankly Amsterdam we do things differently, and have been from the start.
Our products have honest origins. Production takes place in decent places by genuine people.

We're thinking about the future, which is why our collection of rugs,
curtains and throws are produced in Europe from quality, natural or recycled materials.

INDEX

This is an interactive file
by clicking on a product image you will go directly to the right page in this file
by clicking on our logo you will go back to this index



RUGS

Bamboo
Day Light
Day Light Pattern
Night Fire
Show Off
Show Off Gradient

Wool
At Ease
Bottom Line
Coming Home
Eagle Eye
Mile Stone
Solid Ground

Cotton
Cotton Candy

Eucalyptus
At Ease
At Random
Bottom Line
Chasing Light
Colour Me
Mile Stone
Move Slow
Night Fire
Perfect Match
Think Big

Merino
Saint Cloud

Mohair
Corner Stone
Land Mark
Second Nature
Show Off
Show Off Gradient
Super Moon
Think Big
Un Fold

Biodegradable PET
New Start

Recycled PET
Easy Going
Good Life
High Tide

CONTRACT

Recycled Plastic
On Return

Eucalyptus
Done Deal

Wool
Done Deal
Lay Out
Line Up
Out Line
Roll Over
Step Up 9
Step Up 16

CURTAINS

Recycled Cotton
Crown Jewel
Mind Full
Re Cover
True Story

Linen
Clear Day
Day Break
First Sight
Flaw Less
In Flow
New Day
Nice View
On Point
Stay In
Sure Thing

THROWS

Cashmere
Come Over
Fine Line
Settle In
Soft Space

FRANKLY
AMSTERDAM

RUGS

AT EASE COLLECTION
By Frankly Amsterdam



MATERIAL STUDY



AT EASE 3303
Hand tufted
50% Eucalyptus, 50% wool
35 mm (or custom height)
10 Standard colors, custom colors from our Eucalyptus and Wool color box
Any size and shape possible

RUG SPECIFICATIONS:
Pile: 50% Eucalyptus 50% Wool
Yarn origin: Europe, New Zealand
Latex: Luxury contract latex
Backing: 100% pes

ABOUT EUCALYPTUS
+ It is one of the most sustainable processes of fiber-production to this day.
+ Woodpulp comes from European forests that are strictly managed according to FSC certificate.
+ The Eucalyptus fiber is completely biodegradable.
+ The land used for Eucalyptus is unsuitable for food crops, so there's no competition with the food-industry.
+ The production of Eucalyptus uses only 2,8% water compared to the production of cotton.
+ The production process of Eucalyptus is a nearly closed loop process, where the the water involved in the production is recycled during manufacturing, and the finishing agents are fully biodegradable.
+ The dyeing of the Eucalyptus yarn is 100% ecological.

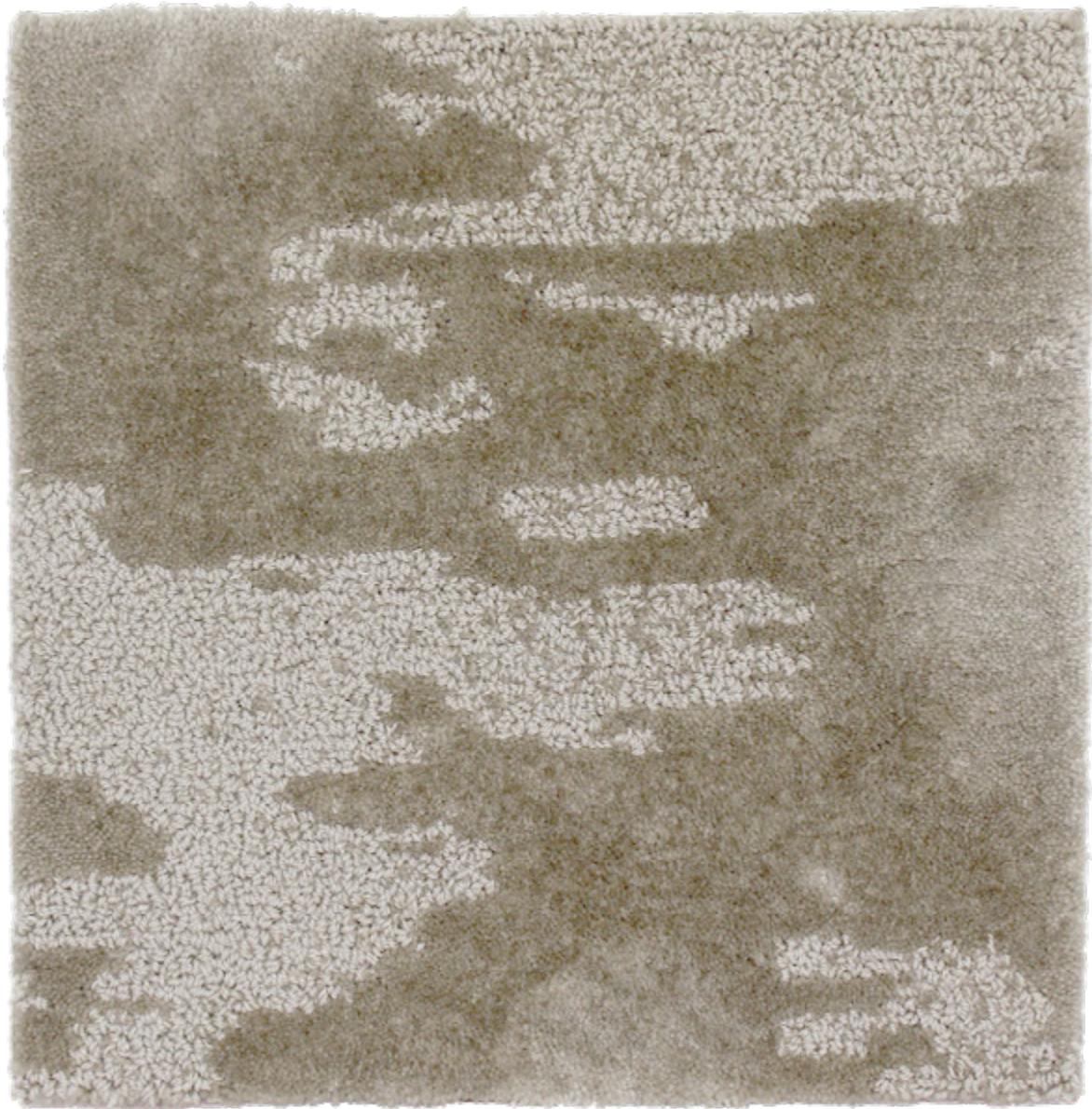
ABOUT WOOL
+ Our Wool yarn is recovered strictly from sheep living in Europe and New Zealand.
+ The Wool fiber is completely biodegradable.
+ Wool is a renewable product. After the sheering of the sheep, their Wool fleece just grows back. In fact, the sheep needs to be sheered for their own well-being.
+ The sheering of the sheep is done in an animal friendly manner.
+The dyeing of our wool yarn is 100% ecological.

CERTIFICATES
NP EN ISO 9001:2008 certified by TUV Rheinland
Burning classification - EN 13501-1:2010 - Cfl-s1
Luxury Class - LC 5 (Prestige)
Forest Stewardship Council (FSC) certified

AT RANDOM COLLECTION
By Frankly Amsterdam



MATERIAL STUDY



AT RANDOM 2304

Hand tufted
100% Thick Eucalyptus
8 mm cut and loop pile
8 Standard colors, custom colors from our Eucalyptus color box
Any size and shape possible

RUG SPECIFICATIONS:
Pile: 100% Thick Eucalyptus
Yarn origin: Europe
Latex: Luxury contract latex
Backing: 100% pes

ABOUT EUCALYPTUS
+ It is one of the most sustainable processes of fiber-production to this day.
+ Woodpulp comes from European forests that are strictly managed according to FSC certificate.
+ The Eucalyptus fiber is completely biodegradable.
+ The land used for Eucalyptus is unsuitable for food crops, so there's no competition with the food-industry.
+ The production of Eucalyptus uses only 2,8% water compared to the production of cotton.
+ The production process of Eucalyptus is a nearly closed loop process, where the water involved in the production is recycled during manufacturing, and the finishing agents are fully biodegradable.
+ The dyeing of the Eucalyptus yarn is 100% ecological.

CERTIFICATES
NP EN ISO 9001:2008 certified by TUV Rheinland
Burning classification - EN 13501-1:2010 - Cfl-s1
Luxury Class - LC 5 (Prestige)
Forest Stewardship Council (FSC) certified

CHASING LIGHT COLLECTION
By Frankly Amsterdam



MATERIAL STUDY



CHASING LIGHT 2903
Hand tufted
100% Eucalyptus
8 - 10 mm cut and loop pile
6 Standard colors, custom colors from our Eucalyptus color box
Any size and shape possible

RUG SPECIFICATIONS:
Pile: 100% Eucalyptus
Yarn origin: Europe
Latex: Luxury contract latex
Backing: 100% pes

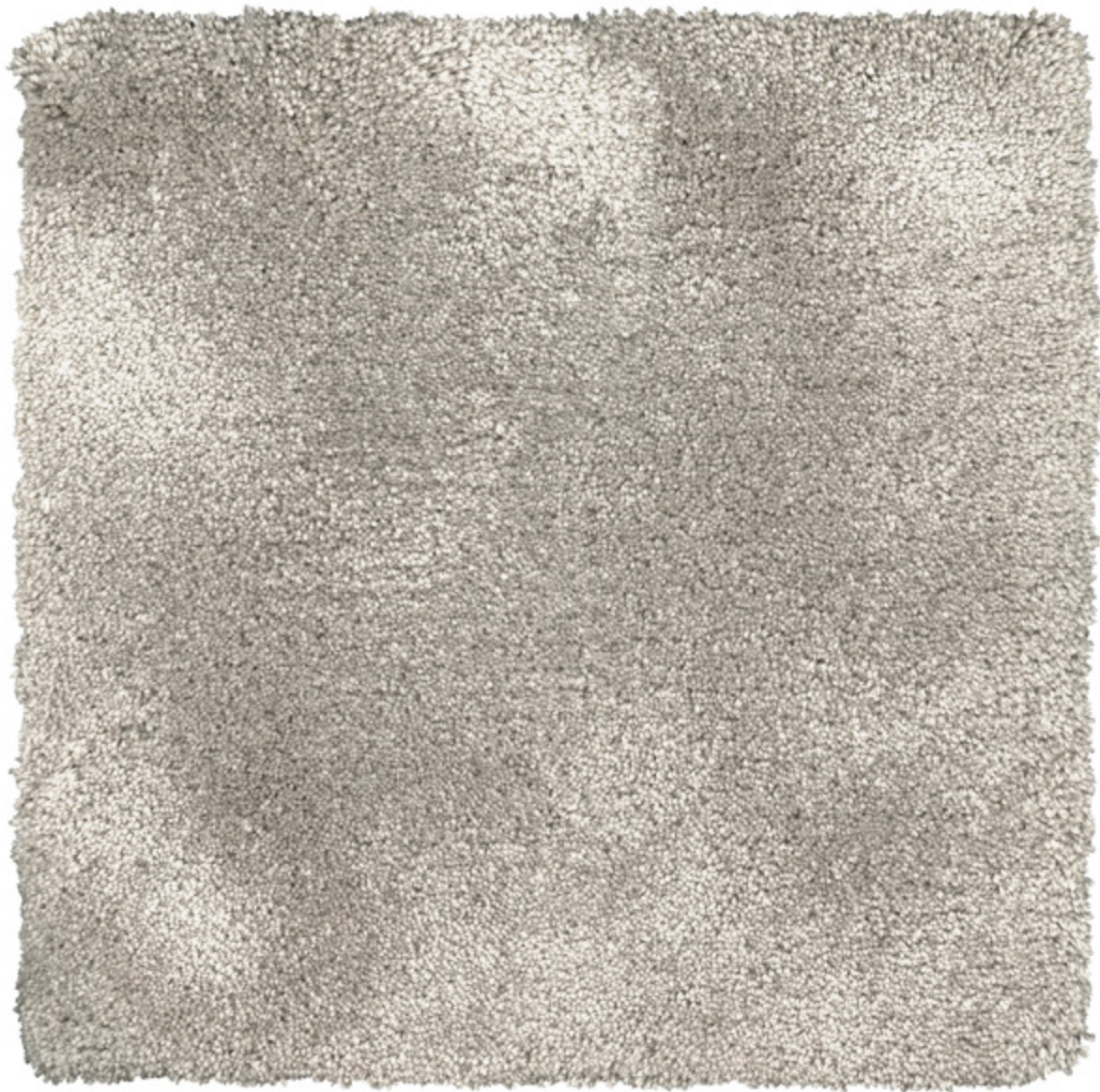
ABOUT EUCALYPTUS
+ It is one of the most sustainable processes of fiber-production to this day.
+ Woodpulp comes from European forests that are strictly managed according to FSC certificate.
+ The Eucalyptus fiber is completely biodegradable.
+ The land used for Eucalyptus is unsuitable for food crops, so there's no competition with the food-industry.
+ The production of Eucalyptus uses only 2,8% water compaired to the production of cotton.
+ The production process of Eucalyptus is a nearly closed loop process, where the the water involved in the production is recycled during manufacturing, and the finishing agents are fully biodegradable.
+ The dyeing of the Eucalyptus yarn is 100% ecological.

CERTIFICATES
NP EN ISO 9001:2008 certified by TUV Rheinland
Burning classification - EN 13501-1:2010 - Cfl-s1
Luxury Class - LC 5 (Prestige)
Forest Stewardship Council (FSC) certified

COLOUR ME COLLECTION
By Frankly Amsterdam



MATERIAL STUDY



COLOUR ME 3901

Hand tufted
100% Thick Eucalyptus
16 mm or custom height

9 Standard colors, custom colors from our Eucalyptus color box (marked with * symbol)
Any size and shape possible

RUG SPECIFICATIONS:

Pile: 100% Thick Eucalyptus
Yarn origin: Europe
Latex: Luxury contract latex
Backing: 100% pes

ABOUT EUCALYPTUS

- + It is one of the most sustainable processes of fiber-production to this day.
- + Woodpulp comes from European forests that are strictly managed according to FSC certificate.
- + The Eucalyptus fiber is completely biodegradable.
- + The land used for Eucalyptus is unsuitable for food crops, so there's no competition with the food-industry.
- + The production of Eucalyptus uses only 2,8% water compaired to the production of cotton.
- + The production process of Eucalyptus is a nearly closed loop process, where the the water involved in the production is recycled during manufacturing, and the finishing agents are fully biodegradable.
- + The dyeing of the Eucalyptus yarn is 100% ecological.

CERTIFICATES

NP EN ISO 9001:2008 certified by TUV Rheinland
Burning classification - EN 13501-1:2010 - Cfl-s1
Luxury Class - LC 5 (Prestige)
Forest Stewardship Council (FSC) certified

COMING HOME COLLECTION
By Frankly Amsterdam



MATERIAL STUDY



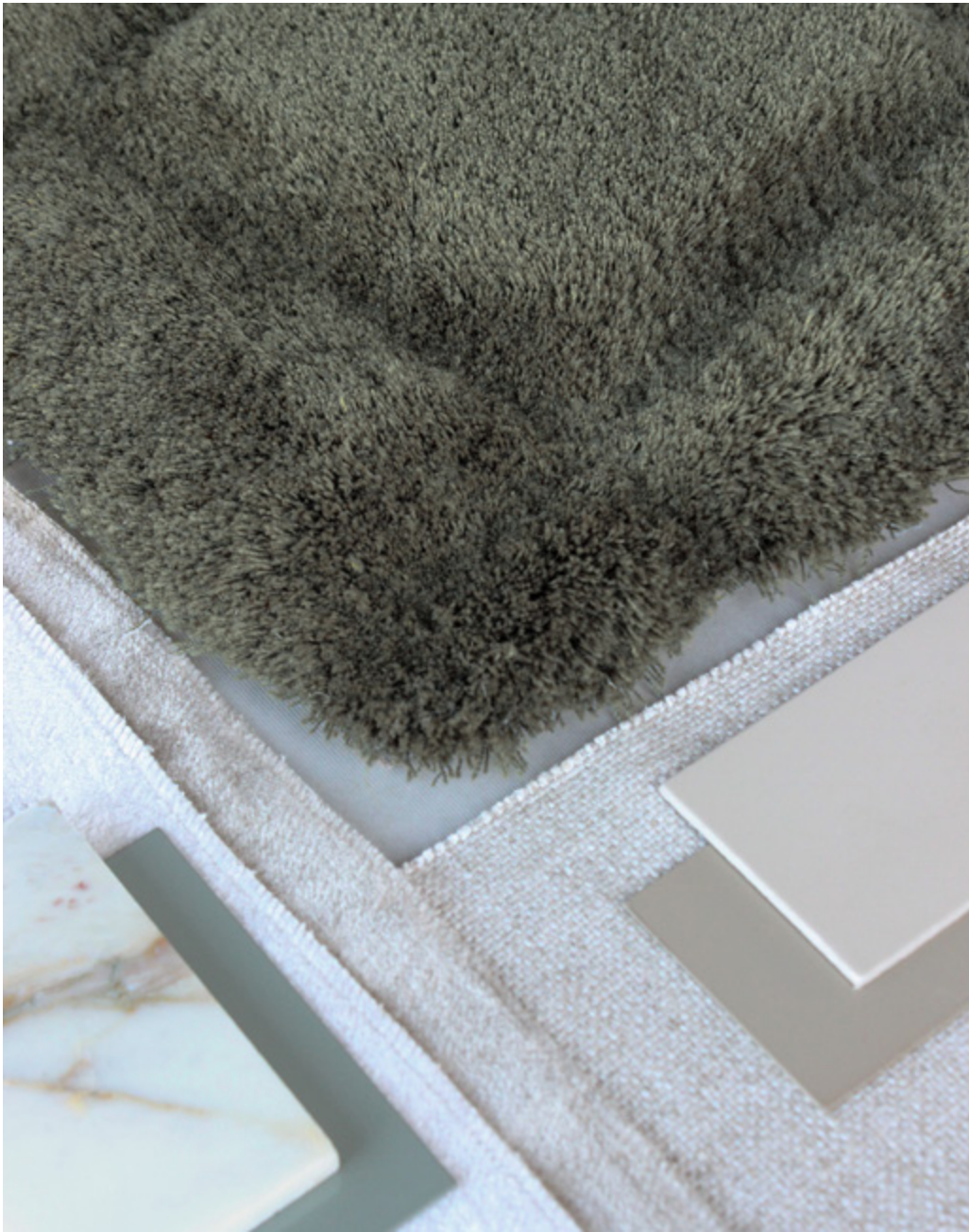
COMING HOME 9300
Hand Tufted
100% New Zealand Wool
12 mm cut or custom height
Custom colors from our New Zealand Wool color box
Any size and shape possible

RUG SPECIFICATIONS
Pile: 100% New Zealand Wool
Yarn origin: Europe
Latex: Luxury contract latex
Backing: 100% pes

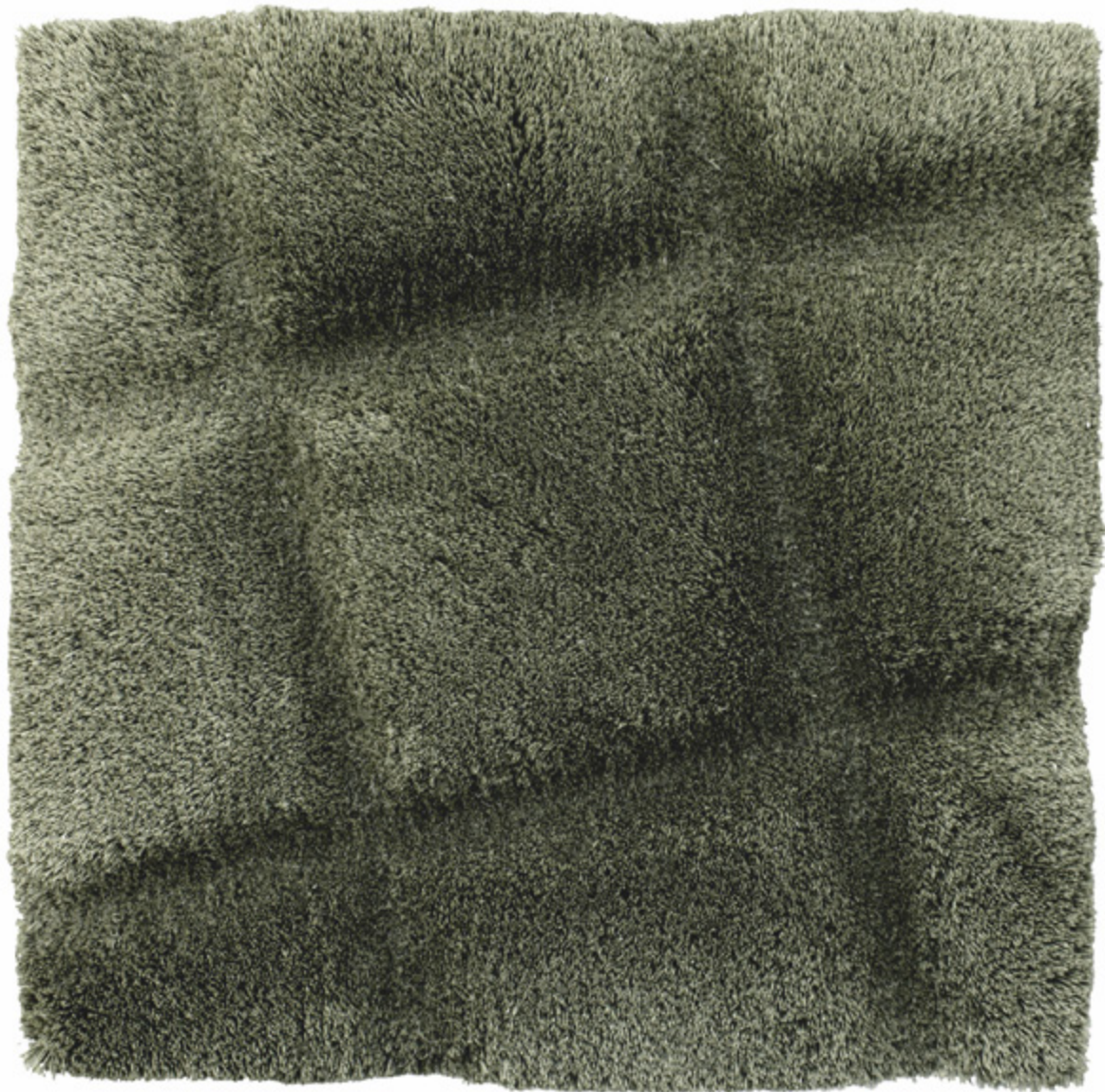
ABOUT New Zealand Wool
+ Soft and warm: suitable for sensitive skin.
+ Absorbent: natural and effective moisture management.
+ Resilient: wool has great natural elasticity, causing it to recover to its original shape.
+ Naturally anti-bacterial: resistant to bacteria and thus suitable for people with allergies.
+ Resistent to moist: wool is not sensitive to moist.
+ Longwearing: a strong fibre when wet or dry and therefor very wear-resistant.
+ Our wool yarn is recovered strictly from sheep living in Europe.
+ The wool fiber is completely biodegradable.
+ Wool is a renewable product. After the sheering of the sheep, their wool fleece just grows back. In fact, the sheep need to be sheered for their own well-being.
+ The sheering of the sheep is done in an animal friendly manner.
+ The dyeing of our wool yarn is 100% ecological.

CERTIFICATES
NP EN ISO 9001:2008 certified by TUV Rheinland
Burning classification - EN 13501-1:2010 - Bfl-s1

CORNER STONE COLLECTION
By Frankly Amsterdam



MATERIAL STUDY



CORNER STONE 4503
Hand tufted in 3D
100% Mohair
12 - 25 mm
8 Standard colors, custom colors from our Mohair color box
Any size and shape possible

RUG SPECIFICATIONS:

Pile: 100% Mohair

Yarn origin: Europe

Latex: Luxury contract latex

Backing: 100% pes

ABOUT MOHAIR

+ The Mohair fiber is completely biodegradable.

+ Mohair is, like virgin wool, a renewable product. After the sheering of the goat, its fleece just grows back. In fact, the goats need to be sheered for their own well-being.

+ The sheering of the goat is done in an animal friendly manner.

+ The dyeing of our Mohair yarn is 100% ecological.

CERTIFICATES

NP EN ISO 9001:2008 certified by TUV Rheinland

Burning classification - EN 13501-1:2010 - Bfl-s1

Luxury Class - LC 5 (Prestige)

COTTON CANDY COLLECTION
By Frankly Amsterdam



MATERIAL STUDY
COTTON CANDY 12 MM - COLOR 2



COTTON CANDY 22 MM - COLOR 6
Hand tufted
100% Cotton
12 or 22 mm or custom height
55 standard colors
Any size and shape possible

RUG SPECIFICATIONS:

Pile: 100% Cotton
Yarn origin: Europe
Latex: Luxury contract latex
Backing: 100% pes

ABOUT COTTON

- + The OKO-TEX STANDARD 100 GMO guarantees every component of this product has undergone rigorous testing to eradicate any harmful substances.
- + This yarn is made out of organic cotton, meaning only natural methods and no toxic chemicals have been used during the farming process.
- + The Cotton seeds used to produce organic cotton are non GMO, meaning they are free of contaminations.
- + Cotton is a renewable resource that is 100% natural and therefore biodegradable.

CERTIFICATES

OKO-TEX STANDARD 100 GMO

DAY LIGHT COLLECTION
By Frankly Amsterdam



MATERIAL STUDY



DAY LIGHT 6710
Hand tufted
100% Bamboo
14 mm (or custom height)
10 Standard colors, custom colors from our Bamboo color box
Any size and shape possible

RUG SPECIFICATIONS
Pile: 100% Bamboo
Yarn origin: Europe
Latex: Luxury contract latex
Backing: 100% pes

ABOUT BAMBOO
+ Bamboo yarn is environmental friendly.
It comes from a natural and sustainable source.
+ During growth the soil and roots aren't disturbed which is great for soil health.
+ It is a renewable source and the fastest growing woody plant on our planet.
+ It releases abundant oxygen into the atmosphere.
+ The dyeing of our Bamboo yarn is eco-friendly.

CERTIFICATES
NP EN ISO 9001:2008 certified by TUV Rheinland
Burning classification - EN 13501-1:2010 - Bfl-s1

DAY LIGHT PATTERN COLLECTION
by Frankly Amsterdam



MATERIAL STUDY



DAY LIGHT PATTERN A

Hand tufted
100% Bamboo
14 - 18 mm
10 Standard colors, custom colors from our Bamboo color box
Any size and shape and pattern possible. Choose your own pattern centerpoint

RUG SPECIFICATIONS

Pile: 100% Bamboo
Yarn origin: Europe
Latex: Luxury contract latex
Backing: 100% pes

ABOUT BAMBOO

- + Bamboo yarn is environmental friendly.
- It comes from a natural and sustainable source.
- + During growth the soil and roots aren't disturbed which is great for soil health.
- + It is a renewable source and the fastest growing woody plant on our planet.
- + It releases abundant oxygen into the atmosphere.
- + The dyeing of our Bamboo yarn is eco-friendly.

CERTIFICATES

NP EN ISO 9001:2008 certified by TUV Rheinland
Burning classification - EN 13501-1:2010 - Bfl-s1

LAND MARK COLLECTION
By Frankly Amsterdam



MATERIAL STUDY



LAND MARK 4403
Hand tufted in 3D
100% Mohair
12 - 25 mm
8 Standard colors, custom colors from our Mohair color box
Any size possible based on circles of 54 cm

RUG SPECIFICATIONS:

Pile: 100% Mohair

Yarn origin: Europe

Latex: Luxury contract latex

Backing: 100% pes

ABOUT MOHAIR

+ The Mohair fiber is completely biodegradable.

+ Mohair is, like virgin wool, a renewable product. After the sheering of the goat, its fleece just grows back. In fact, the goats need to be sheered for their own well-being.

+ The sheering of the goat is done in an animal friendly manner.

+ The dyeing of our Mohair yarn is 100% ecological.

CERTIFICATES

NP EN ISO 9001:2008 certified by TUV Rheinland

Burning classification - EN 13501-1:2010 - Bfl-s1

Luxury Class - LC 5 (Prestige)

MOON PARTS
By Art-in-Return and Frankly Amsterdam



DETAIL



MOON PARTS 8601
Hand tufted in 3D
100% Wool
12 - 45 mm & 12 mm border
1 standard color, custom color from our Wool box
170x255cm, 200x300cm, 235x350cm, 300x450cm
or any other size within the same ratio

RUG SPECIFICATIONS
Pile: 100% Wool
Yarn origin: Europe, New Zealand
Latex: Luxury contract latex
Backing: 100% pes

ABOUT WOOL
+ Our Wool yarn is recovered strictly from sheep living in Europe and New Zealand.
+ The Wool fiber is completely biodegradable.
+ Wool is a renewable product. After the sheering of the sheep, their Wool fleece just grows back. In fact, the sheep needs to be sheered for their own well-being.
+ The sheering of the sheep is done in an animal friendly manner.
+The dyeing of our wool yarn is 100% ecological.

CERTIFICATES
NP EN ISO 9001:2008 certified by TUV Rheinland
Burning classification - EN 13501-1:2010 - Bfl-s1
Luxury Class - LC 5 (Prestige)

MOVE SLOW COLLECTION
By Frankly Amsterdam



MATERIAL STUDY



MOVE SLOW 3503
Hand tufted
100% Eucalyptus
16 mm (or custom height)
8 Standard colors, custom colors from our Eucalyptus color box
Any size and shape possible

RUG SPECIFICATIONS:
Pile: 100% Eucalyptus
Yarn origin: Europe
Latex: Luxury contract latex
Backing: 100% pes

ABOUT EUCALYPTUS
+ It is one of the most sustainable processes of fiber-production to this day.
+ Woodpulp comes from European forests that are strictly managed according to FSC certificate.
+ The Eucalyptus fiber is completely biodegradable.
+ The land used for Eucalyptus is unsuitable for food crops, so there's no competition with the food-industry.
+ The production of Eucalyptus uses only 2,8% water compared to the production of cotton.
+ The production process of Eucalyptus is a nearly closed loop process, where the the water involved in the production is recycled during manufacturing, and the finishing agents are fully biodegradable.
+ The dyeing of the Eucalyptus yarn is 100% ecological.

CERTIFICATES
NP EN ISO 9001:2008 certified by TUV Rheinland
Burning classification - EN 13501-1:2010 - Cfl-s1
Luxury Class - LC 5 (Prestige)
Forest Stewardship Council (FSC) certified

NEW START COLLECTION
By Frankly Amsterdam



MATERIAL STUDY



NEW START - 5
Hand tufted
100% Biodegradable PET
12 mm (or custom height)
35 Standard colors
Any size and shape possible

RUG SPECIFICATIONS:
Pile: 100% Biodegradable PET
Yarn origin: Europe
Latex: Luxury contract latex
Backing: 100% pes

ABOUT BIODEGRADABLE PET
+ This innovative yarn is made from post-consumer recycled plastic bottles
+ Recycling a single PET bottle can conserve enough energy to light a 60 watt bulb for up to 6 hours
+ Under the correct circumstances this yarn is 100% biodegradable, due to the Bio-R fiber that is implemented into the yarn after recycling
+ Unlike regular recycled PET which takes hundreds of years to decompose, this yarn is 100% biodegradable within 12 months
+ Bio-R can be well decomposed in landfill and/or sea water and thus reduces textiles accumulation in landfills and reduces micro plastic pollution in oceans
+ Soil left behind from the degradation process contains no plastic and remains perfectly suitable for plant growth
+ It is important to note that this PET is only biodegradable under the correct circumstances and should not be mixed with regular plastic waste. Instead, it should be responsibly disposed of in residual waste streams
+ Please note: all the information in this document is applicable to the Biodegradable PET yarn, the backing of the New Start rug is not biodegradable and requires a different type of recycling

CERTIFICATES
GRS (Global Recycled Standard - 100% recycled)
OEKO-TEX Standard 100
Ocean Bound Plastic Certified
ASTM D6954-04 (landmark standard for testing biodegradability of PET fibers)
Burning classification - EN 13501-1:2018 - Bfl-s2

NIGHT FIRE COLLECTION
By Frankly Amsterdam



MATERIAL STUDY



NIGHT FIRE 5508
Hand tufted
65% Eucalyptus, 35% Bamboo
16 mm (or custom height)
8 Standard colors, custom colors from our Eucalyptus & Bamboo color box
Any size and shape possible

RUG SPECIFICATIONS:
Pile: 65% Eucalyptus, 35% Bamboo
Yarn origin: Europe
Latex: Luxury contract latex
Backing: 100% pes

ABOUT EUCALYPTUS
+ It is one of the most sustainable processes of fiber-production to this day.
+ Woodpulp comes from European forests that are strictly managed according to FSC certificate.
+ The Eucalyptus fiber is completely biodegradable.
+ The land used for Eucalyptus is unsuitable for food crops, so there's no competition with the food-industry.
+ The production of Eucalyptus uses only 2,8% water compared to the production of cotton.
+ The production process of Eucalyptus is a nearly closed loop process, where the water involved in the production is recycled during manufacturing, and the finishing agents are fully biodegradable.
+ The dyeing of the Eucalyptus yarn is 100% ecological.

ABOUT BAMBOO
+ Bamboo yarn is environmental friendly.
It comes from a natural and sustainable source.
+ During growth the soil and roots aren't disturbed which is great for soil health.
+ It is a renewable source and the fastest growing woody plant on our planet.
+ It releases abundant oxygen into the atmosphere.
+ The dyeing of our Bamboo yarn is eco-friendly.

CERTIFICATES
NP EN ISO 9001:2008 certified by TUV Rheinland
Burning classification - EN 13501-1:2010 - Bfl-s1

PERFECT MATCH COLLECTION
By Frankly Amsterdam



MATERIAL STUDY



PERFECT MATCH 2002
Hand tufted
80% Eucalyptus, 20% natural wool
12 mm
8 Standard colors, custom colors from our Eucalyptus & Wool color box
Any size and shape possible

RUG SPECIFICATIONS:
Pile: 80% Eucalyptus, 20% Wool
Yarn origin: Europe, New Zealand
Latex: Luxury contract latex
Backing: 100% pes

ABOUT EUCALYPTUS

- + It is one of the most sustainable processes of fiber-production to this day.
- + Woodpulp comes from European forests that are strictly managed according to FSC certificate.
- + The Eucalyptus fiber is completely biodegradable.
- + The land used for Eucalyptus is unsuitable for food crops, so there's no competition with the food-industry.
- + The production of Eucalyptus uses only 2,8% water compaired to the production of cotton.
- + The production process of Eucalyptus is a nearly closed loop process, where the the water involved in the production is recycled during manufacturing, and the finishing agents are fully biodegradable.
- + The dyeing of the Eucalyptus yarn is 100% ecological.

ABOUT WOOL

- + Our Wool yarn is recovered strictly from sheep living in Europe and New Zealand.
- + The Wool fiber is completely biodegradable.
- + Wool is a renewable product. After the sheering of the sheep, their Wool fleece just grows back. In fact, the sheep needs to be sheered for their own well-being.
- + The sheering of the sheep is done in an animal friendly manner.
- +The dyeing of our wool yarn is 100% ecological.

CERTIFICATES
NP EN ISO 9001:2008 certified by TUV Rheinland
Burning classification - EN 13501-1:2010 - Cfl-s1
Luxury Class - LC 5 (Prestige)
Forest Stewardship Council (FSC) certified

SAINT CLOUD COLLECTION
By Frankly Amsterdam



MATERIAL STUDY



SAINT CLOUD 5803

Hand tufted
100% Merino wool
18 mm (or custom height) in shaven or unshaven finish
7 Standard colors
Any size and shape possible

RUG SPECIFICATIONS:

Pile: 100% Merino

Yarn origin: Europe

Latex: Luxury contract latex

Backing: 100% pes

ABOUT MOHAIR

+ The Merino fiber is completely biodegradable.

+ Merino is, like virgin wool, a renewable product. After the sheering of the goat, its fleece just grows back. In fact, the sheep need to be sheered for their own well-being.

+ The sheering of the sheep is done in an animal friendly manner.

+ The dyeing of our Merino yarn is 100% ecological.

CERTIFICATES

NP EN ISO 9001:2008 certified by TUV Rheinland

Burning classification - EN 13501-1:2010 - Bfl-s1

Luxury Class - LC 5 (Prestige)

SECOND NATURE COLLECTION
By Frankly Amsterdam



MATERIAL STUDY



SECOND NATURE 6405

Hand tufted
100% Mohair
14 + 18 mm (or custom height)
10 Standard colors, custom colors from our Mohair color box
Any size possible in 3 organic shapes

RUG SPECIFICATIONS:

Pile: 100% Mohair

Yarn origin: Europe

Latex: Luxury contract latex

Backing: 100% pes

ABOUT MOHAIR

+ The Mohair fiber is completely biodegradable.

+ Mohair is, like virgin wool, a renewable product. After the sheering of the goat, its fleece just grows back. In fact, the goats need to be sheered for their own well-being.

+ The sheering of the goat is done in an animal friendly manner.

+ The dyeing of our Mohair yarn is 100% ecological.

CERTIFICATES

NP EN ISO 9001:2008 certified by TUV Rheinland

Burning classification - EN 13501-1:2010 - Bfl-s1

Luxury Class - LC 5 (Prestige)

SHOW OFF COLLECTION
By Frankly Amsterdam



MATERIAL STUDY



SHOW OFF 5605

Hand tufted
50% Mohair, 50% Bamboo
40 mm (or custom height)
9 Standard colors, custom colors from our Mohair & Bamboo color box
Any size and shape possible

RUG SPECIFICATIONS
Pile: 50% Mohair, 50% Bamboo
Yarn origin: Europe
Latex: Luxury contract latex
Backing: 100% pes

ABOUT MOHAIR
+ The Mohair fiber is completely biodegradable.
+ Mohair is, like virgin wool, a renewable product. After the sheering of the goat, its fleece just grows back. In fact, the goats need to be sheered for their own well-being.
+ The sheering of the goat is done in an animal friendly manner.
+ The dyeing of our Mohair yarn is 100% ecological.

ABOUT BAMBOO
+ Bamboo yarn is environmental friendly.
It comes from a natural and sustainable source.
+ During growth the soil and roots aren't disturbed which is great for soil health.
+ It is a renewable source and the fastest growing woody plant on our planet.
+ It releases abundant oxygen into the atmosphere.
+ The dyeing of our Bamboo yarn is eco-friendly.

CERTIFICATES
NP EN ISO 9001:2008 certified by TUV Rheinland
Burning classification - EN 13501-1:2010 - Bfl-s1

SHOW OFF GRADIENT COLLECTION
By Frankly Amsterdam



MATERIAL STUDY



SHOW OFF GRADIENT 5610

Hand tufted
50% Mohair, 50% Bamboo
40 mm (or custom height)
2 Standard colors, custom colors available
Choose a start color and end color from our Mohair or Bamboo color box
Any size and shape possible

RUG SPECIFICATIONS
Pile: 50% Mohair, 50% Bamboo
Yarn origin: Europe
Latex: Luxury contract latex
Backing: 100% pes

ABOUT MOHAIR
+ The Mohair fiber is completely biodegradable.
+ Mohair is, like virgin wool, a renewable product. After the sheering of the goat, its fleece just grows back. In fact, the goats need to be sheered for their own well-being.
+ The sheering of the goat is done in an animal friendly manner.
+ The dyeing of our Mohair yarn is 100% ecological.

ABOUT BAMBOO
+ Bamboo yarn is environmental friendly.
It comes from a natural and sustainable source.
+ During growth the soil and roots aren't disturbed which is great for soil health.
+ It is a renewable source and the fastest growing woody plant on our planet.
+ It releases abundant oxygen into the atmosphere.
+ The dyeing of our Bamboo yarn is eco-friendly.

CERTIFICATES
NP EN ISO 9001:2008 certified by TUV Rheinland
Burning classification - EN 13501-1:2010 - Bfl-s1

SOLID GROUND COLLECTION
By Frankly Amsterdam



MATERIAL STUDY



SOLID GROUND 9300
Hand tufted
100% New Zealand Wool
9 mm loop and 16 mm cut
custom colors available
New Zealand Wool color box
Any size and shape possible

RUG SPECIFICATIONS
Pile: 100% New Zealand Wool
Yarn origin: New Zealand
Latex: Luxury contract latex
Backing: 100% pes

ABOUT New Zealand Wool
+ Soft and warm: suitable for sensitive skin.
+ Absorbent: natural and effective moisture management.
+ Resilient: wool has great natural elasticity, causing it to recover to its original shape.
+ Naturally anti-bacterial: resistant to bacteria and thus suitable for people with allergies.
+ Resistent to moist: wool is not sensitive to moist.
+ Longwearing: a strong fibre when wet or dry and therefor very wear-resistant.
+ Our wool yarn is recovered strictly from sheep living in Europe.
+ The wool fiber is completely biodegradable.
+ Wool is a renewable product. After the sheering of the sheep, their wool fleece just grows back. In fact, the sheep need to be sheered for their own well-being.
+ The sheering of the sheep is done in an animal friendly manner.
+ The dyeing of our wool yarn is 100% ecological.

CERTIFICATES
NP EN ISO 9001:2008 certified by TUV Rheinland
Burning classification - EN 13501-1:2010 - Bfl-s1

SUPER MOON COLLECTION
By Frankly Amsterdam



MATERIAL STUDY



SUPER MOON 4307
Hand tufted
100% Mohair
18 mm (or custom height)
9 Standard colors, custom colors from our Mohair color box
Any size and shape possible

RUG SPECIFICATIONS:

Pile: 100% Mohair
Yarn origin: Europe
Latex: Luxury contract latex
Backing: 100% pes

ABOUT MOHAIR

- + The Mohair fiber is completely biodegradable.
- + Mohair is, like virgin wool, a renewable product. After the sheering of the goat, its fleece just grows back. In fact, the goats need to be sheered for their own well-being.
- + The sheering of the goat is done in an animal friendly manner.
- + The dyeing of our Mohair yarn is 100% ecological.

CERTIFICATES

NP EN ISO 9001:2008 certified by TUV Rheinland
Burning classification - EN 13501-1:2010 - Bfl-s1
Luxury Class - LC 5 (Prestige)

SUPER MOON 45 COLLECTION
By Frankly Amsterdam



MATERIAL STUDY



SUPER MOON 45 4301
Hand tufted
100% Mohair
45 mm (or custom height)
9 Standard colors, custom colors from our Mohair color box
Any size and shape possible

RUG SPECIFICATIONS:

Pile: 100% Mohair
Yarn origin: Europe
Latex: Luxury contract latex
Backing: 100% pes

ABOUT MOHAIR

- + The Mohair fiber is completely biodegradable.
- + Mohair is, like virgin wool, a renewable product. After the sheering of the goat, its fleece just grows back. In fact, the goats need to be sheered for their own well-being.
- + The sheering of the goat is done in an animal friendly manner.
- + The dyeing of our Mohair yarn is 100% ecological.

CERTIFICATES

NP EN ISO 9001:2008 certified by TUV Rheinland
Burning classification - EN 13501-1:2010 - Bfl-s1
Luxury Class - LC 5 (Prestige)

THINK BIG COLLECTION
by Frankly Amsterdam



MATERIAL STUDY



THINK BIG 6901
Hand tufted with rounded corners
Eucalyptus & Mohair
12mm (Eucalyptus center) and 45mm (Mohair border)
1 Standard color
Make your custom color from our Mohair and Eucalyptus color box

RUG SPECIFICATIONS:

Pile: Eucalyptus & Mohair

Yarn origin: Europe

Latex: Luxury contract latex

Backing: 100% pes

ABOUT EUCALYPTUS

- + It is one of the most sustainable processes of fiber-production to this day.
- + Woodpulp comes from European forests that are strictly managed according to FSC certificate.
- + The Eucalyptus fiber is completely biodegradable.
- + The land used for Eucalyptus is unsuitable for food crops, so there's no competition with the food-industry.
- + The production of Eucalyptus uses only 2,8% water compaired to the production of cotton.
- + The production process of Eucalyptus is a nearly closed loop process, where the the water involved in the production is recycled during manufacturing, and the finishing agents are fully biodegradable.
- + The dyeing of the Eucalyptus yarn is 100% ecological.

ABOUT MOHAIR

- + The Mohair fiber is completely biodegradable.
- + Mohair is, like virgin wool, a renewable product. After the sheering of the goat, its fleece just grows back. In fact, the goats need to be sheered for their own well-being.
- + The sheering of the goat is done in an animal friendly manner.
- + The dyeing of our Mohair yarn is 100% ecological.

CERTIFICATES

NP EN ISO 9001:2008 certified by TUV Rheinland

Burning classification - EN 13501-1:2010 - Cfl-s1

Luxury Class - LC 5 (Prestige)

Forest Stewardship Council (FSC) certified

UN FOLD COLLECTION
By Frankly Amsterdam



MATERIAL STUDY



UN FOLD 8502
Hand tufted
100% Mohair
14 mm & 20 mm
7 standard + 110 uni
Any size and shape possible

RUG SPECIFICATIONS:

Pile: 100% Mohair

Yarn origin: Europe

Latex: Luxury contract latex

Backing: 100% pes

ABOUT MOHAIR

+ The Mohair fiber is completely biodegradable.

+ Mohair is, like virgin wool, a renewable product. After the sheering of the goat, its fleece just grows back. In fact, the goats need to be sheered for their own well-being.

+ The sheering of the goat is done in an animal friendly manner.

+ The dyeing of our Mohair yarn is 100% ecological.

CERTIFICATES

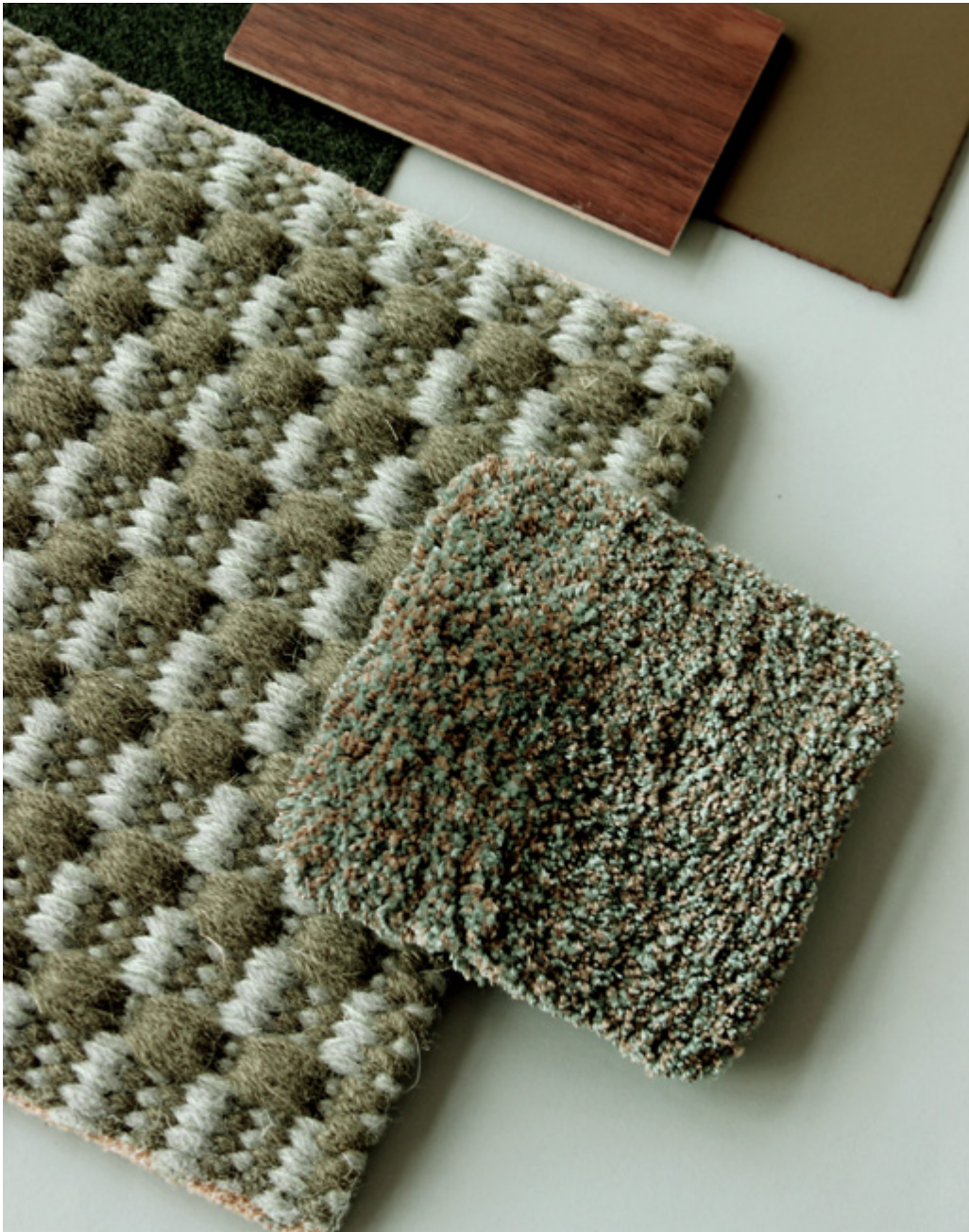
NP EN ISO 9001:2008 certified by TUV Rheinland

Burning classification - EN 13501-1:2010 - Bfl-s1

Luxury Class - LC 5 (Prestige)

HANDWOVEN RUGS

BOTTOM LINE - HANDWOVEN COLLECTION
By Frankly Amsterdam



MATERIAL STUDY



BOTTOM LINE 5006

Handwoven
100% Wool
8 mm
6 Standard colors, custom colors from our Wool color box
Any length possible with maximum width 5 meters

RUG SPECIFICATIONS
Pile: 100% Wool
Yarn origin: Europe, New Zealand
Latex: Luxury contract latex
Backing: 100% pes

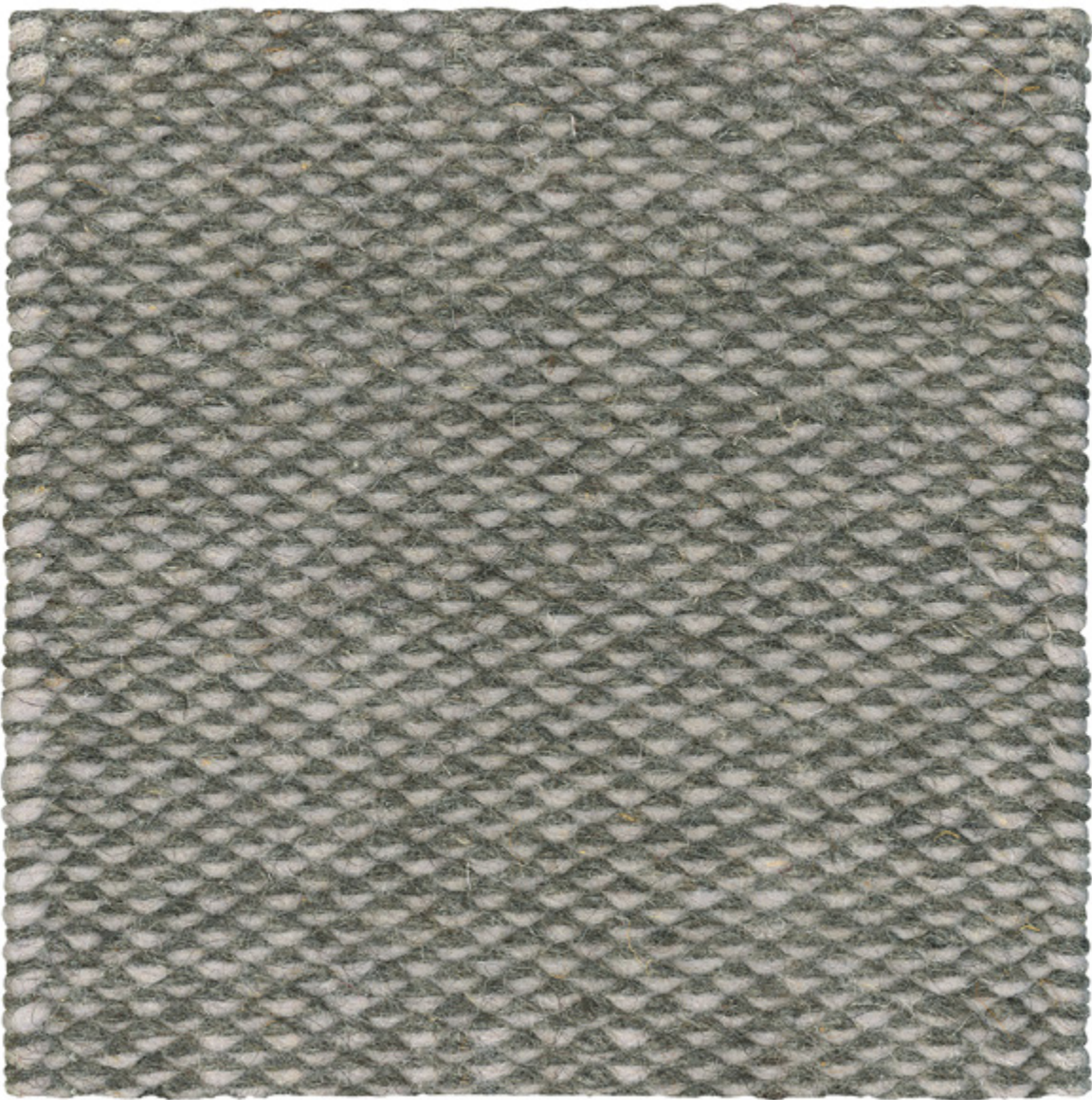
ABOUT WOOL
+ Our Wool yarn is recovered strictly from sheep living in Europe and New Zealand.
+ Wool fibers are completely biodegradable.
+ Wool is a renewable product. After the sheering of the sheep, their Wool fleece just grows back. In fact, the sheep needs to be sheered for their own well-being.
+ The sheering of the sheep is done in an animal friendly manner.
+The dyeing of our wool yarn is 100% ecological.

CERTIFICATES
NP EN ISSO 9001:2008 certified by TUV Rheinland
Burning classification - EN 13501-1:2010 - Bfl-s1
Luxury Class - LC 5 (Prestige)

EAGLE EYE - HANDWOVEN COLLECTION
By Frankly Amsterdam



MATERIAL STUDY



EAGLE EYE 5104

Handwoven
100% Virgin Wool
8 mm

7 Standard colors, custom colors from our Wool color box
Any length possible with maximum width 5 meters

RUG SPECIFICATIONS

Pile: 100% Wool
Yarn origin: Europe, New Zealand
Latex: Luxury contract latex
Backing: 100% pes

ABOUT WOOL

- + Our Wool yarn is recovered strictly from sheep living in Europe and New Zealand.
- + Wool fibers are completely biodegradable.
- + Wool is a renewable product. After the sheering of the sheep, their Wool fleece just grows back. In fact, the sheep needs to be sheered for their own well-being.
- + The sheering of the sheep is done in an animal friendly manner.
- +The dyeing of our wool yarn is 100% ecological.

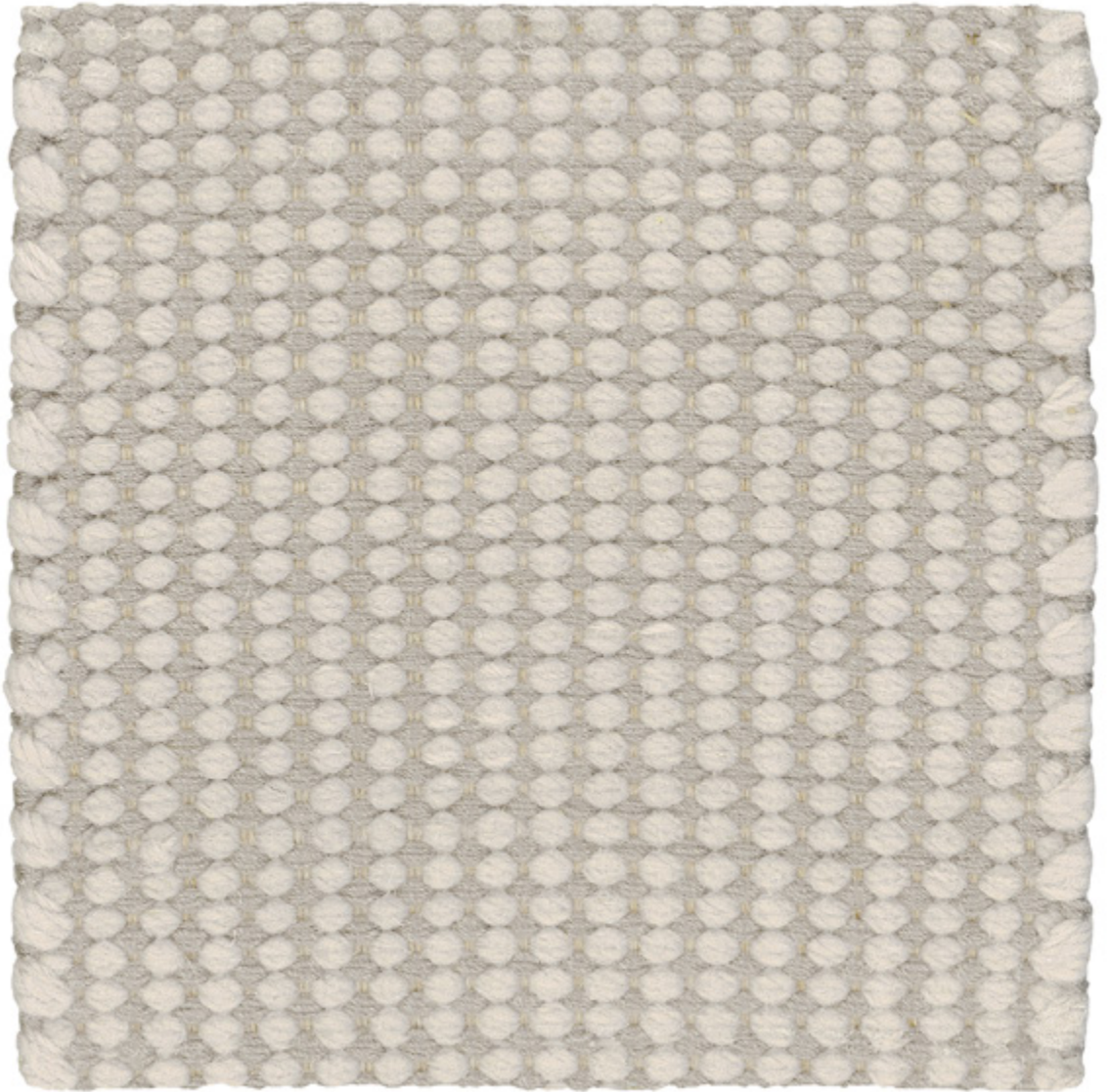
CERTIFICATES

NP EN ISSO 9001:2008 certified by TUV Rheinland
Burning classification - EN 13501-1:2010 - Bfl-s1
Luxury Class - LC 5 (Prestige)

MILE STONE - HANDWOVEN COLLECTION
By Frankly Amsterdam



MATERIAL STUDY



MILE STONE 4901

Handwoven
50% Wool, 50% Thick Eucalyptus
8 mm
6 Standard colors, custom colors from our Wool and Eucalyptus color box
Any length possible with maximum width 5 meters

RUG SPECIFICATIONS
Pile: 50% Wool, 50% Thick Eucalyptus
Yarn origin: Europe, New Zealand
Latex: Luxury contract latex
Backing: 100% pes

ABOUT WOOL
+ Our Wool yarn is recovered strictly from sheep living in Europe and New Zealand.
+ Wool fibers are completely biodegradable.
+ Wool is a renewable product. After the sheering of the sheep, their Wool fleece just grows back. In fact, the sheep needs to be sheered for their own well-being.
+ The sheering of the sheep is done in an animal friendly manner.
+The dyeing of our wool yarn is 100% ecological.

ABOUT EUCALYPTUS
+ It is one of the most sustainable processes of fiber-production to this day.
+ Woodpulp comes from European forests that are strictly managed according to FSC certificate.
+ The Eucalyptus fiber is completely biodegradable.
+ The land used for Eucalyptus is unsuitable for food crops, so there's no competition with the food-industry.
+ The production of Eucalyptus uses only 2,8% water compaired to the production of cotton.
+ The production process of Eucalyptus is a nearly closed loop process, where the the water involved in the production is recycled during manufacturing, and the finishing agents are fully biodegradable.
+ The dyeing of the Eucalyptus yarn is 100% ecological.

CERTIFICATES
NP EN ISSO 9001:2008 certified by TUV Rheinland
Burning classification - EN 13501-1:2010 - Cfl-s1
Luxury Class - LC 5 (Prestige)
Forest Stewardship Council (FSC) certified

CONTRACT

DONE DEAL - CONTRACT COLLECTION
By Frankly Amsterdam



MATERIAL STUDY



DONE DEAL 7002

Tufted
50% Wool, 50% Eucalyptus
12 mm

9 Standard colors, custom colors available on request
For wall to wall use from 24 m²

RUG SPECIFICATIONS

Pile: 100% Wool
Yarn origin: Europe, New Zealand
Backing: P.P and Latex
Latex: Luxury contract latex

ABOUT WOOL

- + Our Wool yarn is recovered strictly from sheep living in Europe and New Zealand.
- + Wool fibers are completely biodegradable.
- + Wool is a renewable product. After the sheering of the sheep, their Wool fleece just grows back. In fact, the sheep needs to be sheered for their own well-being.
- + The sheering of the sheep is done in an animal friendly manner.
- + The dyeing of our wool yarn is 100% ecological.

ABOUT EUCALYPTUS

- + It is one of the most sustainable processes of fiber-production to this day.
- + Woodpulp comes from European forests that are strictly managed according to FSC certificate.
- + The Eucalyptus fiber is completely biodegradable.
- + The land used for Eucalyptus is unsuitable for food crops, so there's no competition with the food-industry.
- + The production of Eucalyptus uses only 2,8% water compaired to the production of cotton.
- + The production process of Eucalyptus is a nearly closed loop process, where the the water involved in the production is recycled during manufacturing, and the finishing agents are fully biodegradable.
- + The dyeing of the Eucalyptus yarn is 100% ecological.

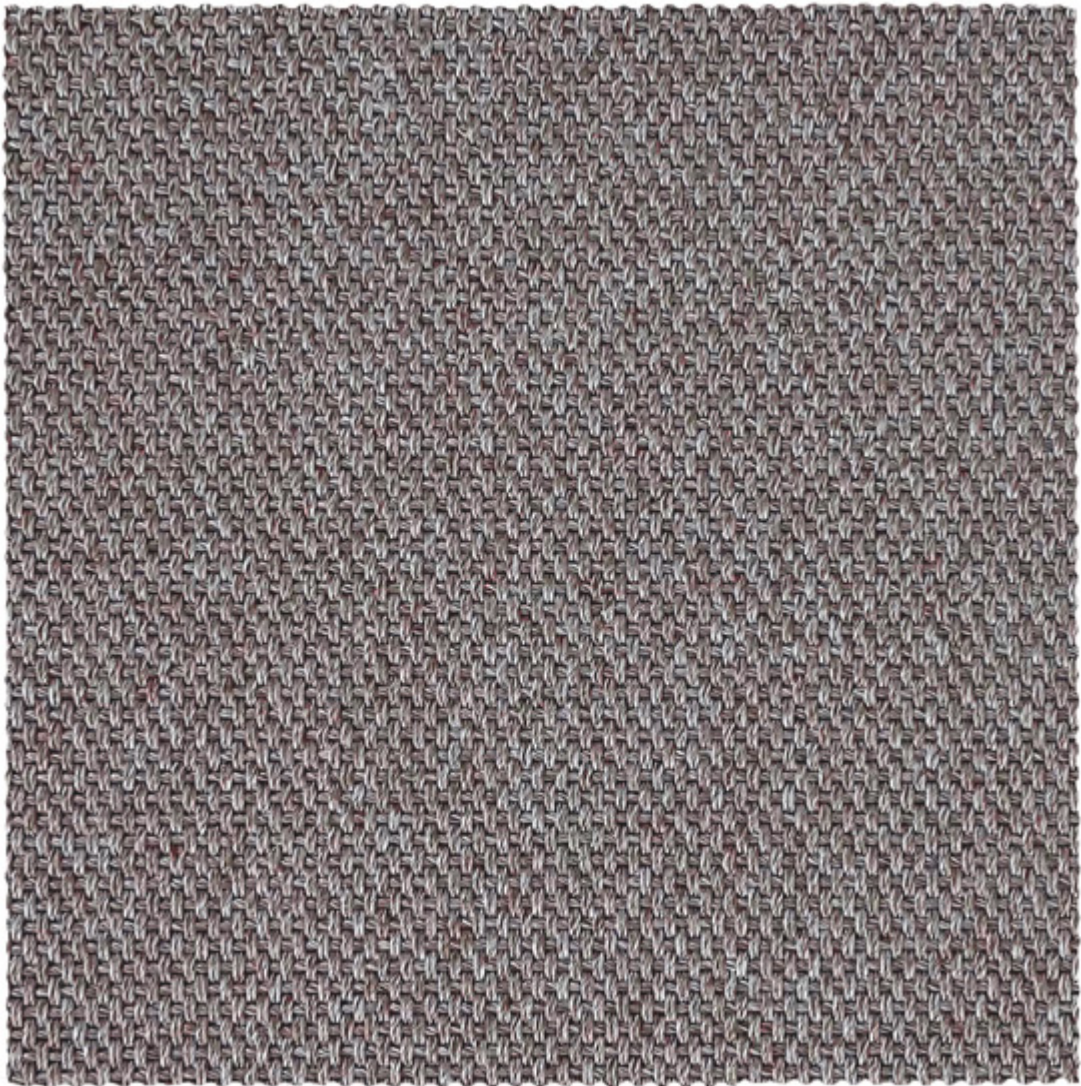
CERTIFICATES

Burning classification: Bfl-s1
Classification EN 1307:2014 and EN 14041:2004
This product fulfills the requirements for LEED certified buildings (EQC 4.3)
VOC-emission label A+

EASY GOING - CONTRACT COLLECTION
By Frankly Amsterdam



MATERIAL STUDY



EASY GOING 7405
Flatwoven
100% Recycled PET plastic
± 4,0 mm
4 Standard colors and 2 finishing options
For wall to wall use, finished as rug or stair runner
Suitable for indoor and outdoor use

RUG SPECIFICATIONS
Pile: 100% Recycled PET
Waste origin: Worldwide
Yarn origin: Europe
Backing: 100% P.P. + Latex
Latex: Luxury contract latex

ABOUT RECYCLED PET
+ Recycled PET is made of PET waste that is recovered from seas all over the world
+ Recycled PET can be recycled over and over

CERTIFICATES
Exemplary level for VOC Emissions
Burning classification - Dfl-s1
Classification EN 1307 and EN 14041

GOOD LIFE - CONTRACT COLLECTION
By Frankly Amsterdam



MATERIAL STUDY



GOOD LIFE 7302
Flatwoven
100% Recycled PET plastic
± 4,0 mm
4 Standard colors and 2 finishing options
For wall to wall use, finished as rug or stair runner
Suitable for indoor and outdoor use

RUG SPECIFICATIONS
Pile: 100% Recycled PET
Waste origin: Worldwide
Yarn origin: Europe
Backing: 100% P.P. + Latex
Latex: Luxury contract latex

ABOUT RECYCLED PET
+ Recycled PET is made of PET waste that is recovered from seas all over the world
+ Recycled PET can be recycled over and over

CERTIFICATES
Exemplary level for VOC Emissions
Burning classification - Dfl-s1
Classification EN 1307 and EN 14041

HIGH TIDE - CONTRACT COLLECTION
By Frankly Amsterdam



MATERIAL STUDY



HIGH TIDE 7103
Flatwoven
100% Recycled PET plastic
± 4,0 mm
4 Standard colors and 2 finishing options
For wall to wall use, finished as rug or stair runner
Suitable for indoor and outdoor use

RUG SPECIFICATIONS
Pile: 100% Recycled PET
Waste origin: Worldwide
Yarn origin: Europe
Backing: 100% P.P. + Latex
Latex: Luxury contract latex

ABOUT RECYCLED PET
+ Recycled PET is made of PET waste that is recovered from seas all over the world
+ Recycled PET can be recycled over and over

CERTIFICATES
Exemplary level for VOC Emissions
Burning classification - Dfl-s1
Classification EN 1307 and EN 14041

LAY OUT - CONTRACT COLLECTION
By Frankly Amsterdam



MATERIAL STUDY



LAY OUT 1603
Wilton woven
100% Wool
± 7 mm
4 Standard colors
For residential or soft contract use, finished as rug or runner
Suitable for indoor use

RUG SPECIFICATIONS
Pile: 100% Wool
Yarn origin: Europe & Australia
Backing: 100% Jute & Cotton

ABOUT WOOL
+ Wool fibers are completely biodegradable.
+ Wool is a renewable product. After the sheering of the sheep, their Wool fleece just grows back. In fact, the sheep needs to be sheered for their own well-being.
+ The herds that supply this wool comply with all animal welfare requirements as established by current European legislation.
+ Due to the centralized local supply chain there is a short time between the shearing and washing from the wool, maintaining the best properties of the wool.

CERTIFICATES
EN 1307:2014
Burning classification Bfls1
GOTS certificate
OEKO-TEX standard

LINE UP - CONTRACT COLLECTION
By Frankly Amsterdam



MATERIAL STUDY



LINE UP 1703
Wilton woven
100% Wool
± 7 mm
4 Standard colors
For residential or soft contract use, finished as rug or runner
Suitable for indoor use

RUG SPECIFICATIONS
Pile: 100% Wool
Yarn origin: Europe & Australia
Backing: 100% Jute & Cotton

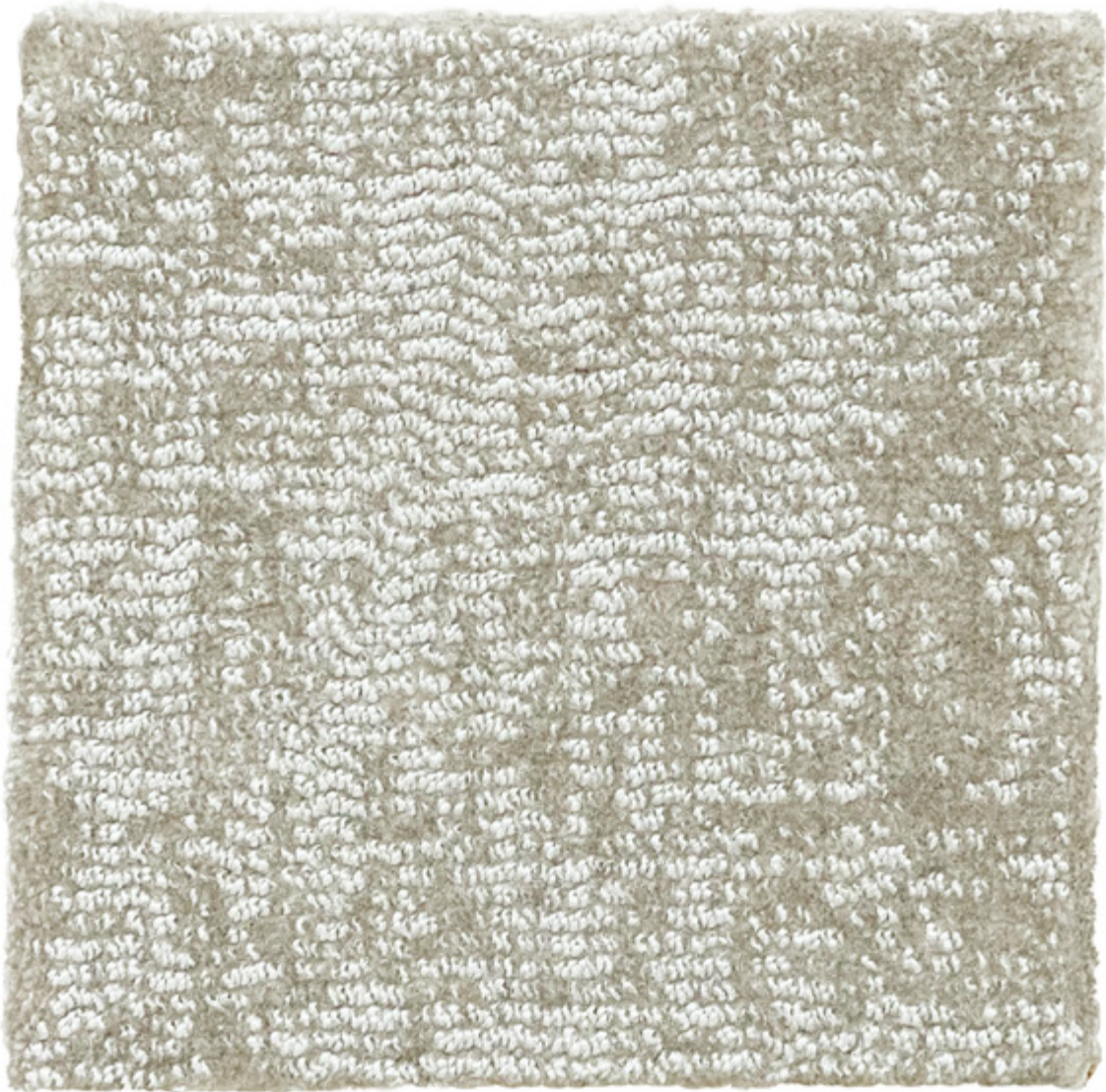
ABOUT WOOL
+ Wool fibers are completely biodegradable.
+ Wool is a renewable product. After the sheering of the sheep, their Wool fleece just grows back. In fact, the sheep needs to be sheered for their own well-being.
+ The herds that supply this wool comply with all animal welfare requirements as established by current European legislation.
+ Due to the centralized local supply chain there is a short time between the shearing and washing from the wool, maintaining the best properties of the wool.

CERTIFICATES
EN 1307:2014
Burning classification Bfls1
GOTS certificate
OEKO-TEX standard

ON RETURN - CONTRACT COLLECTION
By Frankly Amsterdam



MATERIAL STUDY



ON RETURN 6002
Machine woven
100% Recycled plastic
9 mm (11 mm including backing)
12 Standard colors, custom colors available on request
For wall to wall use or finished as rug

RUG SPECIFICATIONS
Pile: 100% Recycled plastic
Yarn origin: Europe
Backing: 100% Jute + Latex
Latex: Luxury contract latex

ABOUT RECYCLED PLASTIC
+ Recycled plastic is made from fishing nets, fabric scraps, carpet flooring and industrial plastic
+ Recycled plastic can be recycled endlessly
+ After recycling, this recycled nylon is exactly the same as virgin fossil-based nylon

CERTIFICATES
Exemplary level for VOC Emissions
Burning classification - Cfl-s1
Classification EN 1307:2014 and EN 14041:2004
Cradle-to-Cradle Gold
STANDARD 100 by OEKO-TEX

OUT LINE - CONTRACT COLLECTION
By Frankly Amsterdam



MATERIAL STUDY



OUT LINE 1802
Wilton woven
100% Wool
± 7 mm
4 Standard colors
For residential or soft contract use, finished as rug or runner
Suitable for indoor use

RUG SPECIFICATIONS
Pile: 100% Wool
Yarn origin: Europe & Australia
Backing: 100% Jute & Cotton

ABOUT WOOL
+ Wool fibers are completely biodegradable.
+ Wool is a renewable product. After the sheering of the sheep, their Wool fleece just grows back. In fact, the sheep needs to be sheered for their own well-being.
+ The herds that supply this wool comply with all animal welfare requirements as established by current European legislation.
+ Due to the centralized local supply chain there is a short time between the shearing and washing from the wool, maintaining the best properties of the wool.

CERTIFICATES
EN 1307:2014
Burning classification Bfls1
GOTS certificate
OEKO-TEX standard

ROLL OVER - CONTRACT COLLECTION
By Frankly Amsterdam



MATERIAL STUDY



ROLL OVER 6101
Machine woven
100% Wool
3 mm (4 mm including backing)
6 Standard colors
For wall to wall use or finished as rug

RUG SPECIFICATIONS
Pile: 100% Wool
Yarn origin: Europe, New Zealand
Backing: P.P and Latex
Latex: Luxury contract latex

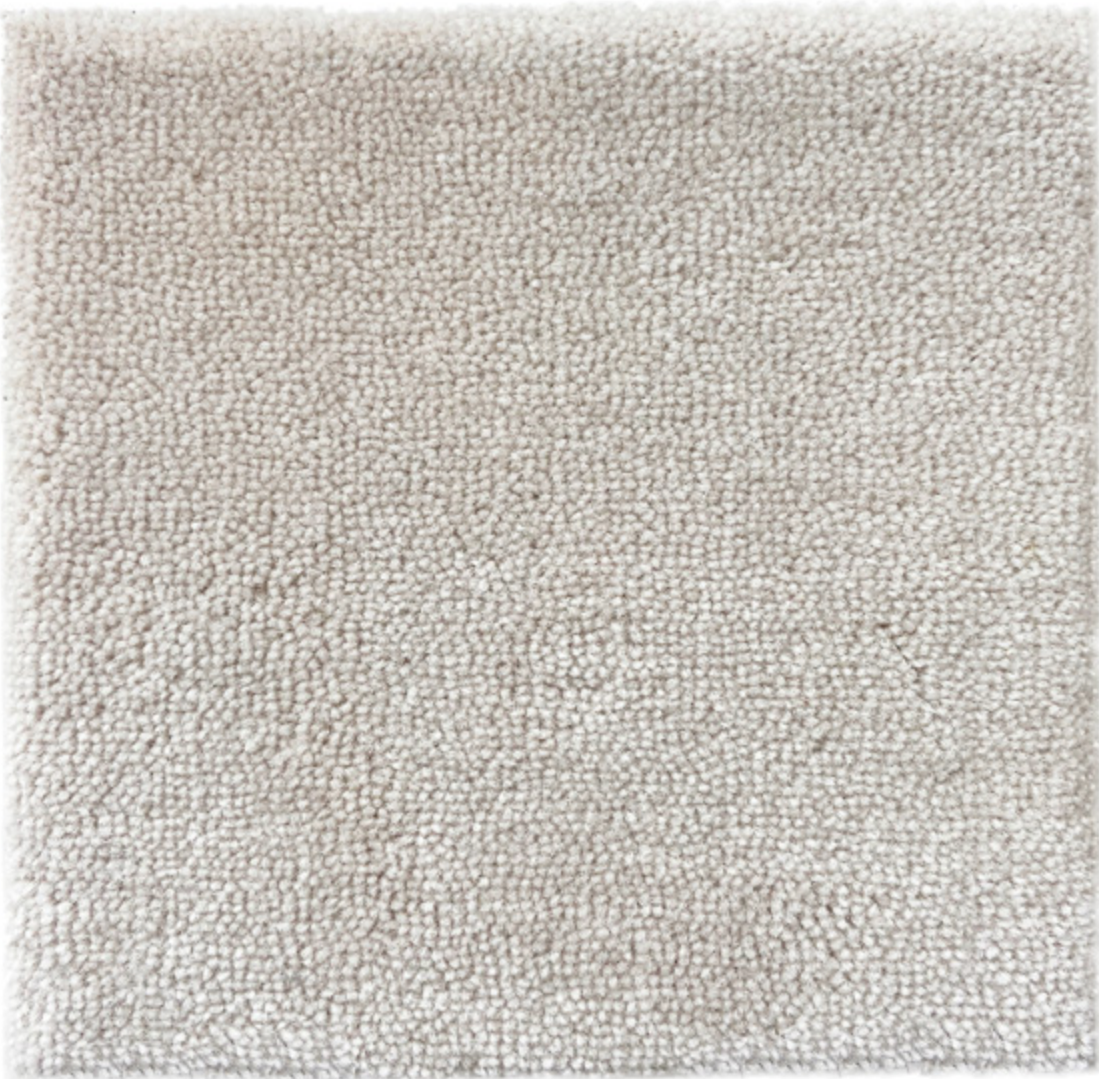
ABOUT WOOL
+ Our Wool yarn is recovered strictly from sheep living in Europe and New Zealand.
+ Wool fibers are completely biodegradable.
+ Wool is a renewable product. After the sheering of the sheep, their Wool fleece just grows back. In fact, the sheep needs to be sheered for their own well-being.
+ The sheering of the sheep is done in an animal friendly manner.
+The dyeing of our wool yarn is 100% ecological.

CERTIFICATES
Burning classification: Bfl-s1
Classification EN 1307:2014 and EN 14041:2004
This product fulfills the requirements for LEED certified buildings (EQC 4.3)
VOC-emission label A+

STEP UP 9 - CONTRACT COLLECTION
By Frankly Amsterdam



MATERIAL STUDY



RUG SPECIFICATIONS
Pile: 100% Wool
Yarn origin: Europe, New Zealand
Backing: 100% Action back P.P.
Latex: Luxury contract latex

ABOUT WOOL
+ Our Wool yarn is recovered strictly from sheep living in Europe and New Zealand.
+ Wool fibers are completely biodegradable.
+ Wool is a renewable product. After the sheering of the sheep, their Wool fleece just grows back. In fact, the sheep needs to be sheered for their own well-being.
+ The sheering of the sheep is done in an animal friendly manner.
+The dyeing of our wool yarn is 100% ecological.

CERTIFICATES
Burning classification: Bfl-s1
Classification EN 1307:2014 and EN 14041:2004
This product fulfills the requirements for LEED certified buildings (EQC 4.3)
VOC-emission label A+

STEP UP 9 6302
Machine knitted
100% Pure New Wool
7 mm (9 mm including backing)
20 Standard colors, custom colors available on request
For wall to wall use or finished as rug

STEP UP 16 - CONTRACT COLLECTION
By Frankly Amsterdam



MATERIAL STUDY



STEP UP 16 6209
Machine knitted
100% Pure New Wool
14 mm (16 mm including backing)
9 Standard colors, custom colors available on request
For wall to wall use or finished as rug

RUG SPECIFICATIONS
Pile: 100% Wool
Yarn origin: Europe, New Zealand
Backing: 100% Action back P.P.
Latex: Luxury contract latex

ABOUT WOOL
+ Our Wool yarn is recovered strictly from sheep living in Europe and New Zealand.
+ Wool fibers are completely biodegradable.
+ Wool is a renewable product. After the sheering of the sheep, their Wool fleece just grows back. In fact, the sheep needs to be sheered for their own well-being.
+ The sheering of the sheep is done in an animal friendly manner.
+The dyeing of our wool yarn is 100% ecological.

CERTIFICATES
Burning classification: Bfl-s1
Classification EN 1307:2014 and EN 14041:2004
This product fulfills the requirements for LEED certified buildings (EQC 4.3)
VOC-emission label A+

FRANKLY
AMSTERDAM

CURTAINS

CLEAR DAY COLLECTION
By Frankly Amsterdam



MATERIAL STUDY



CLEAR DAY
100% linen
Curtain
Width 300 cm
Available in 3 standard colors

CURTAIN SPECIFICATIONS
Pile: 100% linen
Yarn origin: Europe
Type: Curtain
Weave direction: Turnable
Type: Sheer
Composition 100% LI
Colors: 3 standard: 8001-8003

Note:
+ dry cleaning is advised
+ due to the inherent imperfections in natural fibers, there may be a subtle variation in color tone and minor irregularities that are typical to linen and recycled materials
+ please note that this fabric is not suitable for roman blinds

CROWN JEWEL COLLECTION
By Frankly Amsterdam



CURTAIN



CROWN JEWEL
100% Recycled Cotton
Curtain
Width 140 cm
Available in 120 standard colors

RUG SPECIFICATIONS
Available as: Curtain
Roll width: 140 cm
Type: Curtain
Composition 100% CO
Colors: 120 standard colors available
Weight 800 gr/m²
Martindale: 100.000
Piling: 3

Note:
+ dry cleaning is advised
+ make sure that the nap of the velour fabric is oriented in the same direction when upholstering multiple products

ABOUT RECYCLED COTTON
+ High quality recycled cotton fibers made from pre- and post-consumer textile waste
+ Transparent supply chain

CERTIFICATES
Organic Cotton Standard (OCS)
Global Recycled Standard (GRS)
Higg Index: Higg Facility Social & Labor Module (FSLM),
Higg Facility Environmental Module (FEM)
STANDARD 100 by OEKO-TEX

DAY BREAK COLLECTION
By Frankly Amsterdam



CURTAIN



DAY BREAK
100% linen
Curtain
Width 300 cm
Available in 25 standard colors

CURTAIN SPECIFICATIONS
Available as: Curtain
Roll width: 300cm
Weave direction: Not turnable
Type: Curtain
Composition 100% LI
Colors: 25 standard: 2201 - 2225
Weight 791 gr/m1

Note:
+ Dry cleaning is advised
+ Due to the inherent imperfections in natural fibers,
there may be a subtle variation in color tone and minor
irregularities that are typical to linen.

FIRST SIGHT COLLECTION
By Frankly Amsterdam



MATERIAL STUDY



FIRST SIGHT
100% linen
Curtain
Width 330 cm
Available in 9 standard colors

CURTAIN SPECIFICATIONS
Available as: Curtain
Roll width: 330 cm
Weave direction: Turnable
Type: Sheer
Composition 100% LI
Colors: 9 standard: 1-9

Note:
+ dry cleaning is advised
+ due to the natural fibres used in this fabric a slight variation in color tone may occur
+ please note that this fabric is not suitable for roman blinds

FLAW LESS COLLECTION
By Frankly Amsterdam



CURTAIN



FLAW LESS
100% linen
Curtain
Width 295 cm
Available in 36 standard colors

CURTAIN SPECIFICATIONS
Available as: Curtain
Roll width: 295cm
Weave direction: Not turnable
Type: In-between
Composition 100% LI
Colors: 36 standard: 1901-1936
Weight 304 gr/m1

Note:
+ Dry cleaning is advised
+ Due to the inherent imperfections in natural fibers,
there may be a subtle variation in color tone and minor
irregularities that are typical to linen.

IN FLOW COLLECTION
By Frankly Amsterdam



CURTAIN



IN FLOW
100% linen
Curtain
Width 300 cm
Available in 2 standard colors

CURTAIN SPECIFICATIONS
Available as: Curtain
Roll width: 300 cm
Weave direction: Turnable
Type: In-between
Composition 100% LI
Colors: 2 standard: 8201,8202

Note:
+ only available per roll, not in cut length
+ dry cleaning is advised
+ due to the natural fibres used in this fabric
a slight variation in color tone may occur

MIND FULL - CURTAIN COLLECTION
By Frankly Amsterdam

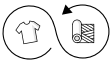


CURTAIN



MIND FULL

60% Recycled Cotton, 30% Polyester, 10% other recycled fibres
Curtain
Width 290 cm
Available in 9 standard colors



CURTAIN SPECIFICATIONS

Composition: 100% Recycled Cotton
Waste origin: Worldwide
Yarn origin: Europe

ABOUT RECYCLED COTTON

+ High quality recycled cotton fibers made from pre- and post-consumer textile waste
+ Transparent supply chain

CERTIFICATES

Organic Cotton Standard (OCS)
Global Recycled Standard (GRS)
Higg Index: Higg Facility Social & Labor Module (FSLM),
Higg Facility Environmental Module (FEM)
STANDARD 100 by OEKO-TEX

NEW DAY COLLECTION
By Frankly Amsterdam



CURTAIN



NEW DAY
100% linen
Curtain
Width 320 cm
Available in 5 standard colors

CURTAIN SPECIFICATIONS
Available as: Curtain
Roll width: 320 cm
Weave direction: Turnable
Type: In-between
Composition 100% LI
Colors: 5 standard: 0, 1, 11, 12, 21

Note:
+ dry cleaning is advised
+ due to the natural fibres used in this fabric a slight variation in color tone may occur

NICE VIEW COLLECTION
By Frankly Amsterdam



CURTAIN



NICE VIEW
100% linen
Curtain
Width 300 cm
Available in 3 standard colors

CURTAIN SPECIFICATIONS
Available as: Curtain
Roll width: 300 cm
Weave direction: Turnable
Type: Sheer
Composition 100% LI
Colors: 3 standard: 8101-8103

Note:
+ dry cleaning is advised
+ due to the natural fibres used in this fabric a slight variation in color tone may occur
+ please note that this fabric is not suitable for roman blinds

ON POINT COLLECTION
By Frankly Amsterdam



CURTAIN



ON POINT
70% Viscose, 30% linen
Curtain
Width 280 cm
Available in 2 standard colors

CURTAIN SPECIFICATIONS
Available as: Curtain
Roll width: 280 cm
Weave direction: Turnable
Type: Curtain, upholstery
Composition 70% CV, 30% LI
Colors: 2 standard: 8401, 8402

Note:
+ dry cleaning is advised
+ due to the inherent imperfections in natural fibers, there may be a subtle variation in color tone and minor irregularities that are typical to linen and recycled materials

RE COVER - CURTAIN COLLECTION
By Frankly Amsterdam

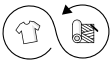


CURTAIN



RE COVER

60% Recycled Cotton, 30% Polyester, 10% other recycled fibres
Curtain
Width 280 cm
Available in 5 standard colors



CURTAIN SPECIFICATIONS

Composition: 100% Recycled Cotton
Waste origin: Worldwide
Yarn origin: Europe

ABOUT RECYCLED COTTON

+ High quality recycled cotton fibers made from pre- and post-consumer textile waste
+ Transparent supply chain

CERTIFICATES

Organic Cotton Standard (OCS)
Global Recycled Standard (GRS)
Higg Index: Higg Facility Social & Labor Module (FSLM),
Higg Facility Environmental Module (FEM)
STANDARD 100 by OEKO-TEX

STAY IN COLLECTION
By Frankly Amsterdam



CURTAIN



STAY IN
100% linen
Curtain
Width 300 cm
Available in 10 standard colors

CURTAIN SPECIFICATIONS
Available as: Curtain
Roll width: 300 cm
Weave direction: Turnable
Type: Curtain
Composition 100% LI
Colors: 10 standard: 1-10

Note:
+ dry cleaning is advised
+ due to different yarn dye lots a slight variation in color tone may occur

SURE THING COLLECTION
By Frankly Amsterdam



CURTAIN



SURE THING
100% linen
Curtain
Width 280 cm
Available in 4 standard colors

CURTAIN SPECIFICATIONS
Available as: Curtain
Roll width: 280 cm
Weave direction: Turnable
Type: Curtain
Composition 100% LI
Colors: 4 standard: 8301-8304

Note:
+ dry cleaning is advised
+ due to different yarn dye lots a slight variation in color tone may occur

TRUE STORY - CURTAIN COLLECTION
By Frankly Amsterdam



CURTAIN



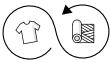
CURTAIN SPECIFICATIONS
Composition: 100% Recycled Cotton
Waste origin: Worldwide
Yarn origin: Europe

ABOUT RECYCLED COTTON
+ High quality recycled cotton fibers made from pre- and post-consumer textile waste
+ Transparent supply chain

CERTIFICATES
Organic Cotton Standard (OCS)
Global Recycled Standard (GRS)
Higg Index: Higg Facility Social & Labor Module (FSLM),
Higg Facility Environmental Module (FEM)
STANDARD 100 by OEKO-TEX

TRUE STORY

60% Recycled Cotton, 30% Polyester, 10% other recycled fibres
Curtain
Width 290 cm
Available in 4 standard colors



FRANKLY
AMSTERDAM

THROWS

COME OVER COLLECTION
By Frankly Amsterdam



THROW



COME OVER BLEND 01
Knitted
100% Undyed Eco Cashmere
140x180cm incl. 5cm knitted border
3 Standard colors from undyed eco Cashmere

THROW SPECIFICATIONS
Composition: 100% Eco Cashmere
Yarn origin: Europe

ABOUT UNDYED ECO CASHMERE
+ Our Cashmere yarn is recovered strictly from sheep living in Europe and traceable to the source.
+ The Cashmere fiber is completely biodegradable.
+ Cashmere is a renewable product. After the sheering of the goats, their Cashmere fleece just grows back. In fact, the goats needs to be sheered for their own well-being.
+ The sheering of the goats is done in an animal friendly manner.
+ The fibers of this throw are undyed cashmere fibers and naturally show the various colors of the Cashmere goat. This way, no harsh chemicals get in contact with the fiber.

FINE LINE COLLECTION
By Frankly Amsterdam



THROW



FINE LINE 01
Knitted
100% Cashmere
140x190cm with fringes
3 Standard colors, made with undyed eco Cashmere

THROW SPECIFICATIONS
Composition: 100% Eco Cashmere
Yarn origin: Europe

ABOUT UNDYED ECO CASHMERE
+ Our Cashmere yarn is recovered strictly from sheep living in Europe and traceable to the source.
+ The Cashmere fiber is completely biodegradable.
+ Cashmere is a renewable product. After the sheering of the goats, their Cashmere fleece just grows back. In fact, the goats needs to be sheered for their own well-being.
+ The sheering of the goats is done in an animal friendly manner.
+ Color 01, 02 and 03 are undyed cashmere fibers and naturally show the various colors of the Cashmere goat. This way, no harsh chemicals get in contact with the fiber.

SETTLE IN COLLECTION
By Frankly Amsterdam



THROW



SETTLE IN 01

Knitted
100% Cashmere
140x180cm including 10cm border
6 Standard colors (of which 3 colors from undyed eco Cashmere)
Also available as baby blanket, 70x90cm

THROW SPECIFICATIONS
Composition: 100% Eco Cashmere
Yarn origin: Europe

ABOUT UNDYED ECO CASHMERE
+ Our Cashmere yarn is recovered strictly from sheep living in Europe and traceable to the source.
+ The Cashmere fiber is completely biodegradable.
+ Cashmere is a renewable product. After the sheering of the goats, their Cashmere fleece just grows back. In fact, the goats needs to be sheered for their own well-being.
+ The sheering of the goats is done in an animal friendly manner.
+ Color 01, 02 and 03 are undyed cashmere fibers and naturally show the various colors of the Cashmere goat. This way, no harsh chemicals get in contact with the fiber.

SOFT SPACE COLLECTION
By Frankly Amsterdam



THROW



SOFT SPACE 06
Woven
100% Cashmere
140x190cm + 8cm fringes
6 Standard colors (of which 3 colors from undyed eco Cashmere)
Also available in dual color, 140x220cm + 8cm fringes

THROW SPECIFICATIONS
Composition: 100% Eco Cashmere
Yarn origin: Europe

ABOUT UNDYED ECO CASHMERE
+ Our Cashmere yarn is recovered strictly from sheep living in Europe and traceable to the source.
+ The Cashmere fiber is completely biodegradable.
+ Cashmere is a renewable product. After the sheering of the goats, their Cashmere fleece just grows back. In fact, the goats needs to be sheered for their own well-being.
+ The sheering of the goats is done in an animal friendly manner.
+ Color 01, 02 and 03 are undyed cashmere fibers and naturally show the various colors of the Cashmere goat. This way, no harsh chemicals get in contact with the fiber.

If you have any specific question, please feel free to contact us!
We are happy to be of service!

www.frankly.amsterdam
hello@frankly.amsterdam
+ 31 (0) 20 737 0818