

# User Guide

## UVMATIC™



This manual is suitable for the following machine models:

Product Code	Product Name	From	To
UVM0001	UVMATIC	01/11/2019	Current

**Document Revision Table**

Version	Notes	From	To
V1.0	Initial Release	19/11/2019	12/02/2020
V2.0	New images added.	13/02/2020	Current

**Installation Date & Bulb Changes**

Date	Action Performed	Next Lamp Change (12 months)	Lamp Strength Fitted
	Installation of UVMATIC		
	Lamp Changed		
	Lamp Changed		
	Lamp Changed		

## 1. Table of contents

1.	Table of contents.....	3
2.	Technical Specifications.....	4
3.	DISPOSING / RECYCLING.....	4
4.	Introduction .....	5
4.1	Document conventions.....	5
4.2	Intended use .....	5
4.3	Overview.....	6
4.4	The technology .....	6
4.5	Product features – an overview.....	6
5.	Precautions .....	7
5.1	Compliant use .....	7
5.2	Safety instructions.....	7
5.3	Electrical isolation point example .....	7
6.	Cleaning and caring for the UVMATIC.....	8
	Routine maintenance.....	8
7.	Cleaning and changing the lamp .....	9
8.	Troubleshooting .....	10
9.	INSTALLATION.....	11
9.1	Before installation.....	11
9.2	Installation location.....	12
9.3	Installation instructions.....	12
10.	Warranty .....	14
11.	Copyrights, disclaimer & trademarks .....	15
	Copyright Notice: .....	15

## 2. Technical Specifications

General	
Voltage	110-240Vac Version
Size	401 x 131 x 91 mm (15.8 x 5.2 x 3.6 inches)
Weight	960g (2.5lbs)
Power Cord	4m (13ft)
Main Connector	Hard wired into switched & fused Connection (3 Amp fuse)
Power Consumption	<16W
Operating Temperature	20°C – 40°C (68°F – 104°F) Operation of the unit outside of these ranges may affect overall performance
Humidity	0-90% RH noncondensing
Air Flow	20 lpm
UV Lamp Shelf Life	3 Years
UV Lamp Life	1 Year
Manufacturing Material	Aluminium

Replacement Lamp Specific Data			
Model	UVBULB10	UVBULB20	UVBULB30

**Note** – Replace lamp with exact specification that was fitted during original installation. If in any doubt on which lamp size to use, please contact DDC Dolphin direct.

## 3. DISPOSING / RECYCLING

DDC Dolphin is an ISO-9001-compliant company and is committed to environmental sustainability.

### Packaging

Packing materials can be recycled. In the interest of environmental protection, dispose of these materials properly.

### The unit and UV-lamp

If your **UVMATIC** needs to be disposed of, do so in accordance with the instructions pertaining to standard electrical equipment. UV-lamps contain small traces of mercury. Old, defective or broken lamps must be disposed of in accordance with laws related to the disposal of hazardous waste.



## 4. Introduction

The **UVMATIC** is an air purification system, designed to enable an odour-free, hygienic environment.

### 4.1 Document conventions

To avoid all personal injury and to ensure no physical/material damage to the unit, this document splits certain instructions into 2 risk levels.

#### *No. 1 Important instruction*



#### **ATTENTION!**

**Hazardous situation which can cause physical and material damage or lead to moderate serious injury.**

#### *No. 2 Critical instruction*



#### **WARNING**

**Hazardous situation which can cause serious/ fatal injury.**

### 4.2 Intended use



**Failure to comply with the instructions and recommendations contained within this guide may impair the safe operation and reliability of the machine. It may also invalidate the warranty of the UVMATIC unit.**



**This machine should only be used for the purpose for which it was designed.**

### 4.3 Overview

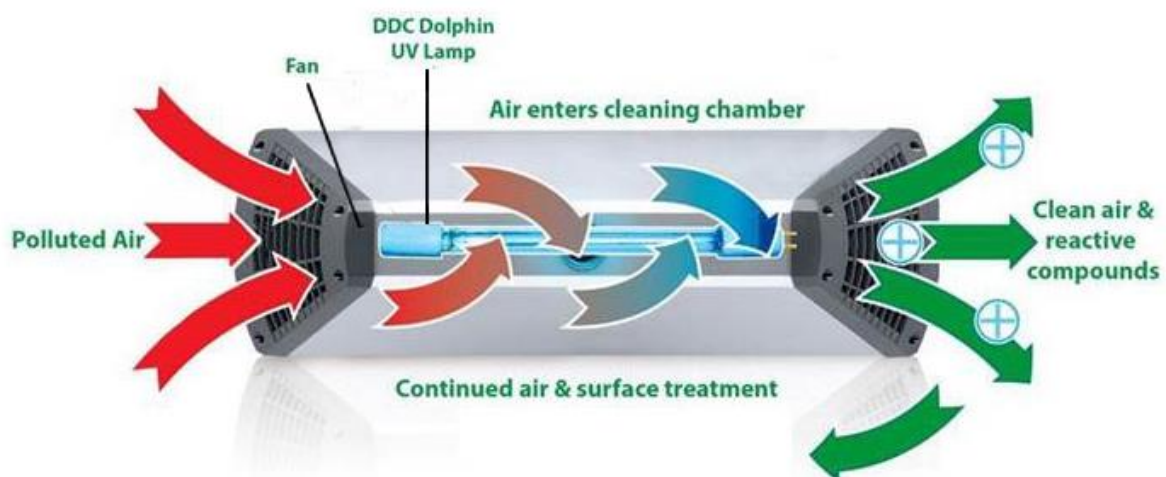
When correctly installed and properly used, the **UVMATIC** enables an odour-free, hygienic, environment.

- The **UVMATIC** does not mask odours with chemicals such as those utilised in deodorisers – it removes the odours.
- The **UVMATIC** significantly diminishes bacteria and other harmful micro-organisms on surfaces and in the air.
- The **UVMATIC** is the result of extensive research and sustained product development.
- It has been demonstrated that the **UVMATIC** is highly effective and safe to use and fully complies with the criteria of the world's most respected certification bodies.
- Every **UVMATIC** unit has undergone a strict quality-control regime. However, should the unit malfunction, follow the instructions in the Troubleshooting section of this manual. If the problem persists, please contact us.
- The **UVMATIC** is designed to be user-friendly with a high degree of functionality ease of operation and simple installation the primary considerations.

### 4.4 The technology

As air enters the unit, it is channelled into the air purification chamber. In the chamber, the air is exposed to intense levels of germicidal, ultraviolet light that destroys micro-organisms. The powerful wavelengths contained in the UV lamp react with the gaseous contents of the air to produce a purifying plasma that contains reactive oxygen species such as atomic oxygen, hydroxyl radicals and ozone, which destroy bacteria, viruses, fungi, yeast, mould, algae, and other harmful micro-organisms (as well as unpleasant odours).

### 4.5 Product features – an overview



## 5. Precautions

### 5.1 Compliant use



Failure to read and comply with the instructions in this manual may result in incorrect operation or damage to the UVMATIC

- ! Do not override any of the safety features of this **UVMATIC**, doing so may damage the **UVMATIC**.

### 5.2 Safety instructions

- This machine should only be used for the purpose for which it was designed.
- Always follow instructions detailed in the user manual.
- Do **NOT** look directly at the UV lamp when it is in operation.



The **UVMATIC** must have a continuous electrical supply to function. In the event of an emergency or problem with the **UVMATIC**, use the electrical cut off device to isolate it from the mains supply.

### 5.3 Electrical isolation point example



## 6. Cleaning and caring for the UVMATIC

### Routine maintenance



#### WARNING

**Disconnect the device from the power-supply network before cleaning or servicing using the mains isolator switch.**

Maintaining the **UVMATIC** is very simple. The only serviceable/changeable component is the UV lamp. If the device is in a dusty or smoke-filled area, it is recommended that the UV lamp be cleaned every three months. This will significantly lengthen the life of the UV lamp. The UV lamp must be changed once a year in order to ensure maximum functionality and efficiency.



**The UV lamp must be allowed to cool down before cleaning.**



**The UV lamp must be replaced by a maintenance mechanic or appropriately qualified person.**



#### WARNING

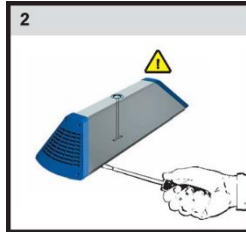
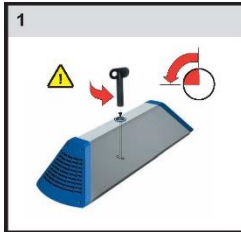
**When servicing, disconnect the unit from the power supply using the isolation switch. Avoid touching the lamp's glass element. Handle the lamp by its white end caps only.**

The DDC Dolphin UV lamp is intended to produce photo plasma and is not suitable for illumination.

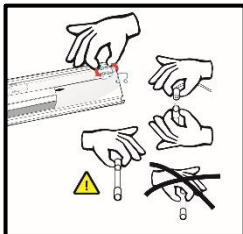


## 7. Cleaning and changing the lamp

1. Turn the power **OFF** by using the mains isolator switch.
2. Open the unit in accordance with the installation instructions shown below:

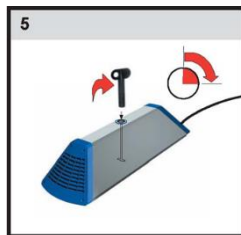
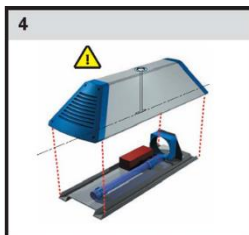


3. Ensure that the UV lamp has cooled down. Extract the UV lamp from its retaining clips (see illustration below).



When handling the UV lamp, avoid touching the glass element with exposed fingers.

4. **Cleaning the UV lamp:** Clean the UV lamp with a soft cloth and an appropriate cleansing solvent (i.e. isopropyl alcohol). Reinsert the UV-bulb.
5. **Changing the lamp:** Insert a new UV lamp (only use original DDC Dolphin UV lamp's and replace with the same specification). Use of any non DDC Dolphin lamps', will void the warranty.
6. Close the unit in accordance with the installation instructions shown below.



7. Turn the power **ON** by using the mains isolator switch.
8. When the UV lamp has been replaced, dispose of the old UV lamp in accordance with local regulations pertaining to hazardous waste disposal. UV lamp contain small traces or mercury.

Both regular cleaning and maintenance routines are essential for the correct operation of this device. Failure to implement both cleaning and periodic maintenance will result in decreased efficiency, poor performance, and avoidable wear and tear.

## 8. Troubleshooting

Symptom	Potential cause	Action
The fan works, but the UV lamp is not on.	UV lamp faulty or incorrectly installed.	<p>Check the local electrical switch is <b>OFF</b>.</p> <p>Check that the UV lamp is properly inserted into its socket.</p> <p>The UV lamp may be defective. Replace the UV lamp with a new one.</p>
The UV lamp and the fan do not function.	Power is off or blown fuse.	<p>Check that the device is switched <b>ON</b>.</p> <p>Check that the fused outlet functions properly.</p> <p>Check that the fuse has not blown.</p>
The airflow is weak.	Blocked intake vent or faulty fan.	<p>Check to see if the grill is clogged with dust or debris.</p> <p>Check for blockages to the incoming or outgoing air flow.</p> <p>Check that the fan functions properly.</p>

## 9. INSTALLATION



**Installation must be carried out by a maintenance mechanic or appropriately qualified person only.**



**High voltage inside of unit.**



### **WARNING**

**These procedures should only be performed by a qualified electrician according to national and local electricity codes. Supply power should be turned off when replacing components or checking connections. Never perform maintenance or cleaning while unit is powered on.**

### 9.1 Before installation

Inspect the device for any damage that may have occurred during transportation. If the unit has been damaged, do not connect it to the power supply or try to use it. In the event of damage, immediately inform DDC Dolphin. Check that the components are included in the package (some are inside the device):



- a. Cover
- b. Locking shank (also functions as an ON/OFF switch)
- c. Fan
- d. UV lamp
- e. Baseplate
- f. Power cord
- g. Key
- h. Screw (4)
- i. Rubber spacer (4)

If something is missing, please contact DDC Dolphin.

## 9.2 Installation location

The **UVMATIC** must be installed:

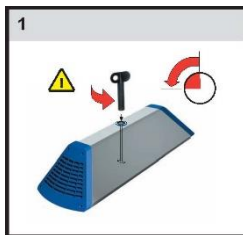
- on a wall or ceiling at a height of approximately 2 metres (7 feet).
- in a place where the air moves freely into and out of the device.
- in a place where it most effectively removes impurities from the air.
- such that it does not blow directly onto the face.
- such that it is within easy reach of the power isolation switch.

To gain maximum benefit from your **UVMATIC**, install it close to a fan or to the incoming air vent. The transmitting end should be kept away from windows, extractor fans/vents, etc. In this way the purifying plasma will be mixed most effectively with the air in the room.

## 9.3 Installation instructions

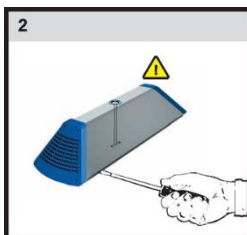
### Step 1

Ex-factory, the device is locked by default. To open the cover, insert the key and rotate it a quarter turn in an anticlockwise direction. Remove the key.



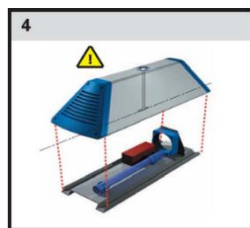
### Step 2

The cover is firmly attached to the baseplate. To remove it, insert a broad screwdriver or similar tool between the cover and baseplate and gently but firmly prise off the cover. The electronic components remain attached to the baseplate when the cover has been removed.



### Step 3

For mounting, there are four screw holes on the baseplate. The mounting kit comprises four screws and four rubber spacers to dampen resonance. Before fastening the screws, insert the spacers between the baseplate and the wall or ceiling.



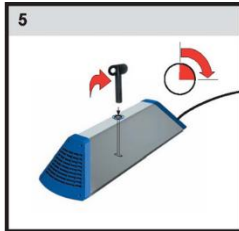
To maximise the efficiency, the outflow end (the non-corded end) of the unit should be directly facing the odour source(s) and the unit should be installed as close as possible to the ventilation shaft for the incoming airflow

#### Step 4

Ensure that the lower end of the locking shank is lengthwise so that it fits neatly into the hole in the baseplate and press down the cover to close it.

#### Step 5

Insert the key, turn it a quarter turn in a clockwise direction and remove it.



#### Step 6

The **UVMATIC** you are installing requires a permanent connection to the electrical supply and needs to be fitted into a fused switched isolator. The fuse size is 3 amp.

Once the unit has been professional installed by an electrician to the fused switched isolator, the machine can be switched **ON**.

The device will now start-up and the blue indicator light will turn **ON**.



#### Note

Install the unit so the power can be isolated before removing the cover for service.

The unit is not internally fused therefore, the mains supply circuit must be fused with a 3-amp rated fuse.

The unit is intended to operate continuously. Ensure the power supply is continuous and cannot be unintentionally switched off.

The un-terminated AC power cord installed on the unit conforms to the following IEC standard wire colour coding:

The unit's electrical connection to the mains supply must be done according to national and local electrical codes by a qualified electrician.

<b>NEUTRAL</b>
<b>Blue</b>
<b>PROTECTIVE EARTH</b>
<b>Yellow – Green</b>
<b>LINE</b>
<b>Brown</b>

## 10. Warranty

All DDC Dolphin products are carefully designed, manufactured, tested and inspected. Consequently, we undertake to replace or repair, free of charge, any part found to be defective in material or workmanship within the warranty period of the product.

The manufacturer's warranty starts on the date of delivery to the original purchaser of this product.

The provisions of this warranty are in lieu of any other written warranty, whether expressed or implied, written or oral, including any warranty of merchantability or fitness for a particular purpose. The manufacturer's maximum liability shall not exceed the actual purchase price paid by you for the product. In no event shall the manufacturer be liable for special, incidental, consequential or indirect damages. This warranty does not cover a defect that resulted from improper or unreasonable use or maintenance, accident, improper packing, or unauthorised tampering, alteration or modification as determined solely by us. This warranty is void if the label bearing the serial number has been removed or defaced.

This warranty is offered as an extra benefit and does not affect your statutory rights.

## 11. Copyrights, disclaimer & trademarks

### **Copyright Notice:**

Copyright © DDC Dolphin Limited (company number 02643023) (“Owner”), 2020.

### **Copyright Warning:**

The reproduction or transmission of all or part of this document, including all its content, schedules and appendices], whether by photocopying or storing in any medium by electronic means or otherwise, without the prior written consent of the Owner, is prohibited. The commission of any unauthorised act in relation to this document, including all its content, schedules and appendices may result in civil or criminal actions.

The Owner asserts its moral rights under the Copyright, Designs and Patents Act 1988 to be identified as the author of this document, including all its content, schedules and appendices.

### **Disclaimer:**

The content of this document, including all its content, schedules and appendices is provided for general information and illustrative purposes only. It is not intended to amount to advice on which you should rely.

While this document, including all its content, schedules and appendices has been prepared in good faith, the Owner makes no representations, warranties or guarantees (whether express or implied) that the content of this document, including all its content, schedules and appendices is accurate, complete or up-to-date and no responsibility or liability is or will be accepted by the Owner or by any of its officers, employees or agents in relation to the adequacy, accuracy, completeness or reasonableness of this document, including all its content, schedules and appendices All and any such responsibility and liability is expressly disclaimed.

No information set out, or referred to, in this document, including all its content, schedules and appendices shall form the basis of any contract. The Owner reserves the right to amend this document, including all its content, schedules and appendices at any time and gives no undertaking to provide the recipient with access to any additional information or to update this document, including all its content, schedules and appendices or to correct any inaccuracies in it which may become apparent.”

### **Trademarks:**

Panamatic®, Pulpmatic®, MicrobeSafe®, Incomatic®, UVMATIC® and Hygenex® are registered trademarks of DDC Dolphin Ltd.

# REDEFINING INFECTION CONTROL

**DDC Dolphin Ltd**  
The Fulcrum  
Vantage Way  
Poole  
BH12 4NU



**+44 (0) 1202 731555**



**info@ddcdolphin.com**



**www.ddcdolphin.com**