

LUIWIREP

LUIWIREP® 70 Instructions

July 15th, 2019

Step 1: Cleaning and grinding

Attention: Never damage unharmed fabric!



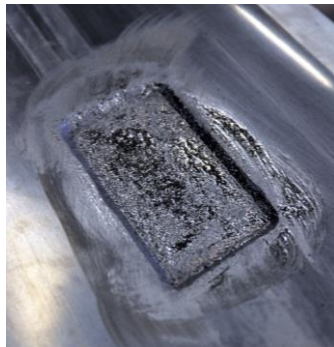
Clean the surface from loose material and dirt. Clean off oily contaminations with "LUTZE Cleaner".

Grind and roughen the area. The transition to the old material should be at least 45° in angle.

Brush off grinding dust.

Recommendation:
Fiber grinding discs, grain 24
Maximum grinder speed: 1.500 rpm

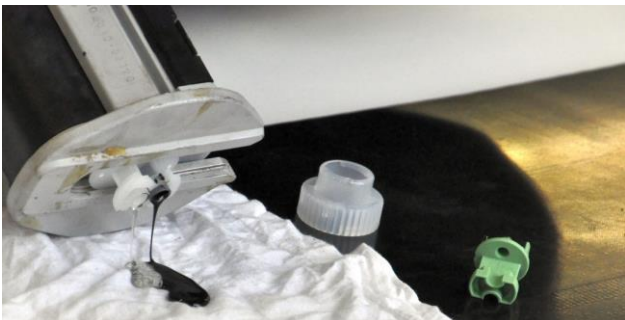
Step 2: Apply primer



Apply an evenly thin layer of "LUIWIREP® rubber primer" on the roughened area and let the primer dry for approx. 15 minutes*.

Please note:
For different surfaces other primers may be needed.
Contact us to find the best possible product for your application.

Step 3a: Prepare Cartridge



Push out some material without the mixing nozzle, to even out both pistons. Make sure both openings aren't plugged with hardened material.

Recommendation:
Use a cloth that can be thrown out. Make sure to always mix both components manually to allow hardening. LUIWIREP® can be disposed as domestic or commercial waste if hardened.

Step 3b: Attach mixing nozzle



Push on the mixing nozzle and secure it (click!).

400 ml cartridges: Use the original transparent ring
50 ml cartridges: Twist the grey cap on the nozzle

Before the next step make sure the repair spot is ready for the application. Prepare additional cartridges (step 3) and place them close by, if more than one is needed.

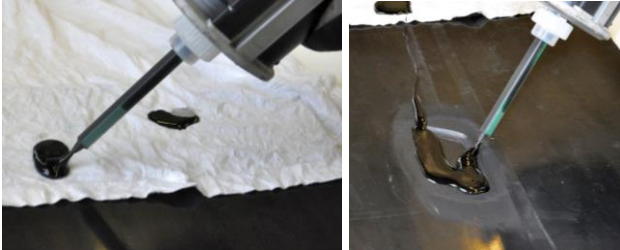
* The actual time will always depend on temperature, moisture level, thickness of the repair and other surrounding influences. All mentioned times can only be used as indicators.

LUIWIREP

LUIWIREP® 70 Instructions

July 15th, 2019

Step 4: Filling



LUWIREP® 70 must be processed quickly. If you stop application the risk of mixing failures increases rapidly. The nozzle will be sealed within seconds. If you need to stop the process, renew the mixing nozzle (step 3b) before continuing.

Start filling the mixing nozzle. Push out some material to ensure fully mixture of the material and proceed to the actual repair spot without interruption.

Material that will get on unprepared surfaces will be easy to remove after hardening.

Step 5: Curing and grinding



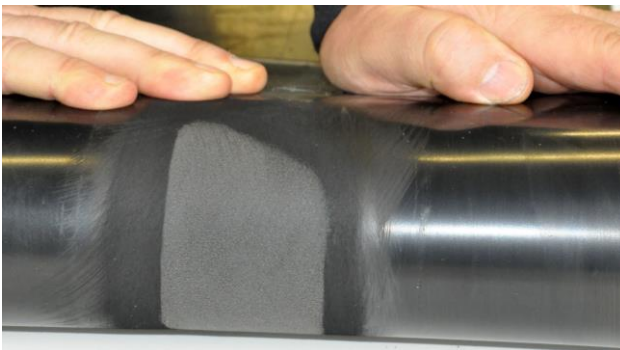
LUWIREP® 70 will create heat up to ~ 60 °C within the first minutes after application. It is grindable after the temperature cools down to room temperature (~ 20°C).

Recommendation:
Fiber grinding discs, grain 24
Maximum grinder speed: 1.500 rpm

Example:

At a 4 mm thick repair the hardened material will be grindable after 15 – 20 minutes*. If the dust doesn't appear dry, let the spot cool down for another 5 – 10 minutes*.

The finished repair spot



After the work has been finished, the repair is already strong enough to withstand "normal" stress.

Nearly 100 % of the final strength will be reached after 2 hours*.

Storage:

Store dry at room temperature. LUWIREP® cartridges must never experience freezing temperatures! Original cartridges can be stored in the undamaged aluminum bag up to 18 months after production date. After opening the material is still good for 6 months.

If there is still enough material left in a cartridge for your next repair, detach the mixing nozzle and screw the original plug back on for storage. When getting ready for the next repair, use a new mixing nozzle starting with Step 3a.

** The actual time will always depend on temperature, moisture level, thickness of the repair and other surrounding influences. All mentioned times can only be used as indicators.*