

# Split core current transformer

Model: SCT013-030

## Characteristic:

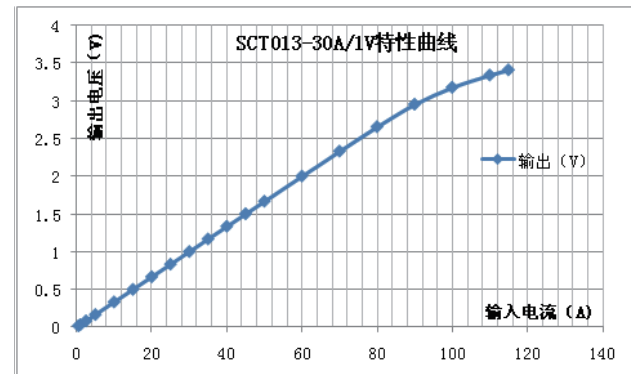
Opening size 13mmx13mm, Compatible to foreign products, leading wire 1 metre, standardΦ3.5 three core plug output, current & voltage two types of output. (Patent No. ZL 2015 3 0060067.X)



## Technical indicators:

Hanging installation, leading wire output  
 Fire resistance property: UL94-V0  
 Standard: GB1208-2006  
 Work temperature: -25°C ~ +70°C  
 Storage temperature: -30°C ~ +90°C  
 Work voltage: 660V  
 Frequency range: 50Hz-1KHz  
 Dielectric strength: 3.5KV 50Hz 1min

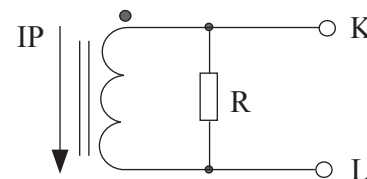
Characteristic curve in different load volt-ampere:



## Electric parameter:

Rated input(rms)	30	A
Max.Input	60	A
Rated output	1	V
Turns ratio		
Accuracy	± 1	%
Linearity	≤ 0.2	%
Phase error		
max:Sampling resistance		Ω
Weight	50	g

Wiring diagram:



Built-in with sampling resistance voltage output type

Outline size diagram(in mm):

