

# Split core current transformer

Model: SCT013-100

## Characteristic:

Opening size 13mmx13mm, Compatible to foreign products, leading wire 1 metre, standardΦ3.5 three core plug output, current & voltage two types of output. (Patent No. ZL 2015 3 0060067.X)



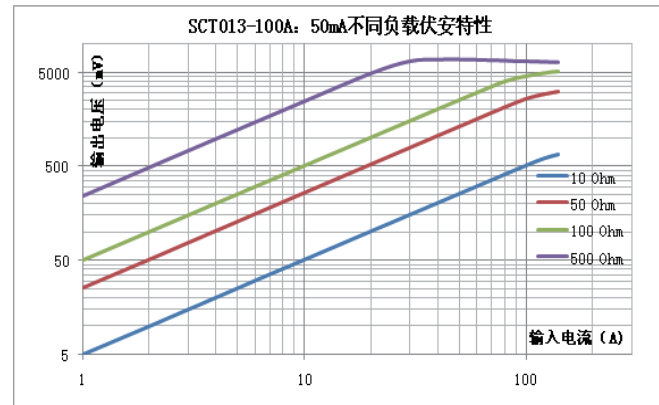
## Technical indicators:

Hanging installation, leading wire output  
 Fire resistance property: UL94-V0  
 Standard: GB1208-2006  
 Work temperature: -25°C ~ +70°C  
 Storage temperature: -30°C ~ +90°C  
 Work voltage: 660V  
 Frequency range: 50Hz-1KHz  
 Dielectric strength: 3.5KV 50Hz 1min

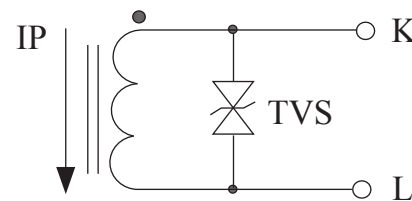
## Electric parameter:

Rated input(rms)	100	A
Max.Input	120	A
Rated output	50	mA
Turns ratio	1:2000	
Accuracy	±1	%
Linearity	≤0.2	%
Phase error		
max.Sampling resistance	10	Ω
Weight	50	g

## Characteristic curve in different load volt-ampere:



## Wiring diagram:



Built-in two-way protection diode current output type

## Outline size diagram(in mm):

