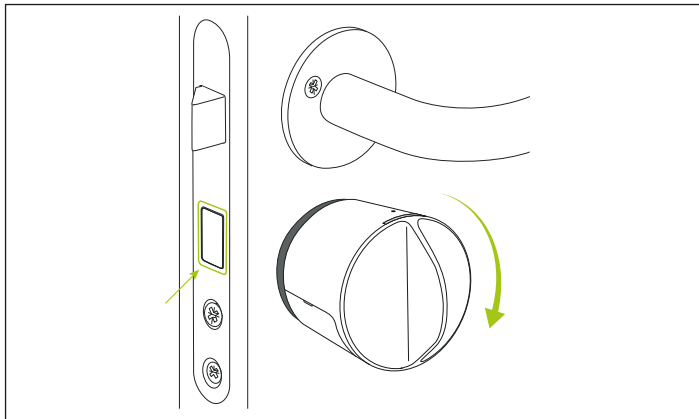


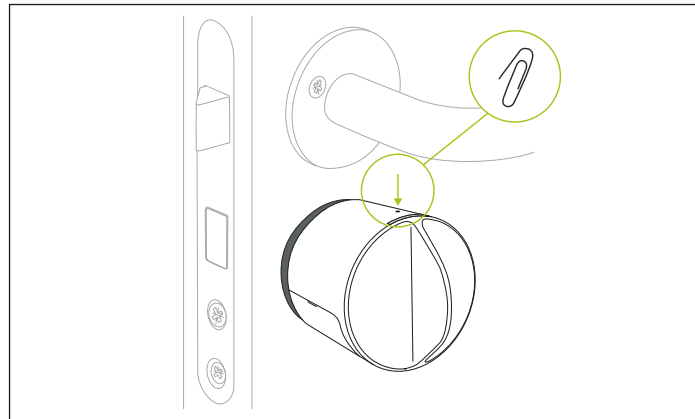
Automatic calibration of Danalock V3

Click command

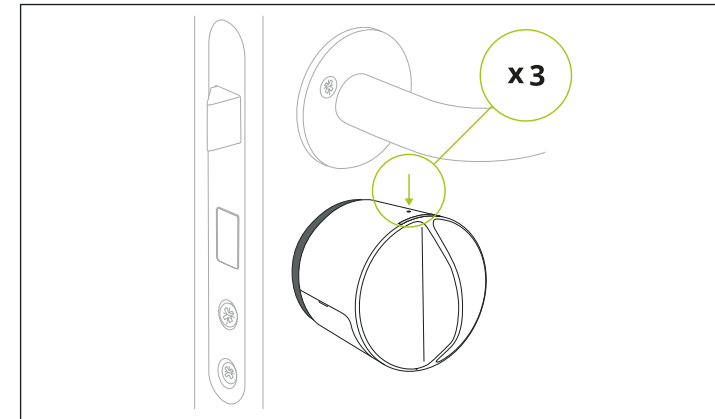
You can configure the Danalock V3 manually with the use of *click commands*. This guide will walk you through the configuration of *automatic calibration*.



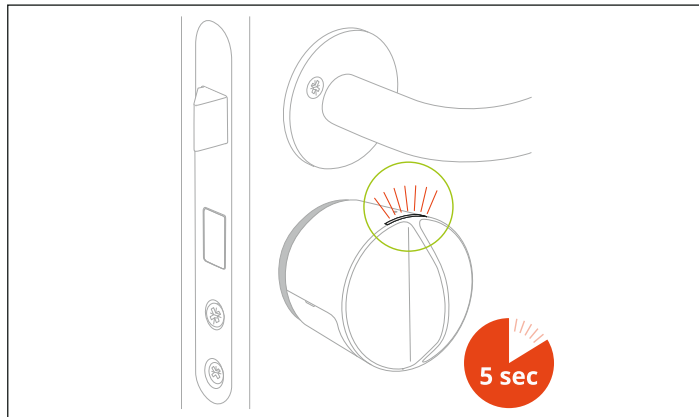
2) Make sure the door is unlocked. If it's not, turn the lock to unlocked position. Close the door.



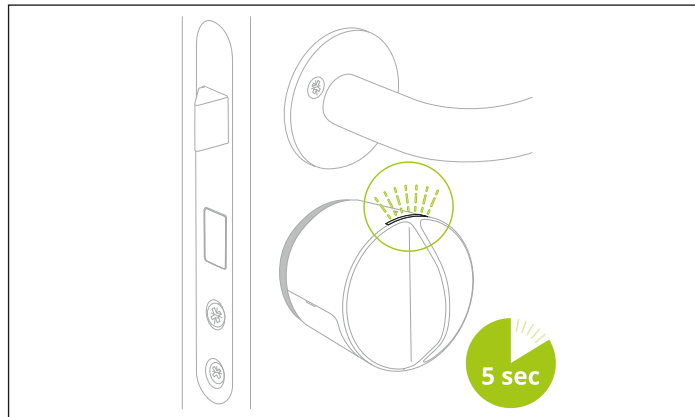
3) The *Click Command* configurations are executed via the small hole in the top of the Danalock V3. Use a paper clip or other suitable device to perform the clicks.



4) To activate the *automatic calibration* you have to click/press three times through the hole.



* if you make a wrong number of clicks, stop at a number where the LED doesn't light up and wait 5 sec. A red flash indicates the Danalock V3 has timed out. Try again.



5) After 5 sec the lock confirms the choice and the configuration will begin. During the setup the LED blinks *white*. It will stop blinking when the calibration is done.

Congratulations, the Danalock V3 has been calibrated!