



MCO Home

## MCO Home Glass Touch Switch GEN5 (2 Buttons)

SKU: MCOETPS412



### Quickstart

This is a **Binary Power Switch** for **XXXQFrequencyName**. To run this device please connect it to your mains power supply. **A** This device is a Z-Wave Actuator. To include or exclude the device you only need to press and hold any key for 8 seconds.

### Important safety information

Please read this manual carefully. Failure to follow the recommendations in this manual may be dangerous or may violate the law. The manufacturer, distributor and seller shall not be liable for any loss or damage resulting from failure to comply with the instructions in this manual or any other material. equipment only for its intended purpose. Follow the disposal instructions. Do not dispose of electronic equipment or batteries in a fire or near open heat sources.

### Product Description

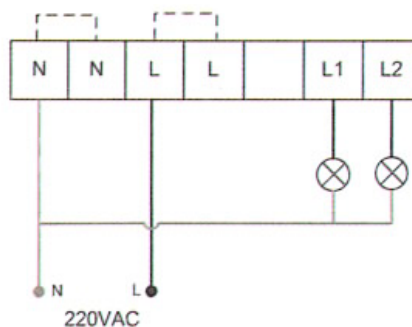
The TPS412 by MCO Home is a wall switch with 2 integrated switch relays. The relays can be controlled both with the touch switches, which are integrated into the glass surface, and via Z-Wave commands. The relays can switch two loads with up to 1,100 watts each. Beside local switching the device can be used to control two groups of directly associated devices. A blue LED on every button indicates the switching status.

The wall switch can be easily connected to an electrical load without installing a flush mounted module separately. The relays are located inside a module which is directly connected to the glass touch button. With that MCO Home wall switch you can replace any switch insert or toggle switch. The wall switch is mounted on any flush box.

With the stylish glass wall switches by MCO Home you can easily integrate your already installed lights into your home automation network. Without installing any new cable, you can switch your lighting as usual via wall switch – but thanks to Z-Wave technology also via remote control, smartphone or sensor-controlled automation.

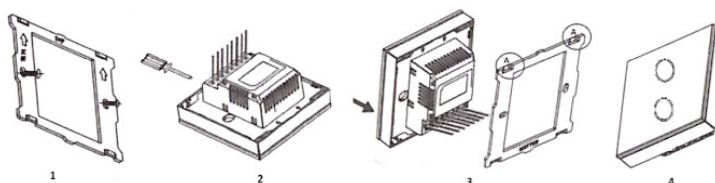
### Installation

**Important:** Please make sure you have cut off power supply before you start to install the device.



- Connect Hot Line to "L"
- Connect Neutral Line to "N"
- Connect Load wire to "L1"

- Connect Load wire to "L2"



1. Remove the steel frame from the device, and secure it onto the junctions box with two screws.
2. Insert all wires into the right terminals and tighten screws.
3. Attach the wired device on "A" points of the steel frame as shown first, and then push the whole device into junction box.
4. Confirm the device is well mounted, power on and it is ready to operate.

## Product Usage

The actuator is operated by the local switching Touch panels or wirelessly using Z-Wave commands.

### Scene Function:

#### 1. Scene Response Device

As a Scene Response device, it supports "Scene Activation CC" and "Scene Actuator Conf CC", which make the device can be added into any scene, and supports 255 Scene ID. In parameter item 0x10, users can configure which external switch button will respond the scene CC.

#### 2. Scene Activate Device

As a Scene Activate device, when pressing the switch button, it will send "Scene Activation" to Association Group 1 (normally associated to the gateway) to activate corresponding scenes, and the scene ID is set by configuration parameter. This function is disabled by default, to activate it, please refer to the configuration parameter table item 17-19.

#### 3. Central Scene Activate Device

As a Central Scene Activate device, it supports "Central Scene CC". When pressing the switch button, it will send "Central Scene Notification" to Association Group 1 (normally associated to gateway). This function is always being activated and cannot be disabled.

<b>Reset to factory default</b>	XXXResetDescription
<b>Inclusion</b>	To include the device you only need to press and hold any key for 8 seconds.
<b>Exclusion</b>	To exclude the device you only need to press and hold any key for 8 seconds.
<b>NIF</b>	XXXNIF
<b>Wakeup</b>	XXXWakeupDescription
<b>Protection</b>	XXXProtection
<b>FirmwareUpdate</b>	XXXFirmwareUpdate
<b>SetAssociation</b>	XXXSetAssociation

### Association Groups:

Group Number	Maximum Nodes	Description
1	1	Lifeline
2	5	Associate with Key 1 - send Basic Set Command to associated devices
5	5	Associate with Key 2 - send Basic Set Command to associated devices

## Configuration Parameters

### Parameter 2: Switch state saved or not when power failure

Size: 1 Byte, Default Value: 1

Setting	Description
0	not saved, switch will be off when powered again
1	saved, switch will keep the same state when powered again

### Parameter 3: ALL ON/ALL OFF

Size: 1 Byte, Default Value: 255

Setting	Description
0	forbid ALL ON, forbid ALL OFF
1	forbid ALL ON, allow ALL OFF
2	allow ALL ON, forbid ALL OFF
255	allow ALL ON, allow ALL OFF

### Parameter 4: LED Backlit brightness level

Size: 1 Byte, Default Value: 10

Setting	Description
0	LED disabled
1 - 10	Min level-Max level

### Parameter 5: Key Mode

*This function works for corridor or stairwell situation.*

Size: 1 Byte, Default Value: 0

Setting	Description
0	single click to switch on/off status
1	Key default as off state. When it is turned on, then it will be turned off automatically after a time period can be set in item 6
2	Key default as on state. When it is turned off, then it will be turned on automatically after a time period can be set in item 6
3	hold >3s then key is on, and off once released
4	single click to switch on/off status + hold >3s then key is on, and off once released

### Parameter 6: Key On duration

Size: 2 Byte, Default Value: 0

Setting	Description
0	infinite
1 - 65535	unit sec

### Parameter 8: Basic CC integration setting

*This parameter works for integration with different gateways/systems. If do not know how to use, pls keep as default.*

Size: 1 Byte, Default Value: 0

Setting	Description
0	Basic Set received, key 1 responds; Basic Get received, key 1 sends Basic Report; key 1 will not send unsolicited Basic Report (No Endpoint) to LifeLine Association
1	Basic Set received, key 1 responds; Basic Get received, key 1 sends Basic Report; key 1 will send unsolicited Basic Report (No Endpoint) to LifeLine Association
2	Basic Set received, all keys respond; Basic Get received, not reply Basic Report; All keys will not send unsolicited Basic Report (No Endpoint) to LifeLine Association
3	Basic Set received, all keys respond; Basic Get received, key 1 sends Basic Report; All keys will not send unsolicited Basic Report (No Endpoint) to LifeLine Association

### Parameter 16: Scene respond

Size: 1 Byte, Default Value: 0

Setting	Description
0	Scene respond disabled
1	Key1 respond scene

### Parameter 17: Key1 Scene Activate Mode Setting

Size: 1 Byte, Default Value: 0

Setting	Description
0	Scene activate function disabled
1	One click key1 always activate scene ID1 no matter what the status of key1 is.
2	One click key1,only activate scene ID1 when key1's relay output is open
3	One click key1,only activate scene ID1 when key1's relay output is close

### Parameter 18: Key1 Activate Scene ID

Size: 1 Byte, Default Value: 00

Setting	Description
0	Scene ID is invalid and will not send scene activate command.
1 - 255	Scene ID

### Parameter 19: Key1 Activate Scene Duration

Size: 1 Byte, Default Value: 0

Setting	Description
0	Instantly
1 - 127	Dimming durations from 1 second to 127 seconds in 1-second resolution
128 - 254	Specify dimming durations from 1 minute to 127 minutes in 1-minute resolution.

### Parameter 20: Key 2 Scene Activate Mode Setting

Size: 1 Byte, Default Value: 0

Setting	Description
0	Scene activate function disabled
1	One click key2 always activate scene ID1 no matter what the status of key2 is.
2	One click key2,only activate scene ID1 when key2's relay output is open
3	One click key2,only activate scene ID1 when key2's relay output is close

## Parameter 21: Key2 Activate Scene ID

Size: 1 Byte, Default Value: 00

Setting	Description
0	Scene ID is invalid and will not send scene activate command.
1 - 255	Scene ID

## Parameter 22: Key2 Activate Scene Duration

Size: 1 Byte, Default Value: 0

Setting	Description
0	Instantly
1 - 127	Dimming durations from 1 second to 127 seconds in 1-second resolution
128 - 254	Specify dimming durations from 1 minute to 127 minutes in 1-minute resolution.

## Parameter 255: Factory Reset

Size: 1 Byte, Default Value: 0

Setting	Description
85	Factory Reset

## Technical Data

<b>Dimensions</b>	86 x 86 x 39 mm
<b>Weight</b>	180 gr
<b>Hardware Platform</b>	ZM5101
<b>EAN</b>	4251295700755
<b>IP Class</b>	IP 20
<b>Voltage</b>	230V
<b>Load</b>	5A
<b>Device Type</b>	On/Off Power Switch
<b>Generic Device Class</b>	Binary Switch
<b>Specific Device Class</b>	Binary Power Switch
<b>Firmware Version</b>	05.02
<b>Z-Wave Version</b>	04.3e
<b>Z-Wave Product Id</b>	0x015f.0x4121.0x5102
<b>Frequency</b>	Europe - 868,4 Mhz
<b>Maximum transmission power</b>	5 mW

EuropeOn/Off Power Switch