



Shelly® H&T by Allterco Robotics is intended to be placed in a room/area in order to be aware of the humidity and temperature. Shelly H&T is battery powered, with battery life up to 18 months. Shelly may work as a standalone device or as an accessory to a home automation controller.

Specification

Battery Type:
3V DC - CR123A

Battery Life:
Up to 18 months

Electrical consumption:
• Static $\leq 70\mu A$
• Awake $\leq 250mA$

Humidity measurement range: 0~100% ($\pm 5\%$)

Temperature measurement range:
-40°C ÷ 60 °C ($\pm 1^\circ C$)

Working temperature:
-40°C ÷ 60 °C

Dimensions (HxWxL):
35x45x45 mm

Radio protocol:
WiFi 802.11 b/g/n

Frequency:
2400 – 2500 MHz;

Operational range:
• up to 50 m outdoors

• up to 30 m indoors

Radio signal power:
1mW

Complies with EU standards:

• RE Directive 2014/53/EU

• LVD 2014/35/EU

• EMC 2004/108/WE

• RoHS2 2011/65/UE

Installation Instructions

CAUTION! Before beginning the installation please read the accompanying documentation carefully and completely. Failure to follow recommended procedures could lead to malfunction, danger to your life or violation of the law. Allterco Robotics is not responsible for any loss or damage in case of incorrect installation or operation of this device.

CAUTION! Use the Device only with batteries which comply with all applicable regulations. Inappropriate batteries may cause a short circuit in the Device, which may damage it.

CAUTION! Do not allow children to play with the device, especially with the Power Button. Keep the devices for remote control of Shelly (mobile phones, tablets, PCs) away from children.

Control your home with your voice

All Shelly devices are compatible with Amazons' Alexa and Googles' assistant. Please see our step-by-step guides on:

<https://shelly.cloud/compatibility/Alexa>

<https://shelly.cloud/compatibility/Assistant>

Device „Wake Up“

CAUTION! To open the device, twist the top and bottom part of the case counter clockwise.

Press the Button. The LED should flash slowly. This means that Shelly is in AP mode. Press the Button again and the LED will turn off and Shelly will be in „sleep“ mode.

LED States

- LED flashing quickly - AP Mode
- LED flashing slowly - STA Mode (No Cloud)
- LED still - STA Mode (Connected to Cloud)
- LED flashing quickly - FW Update (STA mode connected Cloud)

Factory Reset

You can return your Shelly H&T to its Factory Settings by pressing and holding the Button for 10 seconds. Upon successful factory reset the LED will flash slowly.

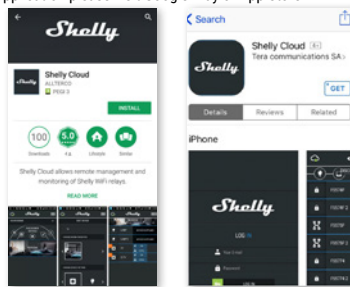
Additional Features

Shelly allows control via HTTP from any other device, home automation controller, mobile app or server. For more information about the REST control protocol, please visit: www.shelly.cloud or send a request to developers@shelly.cloud



The Shelly Cloud mobile application

Shelly Cloud gives you opportunity to control and adjust all Shelly® devices from anywhere in the world. The only thing you need is connection to the Internet and our mobile application, installed on your smartphone or tablet. To install the application please visit Google Play or App Store.



Registration

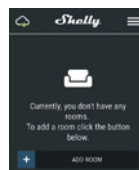
The first time you open the Shelly Cloud mobile app, you have to create an account which can manage all your Shelly® devices.

Forgotten Password

In case you forget or lose your password, just enter the e-mail address you have used in your registration. You will then receive instructions on how to change your password.

WARNING! Be careful when you type your e-mail address during the registration, as it will be used in case you forgot your password.

After registering, create your first room (or rooms), where you are going to add and use your Shelly devices. Shelly Cloud allows easy control and monitoring using a mobile phone, tablet or PC.



Device Inclusion

To add a new Shelly device, connect it to the power grid following the Installation Instructions included with the Device.

Step 1

Place your Shelly H&T in the room where you want to use it. Press the Button - the LED should turn on and flash slowly.

WARNING! If the LED does not flash slowly, press and hold the Button for at least 10 seconds. The LED should then flash quickly. If not, please reply or contact our customer support at: support@shelly.cloud

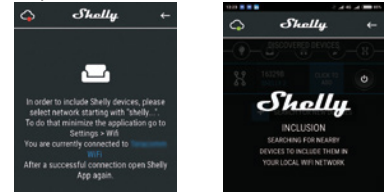
Step 2

Choose "Add Device". In order to add more devices later, use the Menu at the top right corner of the main screen and click "Add Device". Type the name and password for the WiFi network, to which you want to add Shelly.

Step 3

- If using iOS: you will see the following screen (fig. 4) On your iOS device open Settings > WiFi and connect to the WiFi network created by Shelly, e.g. ShellyHT-35FA58.

- If using Android (fig. 5) your phone will automatically scan and include all new Shelly devices in the WiFi network, that you defined.



Upon successful Device Inclusion to the WiFi network you will see the following pop-up:



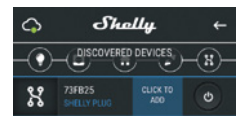
Step 4:

Approximately 30 seconds after discovery of any new devices on the local WiFi network, a list will be displayed by default in the "Discovered Devices" room.



Step 5:

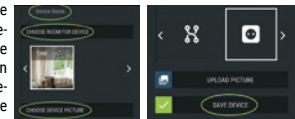
Select Discovered Devices and choose the Shelly device you want to include in your account.



Step 6:

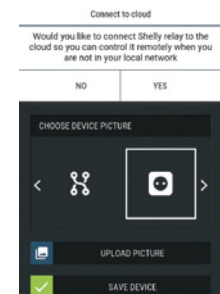
Enter a name for the Device. Choose a Room, in which the device has to be positioned.

You can choose an icon or upload a picture to make it easier to recognize. Press "Save Device".



Step 7:

To enable connection to the Shelly Cloud service for remote control and monitoring of the Device, press "yes" on the following pop-up.



Shelly Devices Settings

After your Shelly device is included in the app, you can control it, change its settings and automate the way it works.

To switch the device on and off, use the Power button.

To enter the details menu of the device, click on it's name.

From there you may control the device, as well as edit its appearance and settings.



Alarms

Low Temperature Alarm:

Receive a notification when the temperature is less than a predefined value. Possible range: -20 ~ 60°C

High Temperature Alarm:

Receive a notification when the temperature is greater than a predefined value. Possible range: -20 ~ 60°C

Low Humidity Alarm:

Receive a notification when the humidity is less than a predefined value. Possible range: 1 ~ 100%

High Humidity Alarm:

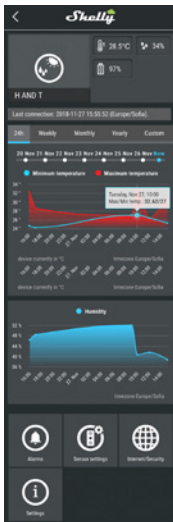
Receive a notification when the humidity is greater than a predefined value. Possible range: 1 ~ 100%

Sensor settings

Temperature Units

Setting for change of the temperature units.

- Celsius
- Fahrenheit



Send Status Period: Define the period (in hours), in which Shelly H&T will report its' status. Possible range: 1 ~ 24 h.

Temperature Threshold: Define the temperature Threshold in which Shelly H&T will "wake up" and send status. The value can be from 1° up to 5° or you can disable it.

Humidity Threshold: Define the humidity Threshold in which Shelly H&T will "wake up" and send status. The value can be from 0.5 up to 50% or you can disable it.

Internet/Security

WiFi Mode - Client: Allows the device to connect to an available WiFi network. After typing the details in the respective fields, press Connect.

WiFi Mode - Access Point: Configure Shelly to create a Wi-Fi Access point. After typing the details in the respective fields, press Create Access Point.

Restrict Login: Restrict the web interface (IP in the Wi-Fi network) of Shelly with a Username and Password. After typing the details in the respective fields, press **Restrict Login**.

Settings

Firmware Update

Update the firmware of Shelly, when a new version is released.

Time Zone and Geo-location

Enable or Disable the automatic detection of Time Zone and Geo-location.

Factory Reset

Return Shelly to its factory default settings.

Device Information

Here you can see the:

- Device ID - Unique ID of Shelly
- Device IP - The IP of Shelly in your Wi-Fi network

Edit Device

From here you can edit:

- Device Name
- Device Room
- Device Picture

When you are done, press **Save Device**.

The Embedded Web Interface

Even without the mobile app Shelly can be set and controlled through a browser and connection of a mobile phone or tablet.

Abbreviations used:

Shelly-ID – consists of 6 or more characters. It may include numbers and letters, for example **35FA58**.

SSID – the name of the WiFi network, created by the device, for example **ShellyHT-35FA58**.

Access Point (AP) – in this mode in Shelly creates its own WiFi network.

Client Mode (CM) – in this mode in Shelly connects to another WiFi network.

Installation/Initial inclusion

Step 1

Place Shelly in the room where you want to use it. Open it and press the Button. The LED should flash slowly.

△ To open the device, twist the top and bottom part of the case counter clockwise.

△ **CAUTION!** If the LED does not flash slowly, press and hold the Button for 10 seconds. Upon successful factory reset, the LED will flash slowly.

Step 2

When the LED is flashing slowly, Shelly has created a WiFi network, with name such as **ShellyHT-35FA58**. Connect to it.

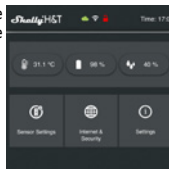
Step 3

Type **192.168.33.1** into the address field of your browser to load the web interface of Shelly.

General - Home Page

This is the home page of the embedded web interface. Here you will see information about:

- Current Temperature
- Current Humidity
- Current battery percentage
- Connection to Cloud
- Present time
- Settings



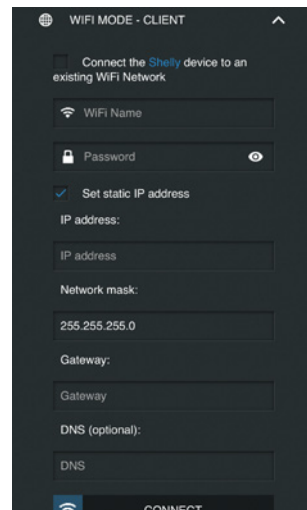
Battery Life Recommendations

For the best battery life we recommend you the following settings for Shelly H&T:

Sensor settings

- Send Status Period: 6 h
- Temperature Threshold: 1°
- Humidity Threshold: 10%

Set a static IP address in the Wi-Fi network for Shelly from the embedded web interface. Go to **Internet/Security** -> **Sensor settings** and press on **Set static IP address**. After typing the details in the respective fields, press **Connect**.



Keep Shelly at the best distance possible to the Wi-Fi router.

Sensor Settings

Temperature Units: Setting for change of the temperature units.

- Celsius
- Fahrenheit

Send Status Period: Define the period (in hours), in which Shelly H&T will report its' status. The value must be between 1 and 24.

Temperature Threshold: Define the temperature Threshold in which Shelly H&T will "wake up" and send status. The value can be from 1° up to 5° or you can disable it.

Humidity Threshold: Define the humidity Threshold in which Shelly H&T will "wake up" and send status. The value can be from 0.5 up to 50% or you can disable it.

Internet/Security

WiFi Mode-Client: Allows the device to connect to an available WiFi network. After typing the details in the fields, press **Connect**.

WiFi Mode-Access Point: Configure Shelly to create a Wi-Fi Access point. After typing the details in the fields, press **Create Access Point**.

Restrict Login: Restrict the web interface of Shelly with a Username and Password. After typing the details in the respective fields, press Restrict Shelly.

Advanced Developer Settings: Here you can change the action execution:

- Via CoAP (CoIoT)
- Via MQTT

△ **ATTENTION!** To reset the device, press and hold the Button for at least 10 seconds. Upon successful factory reset, the LED will flash slowly.

Settings

Time Zone and Geo-location: Enable or Disable the automatic detection of Time Zone and Geo-location. If Disabled you can define it manually.

Firmware Upgrade: Shows present firmware version. If a newer version is available, you can update your Shelly by clicking Upload to install it.

Factory reset: Return Shelly to its factory settings.

Device Reboot: Reboots the device.



Shelly[®]H&T

Developers support

Our Facebook support group:

www.facebook.com/groups/1686781668087857

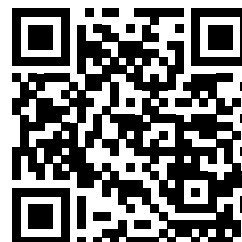
Our support e-mail:

support@shelly.cloud

Our website:

www.Shelly.cloud

You can find the latest PDF version of this user guide here:



2011/65/EU
(RoHSII Directive)