

# HYDROFILL™ PRO

BATTERY OPERATED MOBILE WATERING CART



## INSTRUCTIONS

Part No.  
**CRT-E208**

OR

Part No.  
**CRT-E209**

Part No.  
**CRT-3**



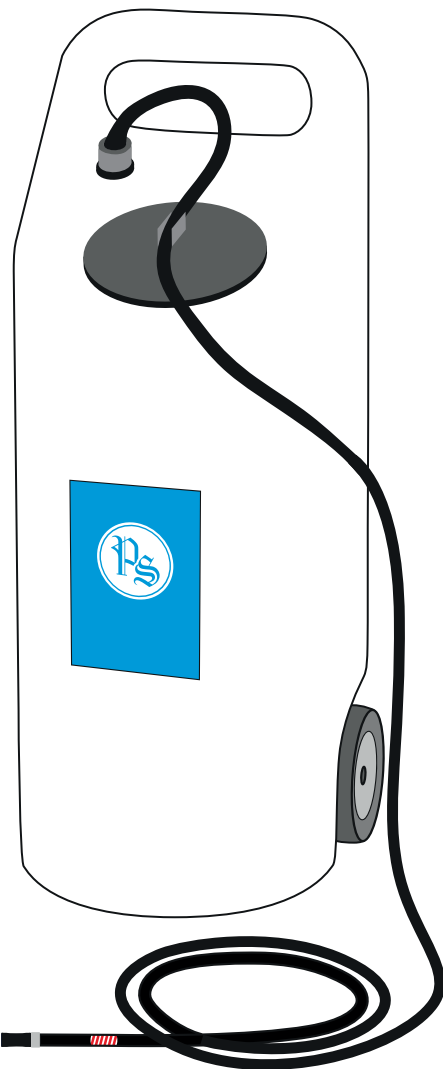
Part No.  
**PS-600**

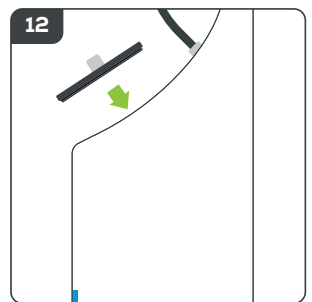
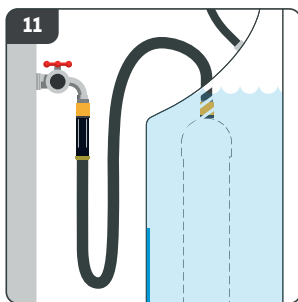
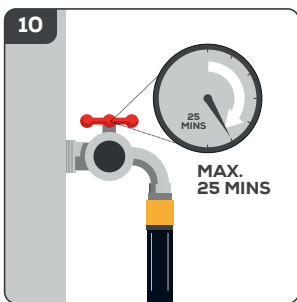
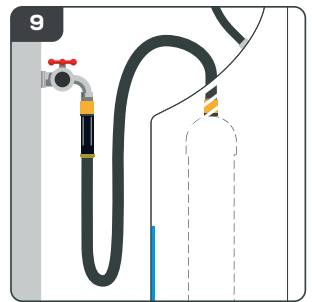
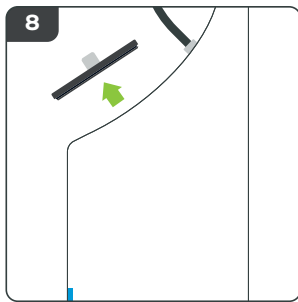
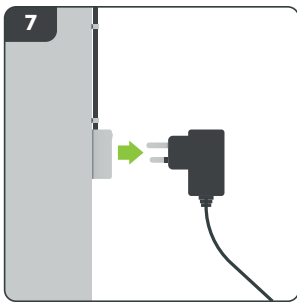
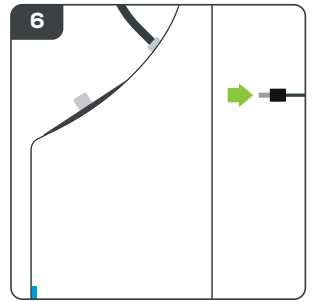
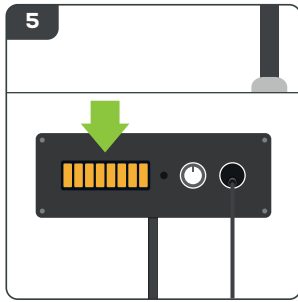
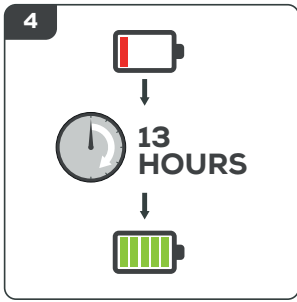
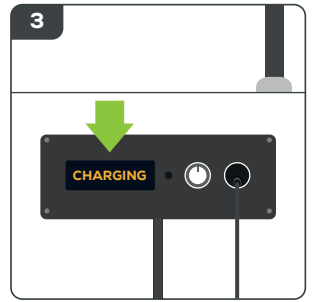
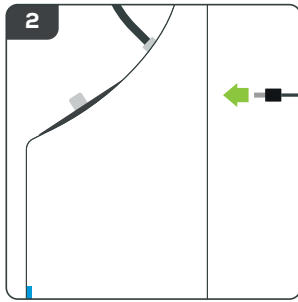
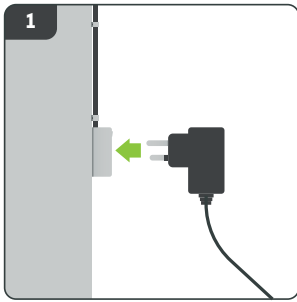


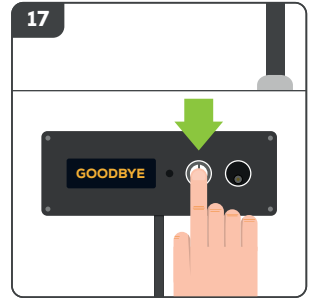
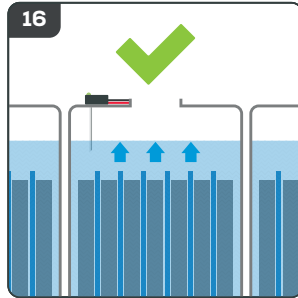
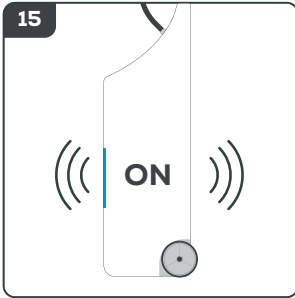
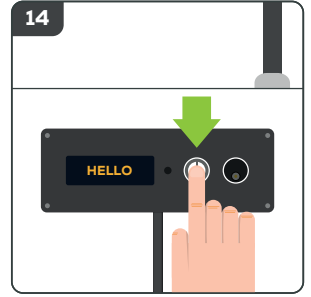
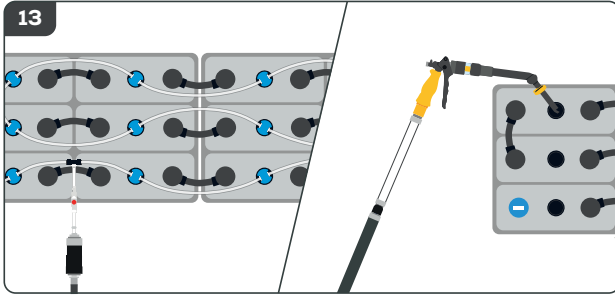
Part No.  
**CRT-E202**



Part No.  
**CRT-E210**







**FOR ADVANCED FEATURES, USER GUIDES AND FURTHER INFORMATION PLEASE VISIT:**



**BIT.LY/HYDROFILLPRO**

DOC0216 © 2018 Philadelphia Scientific UK Ltd. All Rights Reserved. Philadelphia Scientific and the PS logo are registered trademarks of Philadelphia Scientific. HydroFill and HydroPure are trademarks of Philadelphia Scientific LLC. ESO.E.



**E-mail: [info@accuservicedreumel.nl](mailto:info@accuservicedreumel.nl)**

**Mob.: 06-33616041**

**KvK: 73021415**

**BTW-nr. NL859323705B01**