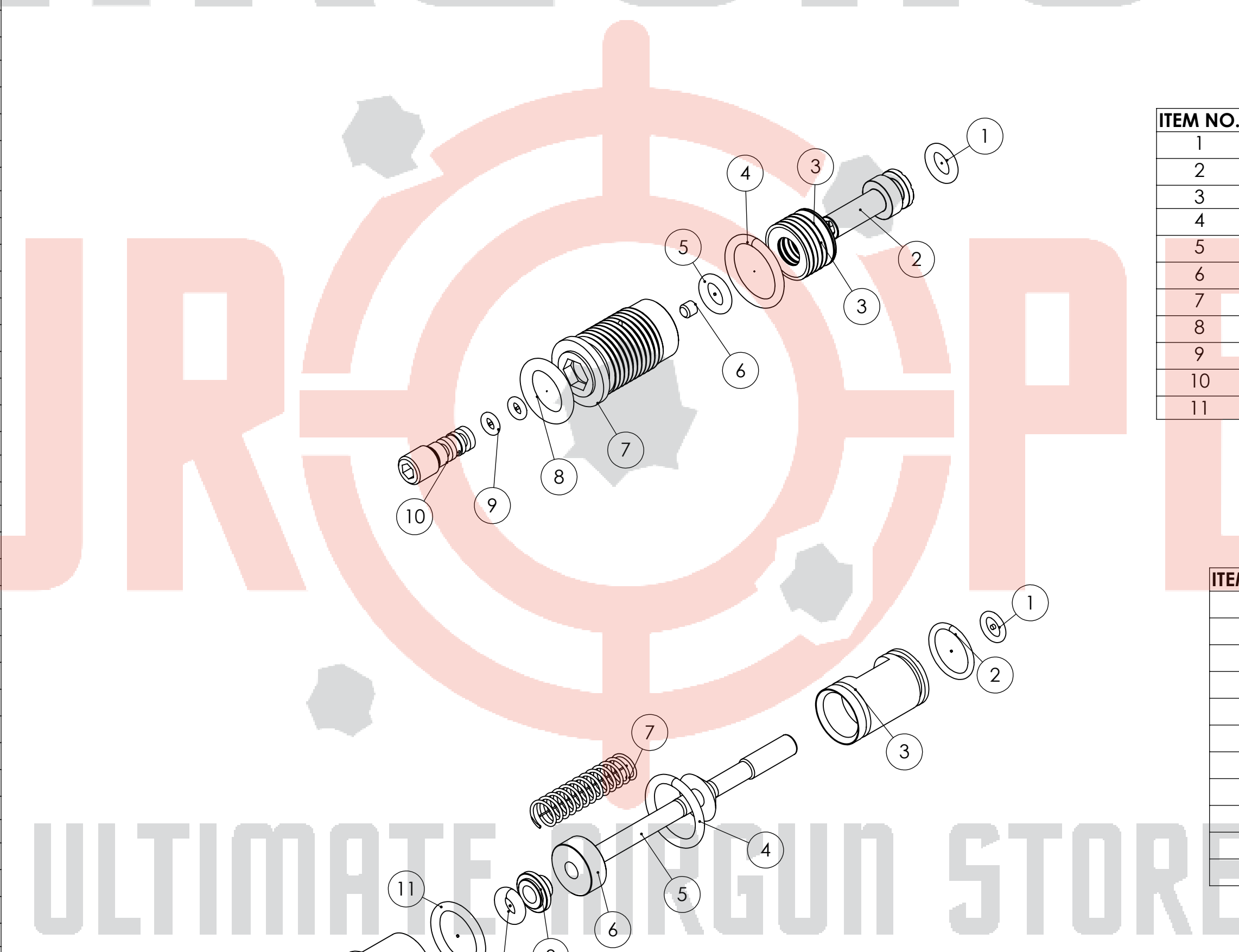


ITEM NO.	PartNo	DESCRIPTION	QTY.
1	20945	Muzzle Thread Cover	1
2	19950	O-ring 14,0 x 2,0 NBR 70	4
3	Support Page	See Schematic	1
4	Support Page	See Schematic	1
5	Support Page	See Schematic	1
6	19726	O-ring 5,5x1,5 NBR70	1
7	19485	O-ring 23,0x2,5 NBR 70	3
8	19955	Grub screw M8x6	1
9	2501	Cup point grub screw M4x6	2
10	19716	Grub screw M4x25	1
11	16100	Magnet 3x5	1
12	19611	Sidelever handle	1
13	20064	Sidelever	1
14	11060	Socket head cap screw M3x18	1
15	2562	Cup point grub screw M3x3	1
16	19034	screw M3 Grub - Special	1
17	21733	Fillprobe MkIII	1
18	5190	O-ring 3,0 x 1,5 NBR 70	3
19	19213	Cylindrical pin 2h6x10	1
20	Support Page	See Schematic	1
21	16092	Grub screw M3x4	4
22	21730	Carrier DRS	1
23	19490	Cylindrical pin 3h6x14	1
24	19026	Cylindrical pin 2,5m6x6	1
25	19935	Linkage	1
26	19039	Hammer	1
27	11540	Hammer weight	1
28	2604	Hammerspring 52mm	1
29	21801	Hammer spring adjuster	1
30	11501	Spring 0,5x2,5x6,1	2
31	4066	Steel ball 3mm	2
32	21093	Trigger Sear	1
33	11502	Cylindrical pin 2h6x20	3
34	19720	O-ring 10x1 NBR 90	2
35	19762	X-ring 3,63x2,62 NBR 70	1
36	19774	Pressure Gauge 23mm	1
37	19329	Inlet valve rod "gold"	1
38	21732	Brass plug	1
39	21731	Plenum Plug	2
40	19226	O-ring 12x2 NBR 70	3
41	5193	Screw M4x18	4
42	10374	Second stage trigger screw M5	1
43	11527	Steel ball 3,175	2
44	5565	Spring 0,32x2,5x4,8	1
45	19109	O-ring 4x1,5 NBR 70	1
46	21070	Regulator Piston	1
47	2570	Washer 10x4,2x0,5	8
48	19790	O-ring 10,0 x 1,5 NBR 90	1
49	5138	O-ring 4,0 x 1,5 NBR 90	1
50	20400	Plastic gasket Regulator piston	1
51	19697-1	Regulator housing	1
52	19225	O-ring 7,5x2,0 NBR 70	1
53	19731	O-ring 2,0x1,0 NBR90	2
54	19695	Regulator Screw	1
55	2572	Washer 10x4,2x0,6	3
56	3007	Grub screw M4x4	1
57	21825	Stock Adapter HP	1
58	21865	Distance plate	1
59	Support Page	See Schematic	1
60	21863	Plenum Cover	1
61	21867	Fore End Stock	1
62	20033	Triggercatch	1
63	11525	Trigger wheel	1
64	11504	Spring 0,32x3,2x14,4	1
65	19742	Grub screw M3x8	1
66	2504	Countersunk screw M3x6	2
67	19809	Trigger pin	1
68	11015	Second stage trigger screw M5	1
69	16093	Spring 0,3x2x10	1
70	11508	Grub screw M3x10	1
71	21813	Trigger	1
72	12035	Grub screw M2,5x2,5	1
73	20938	Valvetube End, Plenum	1
74	21852	Moderator 8,5mm	1
75	19952	O-ring 5,23 x 2,62 NBR 70	1
76	5200	screw M4x6 Button head	2
77	19480	Socket head cap screw M4x10	4
78	10335	Brass adapter	1
79	19761	O-ring 2,2x1 NBR 70	1
80	21729	Magazine Plenum	1
81	21824	Key hammaradjuster	1
82	21823	Brass guide	1
83	21822	Hammaradjuster	1
84	16123	Screw M4x12	2
85	21810	Stock Adapter Low power	1
86	21821	Magazine Plenum 12ft	1
87	21872	Buffer Tube Locking Ring	1
88	Support Page	See Schematic	1
89	10336	Safety Impact M3	1
90	21811	Triggerguard	1
91	20740	Grip	1
92	20734	Manometer Plug	1
93	2527	Socket head cap screw M3x10	3
94	19684	screw M5x8 Socket head cap	1
95	2536	Screw M4x30	1
96	21845	Rear Stock AR Black	1
97	19715-1	screw M3x5 Socket head cap	1
98	19736	Plastic Washer 5,3x3,1x1	1
99	2535	Screw M4x50	3
100	19835	O-ring 8x2 NBR 70	1
101	11507	Rubber/Steel Washer	2
102	20983	Air Cylinder Connector	1
103	5531	Tube/Bottle Carbonfiber 480cc	1
104	20992	Carbonfiber tube Rear Stock	1
105	20963	Tube Holder	1
106	20962	Tube Holder Adapter	1
107	19845	Countersunk screw M5x20	4
108	19728	Adjustment Screw Recoilpad	1
109	19679	screw M5x30 Grub	1
110	20961	Recoil Pad	1
111	2540	Socket Head Cap Screw M6x16	1
112	21861	Stock Adapter	1



ITEM NO.	PartNo	DESCRIPTION	QTY.
1	19109	O-ring 4x1,5 NBR 70	1
2	21070	Regulator Piston	1
3	2570	Washer 10x4,2x0,5	8
4	19790	O-ring 10,0 x 1,5 NBR 90	1
5	5138	O-ring 4,0 x 1,5 NBR 90	1
6	20400	Plastic gasket Regulator piston	1
7	19697-1	Regulator housing	1
8	19225	O-ring 7,5x2,0 NBR 70	1
9	19731	O-ring 2,0x1,0 NBR90	2
10	19695	Regulator Screw	1
11	2572	Washer 10x4,2x0,6	3

ITEM NO.	PartNo	DESCRIPTION	QTY.
1	5158	O-ring 3,5x1 NBR 70	1
2	19108	O-ring 8,0 x 1,0 NBR 90	1
3	20923	Valve Seat	1
4	19790	O-ring 10,0 x 1,5 NBR 90	1
5	20924	Valve Pin	1
6	20926	Valve Seal	1
7	19850	Spring 0,5x4x20	1
8	20959	Spring Seat 3,1mm	1
9	5107	O-ring 2,9 x 1,78 PUR 90	1
10	20925	Valve Housing	1
11	19763	O-ring 9x1,5 NBR 90	1

ITEM NO.	PartNo	DESCRIPTION	QTY.
1	20033	Triggercatch	1
2	11525	Trigger wheel	1
3	11504	Spring 0,32x3,2x14,4	1
4	19742	Grub screw M3x8	1
5	2504	Countersunk screw M3x6	1
6	19809	Trigger pin	1
7	11015	Second stage trigger screw M5	1
8	16093	Spring 0,3x2x10	1
9	11527	Steel ball 3,175	1
10	11508	Grub screw M3x10	1
11	21813	Trigger	1
12	12035	Grub screw M2,5x2,5	1

ITEM NO.	PartNo	DESCRIPTION	QTY.
99	2535	Screw M4x50	3
100	19835	O-ring 8x2 NBR 70	1
101	11507	Rubber/Steel Washer	2
102	20983	Air Cylinder Connector	1
103	5531	Tube/Bottle Carbonfiber 480cc	1
104	20992	Carbonfiber tube Rear Stock	1
105	20963	Tube Holder	1
106	20962	Tube Holder Adapter	1
107	19845	Countersunk screw M5x20	4
108	19728	Adjustment Screw Recoilpad	1
109	19679	screw M5x30 Grub	1
110	20961	Recoil Pad	1
111	2540	Socket Head Cap Screw M6x16	1
112	21861	Stock Adapter	1