



EXPLODED VIEW & PARTS LIST

MODELS P1322

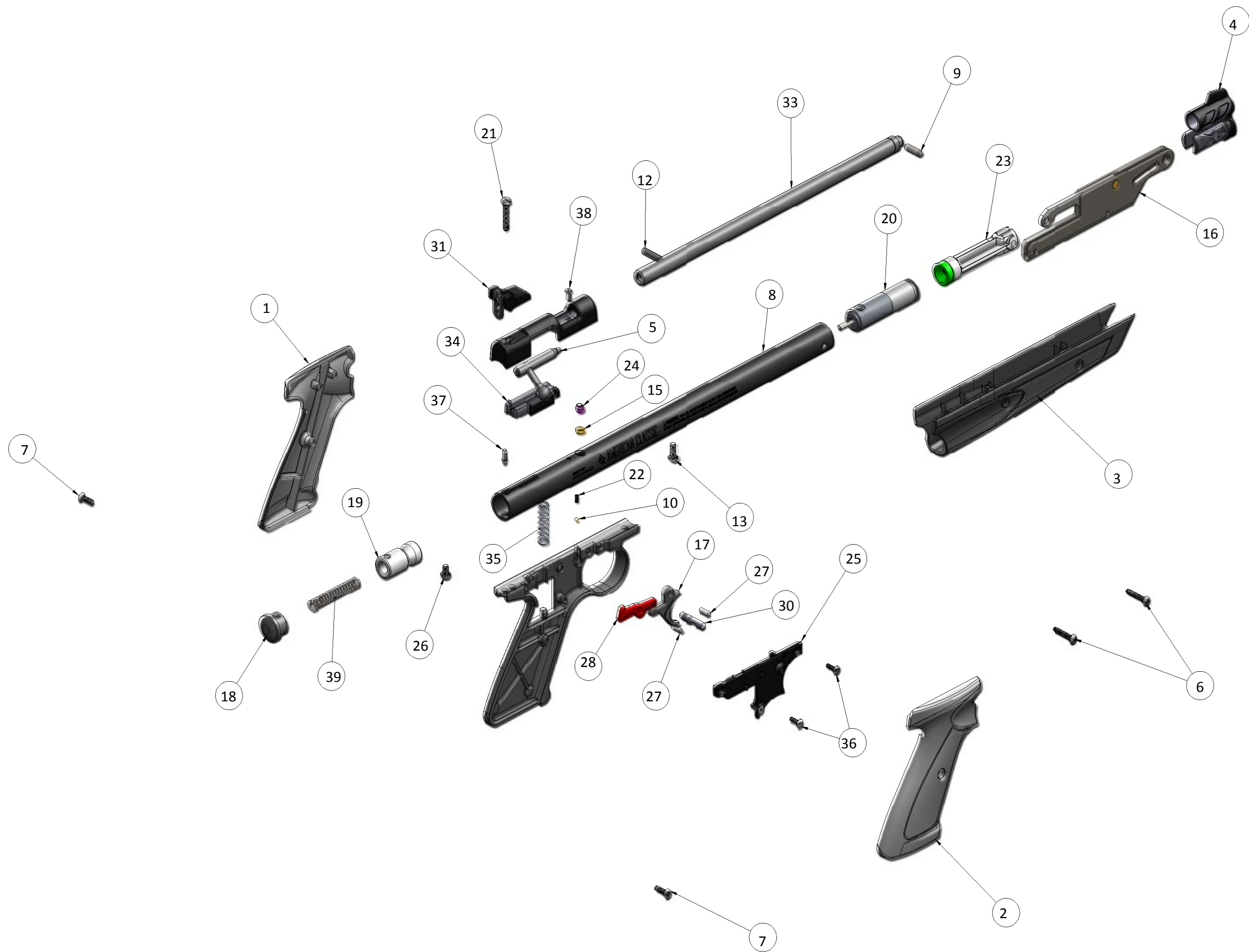


Manufacture Start Dates: 2/25/15

Last Update 2/25/15

CROSMAN CORPORATION
7629 ROUTES 5 & 20
BLOOMFIELD, NY 14469
Phone: 1-800-724-7486
Parts Order Fax: 585-657-5405
www.crosman.com

- This EVP and parts list is intended to be an informational guide in ordering parts. It is not instructional material and we therefore assume no responsibility for those who use the same without proper factory training.
- Please order by part number and description.
- Check or money order for the total price must accompany the order.
- For current prices contact Crosman Corporation at 1-800-724-7486 or visit our website www.crosman.com



ITEM NO.	PART NUMBER	DESCRIPTION	P1377-999 -Black .177 Caliber/QTY.	Revised Date
1	P1377-001	L.H. Grip, Black	1	
2	P1377-002	R.H. Grip, Black	1	
3	P1377-003	Forearm, Black	1	
4	P1377-004	Front Sight	1	
5	P1322-005	BOLT ASSY, .22 CALIBER	1	
6	P1377-009	Forearm Screw, #6-32 x .750, PPH TYPE F	2	
7	P1377-010	Grip Screw	2	
8	P1322-011	Pump Tube, .22 Caliber	1	
9	101-033	PIN, PLUNGER GUIDE	1	
10	105-039	DIA .093 STEEL BALL	1	
11	111A067	WASHER, SPRING	1	
12	130-030	Pivot Pin	1	
13	130B031	SCREW, 8-32 x .437	1	
14	130-035	O-RING, 2-111	1	
15	130-036	BREECH GASKET	1	
16	760KB-100	ASSY LEVER-LINK	1	
17	1300-017	TRIGGER, BLACK	1	
18	1322B002	Tube Plug	1	
19	1322C005	STRIKER	1	
20	1322C013	ASSEMBLY, EXHAUST VALVE	1	
21	1322-015	SCREW, 8-32 x .843	1	
22	1322-017	SPRING, SAFETY	1	
23	760KB-150	PUMP ROD ASSY	1	
24	1322A026	SLEEVE	1	
25	1322B044	COVER	1	
26	1322A029	SCREW, 8-32 x 271, RND HD	1	
27	1322-045	PIN, .125 x .390	2	
28	1322A048	SEAR	1	
29	1322B051	FRAME, TRIGGER	1	
30	1322-052	SAFETY	1	
31	1322A059	REAR SIGHT ASSY	1	
32	1377-074	BREECH	1	
33	1322-064	BARREL, .22 CAL	1	
34	1377-077	BASE	1	
35	1377-080	SPRING, VALVE	1	
36	1763-056	SCREW, 4-40 x .375, FHCS	3	
37	2100A011	HAMMER PIN	1	
38	1322B027	SCREW, 4-48 x250	1	
39	781B051	Main Spring	1	