

SNOWPEAK[®]

OWNER'S MANUAL **for PCP SERIES**

ALWAYS FOLLOW THESE SAFETY WARNINGS

⚠WARNING: Not a toy. This air rifle is intended for ADULT USE ONLY. Misuse or careless use may cause serious injury or death.

⚠WARNING: DO NOT brandish or display this air rifle in public --- it may confuse police and others thinking it is a firearm. DO NOT Change the coloration and markings to make it look more like a firearm. That is dangerous and may be crime.

⚠WARNING: WHATEVER THE CONDITION IS, NEVER POINT THIS AIR RIFLE AT ANYONE EVER.

⚠WARNING: Lead pellets. Do not inhale dust or put pellets in mouth. wash hands after handling. This product contains lead, a chemical known to public to cause cancer and birth defects (or other productive harm).

⚠WARNING use only compressed air in this air rifle. use no other gases -- including oxygen, which can cause a fire or explosion that may result in serious injury or death.

⚠WARNING: This air rifle could fire when dropped or jarred, with or without the safety engaged.



Thank you for choosing Snowpeak. Play safely with all our PCP guns.

PLEASE READ ALL INSTRUCTIONS AND WARNINGS IN THIS MANUAL BEFORE HANDLING OR SHOOTING THIS AIR RIFLE. ALWAYS USE CAUTION WHEN OPERATING THIS AIR RIFLE. BUYER AND USER SHOULD HAVE THE DUTY TO OBEY ALL LAWS ABOUT THE USE AND OWNERSHIP OF THIS AIR RIFLE. AND REMEMBER THIS AIR RIFLE IS HIGHLY POWERED AND INTENDED FOR ADULT USE ONLY.

⚠ WARNING: Not a toy. This air rifle is intended for ADULT USE ONLY. Misuse or careless use may cause serious injury or death.

⚠ WARNING: DO NOT brandish or display this air rifle in public --- it may confuse police and others thinking it is a firearm. DO NOT change the coloration and markings to make it look more like a firearm. That is dangerous and may be crime.

⚠ WARNING: WHATEVER THE CONDITION IS, NEVER POINT THIS AIR RIFLE AT ANYONE EVER.

⚠ WARNING: Lead pellets. Do not inhale dust or put pellets in mouth. Wash hands after handling. This product contains lead, a chemical known to public to cause cancer and birth defects (or other productive harm).

⚠ WARNING: Use only compressed air in this air rifle. Use no other gases --- including oxygen, which can cause a fire or explosion that may result in serious injury or death.

⚠ WARNING: This air rifle could fire when dropped or jarred, with or without the safety engaged.

⚠ CAUTION

Failure to follow the instructions and recommendations in this owner's manual may result in bodily injury including face, eye, and ear injury, blindness, or deafness.

Before using your new air rifle check if it is fully charged and abide the below basic safety rules:

1. Treat every rifle as it is loaded.
2. Never point the rifle at anyone, or allow anyone to point a rifle at you, even if you know it is not loaded.
3. Always carry the rifle so that the direction of the muzzle is under control, even if you stumble.
4. Always be sure of your target and what lies behind it before firing your rifle.
5. Never leave a loaded rifle unattended.
6. It is recommended that eye & ear protection is worn when charging the cylinder and shooting.
7. You and others with you MUST always wear shooting glasses to protect your eyes. If you wear reading glasses the lenses must be certified for impact resistance or you should wear safety glasses intended for use over normal optical reading glasses.
8. Always keep your finger off the trigger and out of the trigger guard until ready to shoot.
9. Never look down the muzzle of an air gun.
10. Always keep the air gun "ON SAFE" until you are ready to shoot.
11. Always check to see if the airgun is "ON SAFE" and unloaded when getting it from another person or from storage.
12. Do not shoot at fragile objects such as windows.
13. Do not attempt to disassemble or tamper with your air gun, Unauthorized repairs or modifying the function of your air gun in any way may be unsafe and will void your warranty.
14. Before storing your air gun, make sure it is unloaded and the air gun is "ON SAFE".

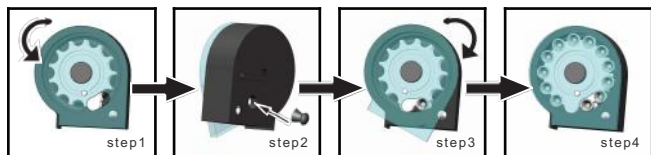
OPERATING PROCEDURES

1. Loading:

Magazine loading for M25/M30B/M30c/M60

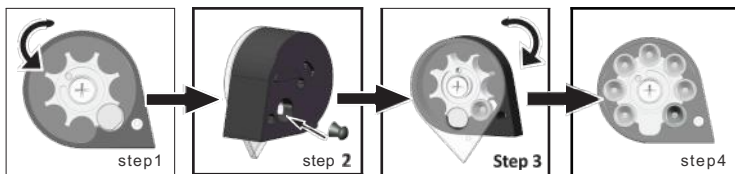
M11/M22/M16/M16A/P10

- Turn the magazine counterclockwise to the end and fasten it by hand. (see step 1)
- o put the pellet into the magazine according to the pointed-end direction in step 2. (see step 2)
- turn the magazine cap on clockwise, load the pellet until full fill the magazine. (see step 3 & step 4)
- It holds 12 pellets for cal.4.5, 10 shots for cal.5.5, 9 shots for 6.35.



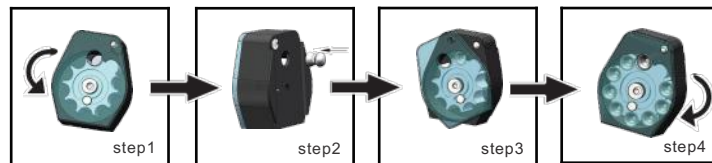
Magazine loading for pRgoow-GEN2/pp800R/pp750

- o Model PRgoow-GEN2/pp800R are both capable of single shot and multi-shot. please follow its procedures separately.
- o Load one pellet, skirt first, into the magazine port (see step 2). Turn the transparent plate clockwise to load another pellet until the plate rebound is felt, which means the last pellet is loaded. Turn the plate back and now you have finished loading pellets to the magazine



Magazine loading for 15/p35

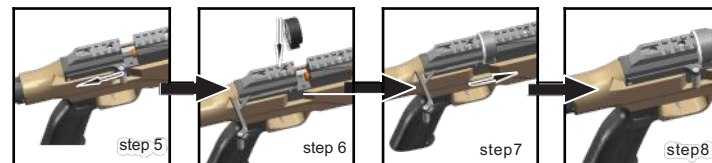
- Turn the magazine counterclockwise to the end and fasten it by hand. (see step 1)
- put the pellet into the magazine according to the pointed-end direction in step 2. (see step 2)
- Turn the magazine cover clockwise. Each time it passes the loading hole, you can put a pellet till the magazine is full. (see step 3 & step 4)
- o It holds 11 pellets for cal.4.5, 9 shots for cal.5.5, 8 shots for cal.6.35.



operating for M40/M50

- cocking
- your M40/M50 have semi-auto function, first press the small cooper button on the cocking lever to open the lever, then cock the lever, after that you can continue shooting as fast as you can. The repeating function is based on the air pressure. when the pressure is lower than 10MPa, it can't hold this repeating function. But you still can shoot by cocking the lever. we recommend charging the air when pressure drops to 10Mpa.

Follow the steps to Cock and load magazine.

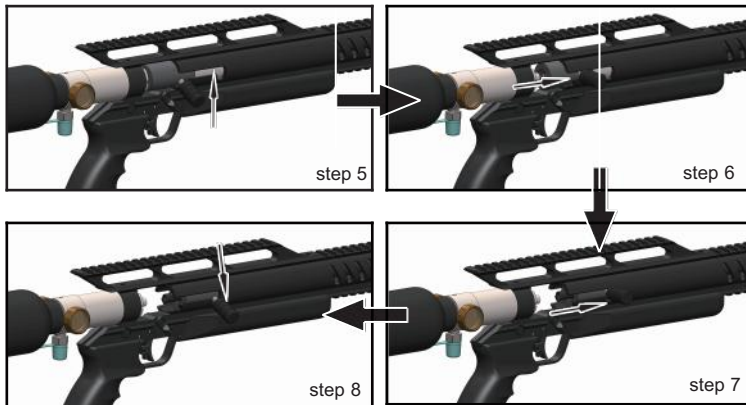


operating for M18

- Check if the air pressure in your gas cylinder is in a reasonable range.
- Point muzzle in a SAFE DIRECTION when loading. NEVER POINT IT AT ANYONE.
- Make sure the safety is “ON” before loading.

The followings are the loading procedure for M18 :

- When you are holding the air rifle, make sure it is not cocked and unloaded and check if you take the same caliber pellets as your barrel .
- Pull the button to cock the rifle. Now the loading port can be seen in Step7.
- After cocking, push the button to the end in the arrow direction, then load the pellet(See Step 8).



LOADING PROCEDURES

Note:when loading, button must be pushed to the end(see step 8) to avoid accidents.

2. charging air

Fit the attached fill adaptor to the socket coupler of your charging equipment, which must incorporate a pressure gauge (see FIG 3 to fit fill adaptor). Remove fill hole cover first. Ensure both fill adaptor and the filler hole are clean from dirt, then insert fill adaptor into filler hole(see FIG 4to insert fill adaptor). we recommend you not to fill the pressure over the maximum pressure

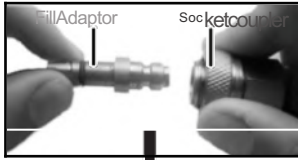


FIG 3 FIT FILL ADAPTOR

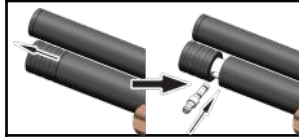


FIG 4 INSERT FILL ADAPTOR

A. Filing the Air Rifle with a Handpump

- o Make sure the air rifle is unloaded and not cocked.
- Read all instructions with your hand pump So you are familiar with its operation.
- put the air rifle "ON SAFE" (not showing red)
- o point the air rifle in a SAFE DIRECTION.

B. Filing the Air Rifle with a scuba Tank

- o connect the scuba tank and the rifle.
- slowly open the valve on your tank and start filling the air rifle SLOWLY. Filling too quick will cause heat buildup that can affect the accuracy of the fill pressure.
- o watch the gauge on your air rifle and the air reservoir until the reasonable pressure is reached .
- DO NOT fill the air rifle to more than maximum pressure.
- Turn the valve on your tank off when the reasonable pressure is reached.
- BLEED the fill hose COMPLETELY to avoid hose whip and possible injury.
- o Disconnect the tank's fill hose from the filler nozzle on the air rifle

Remark: For model P15/M16/PP20/P35/M25/PP750/PP700/M18/P10, it is better to cock the gun before changing the air.

3. Manual safety



SAFETY POSITION
Red pin is not visible.

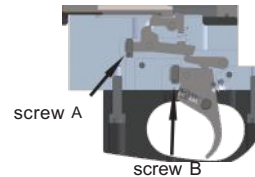


FIRE POSITION
Red pin is visible.

4. Adjust the trigger

some of pcp models have two stage adjustable trigger, and some are adjustable . Here is the instruction on how to adjust the trigger .

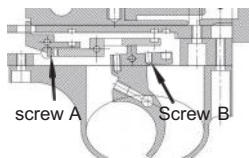
1. Adjust for M16/M16A/M30B/ M30C / M11 /M22/M25/PRgooGEN-2 : screw A adjusts the contact surface between the iron block and the lever to achieve the speed of firing, screw B is used to adjust the length of the first stage.



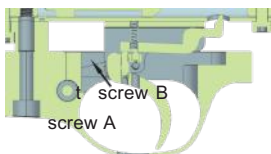
M16/M16A



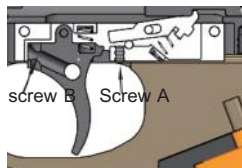
M30B/M30C



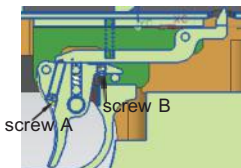
M11/M22/M25



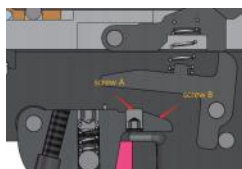
PRgoogen-2



M50/M40



PP800R/PP750



PP750L

2. PP700W/PP700S-A :

screw A is used to adjust the length of the first stage

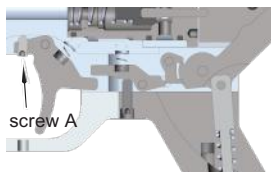


FIG 3

5. De-gas

How to De-gas M30

Turn the pressure-adjust screw in clockwise, just turn a little bit,cock the gun and fire 1-2 shots, then check the regulator pressure gauge. If the pressure is more than 5 Mpa, repeat the above action; If the pressure is just 5Mpa or less, slowly turn the de-gas screw (SEE FIG4) until the air is leaking, then turn the pressure-adjust screw in anticlockwise until the air is all leaked and the gauge shows (zero).



FIG 4



FIG 5

How to De-gas M25

see Fig 6 , there is a de-gas screw on the out-put valve, just loose it slowly, until you can hear the air leaking sound.when the air is completely emptied,tighten the de-gas screw .

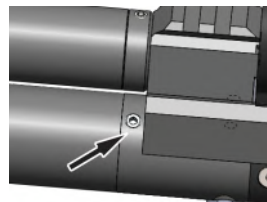


FIG 6

How to De-gas M16A/M16/M40/M50/P10/PR900W-GEN2/PP750/PP700S-A/PP800R

- Keep the air rifle pointed in a SAFE DIRECTION.
- Remove all the air from the air rifle by repeated cocking and dry-firing with the air rifle pointed in a SAFE DIRECTION until the pressure gauge on your air rifle shows no pressure and NO air cannot be heard when the shot is fired.
- Put the air rifle "ON SAFE".

5.1 Common Issues and Solutions

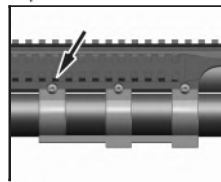
NO	ISSUE	Solution
1	Leakage at fill adapter when charging	Replace the filler O-ring
2	Air coming out from barrel when charging	Cock the gun first then charge OR change exhaust valve core
3	Leakage at filler hole after charging	Replace intake valve O-ring
4	Leakage at mount place of exhaust/intake valve and air reservoir	Replace intake valve O-ring
5	Leakage at pressure gauge when charging	Replace pressure gauge O-ring
6	Bolt can't be turned to the end	Bolt screws become loose and need to be re-tightened
7	Grouping suddenly become not good	Barrel fixing screws become loose and need to be re-tightened
8	Leakage when fire at loading port	Change breech O-ring
9	Feeling heavy to pull the bolt	Dismantle breech, clean around bolt probe and add lubricating oil on bolt probe

5.2 Common Issues and Solutions for M40/M50

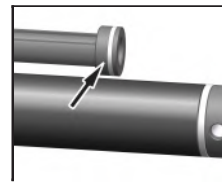
1. Don't have repeating function even the pressure is more than 10MPa solution :

1.1 Tighten the slincer.

1.2 Clean the seal (FIG7)at the muzzle of the barrel.Please follow the following steps.



First loose the screw,then take out the scw pin and dismantle the buffer.



You will see th seal on the barrel cover.Clean and lubricate it with grease.

FIG 7

2. Cocking connect lever is not back to original position.First,take off the receiver cover.Next,clean the connect lever and the movement area.Then lubricate then with grease.

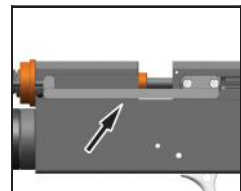
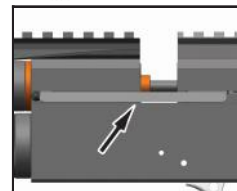


FIG 8

SPECIFICATION

MODEL		P15	P10	P35	M25	M40	M50
BARREL LENGTH		450mm	472mm	450mm	550mm	460mm	510mm
	4.5	11 shots	12 shots	11 shots	12 shots	12 shots	12 shots
	5.5	9 shots	10 shots	9 shots	10 shots	10 shots	10 shots
MAGAZINE CAPACITY	6.35	8 shots	9 shots	8 shots	9 shots	9 shots	9 shots
	7.62	/	/	/	8 shots	/	/
	9	/	/	/	6 shots	/	/
	4.5	1000fps	1000fps	1000fps	1000fps	1000fps	1000fps
	5.5	900fps	900fps	900fps	1000fps	900fps	900fps
POWER	6.35	800fps	800fps	800fps	1000fps	800fps	800fps
	7.62	/	/	/	900fps	/	/
	9	/	/	/	800fps	/	/
REGULATOR		YES	YES	YES	YES	YES	YES
MAXIMUM PRESSURE		25 Mpa	25 Mpa	25 Mpa	25 Mpa	25 Mpa	25 Mpa
STOCK		European Beech	European Beech	synthetic	synthetic	German Beech	polymer
DIAMESSION		675*200*40mm	740*200*40mm	687*190*51mm	1230*185*65mm	810*195*40mm	1080*172*48mm
WEIGHT		2.0kg	3.75kg	2.4kg	3.8/4.0kg	3.3kg	3.5kg
AIR CAPACITY		265CC	350CC	265CC	245CC	260CC	245CC

* weight can differ a little according to wood density.

SPECIFICATION

MODEL		M16	M16A	M30B	M30C	P18	PP700S-A
BARREL LENGTH		460mm	460mm	615mm	615mm	560mm	272mm
	4.5	12 shots	12 shots	12 shots	12 shots	single shot	single shot
	5.5	10 shots	10 shots	10 shots	10 shots	single shot	single shot
MAGAZINE CAPACITY	6.35	9 shots	9 shots	9 shots	9 shots	single shot	/
	7.62	/	/	/	/	/	/
	9	/	/	/	/	/	/
	4.5	1000fps	1000fps	950fps	950 fps	1000fps	700fps
	5.5	900fps	900fps	850fps	850 fps	900fps	600fps
POWER	6.35	800fps	800fps	750fps	750 fps	800fps	/
	7.62	/	/	/	/	/	/
	9	/	/	/	/	/	/
REGULATOR		YES	YES	YES	YES	YES	YES
MAXIMUM PRESSURE		25 Mpa	25 Mpa	25 Mpa	25 Mpa	25 Mpa	25 Mpa
STOCK		German Beech	German Beech	German Beech	synthetic	synthetic	synthetic
DIAMESSION		960* 190*55mm	960*190*63mm	1160*150*60mm	¹⁰⁸⁰ / ₁₁₆₀ *180*65mm	865*175*68mm	365*145*35mm
WEIGHT		3 .0kg	3 .1kg	3 .0kg	2 .8kg	3 .8kg	0 .9kg
AIR CAPACITY		210CC	350CC	270CC	270CC	300CC	72CC

* weight can differ a little according to wood density.

SPECIFICATION

MODEL		PP800R	PP750	M11	M22	PRgoow-GEN2	M18
BARREL LENGTH		238mm	204mm	535mm	550mm	480mm	480mm
	4.5	9 shots	9 shots	12 shots	12 shots	9 shots	single shot
	5.5	7 shots	7 shots	10 shots	10 shots	7 shots	single shot
MAGAZINE CAPACITY	6.35	single shot	/	9 shots	9 shots	/	single shot
	7.62	/	/	/	/	/	/
	9	/	/	/	/	/	/
	4.5	800fps	750fps	1000fps	1000fps	900fps	1000fps
	5.5	700fps	550fps	1000fps	900fps	800fps	900 fps
POWER	6.35	/	/	900fps	800fps	/	850 fps
	7.62	/	/	/	/	/	/
	9	/	/	/	/	/	/
REGULATOR		YES	YES	YES	YES	YES	YES
MAXIMUM PRESSURE		20 Mpa	25 Mpa	20 Mpa	25 Mpa	20 Mpa	25 Mpa
STOCK		European Beech	synthetic	European Beech	European Beech	European Beech	synthetic
DIAMESSION		520*50*170mm	406* 157*32mm	1170*170*60mm	1240*170*60mm	950*200*55mm	1080*175*75mm
WEIGHT		1kg	1.47kg	3.0kg	3.7kg	2.27kg	2.9kg
AIR CAPACITY		50CC	65CC	250CC	250CC	100CC	350cc

* weight can differ a littel according to wood density.

MODEL		M60	PP750L			
喇叭 RREL LENGIII		610mm	277mm			
	4.5	24	9			
	5.5	20	7			
...GAZINE 叫队 CITY 6	3.5	18	/			
	7.62	/	/			
	9	/	/			
	4.5	1000 fps	780fps			
	5.5	900fps	680fps			
PO 帆	6.35	800fps	/			
	7.62	/	/			
	9	/	/			
R 比 U 闪 mR		YES	YES			
MAXIMUM PR 邸 URE		25MPa	25MPa			
刀 JOIX		Synthetic	Synthetic			
D 闪 M 邸 ION		925*185*55mm	578*155*32mm			
WEIGHT		3.0kg/3.1kg	1.6kg			
AIR 叫 PACITY		205/305CC(bo 廿 le)	65CC			

* Weight can differ a little according to wood density.

MAINTENANCE

⚠ WARNING: Never shoot the air rifle when the air cylinder is empty. Failure to obey this instruction could result in damage to your air rifle. Never lubricate inside the barrel as this may affect the shooting accuracy and firing intensity in negative manner.

Lubricating and Cleaning

Every 3 months or 1000 shots apply mineral based oil sparingly to the following parts:

- The surface of valve pin
- The seal of loading port

Before you begin oiling or cleaning your air rifle, always check to make sure it is unloaded.

Always be sure your air rifle barrel is clean and not blocked.

After cleaning, ensure that no cleaning patch or other obstruction remains in the barrel.

Take your air gun to a gunsmith if water, sand, etc. enters the internal mechanism of the air gun, for complete cleaning.

Dangerous conditions may occur if you do not keep your air gun clean and working properly.

Quick Fill Adaptor Seal Replacement

After a period of time, the fill adaptor seals will need to be replaced. The need for this will become noticeable if air is heard leaking at fill adaptor or the adaptor ejected from rifle fill hole when charging. Always ensure to replace both seals.

Intake Valve O-Ring Replacement

After a period of time, the intake valve seal will need to be replaced. Once air is heard leaking from intake valve, it is the sign of immediate replacement of the intake valve seal.

- Make sure there's no residual high pressures air in air reservoir, and wait until gauge needle points ZERO.
- The followings are replacement procedures of intake valve seal.
Dismantle the intake valve.
Remove intake valve screw and the used seal, and replace it and re-assemble.
- Make sure all the threads are screwed in during the assembly.
- It is recommended to seek a competent gunsmith for help to replace seal. If you need to replace it yourself, make sure there's no high pressure in the air reservoir and the gauge needle has pointed to zero.



www.snowpeaksports.com