

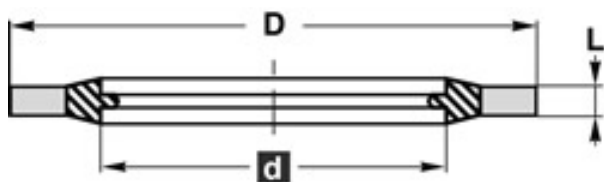
STANDARD

CONDITIONS DE TRAVAIL

Pression de service *nous contacter*

MATIERES

- | | |
|----------------|--------------------------|
| (1) 08BS9 | NBR 90 Sh A |
| 08BS9...FPM | FPM 90 Sh A |
| (2) 08BS9 | acier cadmier ou passivé |
| 08BS9...FPM | acier cadmier ou passivé |
| 08BS9...FPM/SS | acier inoxydable |



MONTAGE

Pour boulonnerie et raccords

AVANTAGES

Pas de suintement, large gamme d'élastomères et de métaux disponibles, étanchéité pour filets métriques, Whitworth et BSP

Tolérances

Série	A	B	C	E
9, 92, 93	+0,13 0	±0,13	±0,13	±0,15

NON-STANDARD

MATIERES

- | | |
|-----------------------------|-----------|
| (1) NBR 90 Sh A | |
| autres matières | EPDM, FPM |
| (2) acier cadmié ou passivé | |
| acier inoxydable | AISI 316 |

Jointes statiques (série anglaise - autocentrante)

08 BS 90 ...

Article	B.S.P. Inch.	A	B	C	E
08BS904	1/4	13.21	8.00	6.86	1.30
08BS906	5/16	13.34	9.53	8.31	1.30
08BS907	5/16	14.22	10.04	8.64	1.30
08BS908	0,4	18.36	12.45	11.26	2.00
08BS909	7/16	19.05	13.08	11.69	2.00
08BS910	9/16	22.23	16.39	14.86	2.00
08BS911	5/8	25.40	18.75	16.51	2.00

08BS912		11/16	25.40	19.69	18.16	2.50
08BS913		15/16	33.27	26.04	24.26	2.50
08BS916		1.3/8	44.45	38.99	35.94	3.40
08BS917		1.1/2	47.75	42.04	38.96	3.40
08BS918		1.3/4	57.15	48.39	45.34	3.40
08BS920	1/8	3/8	15.88	11.84	10.37	2.00
08BS921	1/4	1/2	20.57	15.21	13.74	2.00
08BS921FPM	1/4	1/2	20.57	15.21	13.74	2.00
08BS923	3/8		23.80	18.75	17.28	2.00
08BS923FPM	3/8		23.80	18.75	17.28	2.00
08BS924		3/4	26.92	21.21	19.69	2.50
08BS925	1/2	13/16	28.58	23.01	21.54	2.50
08BS925 FPM	1/2	13/16	28.58	23.01	21.54	2.50
08BS926	5/8	7/8	31.75	24.97	23.49	2.50
08BS927	3/4	1	34.93	28.53	27.05	2.50
08BS927 FPM	3/4	1	34.93	28.53	27.05	2.50
08BS929	7/8	1.3/16	38.10	32.29	30.81	2.50
08BS929 FPM	7/8	1.3/16	38.10	32.29	30.81	2.50
08BS930	1	1.5/16	42.80	36.88	33.89	3.20
08BS930 FPM	1	1.5/16	42.80	36.88	33.89	2.50
08BS932	1.1/4	1.5/8	52.38	45.93	42.93	3.20
08BS932 FPM	1.1/4	1.5/8	52.38	45.93	42.93	2.50
08BS933	1.1/2	1.7/8	58.60	51.39	48.44	3.20
08BS936	2		73.03	63.63	60.58	3.20
08BS939	2.1/2		90.30	79.38	76.08	3.25

Jointts statiques (série allemande - autocentrante)

08 BS 92

Article	Met.	A	B	C	E
08BS9202	M4	7.00	5.40	4.50	1.00
08BS9203	M5	9.00	6.80	5.70	1.00
08BS9204	M5	10.00	7.40	5.70	1.00
08BS9206	M6	10.00	8.00	6.70	1.00
08BS9207	M6	11.00	8.20	6.70	1.00
08BS9212	M8	13.00	10.00	8.70	1.00
08BS9213	M8	14.00	10.40	8.70	1.00
08BS9215	M8.5	13.30	10.50	9.30	1.00
08BS9216	M10	16.00	12.00	10.35	2.00
08BS9217	M10	16.00	12.40	10.70	1.50
08BS9218	M10	18.00	12.40	10.70	1.50

08BS9221	M11	19.10	13.50	11.80	1.50
08BS9222	M12	18.00	14.40	12.70	1.50
08BS9225	M13	22.00	15.40	13.70	1.50
08BS9226	M13.5	18.70	15.70	14.00	1.50
08BS9227	M14	22.00	16.40	14.70	1.50
08BS9229	M16	24.00	18.40	16.70	1.50
08BS9230	M17	24.00	19.20	17.40	1.50
08BS9232	M18	26.00	20.40	18.70	1.50
08BS9233	M20	28.00	22.50	20.70	1.50
08BS9236	M22	30.00	24.40	22.70	2.00
08BS9238	M24	32.00	26.40	24.70	2.00
08BS9239	M26	35.00	28.40	26.70	2.00
08BS9240	M27	36.00	29.00	27.70	2.00
08BS9243	M33	42.00	35.80	33.70	2.00
08BS9245	M36	46.00	38.80	36.70	2.00

Jointts statiques (série française - autocentrante)

08 BS 93

Article	Met.	A	B	C	E
08BS9303	M5	10.00	7.00	5.60	1.00
08BS9304	M6	11.00	8.00	6.60	1.00
08BS9307	M8	13.00	10.00	8.60	1.00
08BS9310	M10	17.00	12.10	10.70	1.50
08BS9313	M12	19.00	14.10	12.70	1.50
08BS9316	M14	21.00	16.10	14.70	1.50
08BS9317	M16	23.00	18.10	16.70	1.50
08BS9321	M20	29.00	22.40	20.70	2.00
08BS9324	M22	31.00	24.40	22.70	2.00
08BS9326	M24	33.00	26.40	24.70	2.00
08BS9335	M42	54.00	45.60	43.00	2.50