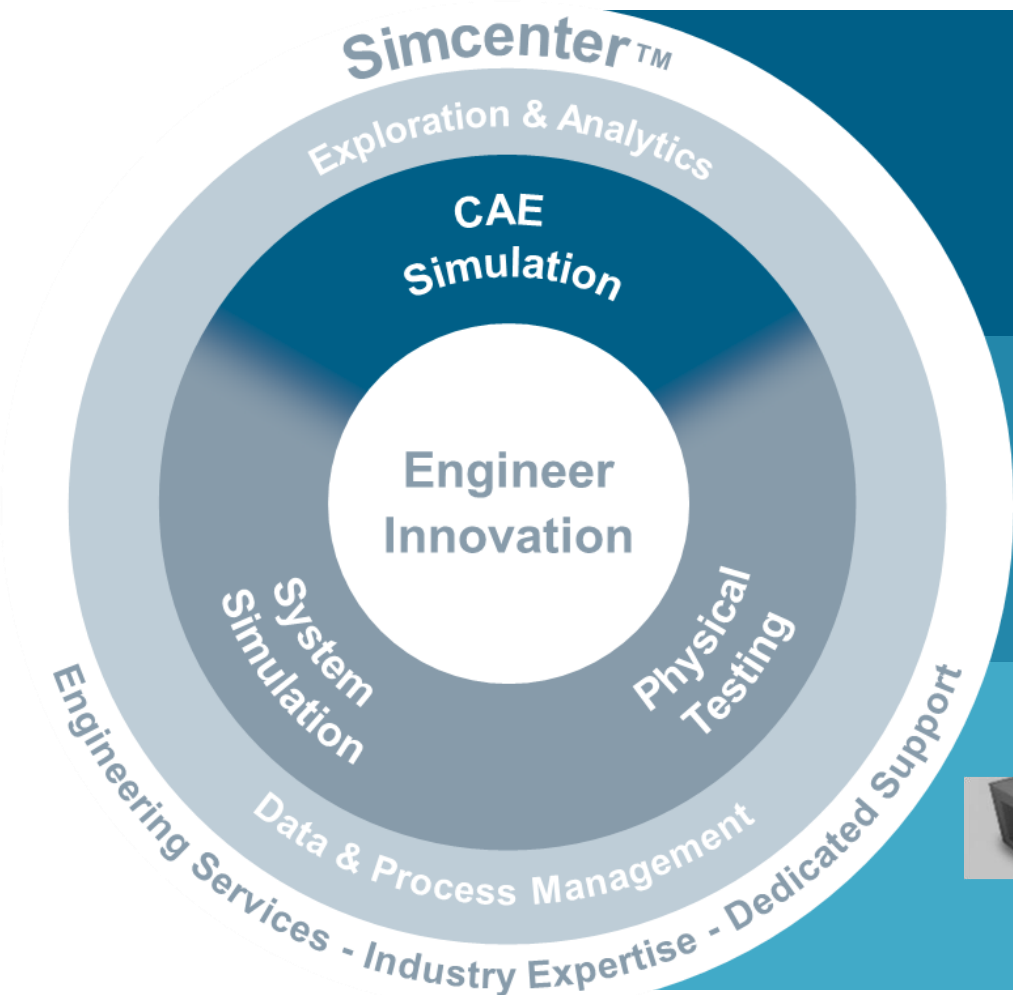




Simcenter 3D Value-Based Licensing for Simcenter 2021.1

Simcenter – Simulation and Test Solutions



CAE Simulation

Simcenter™ 3D is a unified, scalable, open and extensible environment for 3D CAE with connections to design, 1D simulation, test, and data management.

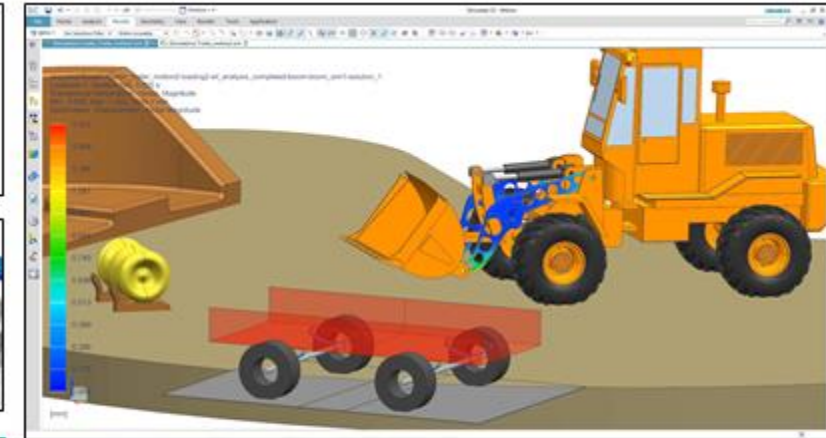
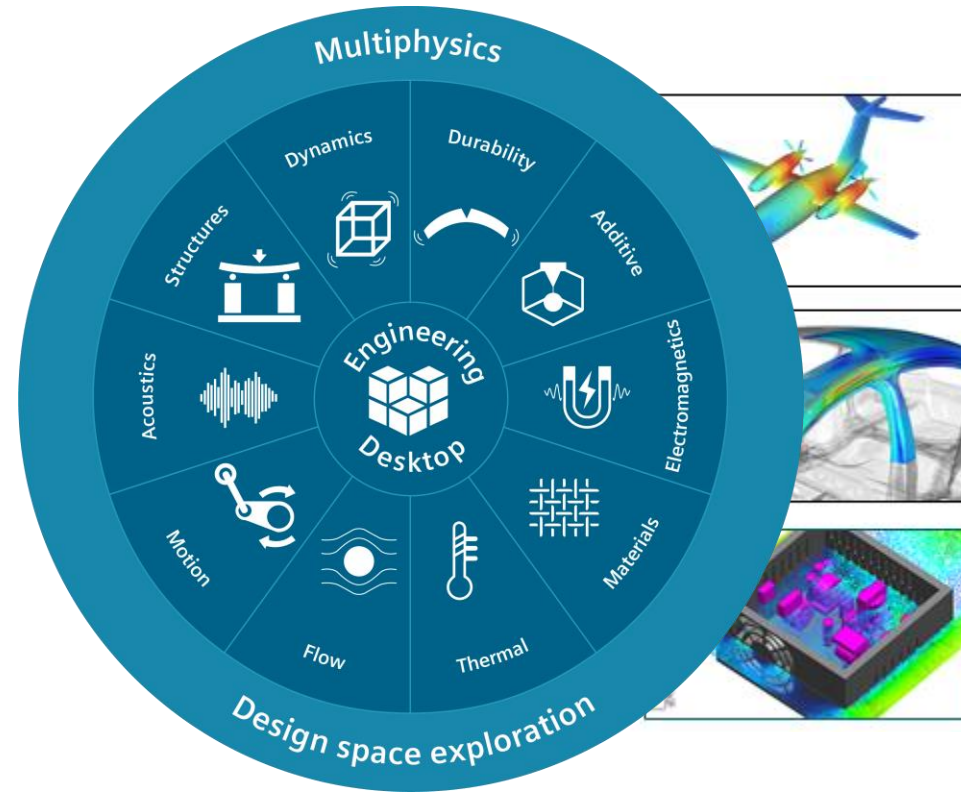


Simcenter 3D

Value Based Licensing – Motivation

Simcenter 3D provides multi-discipline solutions in a single common user environment.

Value-Based (or tokens) licensing provides a cost-effective way for users to access the full range of Simcenter 3D capabilities.



Benefit from a unified, scalable, open and extensible environment for 3D CAE

What is Value Based Licensing?

Value Based Licensing (VBL) is an additional licensing method accessed through the token packs.

Operates by the same Flex license server as used for module-based Simcenter 3D licenses

- Users can have mix of token license and module-based licenses

Requires “Base Application” to enable the use of tokens.

- Tokens apply only for additional Product Modules configured on top of “Base Application” which is a module-based “Desktop” license (perpetual or lease/recurring)
- Base Application can be any of the following
 - SC12500 Simcenter Engineering Desktop
 - SC12510 Simcenter Engineering Desktop Add-On
 - SC13500 Simcenter Structures
 - SC13510 Simcenter Structures Add-On



Why Value Based Licensing?

Provides flexibility to customers

- Allows access to various applications without having to buy specific products
- Accommodates changes in customer capability usage over time
- Customers can try-out new capabilities without having to purchase a license
- Cost efficient licensing model for customers that need access to variety of capabilities



How Value Based Licensing Works?

Users always need to run Base Application that uses module-based licensing.

Additional Simcenter 3D applications can be run using:

- Module-based licensing or
- Value-Based (token) licensing

Licenses for additional Simcenter 3D applications are checked-out as follows:

- First a module-based license is checked-out if available. If not available ...
- Tokens are checked out. If not available ...
- License fault message

When tokens are used ...

- Each application consumes a defined number of tokens
- The same number of tokens are checked-in when application ends
- Total number of applications that can be checked out on top of the Base Application is limited by the number of tokens that the user has available.



Simcenter 3D Products – Value Based Licensing Products

Simcenter 3D Valued Based Products ... started with Simcenter 11

Value Based Licensing Packs

SC10100 Simcenter Value Based License 100 Pack

- Contains 100 tokens
- Requires at least one Base Product

SC10050 Simcenter Value Based License 50 Pack

- Requires prerequisite of SC10100
- Contains 50 tokens

These products can be obtained on perpetual, subscription, or rental basis



Token Enabled Products

Most of Simcenter 3D and Simcenter Nastran

Simcenter 3D Environments

- MSC Nastran, Ansys, Abaqus, LS-Dyna, Samcef, Simcenter BEM, Simcenter Aerostructures

Simcenter 3D Thermal/Flow

- Thermal, Flow, Advanced, DMP, SST, ESC

Simcenter 3D Modeling Add-Ons

- Acoustic Meshing, Flow Modeling, Laminate Composites

Simcenter3D Solutions

- BEM Acoustics, Durability, Response Dynamics, Correlation, Model Update

Simcenter 3D Motion and Flexible Pipe

- Motion, Flexible Pipe

Simcenter 3D Materials Engineering



Structure Solvers

- Simcenter Nastran, Simcenter Samcef, Simcenter Multimech

**Most Simcenter 3D and
Simcenter Nastran
products can use token
licensing**

**88 Total
Applications**

Simcenter 3D Token Supported Applications

Product ID	Product Name
Pre/Post	
SC30536	Simcenter 3D Environment for Simcenter Samcef
SC30523	Simcenter 3D Environment for LS-Dyna
SC30549	Simcenter 3D Environment for MSC Nastran
SC30550	Simcenter 3D Environment for Ansys
SC30551	Simcenter 3D Environment for ABAQUS
SC30570	Simcenter 3D BEM Acoustics Environment
SC30601	Simcenter 3D Aerostructure Environment
SC30522	Simcenter 3D Laminate Composites
SC30560	Simcenter 3D Advanced Fluid Modeling
SC30620	Simcenter 3D Meshing for Acoustics
SC30504	Simcenter 3D Rotor Modeling
SC30604	Simcenter 3D Environment for Ray Acoustics
Design Space Exploration	
SC30610	Simcenter 3D Design Space Exploration
Additive Manufacturing	
SC40110	Simcenter 3D AM Solver Add-On

Product ID	Product Name
Thermal/Flow	
SC30507	Simcenter 3D Thermal
SC30508	Simcenter 3D Flow
SC30515	Simcenter 3D Advanced Thermal
SC30516	Simcenter 3D Advanced Flow
SC30537	Simcenter 3D Thermal/Flow DMP
SC30517	Simcenter 3D Space Systems Thermal
SC30519	Simcenter 3D Electronic Systems Cooling
Acoustics	
SC30580	Simcenter 3D BEM Acoustics Solver
SC30593	Simcenter 3D ATV
SC30594	Simcenter 3D Acoustics HPC
SC30595	Simcenter 3D Aero-Vibro-Acoustics
Dynamics	
SC30521	Simcenter 3D Response Dynamics
SC30596	Simcenter 3D Noise & Vibration Modeling
SC30501	Simcenter 3D Load Identification
Correlation	
SC30527	Simcenter 3D FE Model Correlation
SC30528	Simcenter 3D FE Model Update
Durability	
SC30531	Simcenter 3D Advanced Durability
SC30532	Simcenter 3D Specialist Durability Modelling
SC30533	Simcenter 3D Specialist Durability for Connections
SC30540	Simcenter 3D Specialist Durability Solver
SC30541	Simcenter 3D Specialist Durability Composite Fatigue
Aerostructures	
SC30602	Simcenter 3D Margin of Safety

Product ID	Product Name
Nastran	
NXN001	Simcenter Nastran Basic
NXN002	Simcenter Nastran Advanced Bundle
NXN004	Simcenter Nastran Dynamic Response
NXN010	Simcenter Nastran DMP
	Simcenter Nastran Superelement
	Simcenter Nastran DMAP
	Simcenter Nastran Aero- Elastic
	Simcenter Nastran RDMODES
	Simcenter Nastran Reduced Representations
NXN015	Simcenter Nastran Advanced Acoustics
NXN016	Simcenter Nastran Topology Optimization
NXN030	Simcenter Nastran Multistep Nonlinear
NXN040	Simcenter Nastran Rotor
Samcef	
SCSCF0151	Simcenter Samcef Bacon
SCSCF0152	Simcenter Samcef Asef Solver
SCSCF0156	Simcenter Samcef Stabi Solver
SCSCF0154	Simcenter Samcef Dynam Solver
SCSCF0155	Simcenter Samcef Repdyn Solver
SCSCF0158	Simcenter Samcef Spectral Solver
SCMEC0181	Simcenter Samcef Mecano Non-Linear Mechanical Solver
SCMEC0191	Simcenter Samcef Mecano Thermal Solver
SCSCF1152	Simcenter Samcef Asef Parallel Solver
SCSCF1154	Simcenter Samcef Dynam Parallel Solver
SCSCF1156	Simcenter Samcef Stabi Parallel Solver
SCMEC1160	Simcenter Samcef Mecano Parallel Solver
SCMEC0111	Simcenter Samcef Mecano Supervisor

Product ID	Product Name
Motion	
SC30571	Simcenter 3D Motion Modeling
SC30572	Simcenter 3D Motion Solver
SC30581	Simcenter 3D Motion Systems and Controls
SC30582	Simcenter 3D Motion Flexible Body
SC30585	Simcenter 3D Motion Standard Tire
SC30590	Simcenter 3D Motion Drivetrain
SC30579	Simcenter 3D Motion TWR
SC30583	Simcenter 3D Motion Flexible Body Advanced
SC30599	Simcenter 3D Motion Driving Dynamics
SC30575	Simcenter 3D Motion C-code export
SC30574	Simcenter 3D Motion Real-Time Desktop Solver
Flexible Pipe	
SC40510	Simcenter 3D Flexible Pipe Standard Beam
SC40570	Simcenter 3D Flexible Pipe Standard Shell
SC40500	Simcenter 3D Flexible Pipe Standard Beam + Shell
SC40520	Simcenter 3D Flexible Pipe Linear Dynamic
SC40530	Simcenter 3D Flexible Pipe Non-Linear Dynamic
SC40540	Simcenter 3D Flexible Pipe Optimization
SC40550	Simcenter 3D Flexible Pipe Advanced Beam
SC40580	Simcenter 3D Flexible Pipe EC&WH Option
SC40590	Simcenter 3D Flexible Pipe Simulation for EC&WH
Materials Engineering	
SC40200	Simcenter 3D Materials Engineering Standard
SC40201	Simcenter 3D Materials Engineering Advanced
MLM1000	Multimech
MLM2000	Multimech HPC Add-on
MLM1002	Multimech for Ansys
MLM1003	Multimech for Abaqus



Customer Usage Example

Scenario: Medium # Users, Many Applications

Aerospace Customer

- Has 12 licenses of Simcenter Engineering Desktop or Simcenter Structures
- Has varying need for add-ons

Each may have the the need to run Simcenter 3D Add-on Products

- Thermal
- Flow
- Space System Thermal
- Electronic Systems Cooling
- Response Simulation
- Laminate Composites
- Adv Fluid Modeling

Are tokens or individual licenses more cost effective?

Customer Usage - for a typical week		Monday	Tuesday	Wednesday	Thursday-Friday	Total # Licenses Needed	Total # Tokens Needed
ID	Product Name	# Licenses	# Licenses	# Licenses	# Licenses		
SC30507	Simcenter Thermal	8	3	0	4	8	
SC30508	Simcenter Flow	4	3	0	2	4	
SC30515	Simcenter Advanced Thermal	0	0	0	4	4	
SC30516	Simcenter Advanced Flow	0	0	0	2	2	
SC30517	Simcenter Space Systems Thermal	0	1	0	0	1	
SC30519	Simcenter Electronic Systems Cooling	0	1	0	0	1	
SC30521	Simcenter Response Dynamics	0	0	5	0	5	
SC30522	Simcenter Laminate Composites	0	0	5	0	5	
SC30560	Simcenter Advanced Fluid Modeling	0	2	0	0	2	
						32	500

Cost Ratio Tokens/Modules= 43%

Analysis:

9 Applications used throughout the week

Module-based Licensing

- 32 separate licenses would be required

Value-Based Licensing

- 500 tokens would cover usage

Almost 60% Cost Savings using Value Based Licensing

Customer Usage Example

Scenario: Medium # Users, Few Applications

Aerospace Customer

- Has 12 licenses of Simcenter Engineering Desktop

Each may have the the need to run Simcenter Nastran Products

- Simcenter Nastran Basic
- Simcenter Nastran Dynamic Response

Are tokens or individual licenses more cost effective?

Customer Usage - for a typical week		Monday	Tuesday	Wednesday	Thursday-Friday	Total # Licenses Needed	Total # Tokens Needed
ID	Product Name	# Licenses	# Licenses	# Licenses	# Licenses		
NXN001	Simcenter Nastran Basic	8	6	10	9	10	
NXN004	Simcenter Nastran Dynamic Response	2	3	6	2	6	
						16	1300

Cost Ratio Tokens/Modules= 159%

Analysis:

2 Applications used throughout the week

Module-based Licensing

- 16 separate licenses would be required

Value-Based Licensing

- 1300 tokens would cover usage

Module-based Licensing is 60% more cost effective

How to Estimate Number the Number of Tokens You Need

Process:

- 1. Estimate your peak usage requirements – number of products that may be in use at one time**
- 2. Provide this information to the Siemens Digital Industries Account Manager**
- 3. They can work up an analysis like in previous slides and tell you whether token licensing is a good fit for your company**
- 4. Don't forget to consider what your future requirements may be**

Typical Usage Cases:

Next slides show how many tokens are needed to run typical combinations of products

More complicated usages requires analysis described above

Token Scenarios

How to understand the tables

Example Token Amounts are labeled at the top for columns

Individual products or combination of products make up the rows

White shading in the token column means that the product has not been considered with the combination of products


Green shading in the token column means that the product or combination of products can be run using the number of tokens for that column


Red shading in the token column means that the product or combination of products cannot be run using the number of tokens for that column

			Token Amount		
Product ID	Product Name	Add	100	150	200
Individual					
SC30508	Simcenter Flow		☐	☐	☐
SC30519	Simcenter Electronic Systems Cooling		–	☐	☐
Advanced Flow Combination					
SC30508	Simcenter Flow with		☐	☐	☐
SC30560	Simcenter Advanced Fluid Modeling	n	☐	☐	☐
SC30516	Simcenter Advanced Flow	y	☐	☐	☐
SC30537	Simcenter Thermal/Flow DMP	n	☐	☐	☐
ESC Combination					
SC30519	Simcenter Electronic Systems Cooling with		–	☐	☐
SC30560	Simcenter Advanced Fluid Modeling	y	–	☐	☐
SC30537	Simcenter Thermal/Flow DMP	n	☐	☐	☐

For example:

- SC30519 needs at least 150 tokens to run
- SC30508 + SC305016 can be run with 100 tokens
- SC30519 + SC306560 needs at least 150 tokens to run

 Not enough tokens

 Sufficient tokens

Token Scenarios

More Product Combinations

There are many possible capability combinations with tokens. The next slides lists typical combinations and the needed amount of tokens.

Your Account Manager can run this Token Calculator to explore other combinations of products

**For more
combinations
use the
Token
Calculator**



Token Scenarios

Simcenter 3D Pre-Processing

			Token Amount							
Product ID	Product Name	Add	50	100	150	200	250	300	350	400
Individual										
SC30536	Simcenter 3D Environment for Samcef		<div></div>	<div></div>	<div></div>	<div></div>	<div></div>	<div></div>	<div></div>	<div></div>
SC30549	Simcenter 3D Environment for MSC Nastran		<div></div>	<div></div>	<div></div>	<div></div>	<div></div>	<div></div>	<div></div>	<div></div>
SC30550	Simcenter 3D Environment for Ansys		<div></div>	<div></div>	<div></div>	<div></div>	<div></div>	<div></div>	<div></div>	<div></div>
SC30551	Simcenter 3D Environment for ABAQUS		<div></div>	<div></div>	<div></div>	<div></div>	<div></div>	<div></div>	<div></div>	<div></div>
SC30523	Simcenter 3D Environment for LS-Dyna		<div></div>	<div></div>	<div></div>	<div></div>	<div></div>	<div></div>	<div></div>	<div></div>
SC30570	Simcenter 3D BEM Acoustics Environment		<div></div>	<div></div>	<div></div>	<div></div>	<div></div>	<div></div>	<div></div>	<div></div>
SC30601	Simcenter 3D Aerostructure Environment		<div></div>	<div></div>	<div></div>	<div></div>	<div></div>	<div></div>	<div></div>	<div></div>
SC30504	Simcenter 3D Rotor Modeling		<div></div>	<div></div>	<div></div>	<div></div>	<div></div>	<div></div>	<div></div>	<div></div>
SC30604	Simcenter 3D Environment for Ray Acoustics		<div></div>	<div></div>	<div></div>	<div></div>	<div></div>	<div></div>	<div></div>	<div></div>
SC30522	Simcenter 3D Laminate Composites		<div></div>	<div></div>	<div></div>	<div></div>	<div></div>	<div></div>	<div></div>	<div></div>
SC30560	Simcenter 3D Advanced Fluid Modeling		<div></div>	<div></div>	<div></div>	<div></div>	<div></div>	<div></div>	<div></div>	<div></div>
SC30620	Simcenter 3D Meshing for Acoustics		<div></div>	<div></div>	<div></div>	<div></div>	<div></div>	<div></div>	<div></div>	<div></div>

Not enough tokens

Sufficient tokens

Token Scenarios

Simcenter Thermal

			Token Amount							
Product ID	Product Name	Add	50	100	150	200	250	300	350	400
Individual										
SC30507	Simcenter 3D Thermal		<input type="checkbox"/>	<input type="checkbox"/>	<input type="checkbox"/>	<input type="checkbox"/>	<input type="checkbox"/>	<input type="checkbox"/>	<input type="checkbox"/>	<input type="checkbox"/>
SC30517	Simcenter 3D Space Systems Thermal		-	-	<input type="checkbox"/>	<input type="checkbox"/>	<input type="checkbox"/>	<input type="checkbox"/>	<input type="checkbox"/>	<input type="checkbox"/>
Advanced Thermal Combination										
SC30507	Simcenter 3D Thermal with		-	<input type="checkbox"/>	<input type="checkbox"/>	<input type="checkbox"/>	<input type="checkbox"/>	<input type="checkbox"/>	<input type="checkbox"/>	<input type="checkbox"/>
SC30515	Simcenter 3D Advanced Thermal	y	-	<input type="checkbox"/>	<input type="checkbox"/>	<input type="checkbox"/>	<input type="checkbox"/>	<input type="checkbox"/>	<input type="checkbox"/>	<input type="checkbox"/>
SC30537	Simcenter 3D Thermal/Flow DMP	n	<input type="checkbox"/>	<input type="checkbox"/>	<input type="checkbox"/>	<input type="checkbox"/>	<input type="checkbox"/>	<input type="checkbox"/>	<input type="checkbox"/>	<input type="checkbox"/>
SST Combination										
SC30517	Simcenter 3D Space Systems Thermal with		-	-	<input type="checkbox"/>	<input type="checkbox"/>	<input type="checkbox"/>	<input type="checkbox"/>	<input type="checkbox"/>	<input type="checkbox"/>
SC30537	Simcenter 3D Thermal/Flow DMP	n	<input type="checkbox"/>	<input type="checkbox"/>	<input type="checkbox"/>	<input type="checkbox"/>	<input type="checkbox"/>	<input type="checkbox"/>	<input type="checkbox"/>	<input type="checkbox"/>
Advanced Thermal Combination										
SC30507	Simcenter 3D Thermal with		-	-	<input type="checkbox"/>	<input type="checkbox"/>	<input type="checkbox"/>	<input type="checkbox"/>	<input type="checkbox"/>	<input type="checkbox"/>
SC30515	Simcenter 3D Advanced Thermal	y	-	-	<input type="checkbox"/>	<input type="checkbox"/>	<input type="checkbox"/>	<input type="checkbox"/>	<input type="checkbox"/>	<input type="checkbox"/>
SC30537	Simcenter 3D Thermal/Flow DMP	y	-	-	<input type="checkbox"/>	<input type="checkbox"/>	<input type="checkbox"/>	<input type="checkbox"/>	<input type="checkbox"/>	<input type="checkbox"/>
SST Combination										
SC30517	Simcenter 3D Space Systems Thermal with		-	-	-	<input type="checkbox"/>	<input type="checkbox"/>	<input type="checkbox"/>	<input type="checkbox"/>	<input type="checkbox"/>
SC30537	Simcenter 3D Thermal/Flow DMP	y	-	-	-	<input type="checkbox"/>	<input type="checkbox"/>	<input type="checkbox"/>	<input type="checkbox"/>	<input type="checkbox"/>



Not enough tokens

Sufficient tokens

Token Scenarios

Simcenter Flow

			Token Amount							
Product ID	Product Name	Add	50	100	150	200	250	300	350	400
Individual										
SC30508	Simcenter 3D Flow		<div></div>	<div></div>	<div></div>	<div></div>	<div></div>	<div></div>	<div></div>	<div></div>
SC30519	Simcenter 3D Electronic Systems Cooling		<div></div>	<div></div>	<div></div>	<div></div>	<div></div>	<div></div>	<div></div>	<div></div>
Advanced Flow Combination										
SC30508	Simcenter 3D Flow with		<div></div>	<div></div>	<div></div>	<div></div>	<div></div>	<div></div>	<div></div>	<div></div>
SC30560	Simcenter 3D Advanced Fluid Modeling	n	<div></div>	<div></div>	<div></div>	<div></div>	<div></div>	<div></div>	<div></div>	<div></div>
SC30516	Simcenter 3D Advanced Flow	y	<div></div>	<div></div>	<div></div>	<div></div>	<div></div>	<div></div>	<div></div>	<div></div>
SC30537	Simcenter 3D Thermal/Flow DMP	n	<div></div>	<div></div>	<div></div>	<div></div>	<div></div>	<div></div>	<div></div>	<div></div>
ESC Combination										
SC30519	Simcenter 3D Electronic Systems Cooling with		<div></div>	<div></div>	<div></div>	<div></div>	<div></div>	<div></div>	<div></div>	<div></div>
SC30560	Simcenter 3D Advanced Fluid Modeling	y	<div></div>	<div></div>	<div></div>	<div></div>	<div></div>	<div></div>	<div></div>	<div></div>
SC30537	Simcenter 3D Thermal/Flow DMP	n	<div></div>	<div></div>	<div></div>	<div></div>	<div></div>	<div></div>	<div></div>	<div></div>
Advanced Flow Combination										
SC30508	Simcenter 3D Flow with		<div></div>	<div></div>	<div></div>	<div></div>	<div></div>	<div></div>	<div></div>	<div></div>
SC30560	Simcenter 3D Advanced Fluid Modeling	y	<div></div>	<div></div>	<div></div>	<div></div>	<div></div>	<div></div>	<div></div>	<div></div>
SC30516	Simcenter 3D Advanced Flow	y	<div></div>	<div></div>	<div></div>	<div></div>	<div></div>	<div></div>	<div></div>	<div></div>
SC30537	Simcenter 3D Thermal/Flow DMP	y	<div></div>	<div></div>	<div></div>	<div></div>	<div></div>	<div></div>	<div></div>	<div></div>
ESC Combination										
SC30519	Simcenter 3D Electronic Systems Cooling with		<div></div>	<div></div>	<div></div>	<div></div>	<div></div>	<div></div>	<div></div>	<div></div>
SC30560	Simcenter 3D Advanced Fluid Modeling	y	<div></div>	<div></div>	<div></div>	<div></div>	<div></div>	<div></div>	<div></div>	<div></div>
SC30537	Simcenter 3D Thermal/Flow DMP	y	<div></div>	<div></div>	<div></div>	<div></div>	<div></div>	<div></div>	<div></div>	<div></div>

Not enough tokens

Sufficient tokens

Token Scenarios

Simcenter Thermal/Flow

			Token Amount							
Product ID	Product Name	Add	50	100	150	200	250	300	350	400
Individual										
SC30507	Simcenter 3D Thermal		<input type="checkbox"/>	<input type="checkbox"/>	<input type="checkbox"/>	<input type="checkbox"/>	<input type="checkbox"/>	<input type="checkbox"/>	<input type="checkbox"/>	<input type="checkbox"/>
SC30508	Simcenter 3D Flow		<input type="checkbox"/>	<input type="checkbox"/>	<input type="checkbox"/>	<input type="checkbox"/>	<input type="checkbox"/>	<input type="checkbox"/>	<input type="checkbox"/>	<input type="checkbox"/>
Thermal/Flow Coupled Combination										
SC30507	Simcenter 3D Thermal and		-	<input type="checkbox"/>	<input type="checkbox"/>	<input type="checkbox"/>	<input type="checkbox"/>	<input type="checkbox"/>	<input type="checkbox"/>	<input type="checkbox"/>
SC30508	Simcenter 3D Flow with		-	<input type="checkbox"/>	<input type="checkbox"/>	<input type="checkbox"/>	<input type="checkbox"/>	<input type="checkbox"/>	<input type="checkbox"/>	<input type="checkbox"/>
SC30515	Simcenter 3D Advanced Thermal	n	<input type="checkbox"/>	<input type="checkbox"/>	<input type="checkbox"/>	<input type="checkbox"/>	<input type="checkbox"/>	<input type="checkbox"/>	<input type="checkbox"/>	<input type="checkbox"/>
SC30516	Simcenter 3D Advanced Flow	n	<input type="checkbox"/>	<input type="checkbox"/>	<input type="checkbox"/>	<input type="checkbox"/>	<input type="checkbox"/>	<input type="checkbox"/>	<input type="checkbox"/>	<input type="checkbox"/>
SC30560	Simcenter 3D Advanced Fluid Modeling	n	<input type="checkbox"/>	<input type="checkbox"/>	<input type="checkbox"/>	<input type="checkbox"/>	<input type="checkbox"/>	<input type="checkbox"/>	<input type="checkbox"/>	<input type="checkbox"/>
SC30537	Simcenter 3D Thermal/Flow DMP	n	<input type="checkbox"/>	<input type="checkbox"/>	<input type="checkbox"/>	<input type="checkbox"/>	<input type="checkbox"/>	<input type="checkbox"/>	<input type="checkbox"/>	<input type="checkbox"/>
Thermal/Flow Coupled Combination										
SC30507	Simcenter 3D Thermal and		-	-	-	<input type="checkbox"/>	<input type="checkbox"/>	<input type="checkbox"/>	<input type="checkbox"/>	<input type="checkbox"/>
SC30508	Simcenter 3D Flow with		-	-	-	<input type="checkbox"/>	<input type="checkbox"/>	<input type="checkbox"/>	<input type="checkbox"/>	<input type="checkbox"/>
SC30515	Simcenter 3D Advanced Thermal	y	-	-	-	<input type="checkbox"/>	<input type="checkbox"/>	<input type="checkbox"/>	<input type="checkbox"/>	<input type="checkbox"/>
SC30516	Simcenter 3D Advanced Flow	y	-	-	-	<input type="checkbox"/>	<input type="checkbox"/>	<input type="checkbox"/>	<input type="checkbox"/>	<input type="checkbox"/>
SC30560	Simcenter 3D Advanced Fluid Modeling	n	<input type="checkbox"/>	<input type="checkbox"/>	<input type="checkbox"/>	<input type="checkbox"/>	<input type="checkbox"/>	<input type="checkbox"/>	<input type="checkbox"/>	<input type="checkbox"/>
SC30537	Simcenter 3D Thermal/Flow DMP	n	<input type="checkbox"/>	<input type="checkbox"/>	<input type="checkbox"/>	<input type="checkbox"/>	<input type="checkbox"/>	<input type="checkbox"/>	<input type="checkbox"/>	<input type="checkbox"/>

 Not enough tokens

 Sufficient tokens

Token Scenarios

Simcenter Structures with Simcenter Nastran Add-Ons

Product ID	Product Name	Add	Token Amount							
			50	100	150	200	250	300	350	400
Individual										
SC13500	Simcenter 3D Structures (no tokens)		☐	☐	☐	☐	☐	☐	☐	☐
Dynamics Combination										
SC13500	Simcenter 3D Structures and		☐	☐	☐	☐	☐	☐	☐	☐
NXN004	Simcenter Nastran Dynamic Response with		☐	☐	☐	☐	☐	☐	☐	☐
	Simcenter Nastran Superelement	n	☐	☐	☐	☐	☐	☐	☐	☐
	Simcenter Nastran DMAP	n	☐	☐	☐	☐	☐	☐	☐	☐
NXN010	Simcenter Nastran DMP	n	☐	☐	☐	☐	☐	☐	☐	☐
	Simcenter Nastran RDMODES	n	☐	☐	☐	☐	☐	☐	☐	☐
	Simcenter Nastran Reduced Representations	n	☐	☐	☐	☐	☐	☐	☐	☐
SC30593	Simcenter 3D Noise & Vibration Modeling	n	☐	☐	☐	☐	☐	☐	☐	☐
Acoustics Combination										
SC13500	Simcenter 3D Structures and		-	-	☐	☐	☐	☐	☐	☐
NXN004	Simcenter Nastran Dynamic Response with		-	-	☐	☐	☐	☐	☐	☐
NXN015	Simcenter Nastran Advanced Acoustics with		-	-	☐	☐	☐	☐	☐	☐
	Simcenter Nastran Superelement	n	☐	☐	☐	☐	☐	☐	☐	☐
	Simcenter Nastran DMAP	n	☐	☐	☐	☐	☐	☐	☐	☐
NXN010	Simcenter Nastran DMP	n	☐	☐	☐	☐	☐	☐	☐	☐
SC30593	Simcenter 3D ATV	n	☐	☐	☐	☐	☐	☐	☐	☐
	Simcenter Nastran RDMODES	n	☐	☐	☐	☐	☐	☐	☐	☐
SC30595	Simcenter 3D 3D Aero-Vibro-Acoustics	n	☐	☐	☐	☐	☐	☐	☐	☐
SC30596	Simcenter 3D Noise & Vibration Modeling	y	-	-	☐	☐	☐	☐	☐	☐



Not enough tokens

Sufficient tokens

Token Scenarios

Simcenter Structures with Simcenter Nastran Add-Ons (more combinations)

			Token Amount							
Product ID	Product Name	Add	50	100	150	200	250	300	350	400
Individual										
SC13500	Simcenter 3D Structures (no tokens)		<input type="checkbox"/>	<input type="checkbox"/>	<input type="checkbox"/>	<input type="checkbox"/>	<input type="checkbox"/>	<input type="checkbox"/>	<input type="checkbox"/>	<input type="checkbox"/>
Aero-Elastic Combination										
SC13500	Simcenter 3D Structures and		<input type="checkbox"/>	<input type="checkbox"/>	<input type="checkbox"/>	<input type="checkbox"/>	<input type="checkbox"/>	<input type="checkbox"/>	<input type="checkbox"/>	<input type="checkbox"/>
	Simcenter Nastran Aero- Elastic with		<input type="checkbox"/>	<input type="checkbox"/>	<input type="checkbox"/>	<input type="checkbox"/>	<input type="checkbox"/>	<input type="checkbox"/>	<input type="checkbox"/>	<input type="checkbox"/>
	Simcenter Nastran Superelement	n	<input type="checkbox"/>	<input type="checkbox"/>	<input type="checkbox"/>	<input type="checkbox"/>	<input type="checkbox"/>	<input type="checkbox"/>	<input type="checkbox"/>	<input type="checkbox"/>
	Simcenter Nastran DMAP	n	<input type="checkbox"/>	<input type="checkbox"/>	<input type="checkbox"/>	<input type="checkbox"/>	<input type="checkbox"/>	<input type="checkbox"/>	<input type="checkbox"/>	<input type="checkbox"/>
NXN010	Simcenter Nastran DMP	n	<input type="checkbox"/>	<input type="checkbox"/>	<input type="checkbox"/>	<input type="checkbox"/>	<input type="checkbox"/>	<input type="checkbox"/>	<input type="checkbox"/>	<input type="checkbox"/>
Optimization Combination										
SC13500	Simcenter 3D Structures and		<input type="checkbox"/>	<input type="checkbox"/>	<input type="checkbox"/>	<input type="checkbox"/>	<input type="checkbox"/>	<input type="checkbox"/>	<input type="checkbox"/>	<input type="checkbox"/>
NXN016	Simcenter Nastran Topology Optimization		<input type="checkbox"/>	<input type="checkbox"/>	<input type="checkbox"/>	<input type="checkbox"/>	<input type="checkbox"/>	<input type="checkbox"/>	<input type="checkbox"/>	<input type="checkbox"/>
Non-Linear Combination										
SC13500	Simcenter 3D Structures and		-	<input type="checkbox"/>	<input type="checkbox"/>	<input type="checkbox"/>	<input type="checkbox"/>	<input type="checkbox"/>	<input type="checkbox"/>	<input type="checkbox"/>
NXN030	Simcenter Nastran Multistep Nonlinear with		-	<input type="checkbox"/>	<input type="checkbox"/>	<input type="checkbox"/>	<input type="checkbox"/>	<input type="checkbox"/>	<input type="checkbox"/>	<input type="checkbox"/>
NXN010	Simcenter Nastran DMP	n	<input type="checkbox"/>	<input type="checkbox"/>	<input type="checkbox"/>	<input type="checkbox"/>	<input type="checkbox"/>	<input type="checkbox"/>	<input type="checkbox"/>	<input type="checkbox"/>
Rotor Dynamics Combination										
SC13500	Simcenter 3D Structures and		-	-	<input type="checkbox"/>	<input type="checkbox"/>	<input type="checkbox"/>	<input type="checkbox"/>	<input type="checkbox"/>	<input type="checkbox"/>
SC30504	Simcenter 3D Rotor Modeling and		-	-	<input type="checkbox"/>	<input type="checkbox"/>	<input type="checkbox"/>	<input type="checkbox"/>	<input type="checkbox"/>	<input type="checkbox"/>
NXN040	Simcenter Nastran Rotor with		-	-	<input type="checkbox"/>	<input type="checkbox"/>	<input type="checkbox"/>	<input type="checkbox"/>	<input type="checkbox"/>	<input type="checkbox"/>
NXN010	Simcenter Nastran DMP	n	<input type="checkbox"/>	<input type="checkbox"/>	<input type="checkbox"/>	<input type="checkbox"/>	<input type="checkbox"/>	<input type="checkbox"/>	<input type="checkbox"/>	<input type="checkbox"/>
Load Identification Combination										
SC13500	Simcenter 3D Structures and		<input type="checkbox"/>	<input type="checkbox"/>	<input type="checkbox"/>	<input type="checkbox"/>	<input type="checkbox"/>	<input type="checkbox"/>	<input type="checkbox"/>	<input type="checkbox"/>
SC30501	Simcenter 3D Load Identification		<input type="checkbox"/>	<input type="checkbox"/>	<input type="checkbox"/>	<input type="checkbox"/>	<input type="checkbox"/>	<input type="checkbox"/>	<input type="checkbox"/>	<input type="checkbox"/>



Not enough tokens

Sufficient tokens

Token Scenarios

Simcenter Nastran Enterprise

			Token Amount									
Product ID	Product Name	Add	50	100	150	200	250	300	350	400	450	500
Individual												
NXN001	Simcenter Nastran Basic		-	-	□	□	□	□	□	□	□	□
Dynamics Combination												
NXN001	Simcenter Nastran Basic and		-	-	□	□	□	□	□	□	□	□
NXN004	Simcenter Nastran Dynamic Response with		-	-	□	□	□	□	□	□	□	□
	Simcenter Nastran Superelement	n	□	□	□	□	□	□	□	□	□	□
	Simcenter Nastran DMAP	n	□	□	□	□	□	□	□	□	□	□
NXN010	Simcenter Nastran DMP	n	□	□	□	□	□	□	□	□	□	□
	Simcenter Nastran RDMODES	n	□	□	□	□	□	□	□	□	□	□
	Simcenter Nastran Reduced Representations	n	□	□	□	□	□	□	□	□	□	□
SC30596	Simcenter 3D Noise & Vibration Modeling	n	□	□	□	□	□	□	□	□	□	□
Acoustics Combination												
NXN001	Simcenter Nastran Basic and		-	-	-	□	□	□	□	□	□	□
NXN004	Simcenter Nastran Dynamic Response and		-	-	-	□	□	□	□	□	□	□
NXN015	Simcenter Nastran Advanced Acoustics with		-	-	-	□	□	□	□	□	□	□
	Simcenter Nastran Superelement	n	□	□	□	□	□	□	□	□	□	□
	Simcenter Nastran DMAP	n	□	□	□	□	□	□	□	□	□	□
NXN010	Simcenter Nastran DMP	n	□	□	□	□	□	□	□	□	□	□
SC30593	Simcenter 3D ATV	n	□	□	□	□	□	□	□	□	□	□
	Simcenter Nastran RDMODES	n	□	□	□	□	□	□	□	□	□	□
SC30595	Simcenter 3D Aero-Vibro-Acoustics	n	□	□	□	□	□	□	□	□	□	□
SC30596	Simcenter 3D Noise & Vibration Modeling	n	□	□	□	□	□	□	□	□	□	□

Not enough tokens

Sufficient tokens

SIEMENS

Token Scenarios

Simcenter Nastran Enterprise (more combinations)

			Token Amount									
Product ID	Product Name	Add	50	100	150	200	250	300	350	400	450	500
Individual												
NXN001	Simcenter Nastran Basic		-	-	☐	☐	☐	☐	☐	☐	☐	☐
Aero-Elastic Combination												
NXN001	Simcenter Nastran Basic and		-	-	☐	☐	☐	☐	☐	☐	☐	☐
	Simcenter Nastran Aero- Elastic with		-	-	☐	☐	☐	☐	☐	☐	☐	☐
	Simcenter Nastran Superelement	n	☐	☐	☐	☐	☐	☐	☐	☐	☐	☐
	Simcenter Nastran DMAP	n	☐	☐	☐	☐	☐	☐	☐	☐	☐	☐
NXN010	Simcenter Nastran DMP	n	☐	☐	☐	☐	☐	☐	☐	☐	☐	☐
Optimization Combination												
NXN001	Simcenter Nastran Basic and		-	-	☐	☐	☐	☐	☐	☐	☐	☐
NXN016	Simcenter Nastran Topology Optimization		-	-	☐	☐	☐	☐	☐	☐	☐	☐
Non-Linear Combination												
NXN001	Simcenter Nastran Basic and		-	-	-	☐	☐	☐	☐	☐	☐	☐
NXN030	Simcenter Nastran Multistep Nonlinear with		-	-	-	☐	☐	☐	☐	☐	☐	☐
NXN010	Simcenter Nastran DMP	n	☐	☐	☐	☐	☐	☐	☐	☐	☐	☐
Rotor Dynamics Combination												
NXN001	Simcenter Nastran Basic and		-	-	-	☐	☐	☐	☐	☐	☐	☐
NXN040	Simcenter Nastran Rotor (SOL414) with		-	-	-	☐	☐	☐	☐	☐	☐	☐
NXN010	Simcenter Nastran DMP	n	☐	☐	☐	☐	☐	☐	☐	☐	☐	☐
SC30504	Simcenter 3D Rotor Modeling	n	☐	☐	☐	☐	☐	☐	☐	☐	☐	☐

Not enough tokens

Sufficient tokens



Token Scenarios

Simcenter Nastran for NVH

			Token Amount							
Product ID	Product Name	Add	50	100	150	200	250	300	350	400
Simcenter Nastran Hybrid NVH Enterprise Combination										
NXN001	Simcenter Nastran Basic and		-	-	-	-	☐	☐	☐	☐
NXN004	Simcenter Nastran Dynamic Response and		-	-	-	-	☐	☐	☐	☐
SC30596	Simcenter 3D Noise & Vibration Modeling with		-	-	-	-	☐	☐	☐	☐
	Simcenter Nastran Superelement	n	☐	☐	☐	☐	☐	☐	☐	☐
	Simcenter Nastran DMAP	n	☐	☐	☐	☐	☐	☐	☐	☐
NXN010	Simcenter Nastran DMP	n	☐	☐	☐	☐	☐	☐	☐	☐
	Simcenter Nastran RDMODES	y	-	-	-	-	☐	☐	☐	☐
	Simcenter Nastran Reduced Representations	y	-	-	-	-	☐	☐	☐	☐
Simcenter Nastran Hybrid NVH Desktop Combination										
SC13500	Simcenter 3D Structures and		-	-	☐	☐	☐	☐	☐	☐
NXN004	Simcenter Nastran Dynamic Response and		-	-	☐	☐	☐	☐	☐	☐
SC30596	Simcenter 3D Noise & Vibration Modeling with		-	-	☐	☐	☐	☐	☐	☐
	Simcenter Nastran Superelement	n	☐	☐	☐	☐	☐	☐	☐	☐
	Simcenter Nastran DMAP	n	☐	☐	☐	☐	☐	☐	☐	☐
NXN010	Simcenter Nastran DMP	n	☐	☐	☐	☐	☐	☐	☐	☐
	Simcenter Nastran RDMODES	n	☐	☐	☐	☐	☐	☐	☐	☐
	Simcenter Nastran Reduced Representations	y	-	-	☐	☐	☐	☐	☐	☐

Not enough tokens

Sufficient tokens

Token Scenarios

Simcenter Acoustics (BEM)

			Token Amount									
Product ID	Product Name	Add	50	100	150	200	250	300	350	400	450	500
Simcenter 3D BEM Individual Products												
SC30570	Simcenter 3D BEM Acoustics Environment		<div></div>	<div></div>	<div></div>	<div></div>	<div></div>	<div></div>	<div></div>	<div></div>	<div></div>	<div></div>
SC30620	Simcenter 3D Meshing for Acoustics		<div></div>	<div></div>	<div></div>	<div></div>	<div></div>	<div></div>	<div></div>	<div></div>	<div></div>	<div></div>
SC30580	Simcenter 3D BEM Acoustics Solver		<div></div>	<div></div>	<div></div>	<div></div>	<div></div>	<div></div>	<div></div>	<div></div>	<div></div>	<div></div>
SC30594	Simcenter 3D Acoustics HPC		<div></div>	<div></div>	<div></div>	<div></div>	<div></div>	<div></div>	<div></div>	<div></div>	<div></div>	<div></div>
SC30604	Simcenter 3D Environment for Ray Acoustics		<div></div>	<div></div>	<div></div>	<div></div>	<div></div>	<div></div>	<div></div>	<div></div>	<div></div>	<div></div>
Simcenter 3D BEM Acoustics Combination												
SC30570	Simcenter 3D BEM Acoustics Environment and		<div></div>	<div></div>	<div></div>	<div></div>	<div></div>	<div></div>	<div></div>	<div></div>	<div></div>	<div></div>
SC30580	Simcenter 3D BEM Acoustics Solver with		<div></div>	<div></div>	<div></div>	<div></div>	<div></div>	<div></div>	<div></div>	<div></div>	<div></div>	<div></div>
SC30620	Simcenter 3D Meshing for Acoustics	n	<div></div>	<div></div>	<div></div>	<div></div>	<div></div>	<div></div>	<div></div>	<div></div>	<div></div>	<div></div>
SC30594	Simcenter 3D Acoustics HPC	n	<div></div>	<div></div>	<div></div>	<div></div>	<div></div>	<div></div>	<div></div>	<div></div>	<div></div>	<div></div>
SC30596	Simcenter 3D Noise & Vibration Modeling	n	<div></div>	<div></div>	<div></div>	<div></div>	<div></div>	<div></div>	<div></div>	<div></div>	<div></div>	<div></div>
SC30593	Simcenter 3D ATV	n	<div></div>	<div></div>	<div></div>	<div></div>	<div></div>	<div></div>	<div></div>	<div></div>	<div></div>	<div></div>
Simcenter 3D BEM Acoustics Combination												
SC30570	Simcenter 3D BEM Acoustics Environment and		<div></div>	<div></div>	<div></div>	<div></div>	<div></div>	<div></div>	<div></div>	<div></div>	<div></div>	<div></div>
SC30580	Simcenter 3D BEM Acoustics Solver with		<div></div>	<div></div>	<div></div>	<div></div>	<div></div>	<div></div>	<div></div>	<div></div>	<div></div>	<div></div>
SC30620	Simcenter 3D Meshing for Acoustics	y	<div></div>	<div></div>	<div></div>	<div></div>	<div></div>	<div></div>	<div></div>	<div></div>	<div></div>	<div></div>
SC30594	Simcenter 3D Acoustics HPC	y	<div></div>	<div></div>	<div></div>	<div></div>	<div></div>	<div></div>	<div></div>	<div></div>	<div></div>	<div></div>
SC30596	Simcenter 3D Noise & Vibration Modeling	y	<div></div>	<div></div>	<div></div>	<div></div>	<div></div>	<div></div>	<div></div>	<div></div>	<div></div>	<div></div>
SC30593	Simcenter 3D ATV	y	<div></div>	<div></div>	<div></div>	<div></div>	<div></div>	<div></div>	<div></div>	<div></div>	<div></div>	<div></div>

Not enough tokens

Sufficient tokens

Token Scenarios

Simcenter Acoustics (FEM)

			Token Amount									
Product ID	Product Name	Add	50	100	150	200	250	300	350	400	450	500
Nastran FEM Acoustics Enterprise Combination												
NXN001	Simcenter Nastran Basic and		-	-	-	-	-	-	□	□	□	□
NXN004	Simcenter Nastran Dynamic Response with		-	-	-	-	-	-	□	□	□	□
NXN015	Simcenter Nastran Advanced Acoustics	y	-	-	-	-	-	-	□	□	□	□
SC30594	Simcenter 3D Acoustics HPC	y	-	-	-	-	-	-	□	□	□	□
SC30593	Simcenter 3D ATV	y	-	-	-	-	-	-	□	□	□	□
SC30595	Simcenter 3D Aero-Vibro-Acoustics	y	-	-	-	-	-	-	□	□	□	□
	Simcenter Nastran RDMODES	y	-	-	-	-	-	-	□	□	□	□
	Simcenter Nastran Superelement	n	□	□	□	□	□	□	□	□	□	□
	Simcenter Nastran Reduced Representations	n	□	□	□	□	□	□	□	□	□	□
	Simcenter Nastran DMAP	n	□	□	□	□	□	□	□	□	□	□
Nastran FEM Acoustics Desktop Combination												
SC13500	Simcenter 3D Structures and		-	-	-	-	-	-	□	□	□	□
SC30596	Simcenter 3D Noise & Vibration Modeling and		-	-	-	-	-	-	□	□	□	□
NXN004	Simcenter Nastran Dynamic Response with		-	-	-	-	-	-	□	□	□	□
NXN015	Simcenter Nastran Advanced Acoustics	y	-	-	-	-	-	-	□	□	□	□
SC30620	Simcenter 3D Meshing for Acoustics	y	-	-	-	-	-	-	□	□	□	□
SC30594	Simcenter 3D Acoustics HPC	y	-	-	-	-	-	-	□	□	□	□
SC30593	Simcenter 3D ATV	y	-	-	-	-	-	-	□	□	□	□
SC30595	Simcenter 3D Aero-Vibro-Acoustics	y	-	-	-	-	-	-	□	□	□	□
	Simcenter Nastran RDMODES	n	□	□	□	□	□	□	□	□	□	□
	Simcenter Nastran Superelement	n	□	□	□	□	□	□	□	□	□	□
	Simcenter Nastran Reduced Representations	n	□	□	□	□	□	□	□	□	□	□
	Simcenter Nastran DMAP	n	□	□	□	□	□	□	□	□	□	□



Not enough tokens

Sufficient tokens **SIEMENS**

Token Scenarios Samcef Linear

			Token Amount							
Product ID	Product Name	Add	50	100	150	200	250	300	350	400
Individual										
SC30536	Simcenter 3D Environment for Samcef		<input type="checkbox"/>	<input type="checkbox"/>	<input type="checkbox"/>	<input type="checkbox"/>	<input type="checkbox"/>	<input type="checkbox"/>	<input type="checkbox"/>	<input type="checkbox"/>
SCSCF0151	Simcenter Samcef Bacon		<input type="checkbox"/>	<input type="checkbox"/>	<input type="checkbox"/>	<input type="checkbox"/>	<input type="checkbox"/>	<input type="checkbox"/>	<input type="checkbox"/>	<input type="checkbox"/>
Linear Statics Combination										
SC30536	Simcenter Environment for Samcef and		-	<input type="checkbox"/>	<input type="checkbox"/>	<input type="checkbox"/>	<input type="checkbox"/>	<input type="checkbox"/>	<input type="checkbox"/>	<input type="checkbox"/>
SCSCF-0152	Asef Solver with		-	<input type="checkbox"/>	<input type="checkbox"/>	<input type="checkbox"/>	<input type="checkbox"/>	<input type="checkbox"/>	<input type="checkbox"/>	<input type="checkbox"/>
SCSCF-1152	Asef Parallel Solver	n	<input type="checkbox"/>	<input type="checkbox"/>	<input type="checkbox"/>	<input type="checkbox"/>	<input type="checkbox"/>	<input type="checkbox"/>	<input type="checkbox"/>	<input type="checkbox"/>
Linear Buckling Combination										
SC30536	Simcenter Environment for Samcef and		-	<input type="checkbox"/>	<input type="checkbox"/>	<input type="checkbox"/>	<input type="checkbox"/>	<input type="checkbox"/>	<input type="checkbox"/>	<input type="checkbox"/>
SCSCF-0156	Stabi Solver with		-	<input type="checkbox"/>	<input type="checkbox"/>	<input type="checkbox"/>	<input type="checkbox"/>	<input type="checkbox"/>	<input type="checkbox"/>	<input type="checkbox"/>
SCSCF-1156	Stabi Parallel Solver	n	<input type="checkbox"/>	<input type="checkbox"/>	<input type="checkbox"/>	<input type="checkbox"/>	<input type="checkbox"/>	<input type="checkbox"/>	<input type="checkbox"/>	<input type="checkbox"/>
Linear Modal Combination										
SC30536	Simcenter Environment for Samcef and		-	<input type="checkbox"/>	<input type="checkbox"/>	<input type="checkbox"/>	<input type="checkbox"/>	<input type="checkbox"/>	<input type="checkbox"/>	<input type="checkbox"/>
SCSCF-0154	Dynam Solver with		-	<input type="checkbox"/>	<input type="checkbox"/>	<input type="checkbox"/>	<input type="checkbox"/>	<input type="checkbox"/>	<input type="checkbox"/>	<input type="checkbox"/>
SCSCF-1154	Dynam Parallel Solver	n	<input type="checkbox"/>	<input type="checkbox"/>	<input type="checkbox"/>	<input type="checkbox"/>	<input type="checkbox"/>	<input type="checkbox"/>	<input type="checkbox"/>	<input type="checkbox"/>
Linear Dynamic Response Combination										
SC30536	Simcenter Environment for Samcef and		-	<input type="checkbox"/>	<input type="checkbox"/>	<input type="checkbox"/>	<input type="checkbox"/>	<input type="checkbox"/>	<input type="checkbox"/>	<input type="checkbox"/>
SCSCF-0155	Repdyn Solver		-	<input type="checkbox"/>	<input type="checkbox"/>	<input type="checkbox"/>	<input type="checkbox"/>	<input type="checkbox"/>	<input type="checkbox"/>	<input type="checkbox"/>
Linear Random Response Combination										
SC30536	Simcenter Environment for Samcef and		-	<input type="checkbox"/>	<input type="checkbox"/>	<input type="checkbox"/>	<input type="checkbox"/>	<input type="checkbox"/>	<input type="checkbox"/>	<input type="checkbox"/>
SCSCF-0158	Spectral Solver		-	<input type="checkbox"/>	<input type="checkbox"/>	<input type="checkbox"/>	<input type="checkbox"/>	<input type="checkbox"/>	<input type="checkbox"/>	<input type="checkbox"/>



Not enough tokens

Sufficient tokens

Token Scenarios Samcef Non-Linear

			Token Amount							
Product ID	Product Name	Add	50	100	150	200	250	300	350	400
Individual										
SC30536	Simcenter 3D Environment for Samcef		☐	☐	☐	☐	☐	☐	☐	☐
SCSCF0151	Simcenter Samcef Bacon		☐	☐	☐	☐	☐	☐	☐	☐
Nonlinear Combination										
SC30536	Simcenter 3D Environment for Samcef and		-	-	☐	☐	☐	☐	☐	☐
SCMEC0181	Simcenter Samcef Mecano Non-Linear Mechanical Solver with		-	-	☐	☐	☐	☐	☐	☐
SCMEC1160	Simcenter Samcef Mecano Parallel Solver	n	☐	☐	☐	☐	☐	☐	☐	☐
Thermal Combination										
SC30536	Simcenter 3D Environment for Samcef and		-	-	☐	☐	☐	☐	☐	☐
SCMEC0191	Simcenter Samcef Mecano Thermal Solver with		-	-	☐	☐	☐	☐	☐	☐
SCMEC1160	Simcenter Samcef Mecano Parallel Solver	n	☐	☐	☐	☐	☐	☐	☐	☐
Thermal/Mechanical Combination										
SC30536	Simcenter 3D Environment for Samcef and		-	-	-	-	☐	☐	☐	☐
SCMEC0181	Simcenter Samcef Mecano Non-Linear Mechanical Solver and		-	-	-	-	☐	☐	☐	☐
SCMEC0191	Simcenter Samcef Mecano Thermal Solver and		-	-	-	-	☐	☐	☐	☐
SCMEC0111	Simcenter Samcef Mecano Supervisor with		-	-	-	-	☐	☐	☐	☐
SCMEC1160	Simcenter Samcef Mecano Parallel Solver	n	☐	☐	☐	☐	☐	☐	☐	☐

 Not enough tokens
 Sufficient tokens

Token Scenarios
Simcenter Motion

			Token Amount									
Product ID	Product Name	Add	50	100	150	200	250	300	350	400	450	500
Individual												
SC30571	Simcenter 3D Motion Modeling		☐	☐	☐	☐	☐	☐	☐	☐	☐	☐
Motion Solution Combination												
SC30571	Simcenter 3D Motion Modeling and		-	-	☐	☐	☐	☐	☐	☐	☐	☐
SC30572	Simcenter 3D Motion Solver with		-	-	☐	☐	☐	☐	☐	☐	☐	☐
SC30581	Simcenter 3D Motion Systems and Controls	n	☐	☐	☐	☐	☐	☐	☐	☐	☐	☐
SC30579	Simcenter 3D Motion TWR	n	☐	☐	☐	☐	☐	☐	☐	☐	☐	☐
SC30582	Simcenter 3D Motion Flexible Body	y	-	-	☐	☐	☐	☐	☐	☐	☐	☐
SC30583	Simcenter 3D Motion Flexible Body Adv	y	-	-	☐	☐	☐	☐	☐	☐	☐	☐
SC30585	Simcenter 3D Motion Standard Tire	n	☐	☐	☐	☐	☐	☐	☐	☐	☐	☐
SC30590	Simcenter 3D Motion Drivetrain	n	☐	☐	☐	☐	☐	☐	☐	☐	☐	☐
SC30575	Simcenter 3D Motion C-code export	n	☐	☐	☐	☐	☐	☐	☐	☐	☐	☐
SC30574	Simcenter 3D Motion Real-Time Desktop Solver	n	☐	☐	☐	☐	☐	☐	☐	☐	☐	☐
SC30599	Simcenter 3D Motion Driving Dynamics	n	☐	☐	☐	☐	☐	☐	☐	☐	☐	☐
Motion Solution Combination												
SC30571	Simcenter 3D Motion Modeling and		-	-	-	☐	☐	☐	☐	☐	☐	☐
SC30572	Simcenter 3D Motion Solver with		-	-	-	☐	☐	☐	☐	☐	☐	☐
SC30581	Simcenter 3D Motion Systems and Controls	y	-	-	-	☐	☐	☐	☐	☐	☐	☐
SC30579	Simcenter 3D Motion TWR	n	☐	☐	☐	☐	☐	☐	☐	☐	☐	☐
SC30582	Simcenter 3D Motion Flexible Body	n	☐	☐	☐	☐	☐	☐	☐	☐	☐	☐
SC30583	Simcenter 3D Motion Flexible Body Adv	n	☐	☐	☐	☐	☐	☐	☐	☐	☐	☐
SC30585	Simcenter 3D Motion Standard Tire	y	-	-	-	☐	☐	☐	☐	☐	☐	☐
SC30590	Simcenter 3D Motion Drivetrain	n	☐	☐	☐	☐	☐	☐	☐	☐	☐	☐
SC30575	Simcenter 3D Motion C-code export	n	☐	☐	☐	☐	☐	☐	☐	☐	☐	☐
SC30574	Simcenter 3D Motion Real-Time Desktop Solver	n	☐	☐	☐	☐	☐	☐	☐	☐	☐	☐
SC30599	Simcenter 3D Motion Driving Dynamics	y	-	-	-	☐	☐	☐	☐	☐	☐	☐



Not enough tokens
Sufficient tokens

Token Scenarios

Simcenter Motion (more combinations)

			Token Amount									
Product ID	Product Name	Add	50	100	150	200	250	300	350	400	450	500
Individual												
SC30571	Simcenter 3D Motion Modeling		<div></div>	<div></div>	<div></div>	<div></div>	<div></div>	<div></div>	<div></div>	<div></div>	<div></div>	<div></div>
Motion Solution Combination												
SC30571	Simcenter 3D Motion Modeling and		-	-	-	-	<div></div>	<div></div>	<div></div>	<div></div>	<div></div>	<div></div>
SC30572	Simcenter 3D Motion Solver with		-	-	-	-	<div></div>	<div></div>	<div></div>	<div></div>	<div></div>	<div></div>
SC30581	Simcenter 3D Motion Systems and Controls	y	-	-	-	-	<div></div>	<div></div>	<div></div>	<div></div>	<div></div>	<div></div>
SC30579	Simcenter 3D Motion TWR	y	-	-	-	-	<div></div>	<div></div>	<div></div>	<div></div>	<div></div>	<div></div>
SC30582	Simcenter 3D Motion Flexible Body	n	<div></div>	<div></div>	<div></div>	<div></div>	<div></div>	<div></div>	<div></div>	<div></div>	<div></div>	<div></div>
SC30583	Simcenter 3D Motion Flexible Body Adv	n	<div></div>	<div></div>	<div></div>	<div></div>	<div></div>	<div></div>	<div></div>	<div></div>	<div></div>	<div></div>
SC30585	Simcenter 3D Motion Standard Tire	n	<div></div>	<div></div>	<div></div>	<div></div>	<div></div>	<div></div>	<div></div>	<div></div>	<div></div>	<div></div>
SC30590	Simcenter 3D Motion Drivetrain	y	-	-	-	-	<div></div>	<div></div>	<div></div>	<div></div>	<div></div>	<div></div>
SC30575	Simcenter 3D Motion C-code export	n	<div></div>	<div></div>	<div></div>	<div></div>	<div></div>	<div></div>	<div></div>	<div></div>	<div></div>	<div></div>
SC30574	Simcenter 3D Motion Real-Time Desktop Solver	n	<div></div>	<div></div>	<div></div>	<div></div>	<div></div>	<div></div>	<div></div>	<div></div>	<div></div>	<div></div>
SC30599	Simcenter 3D Motion Driving Dynamics	n	<div></div>	<div></div>	<div></div>	<div></div>	<div></div>	<div></div>	<div></div>	<div></div>	<div></div>	<div></div>
Motion Solution Combination												
SC30571	Simcenter 3D Motion Modeling and		-	-	<div></div>	<div></div>	<div></div>	<div></div>	<div></div>	<div></div>	<div></div>	<div></div>
SC30572	Simcenter 3D Motion Solver with		-	-	<div></div>	<div></div>	<div></div>	<div></div>	<div></div>	<div></div>	<div></div>	<div></div>
SC30581	Simcenter 3D Motion Systems and Controls	n	<div></div>	<div></div>	<div></div>	<div></div>	<div></div>	<div></div>	<div></div>	<div></div>	<div></div>	<div></div>
SC30579	Simcenter 3D Motion TWR	n	<div></div>	<div></div>	<div></div>	<div></div>	<div></div>	<div></div>	<div></div>	<div></div>	<div></div>	<div></div>
SC30582	Simcenter 3D Motion Flexible Body	n	<div></div>	<div></div>	<div></div>	<div></div>	<div></div>	<div></div>	<div></div>	<div></div>	<div></div>	<div></div>
SC30583	Simcenter 3D Motion Flexible Body Adv	n	<div></div>	<div></div>	<div></div>	<div></div>	<div></div>	<div></div>	<div></div>	<div></div>	<div></div>	<div></div>
SC30585	Simcenter 3D Motion Standard Tire	n	<div></div>	<div></div>	<div></div>	<div></div>	<div></div>	<div></div>	<div></div>	<div></div>	<div></div>	<div></div>
SC30590	Simcenter 3D Motion Drivetrain	n	<div></div>	<div></div>	<div></div>	<div></div>	<div></div>	<div></div>	<div></div>	<div></div>	<div></div>	<div></div>
SC30575	Simcenter 3D Motion C-code export	n	<div></div>	<div></div>	<div></div>	<div></div>	<div></div>	<div></div>	<div></div>	<div></div>	<div></div>	<div></div>
SC30574	Simcenter 3D Motion Real-Time Desktop Solver	y	-	-	<div></div>	<div></div>	<div></div>	<div></div>	<div></div>	<div></div>	<div></div>	<div></div>
SC30599	Simcenter 3D Motion Driving Dynamics	n	<div></div>	<div></div>	<div></div>	<div></div>	<div></div>	<div></div>	<div></div>	<div></div>	<div></div>	<div></div>



Not enough tokens

Sufficient tokens

Token Scenarios

Simcenter Flexible Pipe

			Token Amount							
Product ID	Product Name	Add	50	100	150	200	250	300	350	400
Individual										
SC40510	Simcenter 3D Flexible Pipe Standard Beam		-	□	□	□	□	□	□	□
SC40570	Simcenter 3D Flexible Pipe Standard Shell		-	□	□	□	□	□	□	□
SC40500	Simcenter 3D Flexible Pipe Standard Beam + Shell		-	□	□	□	□	□	□	□
SC40550	Simcenter 3D Flexible Pipe Advanced Beam		-	□	□	□	□	□	□	□
SC40590	Simcenter 3D Flexible Pipe Simulation for EC&WH		-	-	□	□	□	□	□	□
Simcenter 3D Flexible Beam with Options Combination										
SC40510	Simcenter 3D Flexible Pipe Standard Beam with		-	□	□	□	□	□	□	□
SC40520	Simcenter 3D Flexible Pipe Linear Dynamic	y	-	□	□	□	□	□	□	□
SC40530	Simcenter 3D Flexible Pipe Non-Linear Dynamic	n	□	□	□	□	□	□	□	□
SC40540	Simcenter 3D Flexible Pipe Optimization	n	□	□	□	□	□	□	□	□
SC40580	Simcenter 3D Flexible Pipe EC&WH Option	n	□	□	□	□	□	□	□	□
Simcenter 3D Flexible Shell with Options Combination										
SC40570	Simcenter 3D Flexible Pipe Standard Shell with		-	□	□	□	□	□	□	□
SC40520	Simcenter 3D Flexible Pipe Linear Dynamic	y	-	□	□	□	□	□	□	□
SC40530	Simcenter 3D Flexible Pipe Non-Linear Dynamic	y	-	□	□	□	□	□	□	□
SC40540	Simcenter 3D Flexible Pipe Optimization	n	□	□	□	□	□	□	□	□
SC40580	Simcenter 3D Flexible Pipe EC&WH Option	n	□	□	□	□	□	□	□	□
Simcenter 3D Flexible Beam and Shell with Options Combination										
SC40500	Simcenter 3D Flexible Pipe Standard Beam + Shell with		-	-	□	□	□	□	□	□
SC40520	Simcenter 3D Flexible Pipe Linear Dynamic	y	-	-	□	□	□	□	□	□
SC40530	Simcenter 3D Flexible Pipe Non-Linear Dynamic	y	-	-	□	□	□	□	□	□
SC40540	Simcenter 3D Flexible Pipe Optimization	n	□	□	□	□	□	□	□	□
SC40580	Simcenter 3D Flexible Pipe EC&WH Option	n	□	□	□	□	□	□	□	□
Simcenter 3D Flexible Pipe Simulation for EC&WH with Options Combination										
SC40590	Simcenter 3D Flexible Pipe Simulation for EC&WH with		-	-	-	□	□	□	□	□
SC40520	Simcenter 3D Flexible Pipe Linear Dynamic	y	-	-	-	□	□	□	□	□
SC40530	Simcenter 3D Flexible Pipe Non-Linear Dynamic	y	-	-	-	□	□	□	□	□



Not enough tokens

Sufficient tokens

Token Scenarios

Simcenter Response Dynamics and Model Correlation

			Token Amount							
Product ID	Product Name	Add	50	100	150	200	250	300	350	400
Response Dynamics with Simcenter 3D Structures Combination										
SC13500	Simcenter 3D Structures (no tokens) and		<input type="checkbox"/>	<input type="checkbox"/>	<input type="checkbox"/>	<input type="checkbox"/>	<input type="checkbox"/>	<input type="checkbox"/>	<input type="checkbox"/>	<input type="checkbox"/>
SC30521	Simcenter 3D Response Dynamics		<input type="checkbox"/>	<input type="checkbox"/>	<input type="checkbox"/>	<input type="checkbox"/>	<input type="checkbox"/>	<input type="checkbox"/>	<input type="checkbox"/>	<input type="checkbox"/>
Correlation with Simcenter 3D Structures Combination										
SC13500	Simcenter 3D Structures (no tokens) and		-	-	<input type="checkbox"/>	<input type="checkbox"/>	<input type="checkbox"/>	<input type="checkbox"/>	<input type="checkbox"/>	<input type="checkbox"/>
SC30527	Simcenter 3D FE Model Correlation with		-	-	<input type="checkbox"/>	<input type="checkbox"/>	<input type="checkbox"/>	<input type="checkbox"/>	<input type="checkbox"/>	<input type="checkbox"/>
SC30528	Simcenter 3D FE Model Update	y	-	-	<input type="checkbox"/>	<input type="checkbox"/>	<input type="checkbox"/>	<input type="checkbox"/>	<input type="checkbox"/>	<input type="checkbox"/>
Correlation with Simcenter 3D Structures Combination										
SC13500	Simcenter 3D Structures (no tokens) and		<input type="checkbox"/>	<input type="checkbox"/>	<input type="checkbox"/>	<input type="checkbox"/>	<input type="checkbox"/>	<input type="checkbox"/>	<input type="checkbox"/>	<input type="checkbox"/>
SC30527	Simcenter 3D FE Model Correlation with		<input type="checkbox"/>	<input type="checkbox"/>	<input type="checkbox"/>	<input type="checkbox"/>	<input type="checkbox"/>	<input type="checkbox"/>	<input type="checkbox"/>	<input type="checkbox"/>
SC30528	Simcenter 3D FE Model Update	n	<input type="checkbox"/>	<input type="checkbox"/>	<input type="checkbox"/>	<input type="checkbox"/>	<input type="checkbox"/>	<input type="checkbox"/>	<input type="checkbox"/>	<input type="checkbox"/>

Not enough tokens

Sufficient tokens

Token Scenarios Simcenter Durability

			Token Amount							
Product ID	Product Name	Add	50	100	150	200	250	300	350	400
Individual										
SC30531	Simcenter 3D Advanced Durability		–	☐	☐	☐	☐	☐	☐	☐
SC30539	Simcenter 3D Specialist Durability Modelling									
Advanced Durability with Simcenter 3D Structures Combination										
SC13500	Simcenter 3D Structures (no tokens) and		–	☐	☐	☐	☐	☐	☐	☐
SC30531	Simcenter 3D Advanced Durability with		–	☐	☐	☐	☐	☐	☐	☐
SC30521	Simcenter 3D Response Dynamics	n	☐	☐	☐	☐	☐	☐	☐	☐
Specialist Durability with Simcenter 3D Structures Combination										
SC13500	Simcenter 3D Structures (no tokens) and		–	–	☐	☐	☐	☐	☐	☐
SC30539	Simcenter 3D Specialist Durability Modelling with		–	–	☐	☐	☐	☐	☐	☐
SC30540	Simcenter 3D Specialist Durability Solver	y	–	–	☐	☐	☐	☐	☐	☐
SC30533	Simcenter 3D Specialist Durability for Connections	y	–	–	☐	☐	☐	☐	☐	☐
Specialist Durability Composites with Simcenter 3D Structures Combination										
SC13500	Simcenter 3D Structures (no tokens) and		–	–	☐	☐	☐	☐	☐	☐
SC30539	Simcenter 3D Specialist Durability Modelling and		–	–	☐	☐	☐	☐	☐	☐
SC30541	Simcenter 3D Specialist Durability Composite Fatigue		–	–	☐	☐	☐	☐	☐	☐



Token Scenarios

Simcenter Aerostructures

			Token Amount							
Product ID	Product Name	Add	50	100	150	200	250	300	350	400
Individual										
Aerostructures with Simcenter 3D Structures Combination										
SC13500	Simcenter 3D Structures (no tokens) and		☐	☐	☐	☐	☐	☐	☐	☐
SC30601	Simcenter 3D Aerostructure Environment and		☐	☐	☐	☐	☐	☐	☐	☐
SC30602	Simcenter 3D Margin of Safety		☐	☐	☐	☐	☐	☐	☐	☐

Not enough tokens
Sufficient tokens

Token Scenarios

Simcenter Additive Manufacturing

			Token Amount							
Product ID	Product Name	Add	50	100	150	200	250	300	350	400
Additive Manufacturing										
SC12500	Simcenter 3D Engineering Desktop (no tokens) or		☐	☐	☐	☐	☐	☐	☐	☐
SC13500	Simcenter 3D Structures (no tokens) with		☐	☐	☐	☐	☐	☐	☐	☐
SC40110	Simcenter 3D AM Solver Add-On		–	☐	☐	☐	☐	☐	☐	☐

Not enough tokens

Sufficient tokens

Token Scenarios

Simcenter 3D Material Engineering

			Token Amount										
Product ID	Product Name	Add	50	100	150	200	250	300	350	400	450	500	550
Individual													
SC40200	Simcenter 3D Materials Engineering Standard		-	-	-	-	☐	☐	☐	☐	☐	☐	☐
Materials Engineering Standard and Advanced													
SC40200	Simcenter 3D Materials Engineering Standard and		-	-	-	-	-	-	☐	☐	☐	☐	☐
SC40201	Simcenter 3D Materials Engineering Advanced		-	-	-	-	-	-	☐	☐	☐	☐	☐
Materials Engineering with Simcenter Nastran													
SC40200	Simcenter 3D Materials Engineering Standard and		-	-	-	-	-	-	-	-	☐	☐	☐
NXN001	Simcenter Nastran Basic and		-	-	-	-	-	-	-	-	☐	☐	☐
NXN030	Simcenter Nastran Multistep Nonlinear with		-	-	-	-	-	-	-	-	☐	☐	☐
SC40201	Simcenter 3D Materials Engineering Advanced	n	☐	☐	☐	☐	☐	☐	☐	☐	☐	☐	☐
MLM2000	Multimech HPC Add-on	y	-	-	-	-	-	-	-	-	☐	☐	☐
Materials Engineering with Simcenter Samcef													
SC40200	Simcenter 3D Materials Engineering Standard and		-	-	-	-	-	-	-	-	-	-	☐
SC30536	Simcenter 3D Environment for Samcef and		-	-	-	-	-	-	-	-	-	-	☐
SCSCF0151	SAMCEF Bacon and		-	-	-	-	-	-	-	-	-	-	☐
SCMEC0181	Simcenter Samcef Mecano Non-Linear Mechanical Solver w/		-	-	-	-	-	-	-	-	-	-	☐
SC40201	Simcenter 3D Materials Engineering Advanced	y	-	-	-	-	-	-	-	-	-	-	☐
MLM2000	Multimech HPC Add-on	y	-	-	-	-	-	-	-	-	-	-	☐

Not enough tokens

Sufficient tokens

FAQ – Value Based Licensing

Which Simcenter 3D versions use Value Based Licensing?

- VBL is supported with Simcenter 11 and subsequent

Can Simcenter 3D tokens combine with tokens in other portfolio products?

- No, Simcenter 3D Tokens can only be used for Simcenter 3D, Simcenter Nastran, Simcenter Samcef and Simcenter Multimech applications.

Can tokens be used with license borrowing?

- No

FAQ – Value Based Licensing

How are Tokens consumed by the product

- When an applications or feature is accessed:
 - Software first checks for the license feature of the module. If not available, then ...
 - Checks for tokens and attempts to check out the required number of token license features
- In both cases, the license features will be held onto until license return actions occur

When are tokens more cost efficient then module-based licensing?

- There is no hard-and-fast rule. Each customer's situation needs to be evaluated.
- But in general, customers wishing to use a larger range of products will be a good candidate for VBL.

Are all Simcenter 3D, Simcenter Nastran, and Simcenter Samcef products usable by tokens?

- Most are but some are not. Several royalty based products are not usable by tokens. Your account manager can explain.

FAQ – Value Based Licensing

Can tokens be used together with module-based licensing?

- Yes

Can users control whether a module-based license or token license is consumed?

- No. Simcenter 3D will always try to check-out the module-based license first. Only if not available will it then try to check-out token licenses

FAQ – Value Based Licensing

Is it possible use Simcenter Nastran via token with Femap?

- Simcenter 3D base products are a mandatory pre-requisite to use Simcenter Nastran via tokens. If you have a mix of Femap with Simcenter 3D, Simcenter Nastran could be run with tokens.

How can users get training for capabilities they may want to use with tokens?

- We recommend that users sign up for Learning Advantage where they can do self-training.

FAQ – Value Based Licensing

If the price for a module changes, will token count change?

No. Normal prices changes (inflation) impact all modules, including tokens, so the ratio “number of tokens= price of module/price of token” remains identical.

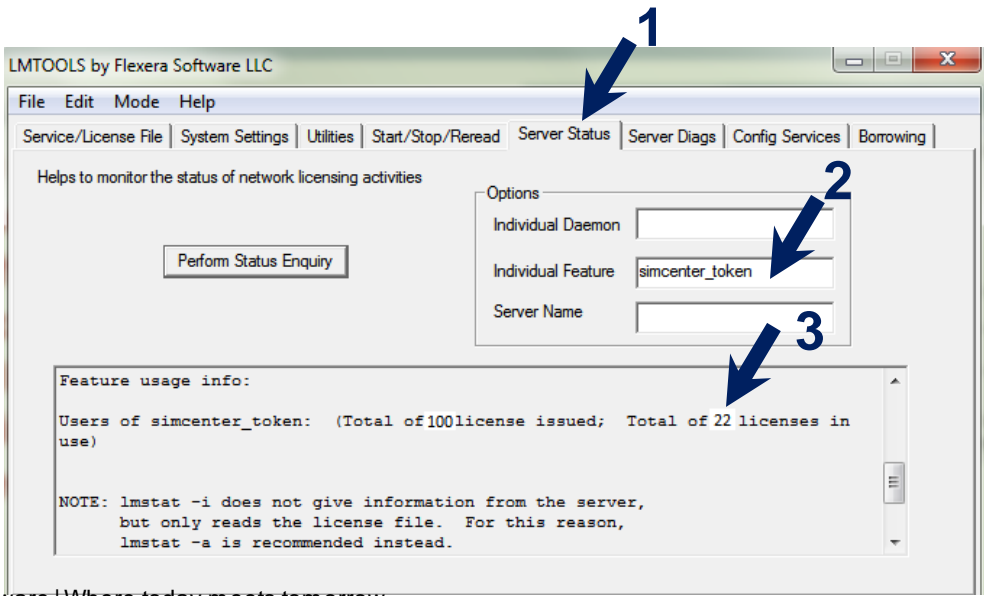
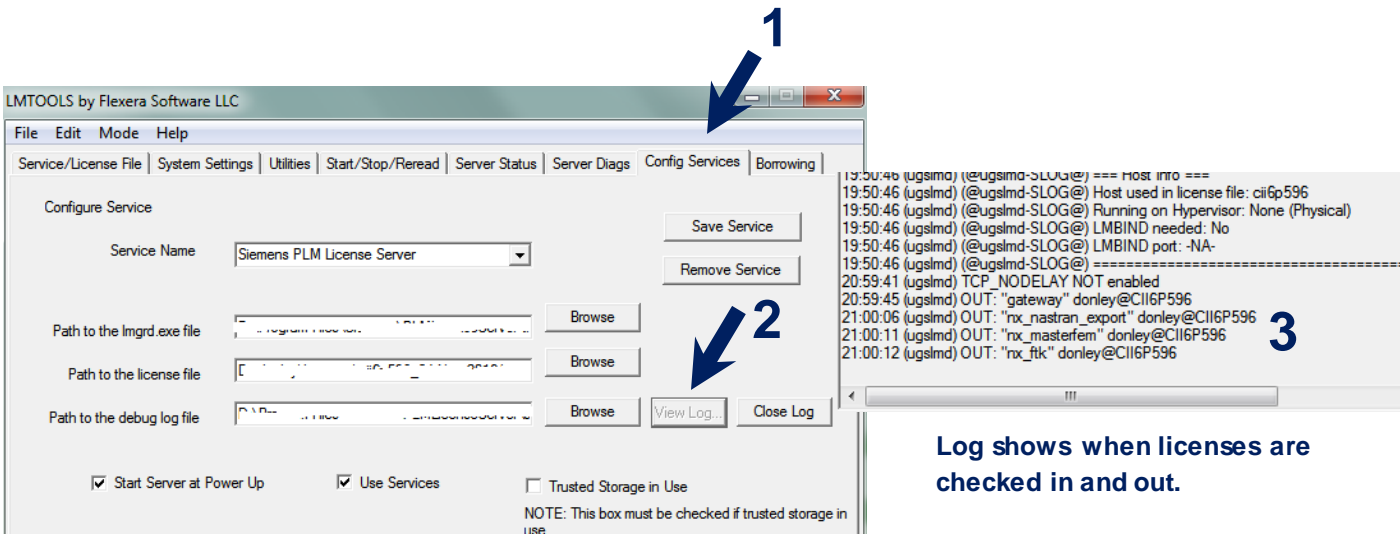
Does Siemens intend to add new applications into the token system?

Yes. We are frequently adding new modules and we expect that most will be tokenable. This is the inherent value of the value-based licensing system.

FAQ – Value Based Licensing

How do customers track their token usage?

- Customers can use the Lmtools application to track their license feature usage
 - Option 1: From the Config Services tab, users can view the log file. This will give a listing of license features (including for tokens) as they are checked in and out.
- Option 2: From the Server Status tab, users can enter simcenter_token in the Individual Feature entry and get a report of total tokens that are licensed and in use at any moment



Contact

Mark Donley
Simcenter Structures Product Manager
2000 Eastman Dr.
Milford, OH 45150

E-mail: mark.donley@siemens.com