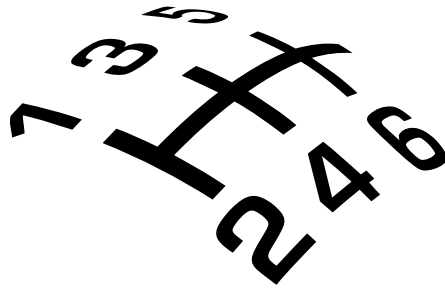


®



SHORT-SHIFTERS.COM

4H-TECH Short Shifters. **Power shifters for quicker and shorter gear changes**

Fitting instructions for 4H-Tech G-Shift Short Shifter.



Please check first if your original shift linkage on top of the gearbox looks like this:



OK

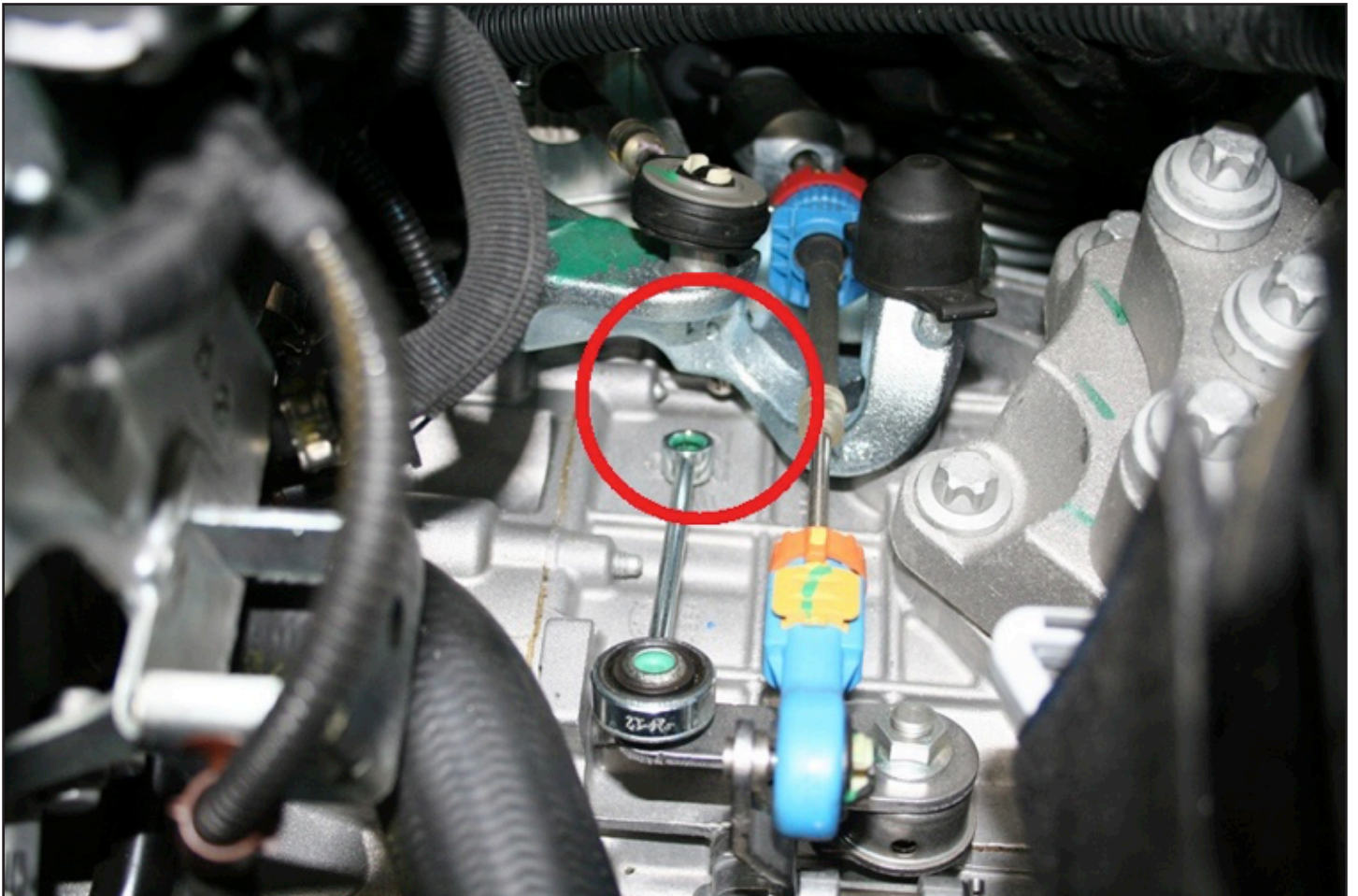


SHORT-SHIFTERS.COM





SHORT-SHIFTERS.COM





**Support the shifter
with pliers!**

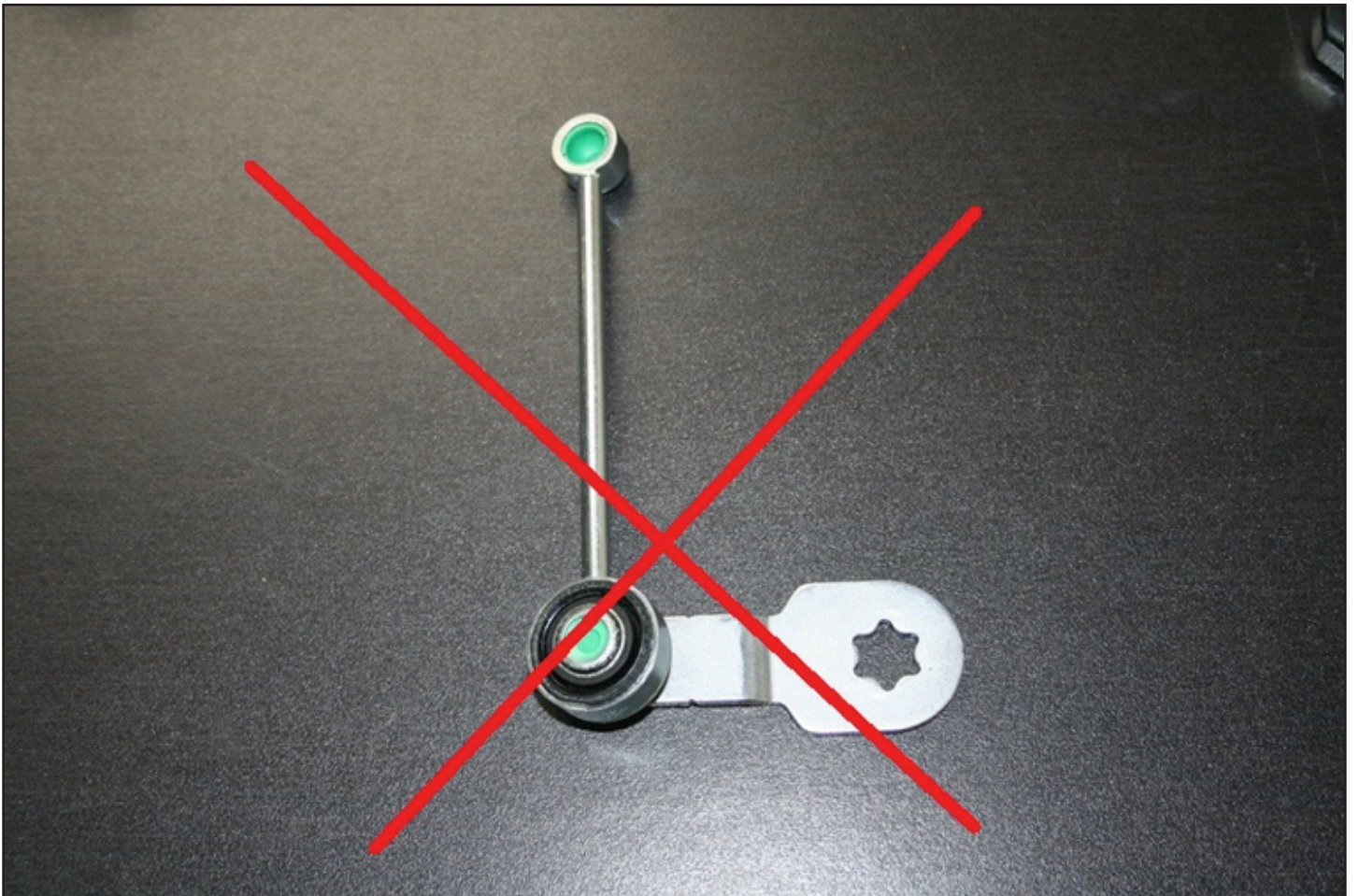
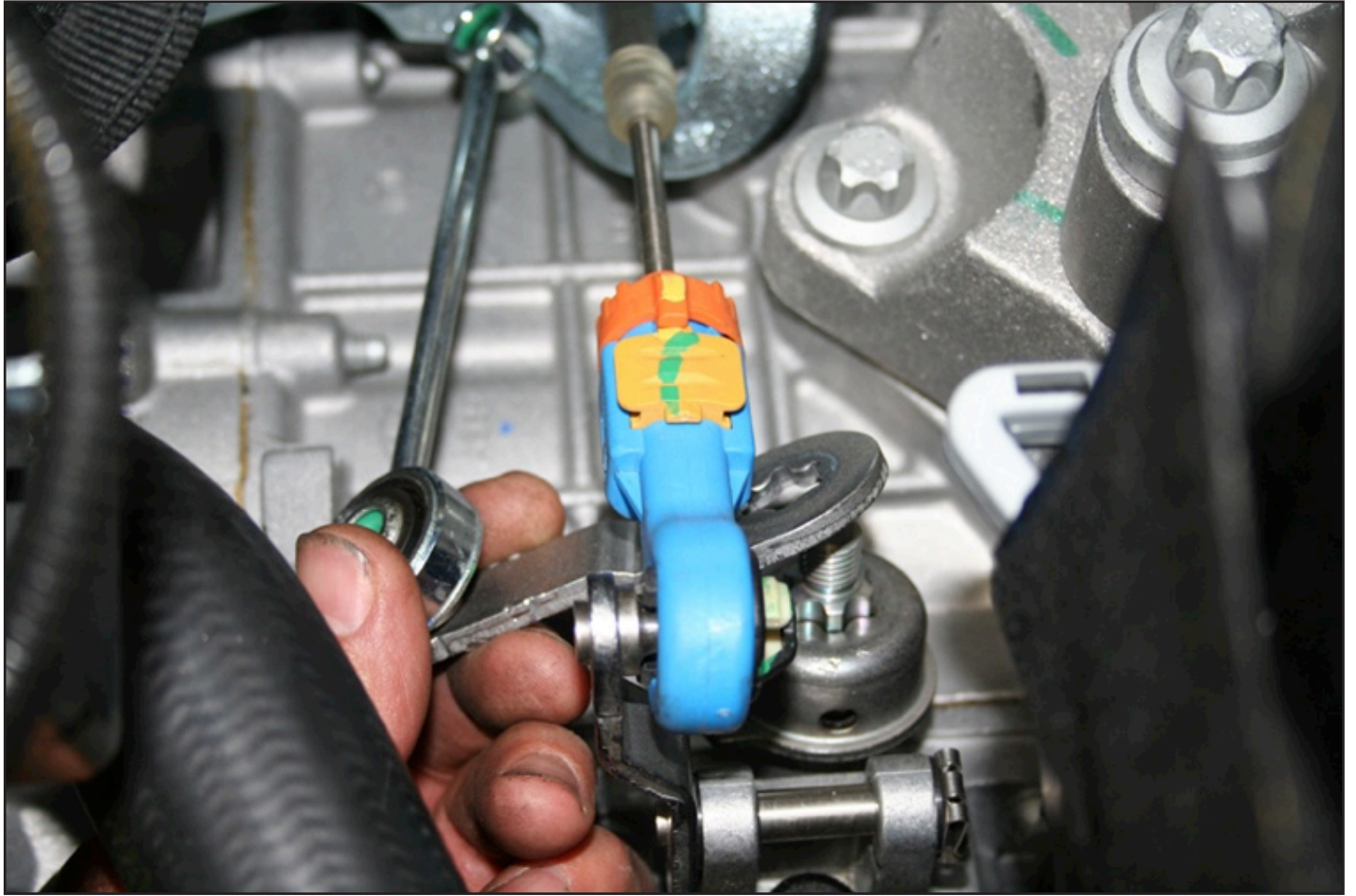
Remove nut



**Use screw driver to remove
original shifter**

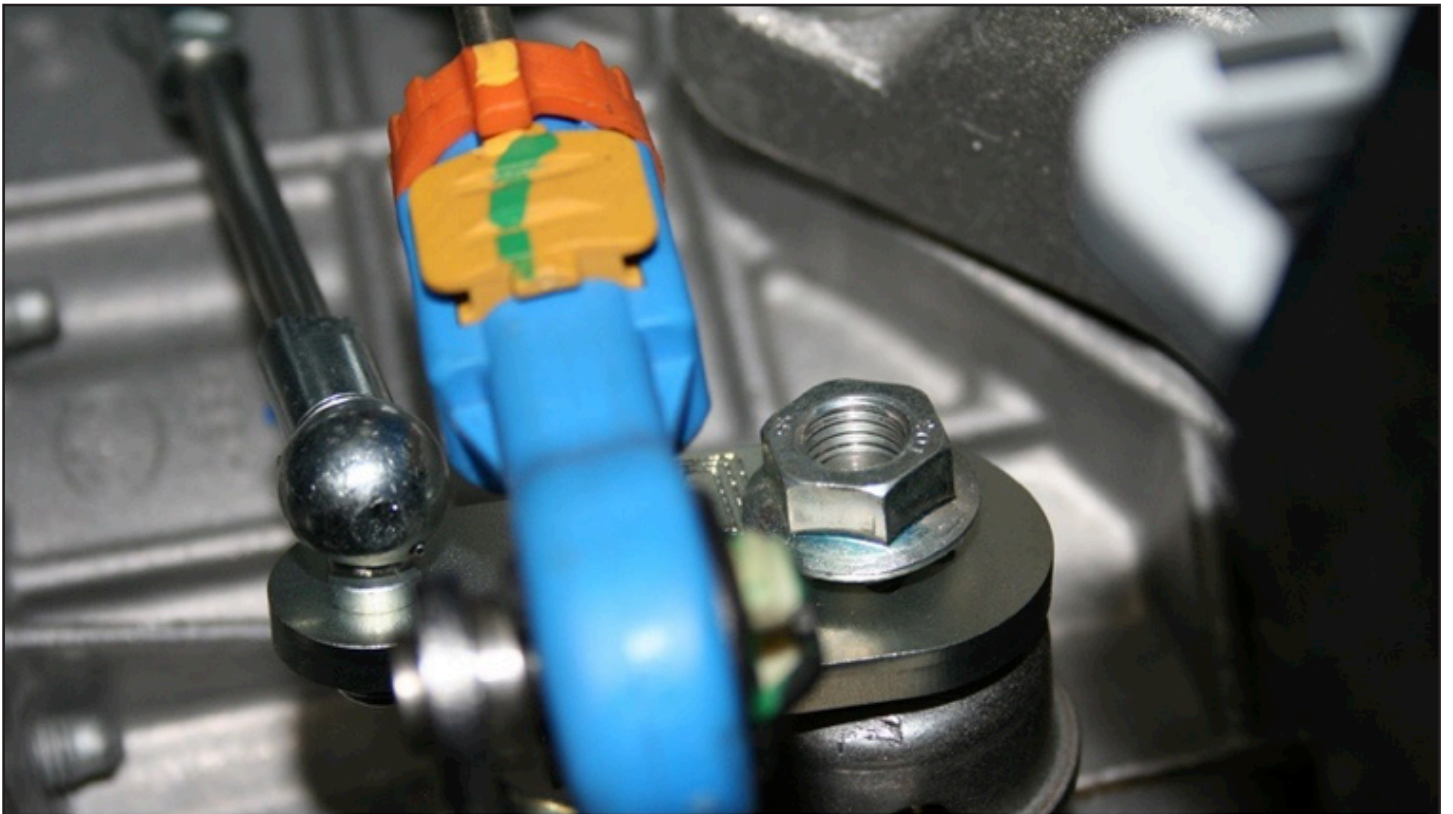


SHORT-SHIFTERS.COM

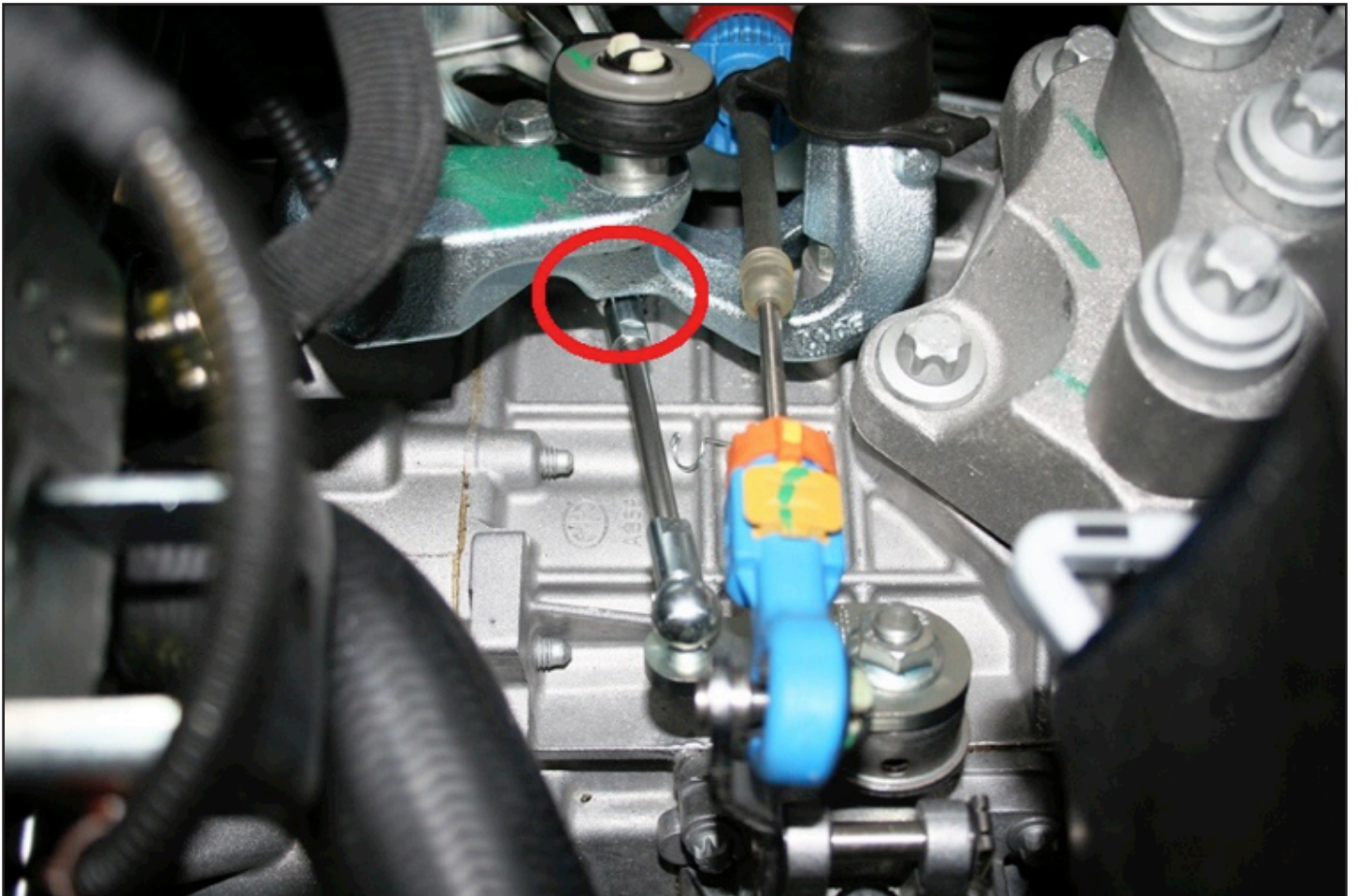




SHORT-SHIFTERS.COM

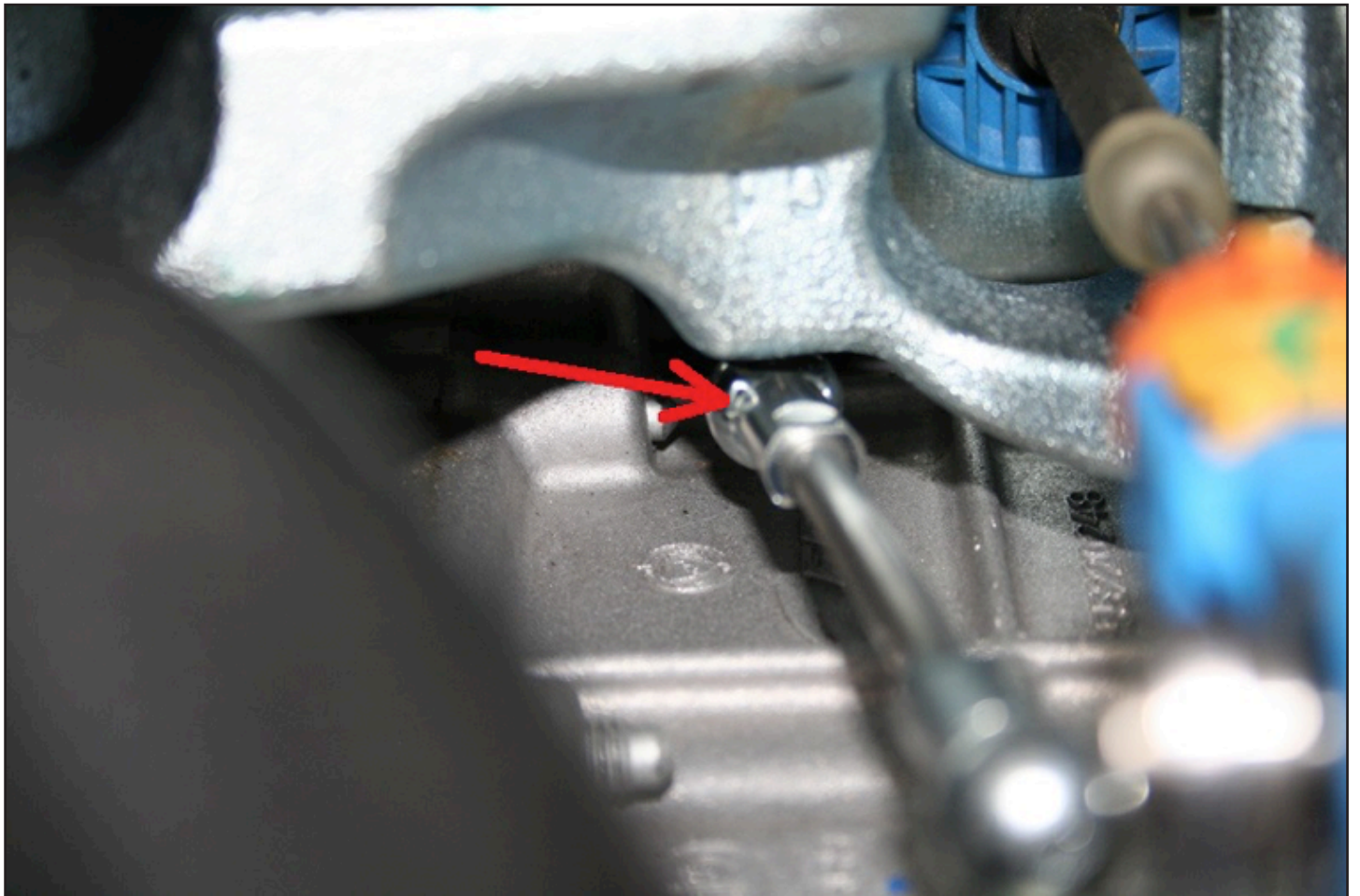
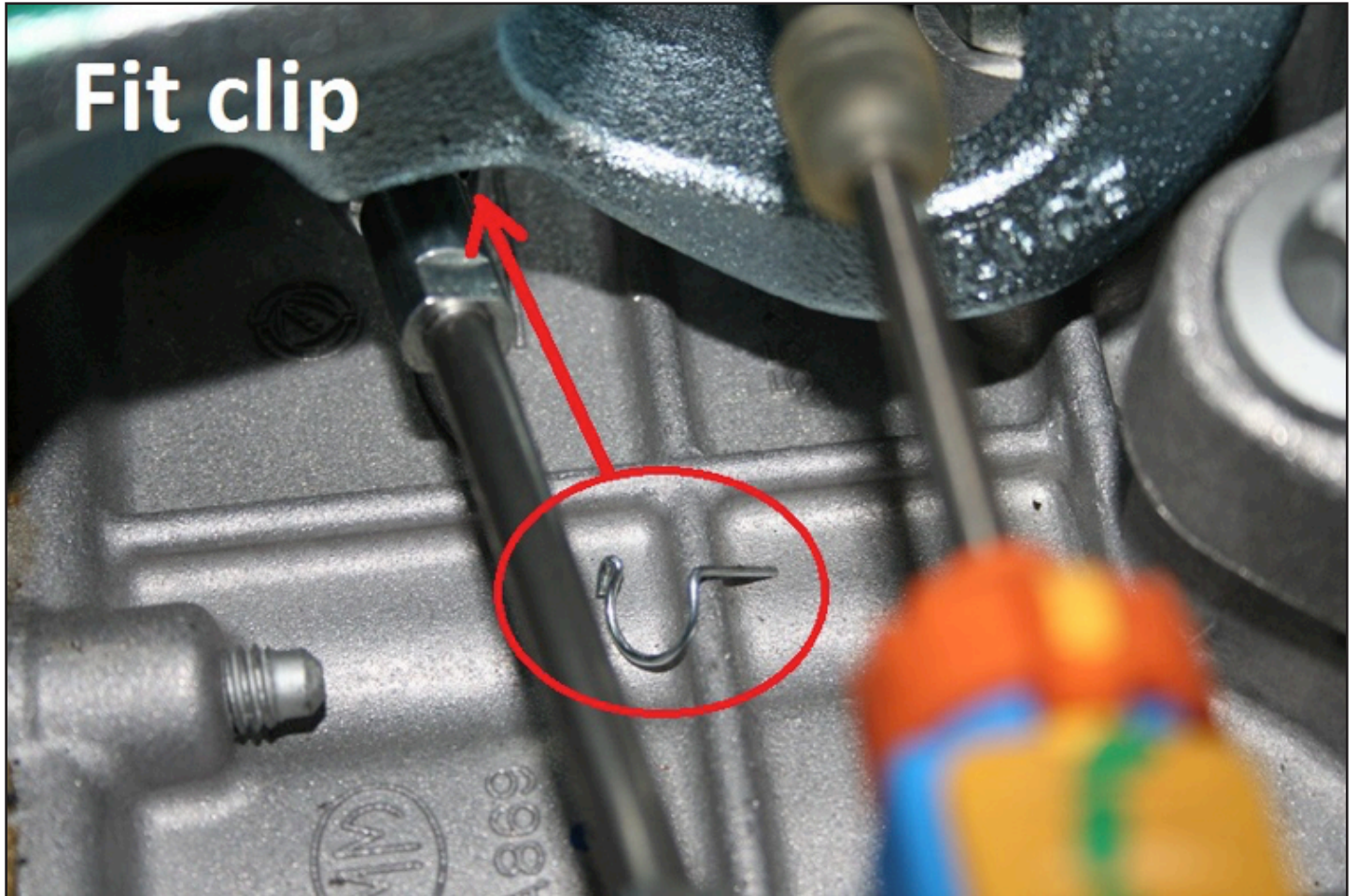


Use nut to press the new shifter on the shaft.



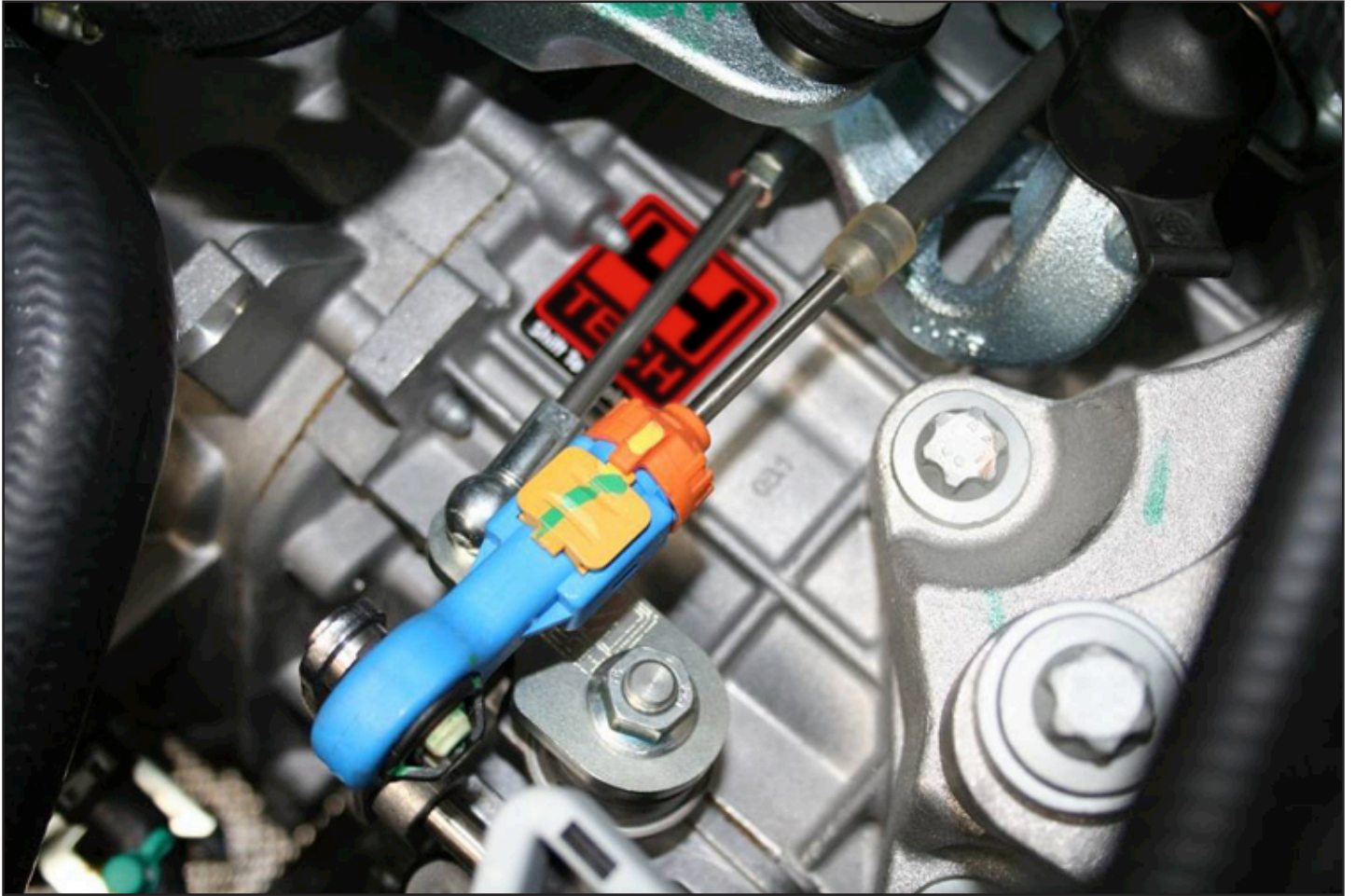


SHORT-SHIFTERS.COM





SHORT-SHIFTERS.COM



READY!



PROTECTED DESIGN! This Short Shifter is 100% developed, tested and produced by 4H-Tech®, and is protected under international copyright, trademark and other laws.