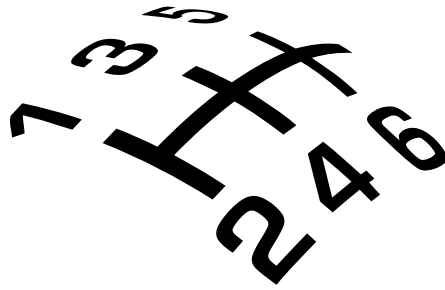


®



SHORT-SHIFTERS.COM

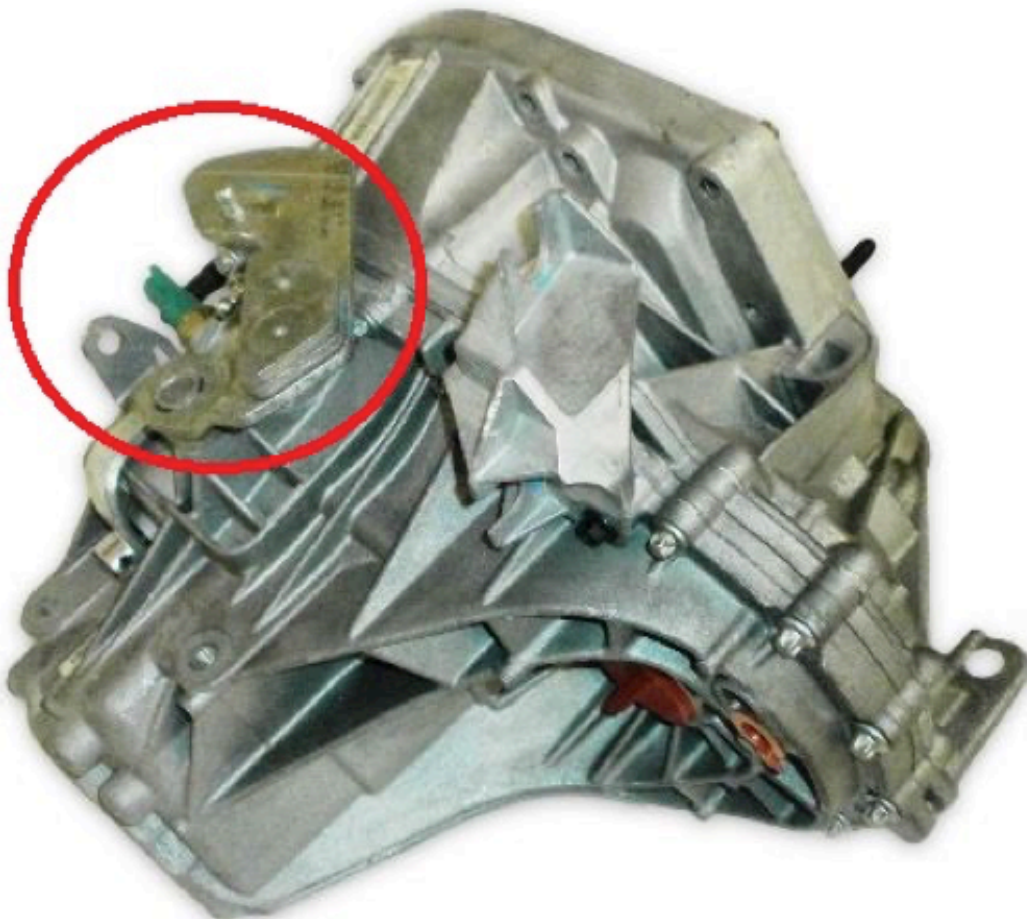
4H-TECH Short Shifters. Power shifters for quicker and shorter gear changes

Fitting instructions for 4H-TECH TL4-Shift Short Shifter.





Open the bonnet, and remove the air intake hose, air filter housing and battery .
Unclip the front- and rear connectors from the battery tray.
Unbolt the battery tray from the chassis.



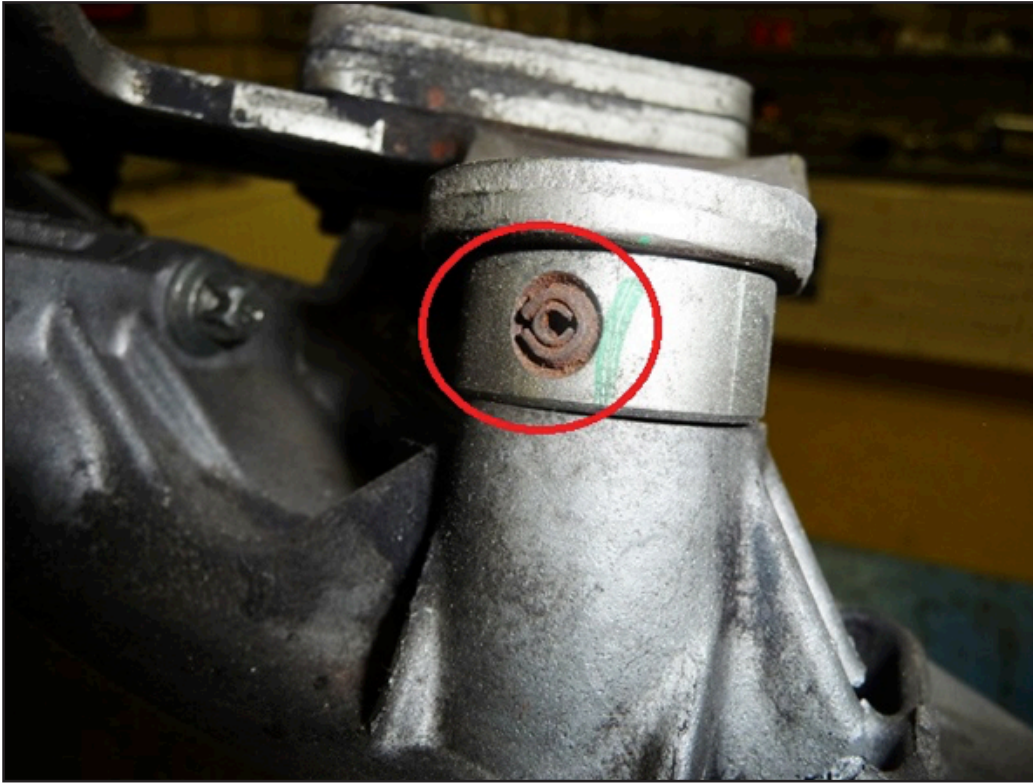


SHORT-SHIFTERS.COM

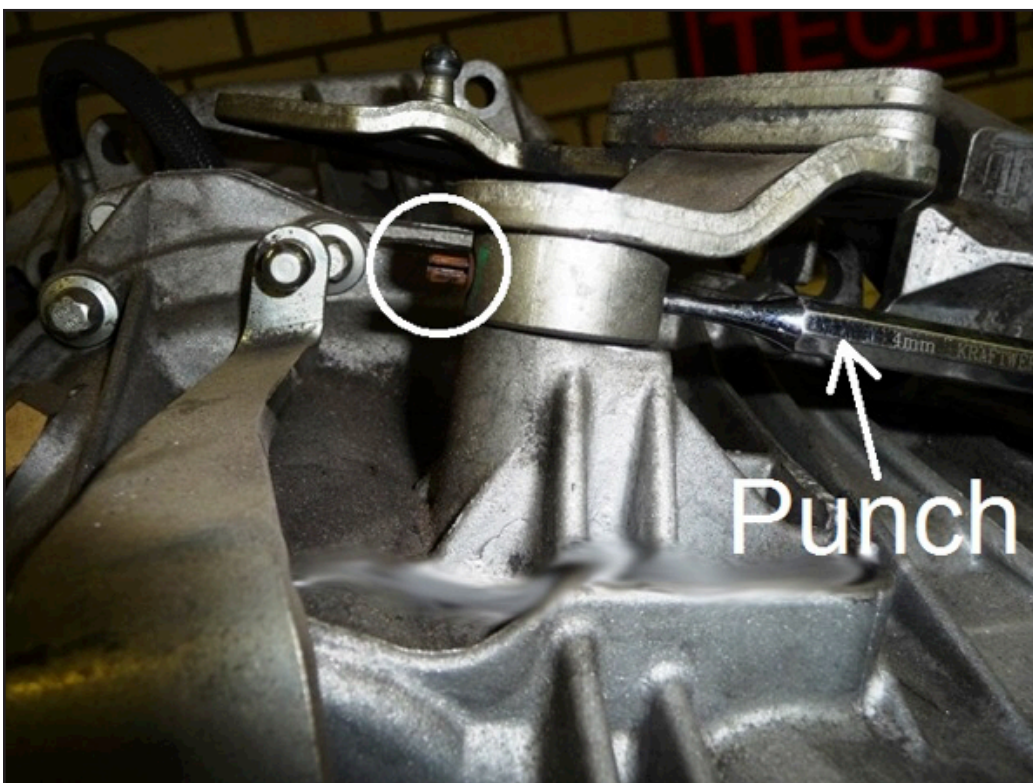
The following pictures are made from the gearbox removed from the car to make the fitting of the short shifter much more clearer to see:

Put the gear lever in neutral position and unclip the shift cable from the shifter arm with the use of a 13mm spanner.

The original shifter arm on top of the gearbox is secured on the shaft with a steel pin. This pin consist of two parts. A inner- and an outer part.



The inner pin must be removed first:





SHORT-SHIFTERS.COM

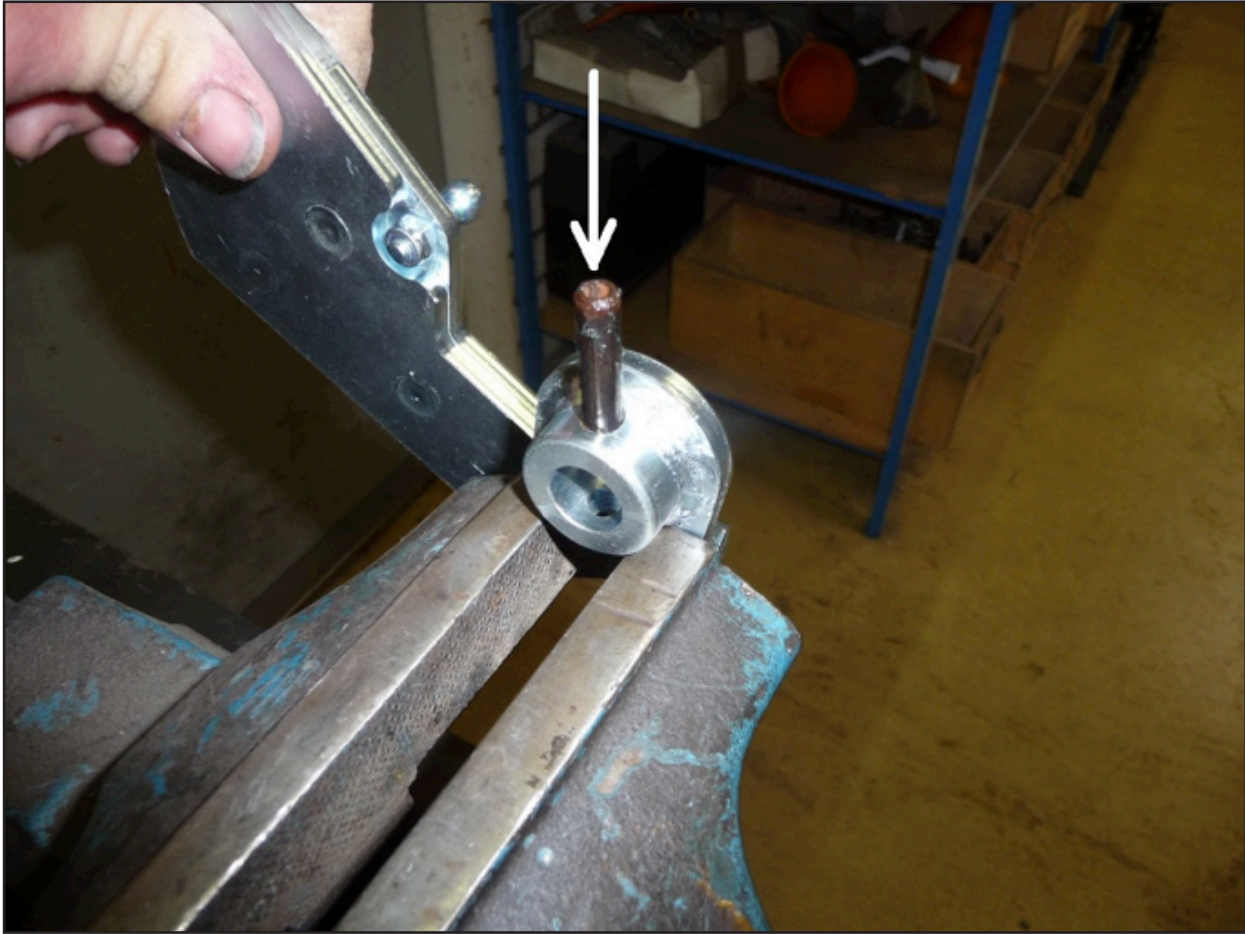
Remove the outer pin with a bigger punch.



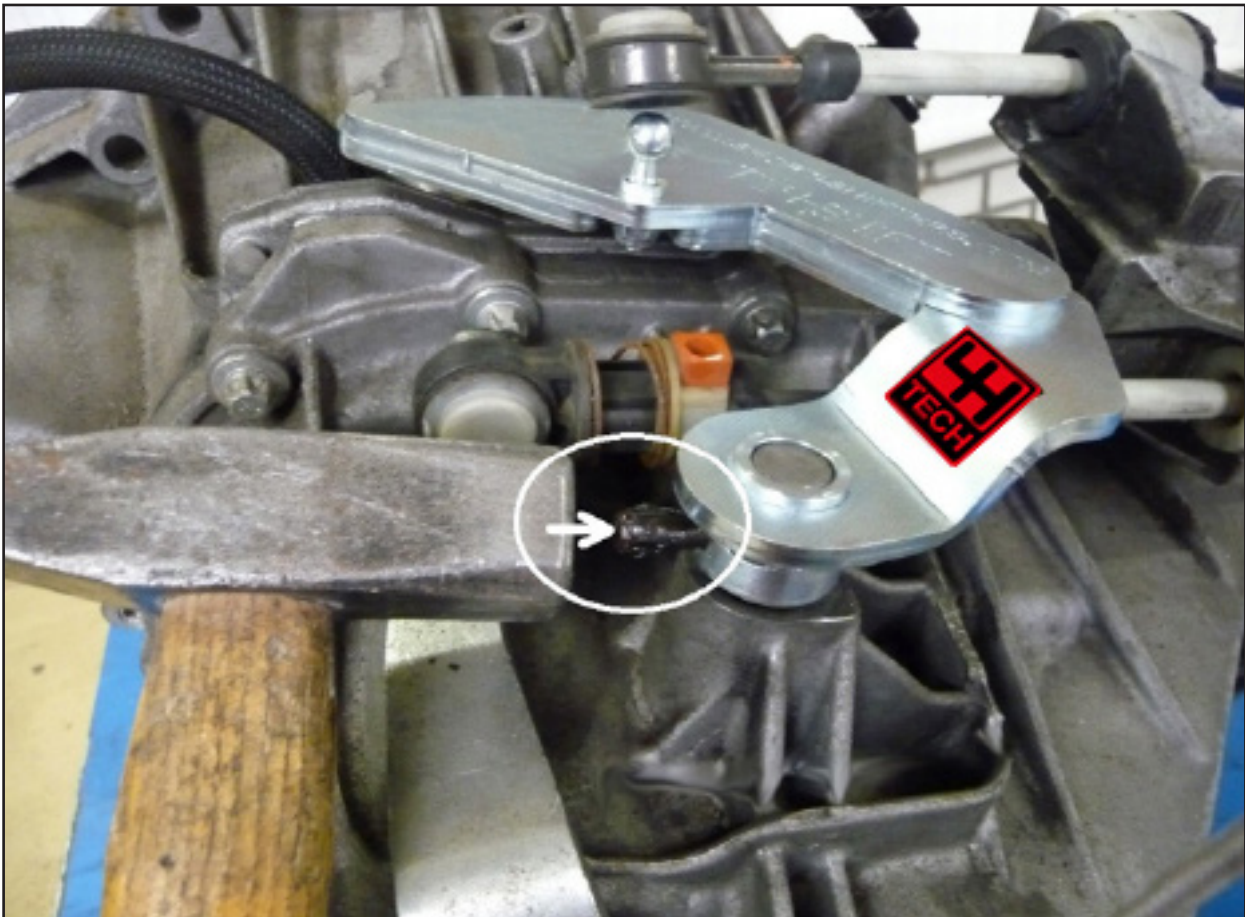
Remove the shifter arm from the transmission:



Grease up both pins.



Tap the large pin in to the new Shifter arm for about 4mm.



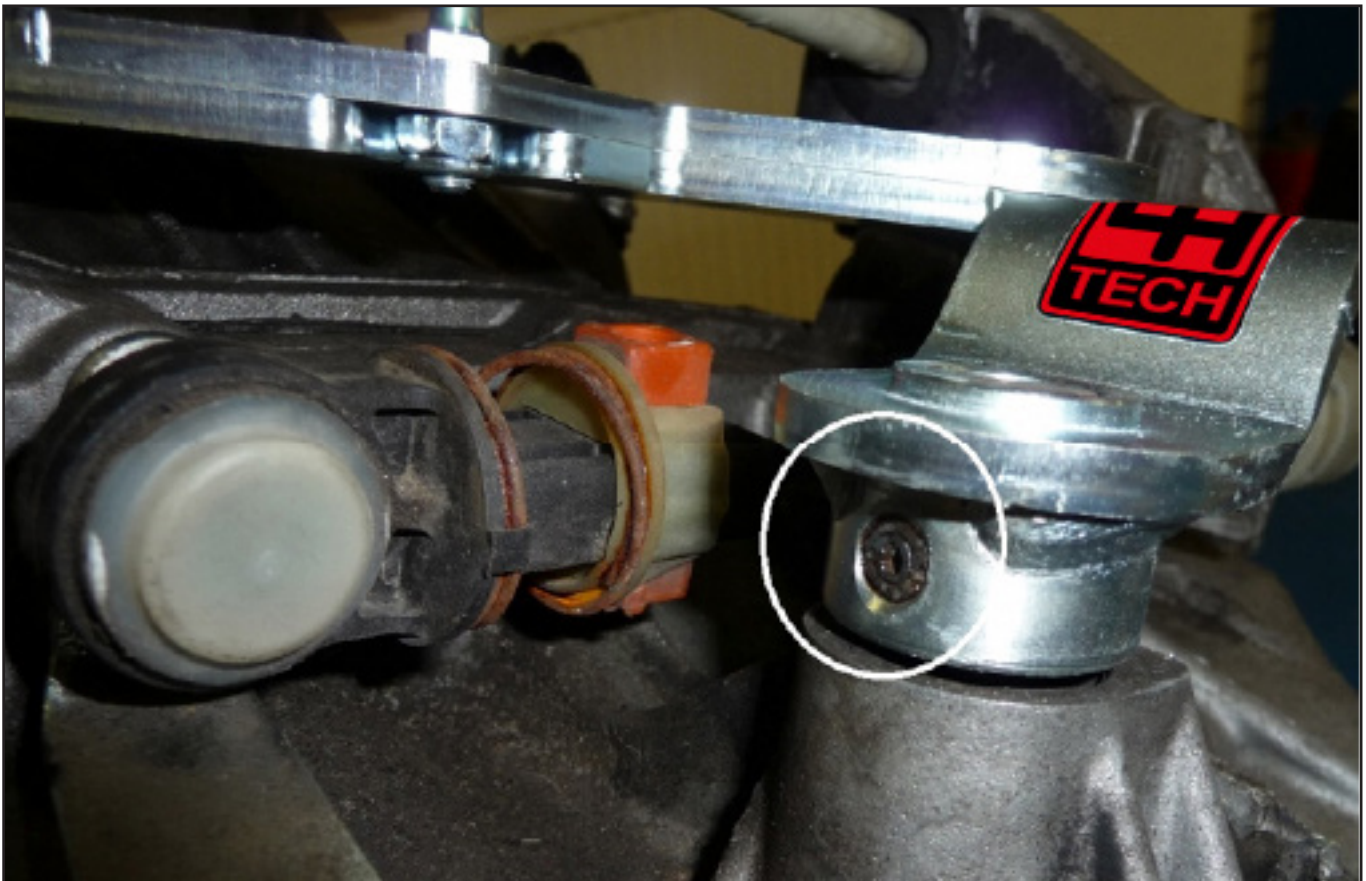
Put the new Shifter arm on the gear selector shaft, and tap the pin through .



SHORT-SHIFTERS.COM



Take the small pin and tap it in the larger pin.

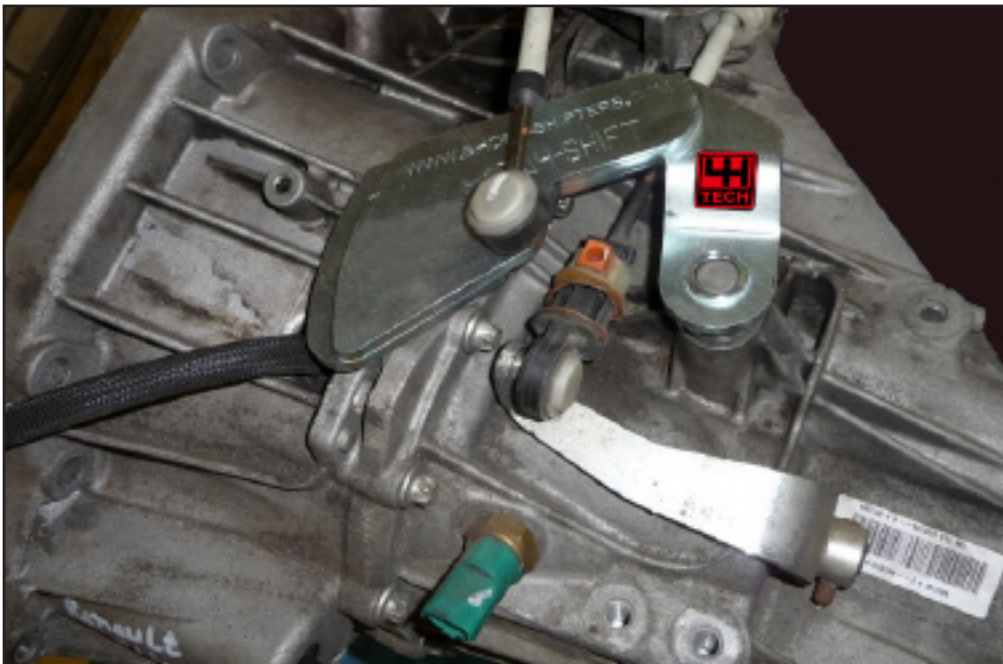




SHORT-SHIFTERS.COM



Press the shift cable on the bolt head.



Fit back the battery tray, battery, air intake hose, and air filter housing.

Make a test drive and check if all gears can be engaged. Enjoy 30% less gear throw and that lovely ``Klick-klack`` feeling. Now your car shifts like a racecar, but always remember to be safe and don't get overly excited on the public roads out there.



PROTECTED DESIGN! This Short Shifter is 100% developed, tested and produced by 4H-Tech®, and is protected under international copyright, trademark and other laws.