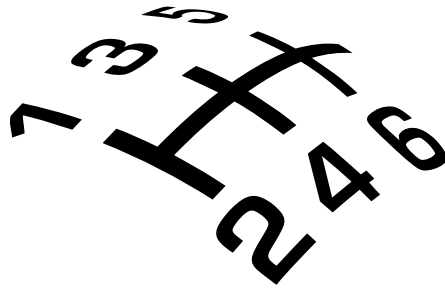


®

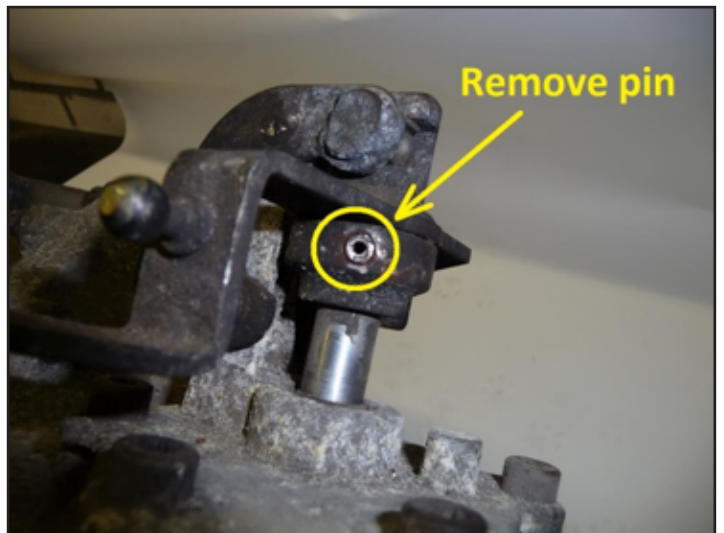
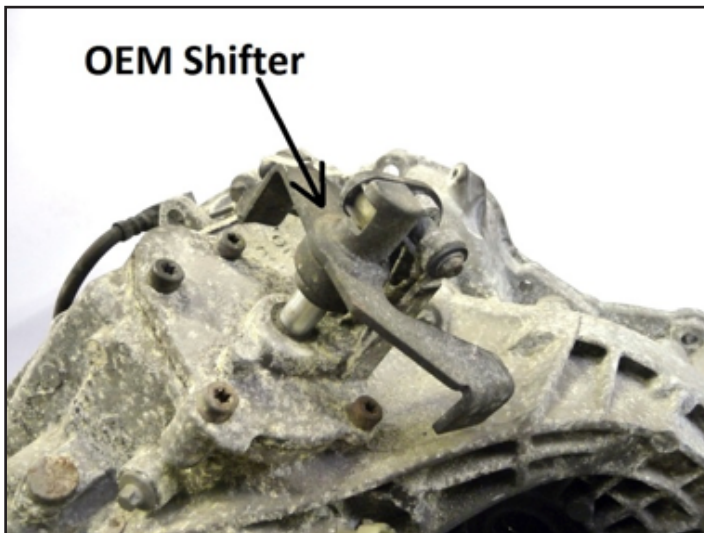


SHORT-SHIFTERS.COM

4H-TECH Short Shifters. Power shifters for quicker and shorter gear changes

Fitting guide 4H-TECH® T-Shift (F23)

Remove old OEM shifter, detach the 2 shift cables from the ball heads.





SHORT-SHIFTERS.COM





SHORT-SHIFTERS.COM



Fitment of stainless steel shift cable re-positioning bracket*:





SHORT-SHIFTERS.COM

Make a test drive and check if all gears can be engaged. Enjoy 45% less gear throw and that lovely ``Klick-klack`` feeling. Now your car shifts like a racecar, but always remember to be safe and don't get overly excited on the public roads out there.



PROTECTED DESIGN! This Short Shifter is 100% developed, tested and produced by 4H-Tech®, and is protected under international copyright, trademark and other laws.