



**SHORT-SHIFTERS.COM**

**4H-TECH Short Shifters. Power shifters for quicker and shorter gear changes**

## Fitting guide for M22-Shift



This fitting guide shows step by step how to fit the 4H-TECH M22-Shift Short Shifter kit Opel Adam 1.0 Turbo. Other cars (like Corsa E), will have about the same procedure, some things might differ from this car, but basically this guide can be used for all applications.

Open the bonnet.



Remove ECU, Battery, and Battery tray:



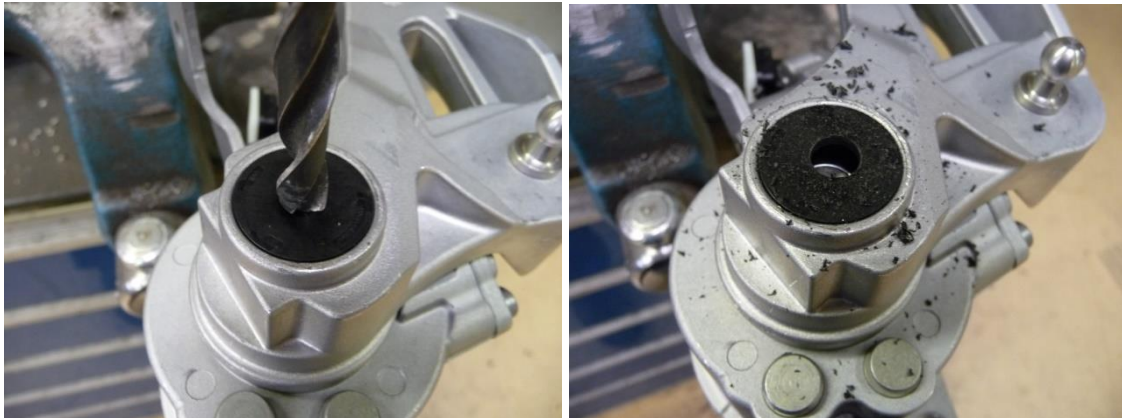


Put the shifter arm in its neutral position and put a 13mm spanner between the shift arm and the plastic cable end to lift the shift cable from the OEM shifter arm:

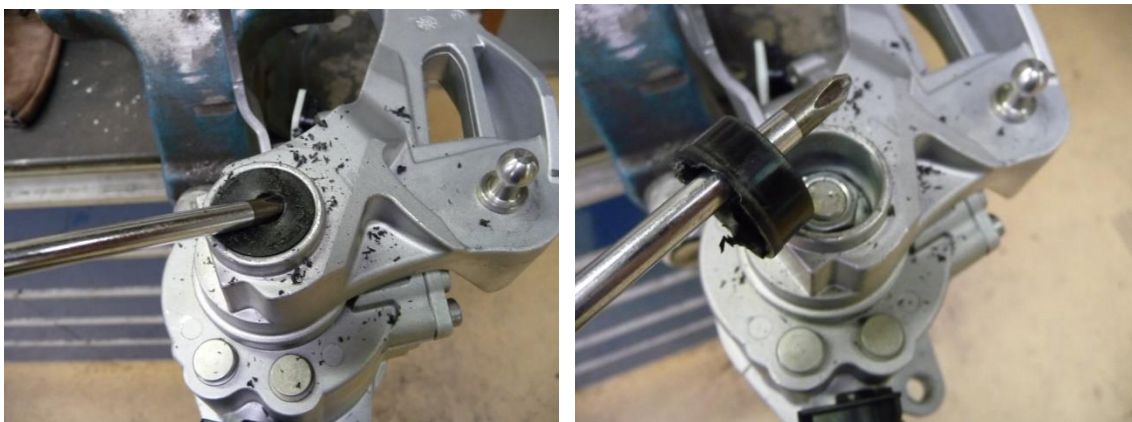


The following pictures are taken with the shift column out of the car for clearer visualability. You do not have to take the shift colum out of the car, all the work can be done with everything still in the car. It will take about 10 minutes to fit the new shifter arm when you follow the pictures below:

Drill a hole in the plastic cap of the stock shifter



Remove the cap with a screw driver.



Remove the nut with a 15mm spanner (support the shifter arm with your other hand):

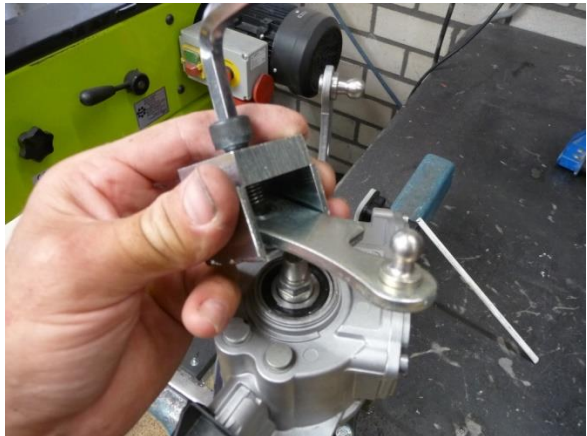




Put the drill (included with the kit) in a cordless drill machine and put the drill over the bolt head of the stock shifter arm. The bolt head will guide the drill. Drill away the aluminium around the bolt head, till the arm comes loose so you can remove it from the shift culom.



Use the special tool to pull the little metal shifter arm from the shaft:



Put the short shifter arm on the hexagon shaft, and push it down the shaft with the nut. Tighten the nut as good as you can, while using your other hand to support the shifter arm. (to avoid putting stress on the shift shaft itself)



Press the shifter cable on the bolt head from the short shifter.

Check if all gear can be engaged with a factory smoothness , and fit all parts back in reverse order.

Make a test drive and enjoy 25% less gear throw and that lovely ``Klick-klack`` feeling. Now your car shifts like a race car, but always remember to be safe and don't get overly excited on the public roads out there.

Protected Design. This Short Shifter is 100% developed, tested and produced by 4H-TECH®, and is protected under international copyright, trademark and other laws.



**SHORT-SHIFTERS.COM**

**4H-TECH Short Shifters. Power shifters for quicker and shorter gear changes**

Copy right 2019 by 4H-TECH®