

TruffleJars

Manual | SpaceJars

Table of Contents

1. Disclaimer and important information	2
2. TruffleJars	4
2.1 Types of Truffles	4
2.2 Lets get Started	4
2.2.1 Important	4
2.2.2 Start the Grow	5
2.2.3 Patience	5
2.2.4 Harvest	7
2.3 Storage	10
2.4 Use	10

1. Disclaimer and important information

The website and products of SpaceJars are intended for persons aged 18 and over. SpaceJars points out that persons under the age of 18 are not permitted to place orders. All products offered by SpaceJars must be kept out of the reach of persons under the age of 18.

The products offered by SpaceJars are not to be regarded as medicines and are not intended to replace (already started) medical treatments and/or medical advice from a healthcare provider. The products therefore cannot be used as a substitute for a prescribed drug or medication. The products of SpaceJars must never be used in combination with medicines, alcohol, supplements, and antidepressants (MAO inhibitors, SSRIs, SNRIs, and TCAs) or other substances with a similar effect.

The products of SpaceJars and/or psilocybin and/or psilocin and/or any somewhat comparable substances must never be used by persons with mental disorders, mood or anxiety disorders, and/or psychotic vulnerability.

SpaceJars sells only products that comply with the conditions as described in the Opium Act and therefore are not included on Lists I & II of the Opium Act. Sales will take place solely within the framework of medical and/or scientific reasons, as laid down in Article 8 of the Opium Act.

All information provided by SpaceJars, whether through the website, manuals, or by its employees via telephone, email, or other means of communication, is purely for informational purposes and should not be considered medical advice. Although SpaceJars and its employees will always strive to perform their activities to the best of their ability, it cannot be guaranteed that product descriptions and information provided via the website or by employees via email, telephone, or other communication channels are accurate, complete, reliable, up to date, and error-free. SpaceJars reserves the right at all times to correct, modify, or remove the information provided.

SpaceJars points out that in some cases the shape and colors of packaging may be changed, while it concerns the same product as described.

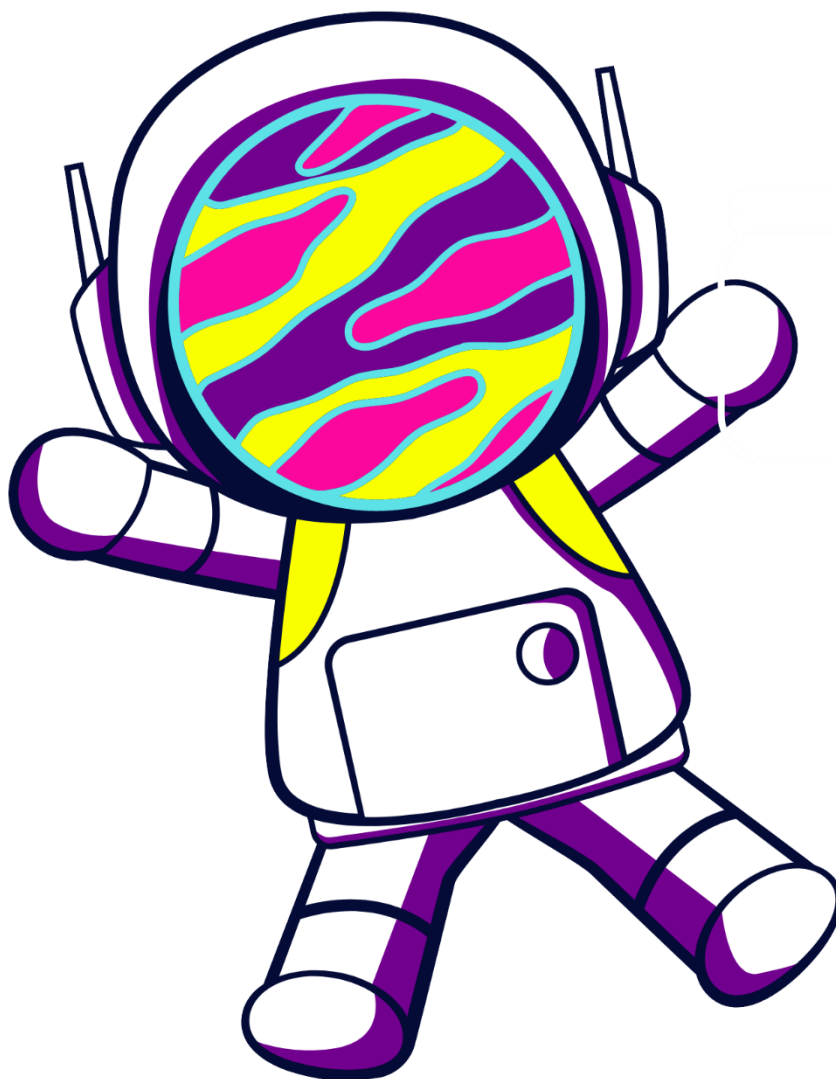
In addition to consulting the website or employees, the buyer bears their own responsibility to inform themselves ("duty of investigation") about the use, effects, and possible health risks of the ordered product. SpaceJars is not liable for damage arising from incorrect or unlawful use of the delivered products.

All products sold by SpaceJars comply with Dutch legislation, including the Opium Act. SpaceJars cannot provide 100% reliable information regarding sales and delivery outside the Netherlands. The purchaser of the product must therefore inform themselves whether importation of the product is legal and bears full responsibility and legal accountability for complying with local laws and customs regulations.

SpaceJars is not responsible and/or liable for orders shipped at the purchaser's request if it appears that the product is illegal in the country to which the order has been shipped. SpaceJars is therefore not responsible for any seizure and/or destruction of products by customs or other authorities in the country where the order is delivered or in countries passed through during shipment. In the event of the above, SpaceJars will also not refund the purchase and shipping costs and any (possible) compensation for damages to the purchaser.

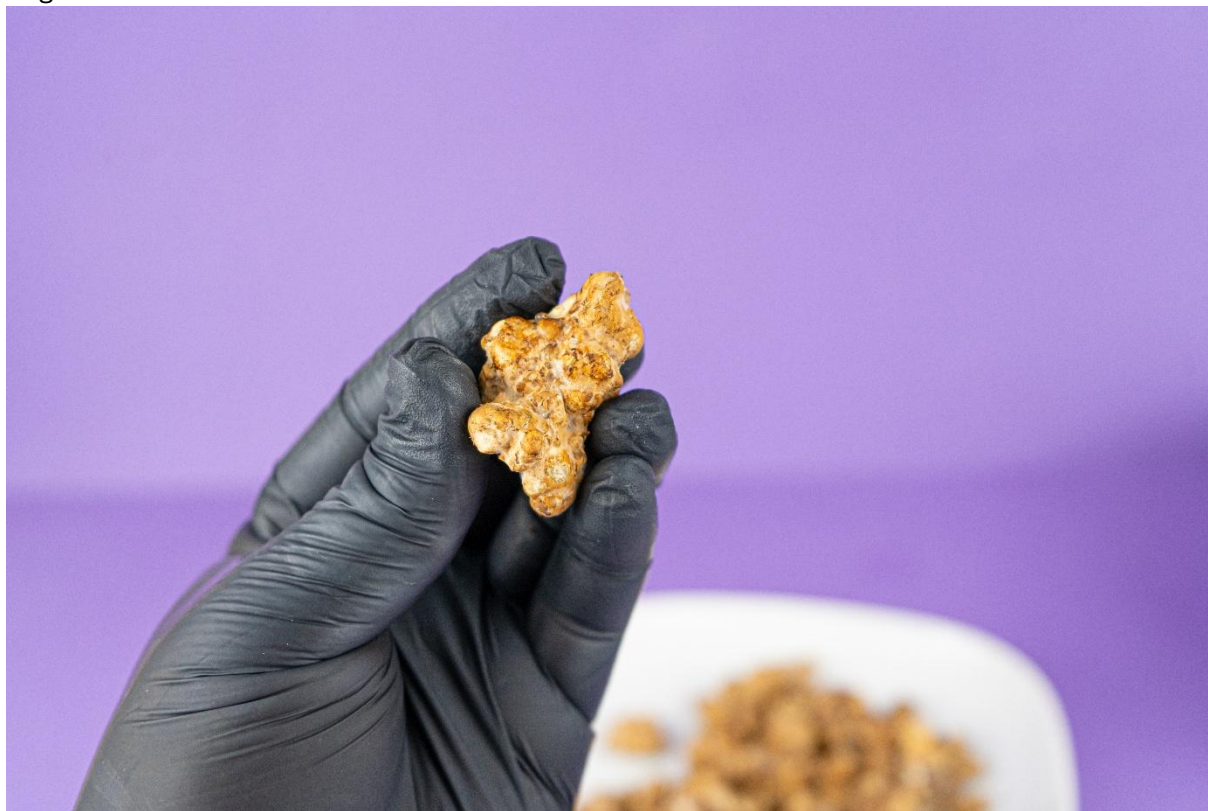
Responsibility lies with the purchaser from the moment the order is placed.
By using our website or manual, you agree to this disclaimer. In the event of disputes between SpaceJars and the purchaser concerning products purchased from SpaceJars, Dutch law shall apply.

SpaceJars.



2. TruffleJars

TruffleJars are jars containing sterile grain in which magic truffles grow. With this manual, we explain exactly how to grow your own truffles! Read the entire manual carefully before you begin.



2.1 Types of Truffles

There are many different types of “Magic Truffles.” Varieties such as Tampanensis, Atlantis, or Mexicana are very popular. It does not matter for this manual which type of TruffleJar you have.

2.2 Lets get Started

Het pakketje is binnen en je wilt aan de slag met je eigen truffelkweek. Maar waar moet je beginnen?

2.2.1 Important

Before we can begin, there are a number of points you should pay close attention to:

1. Never open the jar before harvesting; mold, bacteria, or other contaminants may then enter the jar and ruin the cultivation.
2. Never place the jar in direct sunlight.
3. Ensure a constant temperature between 20°C and 28°C. However, do not place the jar directly on a heater or other heat source; the jar must be kept evenly warm. If part of the jar reaches a temperature higher than 30°C, this can severely damage the truffles' mycelium.

4. Do not damage the filter in the lid. This can also allow contaminants to ruin the cultivation.

2.2.2 Start the Grow

The TruffleJars jar is already inoculated with truffles. When you receive the jar, you will likely already see the mycelium growing.

If the mycelium is unevenly distributed throughout the jar, you can firmly shake the grain once to help the mycelium spread more evenly. Do not do this more than once, as breaking it up too often can weaken the mycelium. In addition, check before shaking that the glass does not contain any cracks or fractures. Safety first!

Keep the jar as much as possible between 20°C and 30°C. A temperature that is too high or too low can inhibit the growth of the truffles. A temperature around 25°C is perfect. Above 20°C the truffles will grow, but the colder it is, the slower the growth.



2.2.3 Patience

Over the course of a few weeks to up to a month, the mycelium (the fungus of the truffles) will spread throughout the jar. Once the jar is fully colonized, small brownish truffles will begin to grow.

They are present throughout the entire jar, but you will only see the truffles that are growing against the glass. In the photos below, you can see how a jar gradually becomes more and more filled with truffles.



The photo above was taken after approximately 2 weeks of growth.



The photo above was taken after approximately 3 weeks of growth.



The photo above was taken after approximately 2 months of growth.

The truffles will continue to grow in the jar for at least one year. The truffles will slowly become larger and heavier over time. After approximately one month, you will have 50–70 grams of truffles; after 2 months this will be around 100–140 grams. After half a year, the jar can contain as much as 150–180 grams of truffles. You can therefore choose for yourself how many truffles you want to harvest!

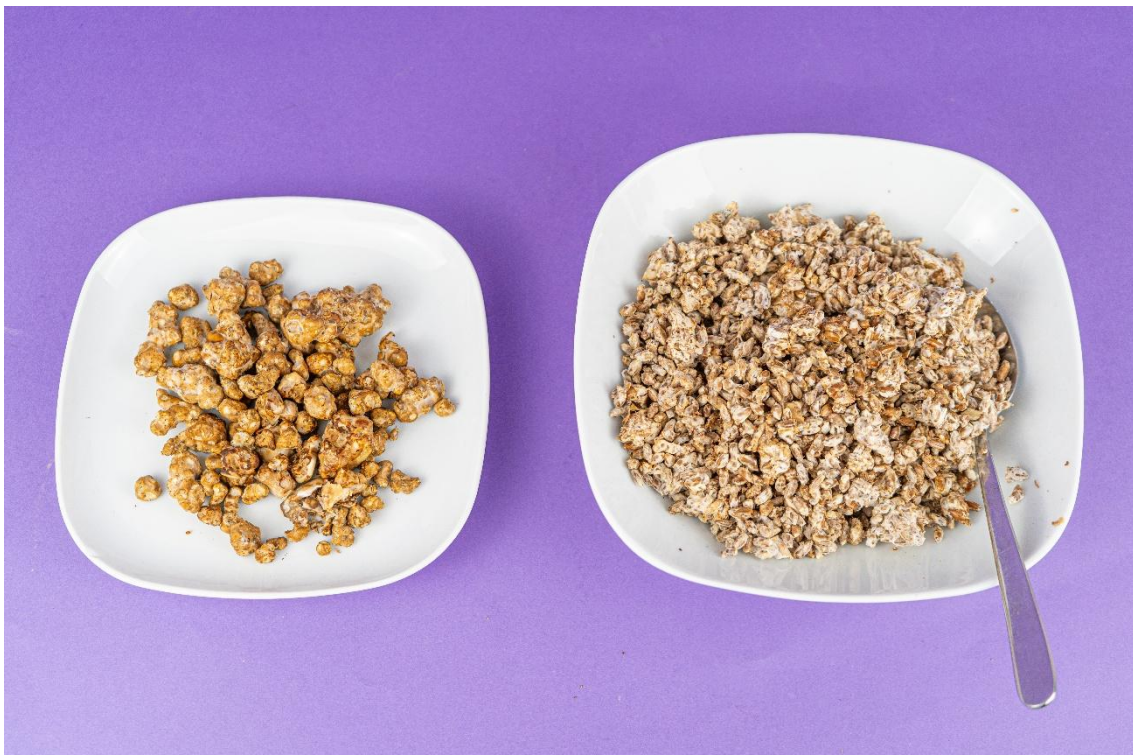
2.2.4 Harvest

Once you are satisfied with the amount of truffles (or you simply can't wait any longer), open the jar for harvesting! Take a plate or container, and carefully scoop all the grain with the truffles out of the jar. This way, you can easily pick the truffles out from the grain.

To achieve a large harvest, we recommend letting the jar grow well for about 2 months. You can observe through the glass when the truffles have reached a good size.



Put on some music and take your time with the harvest. Often, a jar yields much more than you initially expect! The jar contains truffles of all sizes. The largest can be a few centimeters, while the smallest are just a few millimeters.



The photo below also clearly shows the difference between the various sizes of truffles. This jar was harvested after 2 months, so it also contained larger truffles.



You will notice that it can sometimes be difficult to distinguish the truffles from the grains. A helpful tip is that the truffles feel firmer than the grain. In the photo below, the grains are on the left, and the mini truffles are on the right.



2.3 Storage

You can use the truffles immediately, or store them in the refrigerator vacuum-sealed for a few weeks. If you dry them, they will remain good for years!



2.4 Use

Truffles are psychedelics. You may experience visual effects or gain philosophical insights about the world or your life. Each truffle differs, both in effect and intensity. The following effects may occur during your trip:

- Laughing fits
- Heightened senses
- Visual effects
- Altered perception of colors and sounds
- Loss of sense of time
- New ideas about life

The more truffles you take, the stronger the trip. For beginners, always start with a low dose and get used to the experience. You can always gradually increase the dose later. The dose you take also depends on your body weight and how much you have eaten beforehand. The suggestions below are based on a person weighing 75 kilograms.

Microdose: 1–2 grams of truffles

Mild trip: 5 grams of fresh truffles

Normal trip: 10 grams of fresh truffles

Intense trip: 15+ grams of fresh truffles