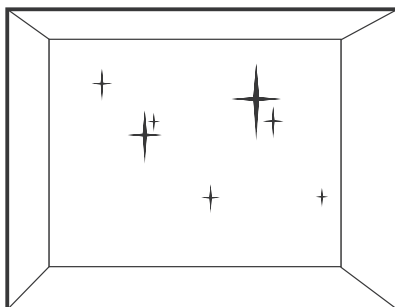


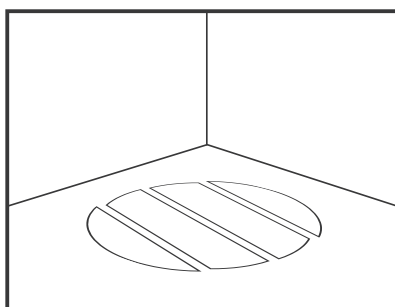
# INSTRUCTIONS

## WALLPAPER CIRCLE - ø 190 CM



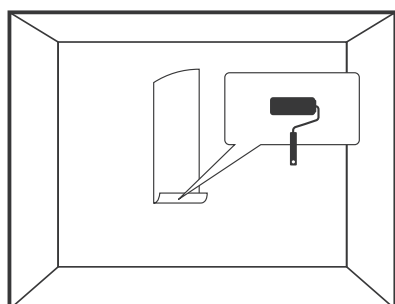
### Step 1

Before you start, make sure the wall is suitable for this type of wallpaper (non-woven). The surface must be dry, clean, smooth, stable, evenly absorbent, and of uniform colour with no old paint or rust showing through. Also make sure to remove any old nails or screws.



### Step 2

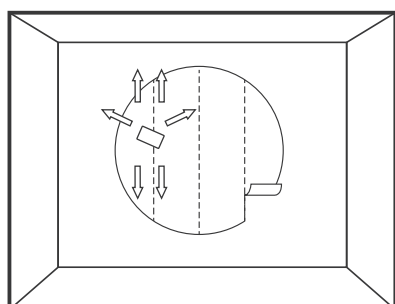
The four sheets of your wallpaper circle are already cut in the shape of a circle. Place them on the floor in the correct order to check out the full image.



### Step 3

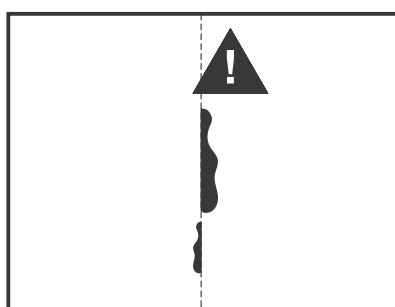
We recommend 'Ready & Roll for non-woven wallpaper' by Perfax, or similar wallpaper glue from other brands. Apply the glue on to the sheets (one by one) with a glue roller. Use a spirit level to make sure the first sheet hangs completely straight.

Start with **sheet number 2** and place the sheet left from the spirit level.



### Step 4

Then place sheet number 3, 4 and 1 to complete the circle. After each sheet, use a wallpaper spatula to make sure there are no air bubbles.



### Step 5

Carefully pat away excess glue with a piece of kitchen paper. Be extra careful with dark colours! Because the wallpaper is 'uncoated' (no protective layer) the ink can come off slightly.

*It is important to avoid excessive heat or draughts when hanging and drying wallpaper, otherwise the wallpaper dries too quickly and this can lead to gapping at seams.*