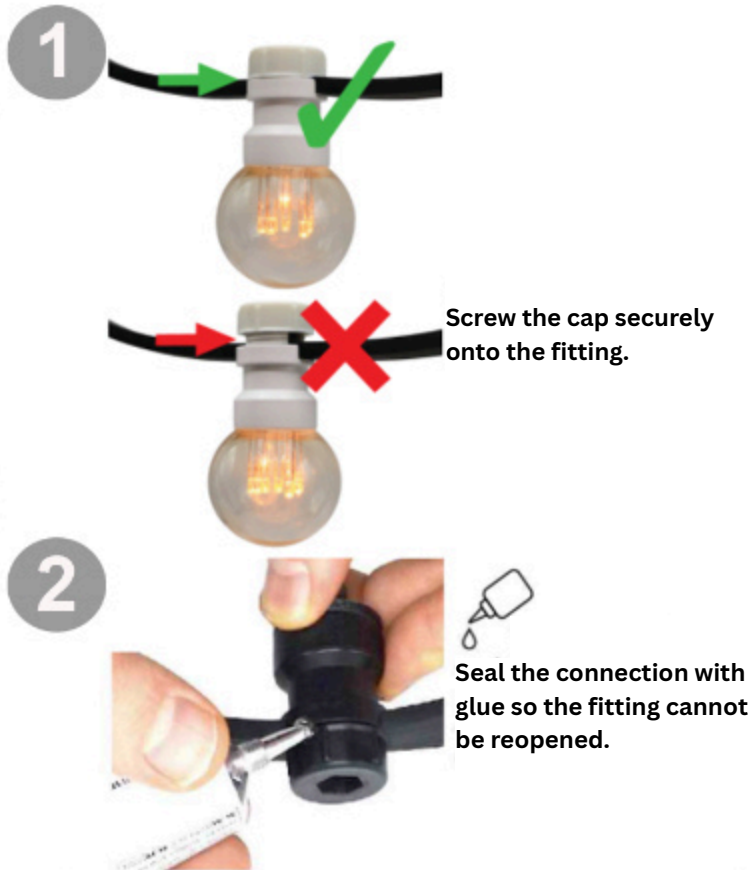


IMPORTANT INFORMATION

READ THIS FIRST BEFORE INSTALLING THE SYSTEM



CE



IP44



191210



Importer:
Lumen Import B.V. Postbus 15980, 1001 NL, Amsterdam

WARNING - BEFORE YOU START:

1) Check the product for any damage or defects before connecting it to the mains power (230V).

2) This product **CANNOT BE MODIFIED**. If any modifications are made, the warranty will be void.

3) Do not place this product near a heat source.

4) **Warning: Risk of electric shock if bulbs are broken or missing. In that case, do not use the product.**

5) This product is not a toy - keep out of reach of children.

THE ENVIRONMENT :

When this product reaches the end of its lifetime, you can return it to a collection point for the recycling of electrical and electronic equipment. Pay attention to the references and symbols on the product, in the manual, or on the packaging. Contact your local municipality for the address of the appropriate recycling facility.

WARRANTY :

The product warranty becomes void if the customer does not follow this manual.