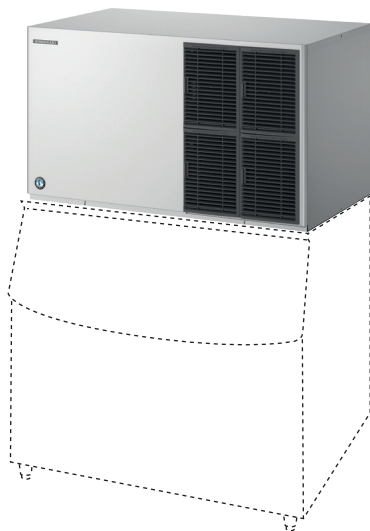




HOSHIZAKI

KM-1301SAJ

Crescent EDGE Ice Maker (Modular)



Production Capacity	Up to 619 kg/24h*
Outside Dimensions W x D x H	1225 x 697 x 695 mm
Electrical Supply	1/208-230V, 60 Hz
Electrical Capacity	60 Hz: 2,18 kW
Weight Gross / Net	154/136 kg

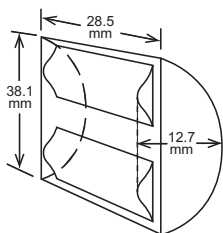
	Model	Condenser	Refrigerant R404A
1 Phase	KM-1301SAJ	Air Cooled	CO ₂ eq:7060 kg
	KM-1301SWJ	Water Cooled	CO ₂ eq:3825 kg
	KM-1301SRJ	Remote Unit	CO ₂ eq:10585 kg
3 Phase	KM-1301SAJ3	Air Cooled	CO ₂ eq:7450 kg
	KM-1301SWJ3	Water Cooled	CO ₂ eq:3825 kg
	KM-1301SRJ3	Remote Unit	CO ₂ eq:10585 kg

Type of Ice	Crescent EDGE
Air Filter	Removable air filter

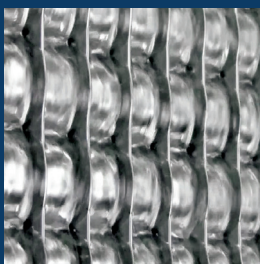
Corresponding Bins & Top Kits:

Bin	Top Kit
B-801SA	Top Kit not required
B-800SF	Top Kit not required
B-900SF	Need HS-2032
B-1150SS / B-1300SS	Top Kit included
B-1500SS / B-1650SS	Top Kit included

*Air Temperature 21°C / Water Temperature 10°C. Based on 1 phase air cooled model.



Double sided ice making system with stainless steel for better longevity and hygiene



Versatile usage for drinks, display, bottle cooling and more



Audible alert when the machine is in need of service with the EverCheck™ control board



Subject to technical alterations

Hoshizaki Europe B.V.
Headquarters Export EMEA
Burgemeester Stramanweg 101
1101 AA Amsterdam
The Netherlands

sales@hoshizaki.nl
Tel. +31 (0)20 6918499

Please visit our website for further information:
www.hoshizaki-europe.com



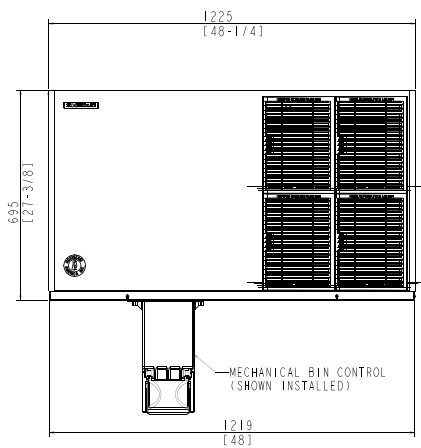


HOSHIZAKI

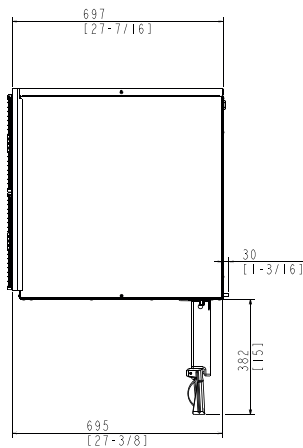
KM-1301SAJ

Technical Drawings (Air cooled 1 phase only)

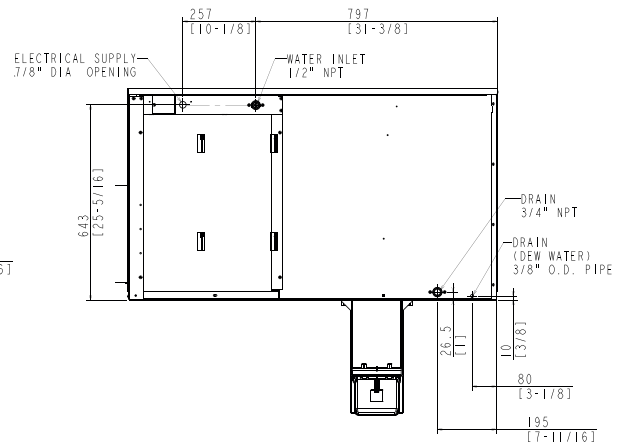
Front View



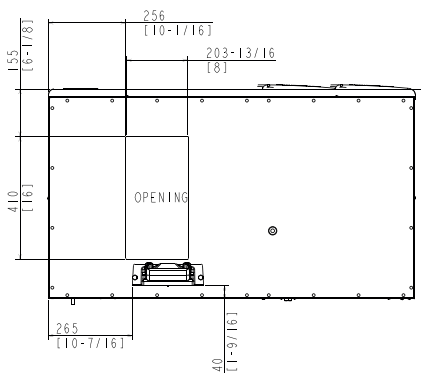
Side View



Rear View



Base View



Specifications: mm/inches
Subject to technical alterations

Hoshizaki Europe B.V.
Headquarters Export EMEA
Burgemeester Stramanweg 101
1101 AA Amsterdam
The Netherlands

sales@hoshizaki.nl
Tel. +31 (0)20 6918499

Please visit our website for further information:
www.hoshizaki-europe.com

