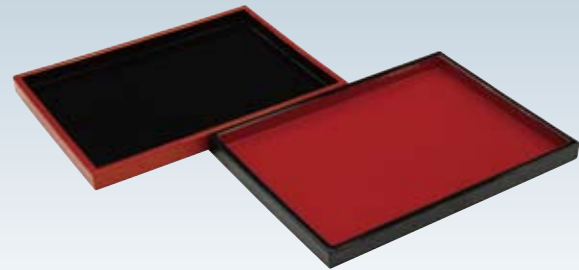




A Must for Any Successful Sushi Retailing Outlet

DISPLAY



DX tray

Plastic trays of wooden type decorates various food neatly.

* Measurements: 317x 235 x 27mm

* Color: Red with Black frame

Black with Red frame



Soka display trays

For beautiful and splendid displays of wrapped sushi! The trays are reversible, with red and black on opposite sides.

* Measurements: 285 x 255 x 45mm

PRODUCTION

- Rice cooking net
- Rice pack
- rice-preservation sheets
- Ace Carry (Shari containers carrier)
- SOFTON PLUS
- Easy-open Sushi wrapping film
- Anti-fogging wrapping film



PRESERVATION

Shari containers
Shari trays



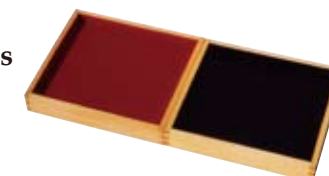
SANITATION

Polyethylene disposable gloves



DISPLAY

Menu blocks
Soka display trays
Refrigerated showcases



Menu blocks

Made of high-quality hinoki wood, which harmonizes with the soka display trays. Use the menu blocks to beautifully highlight product and price in script.



Refrigerated showcases

Showcases that allow sushi to be delectably displayed while providing refrigeration to preserve flavor. Showcases may be ordered with store logos.

* Measurements:

Orders for special sizes are accepted.

* Designs and specifications subject to change without notice.



Suzumo Machinery Co., Ltd.

Overseas Business Division

2-23-2, Toyotamakita, Nerima-ku,

Tokyo 176-0012, Japan

Tel. +81 3-3993-1407 Fax. +81 3-3993-1756

e-mail overseas@suzumo.co.jp

URL http://www.suzumokikou.com

< Contact in North America >

Suzumo International Corporation

379 Van Ness Ave., Suite 1406

Torrance, California 90501, U.S.A.

Tel. +1 310-328-0400

Fax. +1 310-328-2700

e-mail sic@suzumokikou.com

Suzumo production materials, for intelligent and delightful displays of mouth watering tastes

Providing delicious sushi intelligently and hygienically, and delighting customers with presentations and displays, are the secret to building a thriving sushi retailing operation. Use Suzumo's original materials as your aid in developing success.

PRODUCTION



Rice cooking net

Rice wrapped in the cooking net is placed in the pot to be steamed. This prevents it from sticking to the pot and makes removal and carrying to the next process easier.

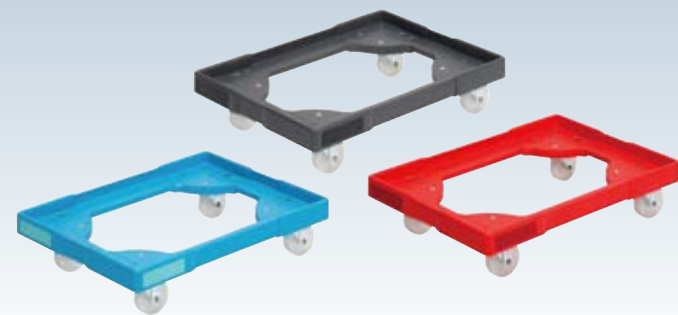
* Measurements: Small: 750 x 750mm
Large: 1,000 x 1,000mm



Rice pack (Rice-preservation sheets)

A special paper controls the moisture of rice after cooking. Used together with Suzumo's rice containers, these sheets will help preserve freshness, and keep the rice away from steam turning back.

* Z40-15D for 10kg container: 410 x 340 x 500mm
* Z40-20D for 15kg container: 410 x 340 x 550mm
Available in lots of 250 sheets



Ace Carry (Shari containers carrier)

The compact and light weight carrier with the casters which can transfer the heavy Shari container easily. It is applied the material which do not have rust.

* Color: Dark Gray / Blue / Red



SOFTON PLUS

An odorless and harmless spray made of sterile vegetable oil, used to prevent cooked rice from sticking to lifting blades and other machine parts that come into contact with the rice.

* Quantity per can: 300ml

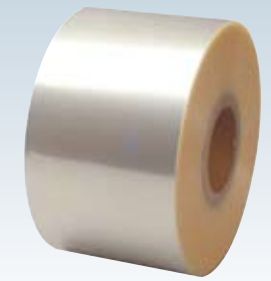


Easy-open Sushi wrapping film

By pulling the both side of slit on film, it can be opened easily. Transparency, Red or Green striped patterned.

* Widths: 135mm, 150mm"

* Length of roll: 500m Available in lots of 8 rolls



Anti-fogging wrapping film

A 30-micron, anti-fogging film for wrapping sushi. The film's firm flexibility produces beautifully formed wrappings.

* Widths: 135mm, 150mm

* Length of roll: 1,000m Available in lots of 4 rolls

PRESERVATION



Shari containers

Features excellent heat-insulating capabilities for cooked rice. When used in conjunction with Rice pack, these containers preserve the flavor of the shari for long periods of time.

* GRC-15 for 10kg: 490 x 380 x 220mm

* GRC-20 for 15kg: 480 x 370 x 255mm



Shari trays

Trays for shari containers, which permit shari dama to be stored in rows. Each tray can hold up to 50 - 60 shari dama. The trays promote efficiency, by making it easier to store and handle the shari dama.

* GRT-15 can be put 3 trays into GRC-15 or 4 trays into GRC-20

* GRT-20 / GRT-20S can be put 5 trays into GRC-20

SANITATION



Polyethylene disposable gloves

An essential aid for the maintenance of hygiene. Rice will never stick to gloves during handling. Gloves can be conveniently extracted from packs one at a time.

* Pack: 50 pcs. x 60 packs / box

* Size: Small / Medium