



**Electrolux**

## Modular Cooking Range Line 900XP 800 mm Open Base 1 Module

ITEM # \_\_\_\_\_

MODEL # \_\_\_\_\_

NAME # \_\_\_\_\_

SIS # \_\_\_\_\_

AIA # \_\_\_\_\_



**Electrolux**



Modular Cooking Range Line  
900XP 800 mm Open Base 1 Module

**391154 (E9BANH0000)**      Open base cupboard, 1  
module

### Short Form Specification

**Item No.** \_\_\_\_\_

To be installed below other 900XP top units in island type installations with operations from one side. Open base to store pots, pans, sheet pans etc. Body and internal structure of unit entirely in stainless steel. Delivered with 150 mm height adjustable feet.

**APPROVAL:** \_\_\_\_\_

### Main Features

- Unit can be easily installed below other 900XP top models.
- Unit delivered with 50 mm height adjustable feet in Stainless steel.
- Open base compartment for storage of pots, pans, sheet pans, etc.
- Doors with handles, drawers, heating kits and runners for GN containers can be ordered separately.

### Construction

- Constructed in Stainless steel with Scotch Brite finish to meet the highest hygiene standards.
- Unit is 930 mm deep to give a larger working surface area.

Modular Cooking Range Line  
900XP 800 mm Open Base 1 Module



### Optional Accessories

- 4 wheels, 2 swivelling with brake (700/900XP). It is mandatory to install with base supports for feet/wheels. PNC 206135
- Flanged feet kit PNC 206136
- 2 supports runners for open base cupboard 400mm for GN1/1 PNC 206145
- Frontal kicking strip for concrete installation, 800mm PNC 206148
- Frontal kicking strip for concrete installation, 1000mm PNC 206150
- Frontal kicking strip for concrete installation, 1200mm PNC 206151
- Frontal kicking strip for concrete installation, 1600mm PNC 206152
- Frontal kicking strip, 800mm (not for refr-freezer base) PNC 206176
- Frontal kicking strip, 1000mm (not for refr-freezer base) PNC 206177
- Frontal kicking strip, 1200mm (not for refr-freezer base) PNC 206178
- Frontal kicking strip, 1600mm (not for refr-freezer base) PNC 206179
- Pair of side kicking strips (not for refr-freezer base) PNC 206180
- 4 feet for concrete installation PNC 206210
- Central support for installation of drawers and grid (on 800/1200mm bases) and of doors (on 1200mm bases) PNC 206245
- Electric heating kit for cupboards. 1 required per 400mm module. PNC 206259
- Water coulumn with swivel arm (water column extension not included) PNC 206289
- 2 drawers for open base cupboards, 100mm height PNC 206334
- Door for open base cupboard PNC 206350
- 2 DRAWERS (H=100MM) BASE 900 LINE-ZAN PNC 206361
- Wok pan support for open burners (700/900) PNC 206363
- Base support for feet or wheels - 400mm (700/900XP) PNC 206366
- Base support for feet or wheels - 800mm (700/900) PNC 206367
- Base support for feet or wheels - 1200mm (700/900) PNC 206368
- Base support for feet or wheels - 1600mm (700/900) PNC 206369
- Base support for feet or wheels - 2000mm (700/900) PNC 206370





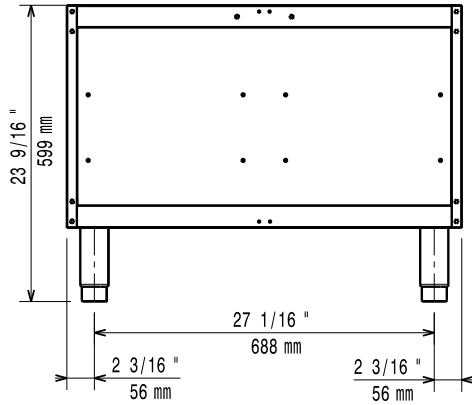
Electrolux

# Modular Cooking Range Line 900XP 800 mm Open Base 1 Module

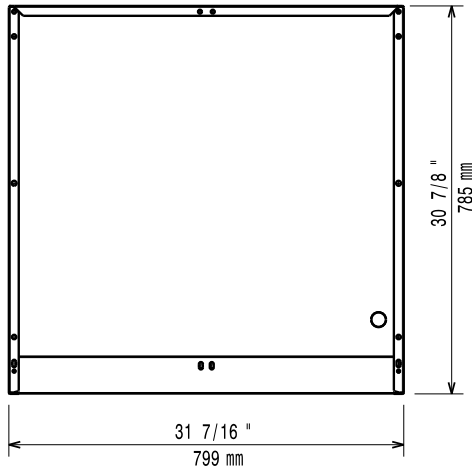
## Key Information

<b>External dimensions, Height</b>	
<b>391154 (E9BANH0000)</b>	600 mm
<b>External dimensions, Width</b>	800 mm
<b>External dimensions, Depth</b>	785 mm
<b>Net weight:</b>	35 kg

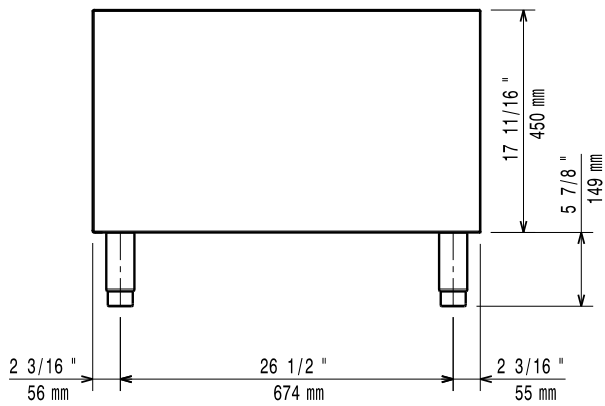
Front



Top



Side



Modular Cooking Range Line  
900XP 800 mm Open Base 1 Module

The company reserves the right to make modifications to the products without prior notice. All information correct at time of printing.

