



T&S BRASS AND BRONZE WORKS, INC.

2 Saddleback Cove / P.O. Box 1088
Travelers Rest, SC 29690

Model No.

UK-2DP12

Item No.

Travelers Rest, SC: 800-476-4103 • Simi Valley, CA: 800-423-0150 • Fax: 864-834-3518 • www.tsbrass.com



This Space for Architect/Engineer Approval

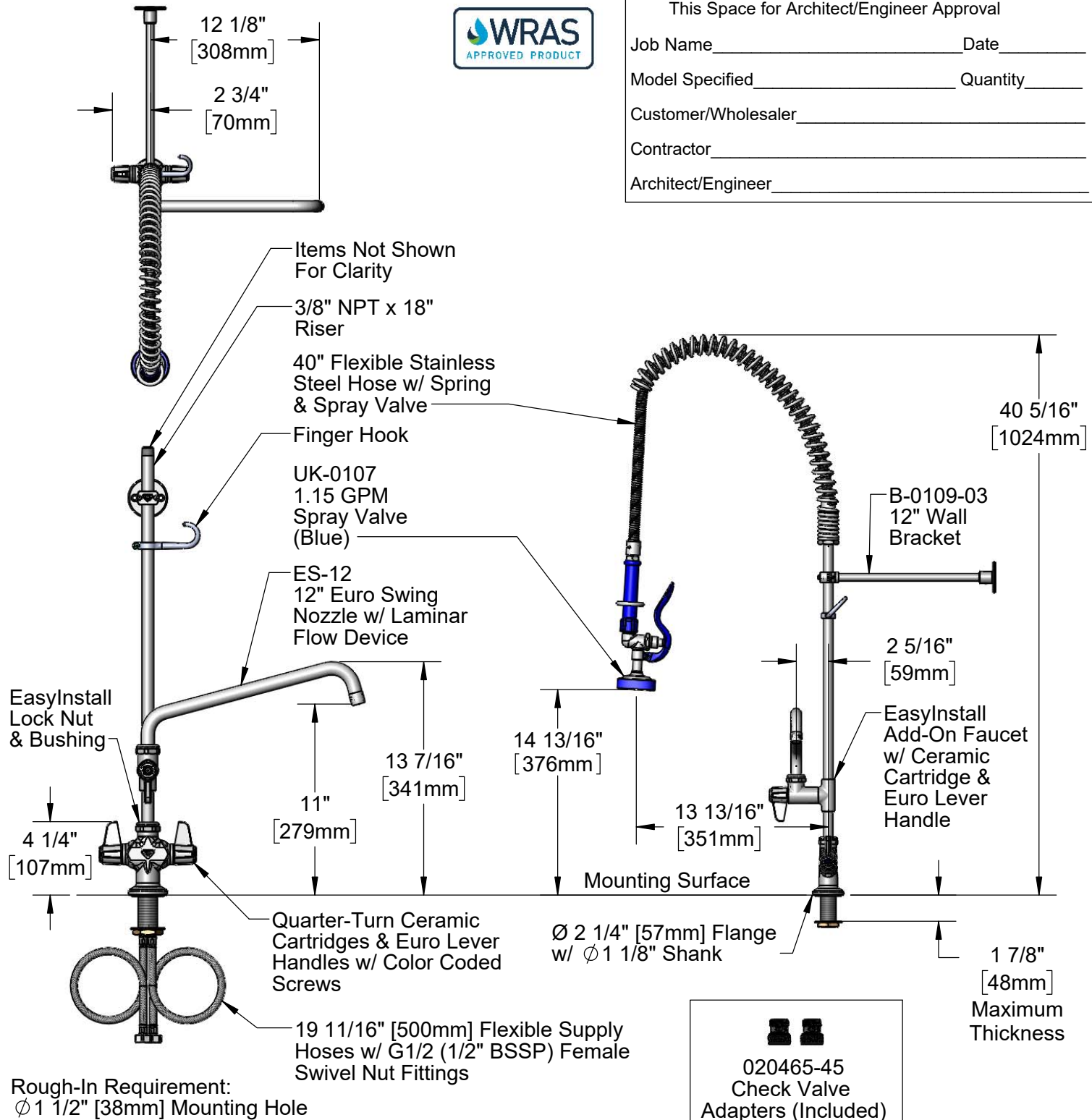
Job Name _____ Date _____

Model Specified _____ Quantity _____

Customer/Wholesaler _____

Contractor _____

Architect/Engineer _____



Product Specifications:
Pre-Rinse Unit: EasyInstall Single Hole Deck Mount Mixing Faucet, Quarter-Turn Ceramic Cartridges, Euro Lever Handles, EasyInstall Add-On Faucet, 12" Euro Swing Nozzle, 40" Flexible Stainless Steel Hose, 1.15 GPM Spray Valve (Blue), 12" Wall Bracket & (2) 19 11/16" (1/2" BSSP) Flexible Supply Hoses w/ G1/2 (1/2" BSSP) Female Swivel Nut Fittings

Product Compliance:
WRAS Approved Product (UK)



T&S BRASS AND BRONZE WORKS, INC.

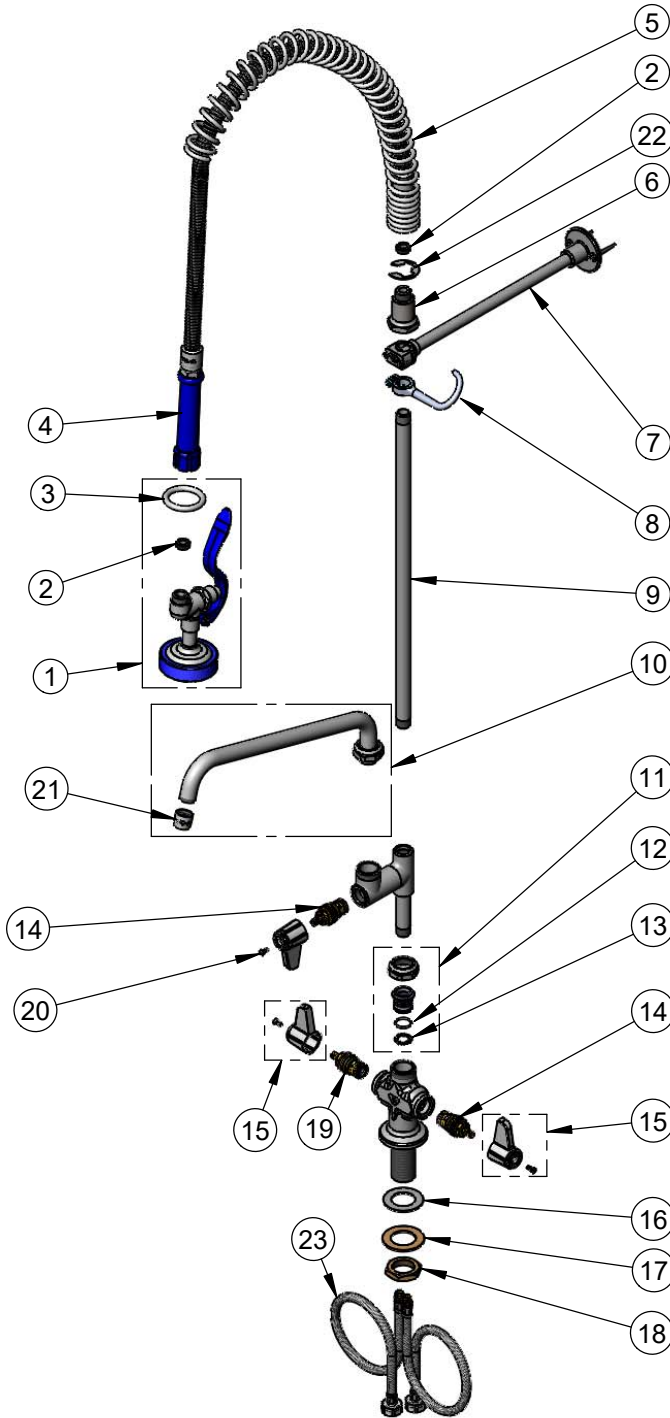
2 Saddleback Cove / P.O. Box 1088
Travelers Rest, SC 29690

Model No.

UK-2DP12

Item No.

Travelers Rest, SC: 800-476-4103 • Simi Valley, CA: 800-423-0150 • Fax: 864-834-3518 • www.tsbrass.com



ITEM NO.	SALES NO.	DESCRIPTION
1	UK-0107	1.15 GPM Spray Valve (Blue)
2	010476-45	#27 Washer
3	000907-45	Spray Valve Hold Down Ring
4	UK-0040-H	40" Flexible Stainless Steel Hose w/ Blue Handle
5	000888-45	EasyInstall Overhead Spring
6	000821-40	Spring Body
7	B-0109-03	12" Wall Bracket
8	004R	Finger Hook
9	000369-40	3/8" NPT x 18" Riser
10	ES-12	12" Euro Swing Nozzle
11	EU-EZ-K	Euro EasyInstall Kit: Nut, Bushing, O-Ring & Lock Washer
12	001062-45	O-Ring
13	014200-45	Star Washer, Anti-Rotation
14	013788-45	equip Quarter-Turn Ceramic Cartridge, LTC
15	E-HDL-L	Euro Lever Handle w/ Color Coded Screws
16	014612-45	Deck Seal
17	002290-45	Lock Washer
18	000965-45	Lock Nut
19	013787-45	equip Quarter-Turn Ceramic Cartridge, RTC
20	013849-45	Screw, 4mm Metric (10)
21	014250-45	Laminar Flow Device, 3/4-27 UN Female
22	019389-45	E-Style Retaining Ring
23	012436-45DR	Flexible Connector Hose
24	020465-45	Check Valve Adapter

Product Specifications:

Pre-Rinse Unit: EasyInstall Single Hole Deck Mount Mixing Faucet, Quarter-Turn Ceramic Cartridges, Euro Lever Handles, EasyInstall Add-On Faucet, 12" Euro Swing Nozzle, 40" Flexible Stainless Steel Hose, 1.15 GPM Spray Valve (Blue), 12" Wall Bracket & (2) 19 11/16" Flexible Supply Hoses w/ G1/2 (1/2" BSSP) Female Swivel Nut Fittings

Product Compliance:

WRAS Approved Product (UK)