



BC EASY 2 GR



TYPE
Countertop

PRODUCTION SYSTEM
GR

CONTROL
E.Co.S.

NO OF FLAVOURS
2

Two-flavour countertop machine, gravity-fed, with E.Co.S. technology, for the production of soft serve, express gelato and frozen yogurt.

TECHNICAL SPECIFICATIONS

Type	Countertop	Production system	GR	Production capacity	26 kg/h
No of flavours	2	No of hoppers	2	Hoppers capacity	11 l
Cylinder capacity	2 x 1,7 l	Beater type	SF1	Hopper mixer	Yes
Control	E.Co.S.	4D Remote Control	No		

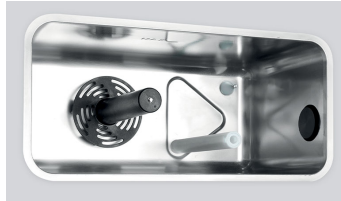
CONFIGURATIONS (CODE - CONDENSATION - POWER SUPPLY)

BC262GRA1 > Air 1Ph - 220/240V - 50Hz	BC262GRA2 > Air 3Ph - 380/415V - 50Hz
BC262GRA3 > Air 1Ph - 208/230V - 60Hz	BC262GRA4 > Air 3Ph - 208/230V - 60Hz
BC262GRA5 > Air 3Ph - 380/415V - 60Hz	BC262GRW1 > Water 1Ph - 220/240V - 50Hz
BC262GRW2 > Water 3Ph - 380/415V - 50Hz	BC262GRW3 > Water 1Ph - 208/230V - 60Hz
BC262GRW4 > Water 3Ph - 208/230V - 60Hz	BC262GRW5 > Water 3Ph - 380/415V - 60Hz

HIGHLIGHTS

GRAVITY

THE GRAVITY PRODUCTION SYSTEM HAS A METERING VALVE THAT ALLOWS THE MIXTURE AND AIR TO PASS INTO THE FREEZING CYLINDER, EXPLOITING THE LAW OF GRAVITY.



E.CO.S.

FOR STRAIGHT-FORWARD, TOTAL CONTROL OF THE MACHINE.



Via Zanica, 6C - 24050, Grassobbio (BG) - ITALY

Ph. +39 035 525138 - Fax +39 035 4522397

info@gelmatic.com