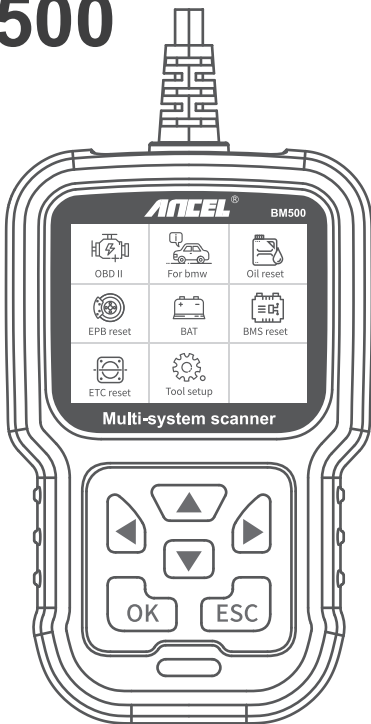


ANCEL[®]

USER'S MANUAL

BM500



SAFETY PRECAUTIONS

To prevent personal injury or damage to vehicles and/or the scan tool, read this instruction manual first and observe the following safety precautions at a minimum whenever working on a vehicle:

Always perform automotive testing in a safe environment.

Do not attempt to operate or observe the tool while driving a vehicle. Operating or observing the tool will cause driver distraction and could cause a fatal accident.

Wear safety eye protection that meets ANSI standards.

Operate the vehicle in a well ventilated work area: Exhaust gases are Poisonous.

Put the transmission in PARK (for automatic transmission) or NEUTRAL (for manual transmission) and make sure the parking brake is engaged.

Keep the scan tool dry, clean, free from oil/water or grease. Use a mild detergent on a clean cloth to clean the outside of the scan tool, when necessary.

ABOUT BM500

1. Coverage

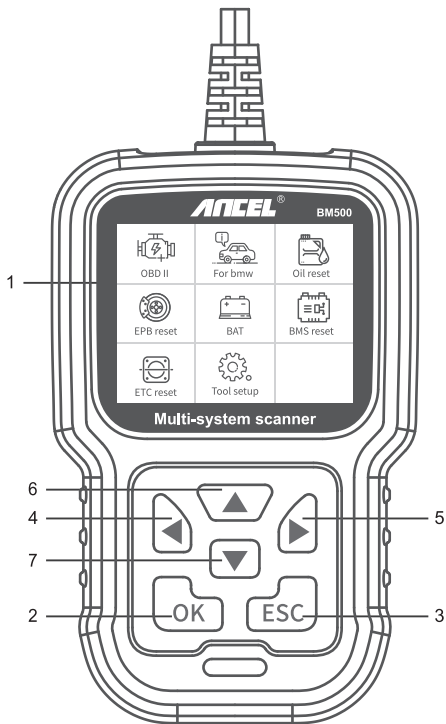
1) BM500 supports for BMW, Mini and Rolls-Royce brand cars. It works on all the systems such as engine, transmission, ABS and airbag etc.

2) Supports OBDII/EOBD Modes of operation.

2. Product specification

- 2.4" 240x320 pixels LCD screen..
- Operating Voltage: 8V-18V.
- Operating Temperature: 0°C-60°C(32-140°F).
- Storage Temperature: -20°C-70°C(4-158°F).

3. Appearance and buttons description



1. LCD SCREEN – Indicates test results. Backlit, 320 x 240 pixels display
2. [OK] BUTTON – Confirms a selection (or action) from a menu.
3. [ESC] BUTTON – Cancels a selection (or action) from a menu or returns to the menu.

4. [LEFT] SCROLL BUTTON – In the menu mode through the menu and sub menu move to the left, when rolling in a data interface, use the left button can be moved to the last screen.
5. [RIGHT] SCROLL BUTTON – In the menu mode through the menu and sub menu item move to the right, when rolling in the data interface, use the right button can be moved to the next screen.
6. [UP] SCROLL BUTTON – In the menu mode through the menu and sub menu item moving up. When retrieving data for more than a screen by moving up the screen to the previous screen for more data.
7. [DOWN] SCROLL BUTTON – In the menu mode through the menu and sub menu item moves down. When retrieving data more than one screen, by moving down the screen to the next screen for more data.

OPERATION INSTRUCTIONS

1. Connect BM500

1.1 Turn the ignition on.

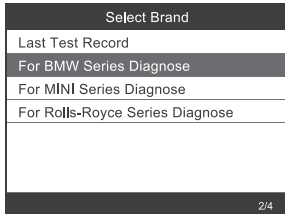
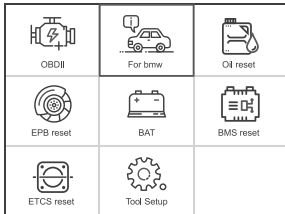
1.2 Locate the vehicle's 16-pin Data Link Connector (DLC).

2. BM500 Features

2.1 For bmw

Choose [For bmw] and then select [For BMW Series Diagnose].

The screen will show all car series. As follow:



For example: Choose [For 5 Series] and select [G38(2017-Present)], it displays as follow:

Select Series
For 1 Series
For 2 Series
For 3 Series
For 4 Series
For 5 Series
For 6 Series
For 7 Series

5/11

Select Chassis
G38(2017-Present)

8/8

2.2 Basic Functions

Choose [Basic Functions] and it displays as follow:

Select Function
Basic Functions
Special Functions
Erase All Systems Fault Codes

1/3

System scan is to scan all vehicle systems.

Manual Select is to display all possible systems, select one of the systems to diagnosis.

Choose [Manual Select] and it displays as follows:

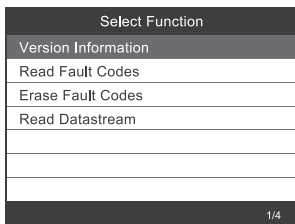
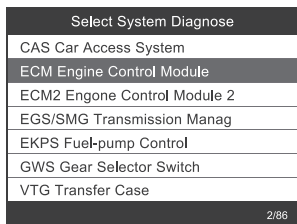
Select Menu
System Scan
Manual Select

2/2

Select System Diagnose
CAS Car Access System
ECM Engine Control Module
ECM2 Engone Control Module 2
EGS/SMG Transmission Manag
EKPS Fuel-pump Control
GWS Gear Selector Switch
VTG Transfer Case

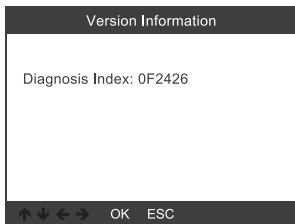
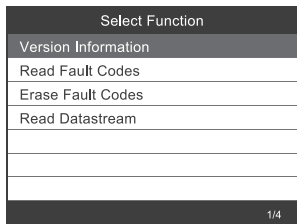
1/86

For example: Choose [ECM Engine Control Module] and it displays as follows:



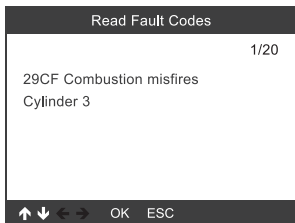
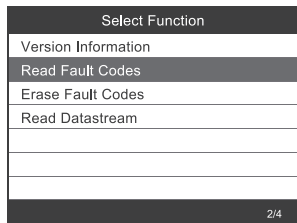
2.2.1 Version Information

Choose [Version Information] and it displays as follows :



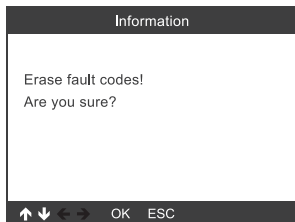
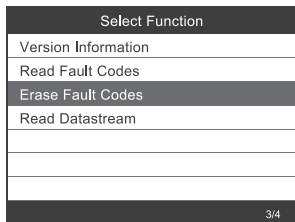
2.2.2 Read Fault Codes

Choose [Read Fault Codes]. Press up or down button to check each fault code as follows:

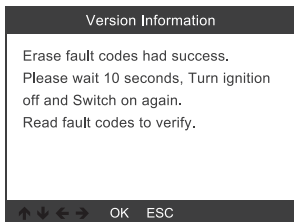


2.2.3 Erase Fault Codes

Choose [Erase Fault Codes] then press [OK] button as follows:

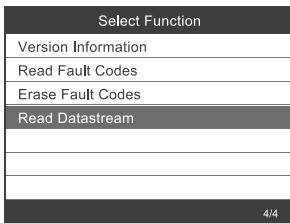


You need to press [OK] again to clear the fault codes, or you can press [ESC] button to give up clearing fault codes, as follows:



2.2.4 Read Datastream

Choose [Read Datastream] then press [OK] button as follow:



2.3.1 CBS Functions

Choose [CBS Reset] function step by step and it displays as follow :

Special Function
CBS Reset
PCM Clear adaptations
Battery Management
EPB Electronic Parking Brake

1/4

Special Functions
Engine oil: 73%
Vehicle check: 100%
Front Brake: 99%
Rear Brake: 98%
Brake fluid: 98%
Microfilter: 98%
Vehicle inspection

1/8

2.3.2 PCM Clear adaptations

Choose [PCM Clear adaptations] function step by step and it displays as follows:

Special Function
CBS Reset
PCM Clear adaptations
Battery Management
EPB Electronic Parking Brake

2/4

Special Functions
Clear adaptations
DME>Delete adaptation variable

2/2

Special Functions
(1)
The adaptation values can be reset in the next test step. (1).Reset VANOS adaptation values.

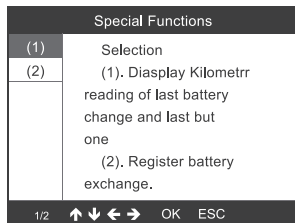
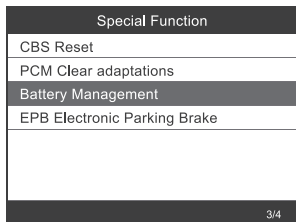
1/1 ↑ ↓ ← → OK ESC

Special Functions
Service function finished

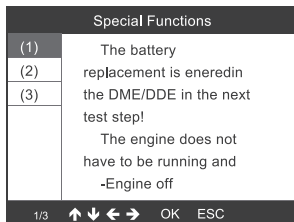
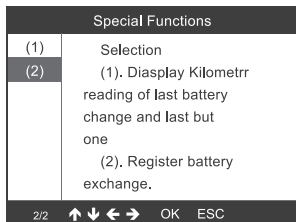
1/2 ↑ ↓ ← → OK ESC

2.3.3 Battery Management

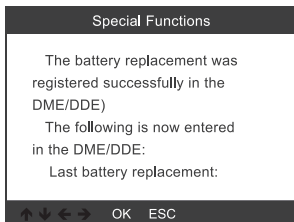
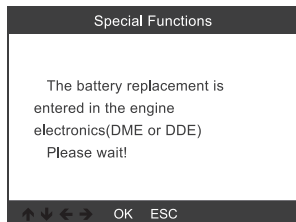
Choose [Battery Management] function step by step and it displays as follows:



Step 1: Use the up or down button to select the (2) option and press the [OK] button to achieve register battery replacement and display the following menu:

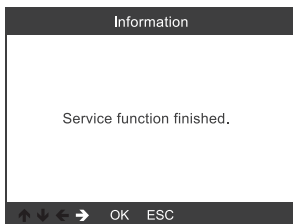
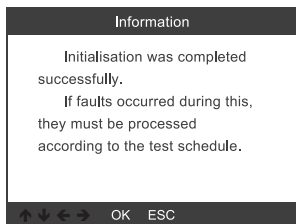
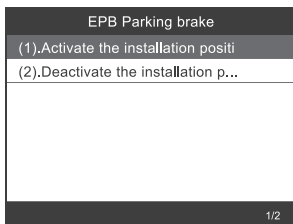
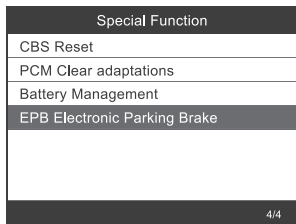


Step 2: Use the up or down button to select the (1) option and press the [OK] button to display the following menu:



2.3.4 EPB Electronic Parking Brake

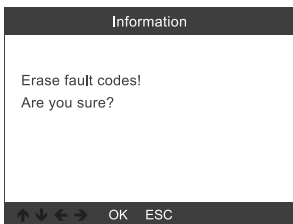
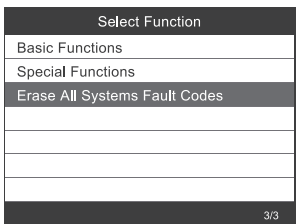
Choose [EPB Electronic Parking brake] function step by step and it displays as follows:



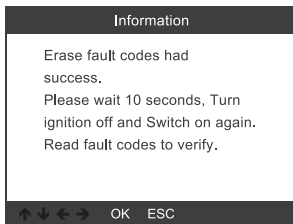
Note: The special features of each model are different, please according to the actual operation.

2.4 Erase All Systems Fault Codes

Choose [Erase All Systems Fault Codes] and it displays as follows:



You need to press [OK] again to clear the fault codes. Or you can press [ESC] button to give up clearing fault codes. It shows as the follow after clearing the fault codes.

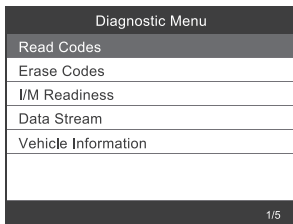


Note: For BMW car after 2003.

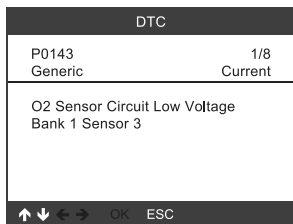
3. OBDII System

3.1 Read Codes

1) Use the UP/DOWN scroll button to select Read Codes from the Diagnostic Menu and press [OK].

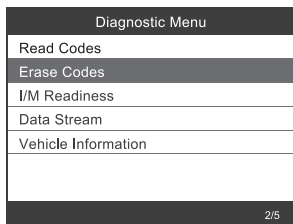


2) View DTCs and their definitions on screen.

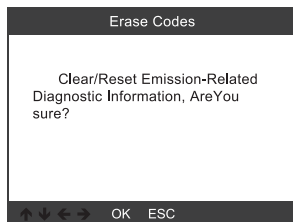


3.2 Erase Codes

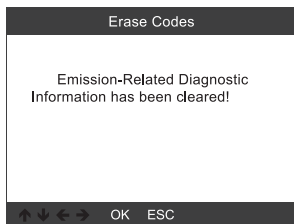
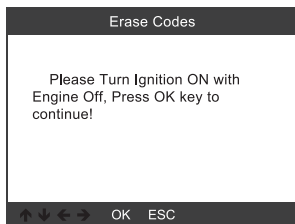
1) Use the UP/DOWN scroll buttons to select Erase Codes from the Diagnostic Menu and press [OK].



2) A warning message comes up asking for your confirmation.

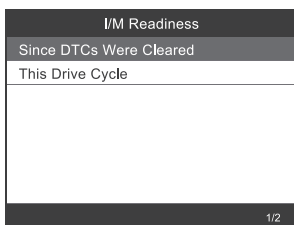
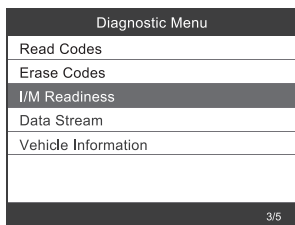


3) Press [OK] to confirm.



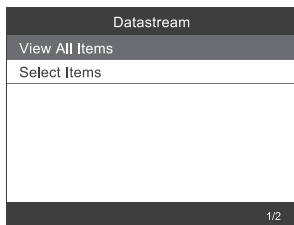
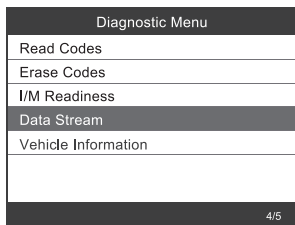
3.3 I/M Readiness

1) Use the UP/DOWN scroll button to select I/M Readiness from the Diagnostic Menu and press [OK].



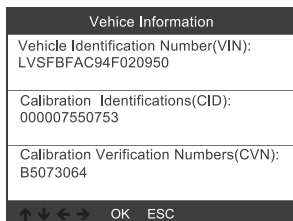
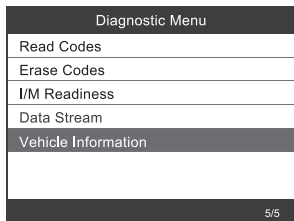
3.4 Data Stream

Use the UP/DOWN scroll button to select Data Stream from the Diagnostic Menu and press [OK].



3.5 Vehicle Information.

Select [Vehicle Information] and press [OK], the screen will display the formation such as VIN (Vehicle identification Number) , CID (Calibration ID) and CVN (Calibration verify number).

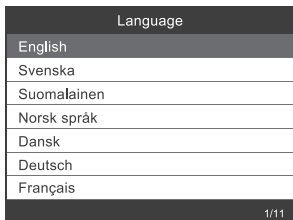
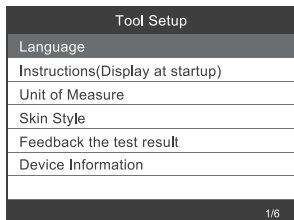


4. Tool Setup

4.1 Language

Choose [Language] and it displays as follows:

Interface languages: English, French, German, Spanish, Russian, Portuguese, Sweden, Finland, Norway, Denmark, Italian.



4.2 Instructions (Display at startup)

Choose [Instructions (Display at startup)] and it displays as follows:

Tool Setup
Language
Instructions(Display at startup)
Unit of Measure
Skin Style
Feedback the test result
Device Information

2/6

Beeper
OFF
ON

1/2

4.3 Unit of measure

Choose Unit of measure and it displays as follows:

Tool Setup
Language
Instructions(Display at startup)
Unit of Measure
Skin Style
Feedback the test result
Device Information

3/6

Unit of measure
Metric
Imperial

1/2

4.4 Skin Style

Choose Unit of measure and it displays as follows:

Tool Setup
Language
Instructions(Display at startup)
Unit of Measure
Skin Style
Feedback the test result
Device Information

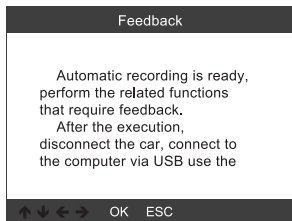
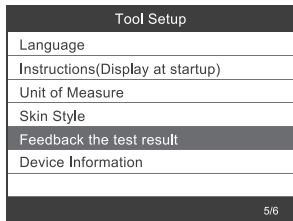
4/6

Skin Style
Sky Gray
Gem Blue

1/2

4.5 Feedback the test result

1. If it shows connected error with vehicle or other problem during using, please using the feedback function. Choose [Feedback the test result] and it displays as follows:



Next : Press ESC Button several times and return to the main menu.

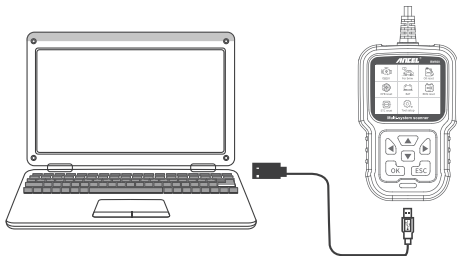
2. For example: Register battery change fail.

Select [Register battery change] option, and do Register battery change again (This step is very important).

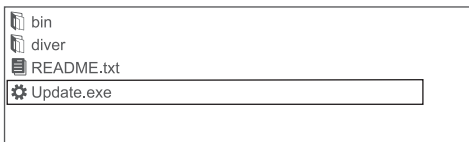
Note : Keep tool connect with vehicle in above steps.

3.After doing register battery change, disconnect with car

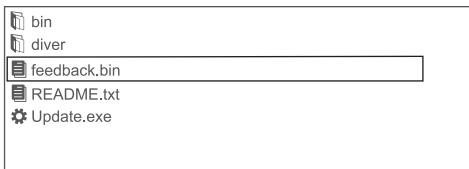
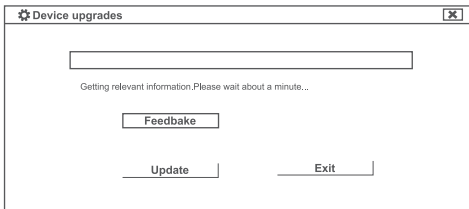
4. Transfer data to your computer and generate feedback file (You need to download upgrade file on the computer from ANCEL website).The device is connected with computer through USB cable.



Choose “Update” file and it displays as follow:



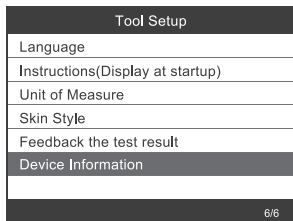
Click “Feedback” and it displays as follow:



Please send the feedback.bin file to support@anceltech.com

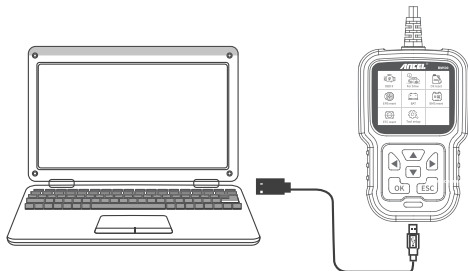
4.6 Device Information

Choose Device Information and it displays as follows:



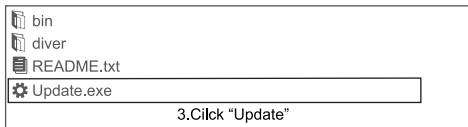
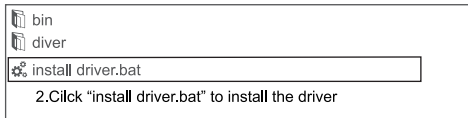
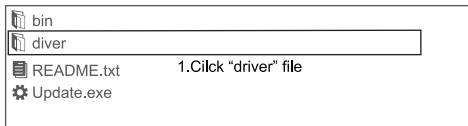
5. Update

1. Download update software.
2. Connect the device with computer through USB cable.



3. The update software is only supported by win7/8/10.

* Click "install driver.bat" in the driver files to install the driver, if computer system is Windows 7



* Windows 8/10 can run update software directly.

Warranty

- 1) This warranty is limited to the person who purchases ANCEL products.
- 2) ANCEL product is warranted against defects in materials and workmanship for one year (12 months) from date of delivery to the user.

OBDSpace TECHNOLOGY CO.,LTD

Address: Runfeng office longhua district Shenzhen GuangDong518000 P.R.China

Tel: 0755-81751202

E-mail: support@anceltech.com

Website: www.anceltech.com



MADE IN CHINA