

# vLinker FD Quick Start Guide for Android and Windows



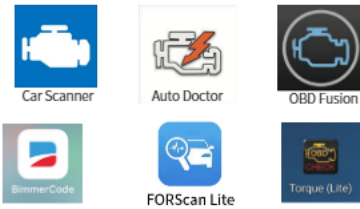
## 1. What OBDII Protocols does vLinker FD supports?

- ✓ SAE J1850 PWM    ✓SAE J1850 VPW    ✓ISO 9141-2
- ✓ ISO 14230-4(slow)    ✓ISO 14230-4(fast)
- ✓ ISO 15765-4(CAN)    ✓SAE J1939(CAN)    ✓ISO 11898(raw can)
- ✓ Medium Speed CAN(MS-CAN)

## 2. Download & install APP.

- ✓ Torque Lite-<most popular Lite version is free>
- ✓ OBD Auto Doctor-<Excellent Free app, Upgrade to Pro in-app>
- ✓ OBD Fusion-<Excellent 3rd party app>
- ✓ BimmerCode-<download from google play of Android>

Allows you to code the control units in your BMW or mini to unlock hidden features and customize your car to your liking.



**NOTE:**  
vLinker FD+ can support many APP, such as TORQUE Lite/ Pro; OBD Fusion; DashCommand; CAR SCANNER ELM OBD2; Carista OBD2; BimmerCode; BimmerLink; JScan; OBD Auto Doctor; LeafSpy; Dr.Prius; TripiLog; TrackAddict; Harry's LapTimer; FORScan Lite; Garage Pro etc; Many apps may be added to the compatibility list. Product page will be updated accordingly or contact us regarding app compatibility.  
be updated accordingly or contact us regarding app compatibility.

In this manual, we use **FORScan Lite** as representative APP instruction. If use other Apps, please download app on google play.

Recommend:



FORScan for Windows-<Download from www.forscan.org-and for Android -<download from google play>

FORScan is a powerful software scanner for Ford, Mazda, Lincoln and Mercury vehicles, designed to work over OBDII protocols and J2534 Pass-Thru compatible adapters.

## 3. Plug vLinker FD into the OBD port.

The OBDII DLC is usually located under instrument panel (Dash) on the driver's side.

If you want to know more about DLC, please visit: [https://en.wikipedia.org/wiki/Data\\_link\\_connector\\_\(automotive\)](https://en.wikipedia.org/wiki/Data_link_connector_(automotive))



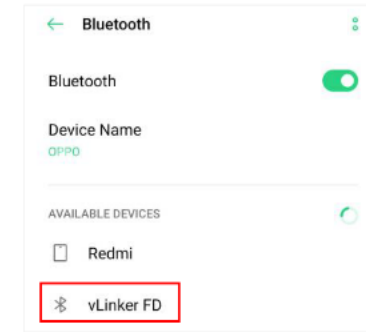
## 4. Turn ignition to Key On Engine Off Position.



"POWER" green LED is turn on, and middle "OBD"red LED blink once, the "BT" blue LED starts to blink twice.  
—LEDs are off? Check vehicle for blown fuses.

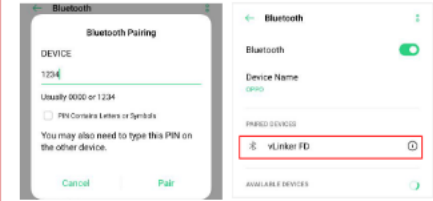
## 5. FORScan Lite Connection Guide for Android(for example)

**Step 1:** Insert the adapter into the OBD interface of the car. Turn ignition to Key On Engine Off Position. Open the Bluetooth settings and wait to search for available devices.

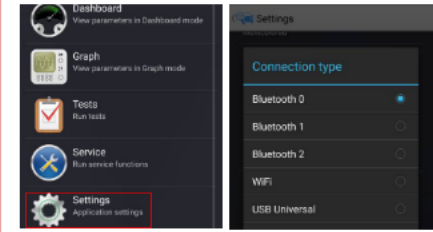


Tap "**vLinker FD**"  
Tap "**scan**" if **vLinker FD** does not show under "**Available Devices**".

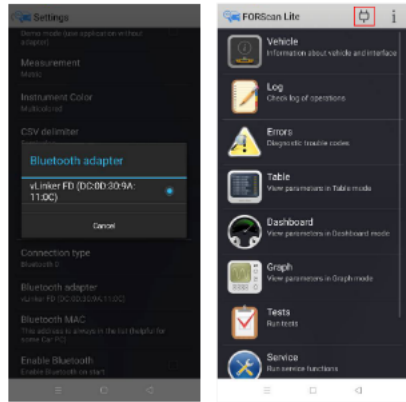
**Step 2:** Enter the pairing code: **1234**  
**Step 3:** Successfully paired "**vLinker FD**".



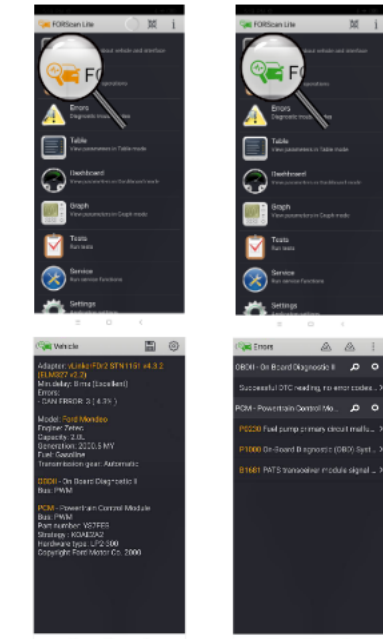
**Step 4:** Open the settings of **FORScan**.  
**Step 5:** Select **Connection type**. "Bluetooth 0 or Bluetooth 1 or Bluetooth 2"



**Step 6:** Select Bluetooth adapter: "**vLinker FD**".  
**Step 7:** Go back and click the button, then adapter's "BT" LED blinking, and the "OBD" red LED blinking in the middle.



## Step 8: Wait for the connection to succeed.



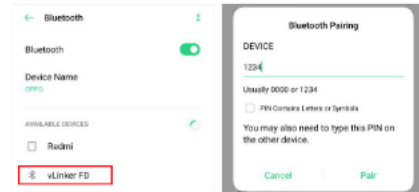
**NOTE:**  
Different OBD II app has different Bluetooth setting steps. Please follow the steps on the app to configure the setting.

## 6. Car Scanner Connection Guide for Android (for example)

**Step 1:** Insert the product into the OBD interface of the car. Turn ignition to Key On Engine Off Position.

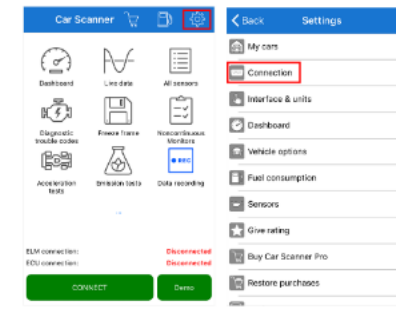
Open the Bluetooth settings. Search for the device name "**vLinker FD**" and click Pair.

**Step 2:** Enter the pairing code: **1234** If the pairing is successful, you can open the APP to set up the connection.



**IMPORTANT NOTE:**  
Different OBD II app has different Bluetooth setting steps. Please follow the steps on the app to configure the setting.

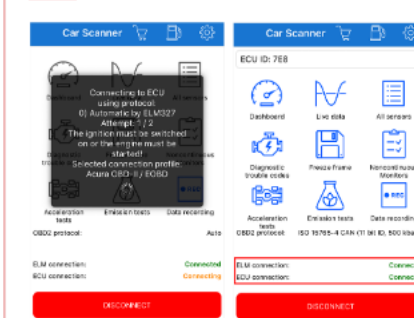
**Step 3:** Open Car Scanner APP, Click  
**Step 4:** Click "**Connection**".



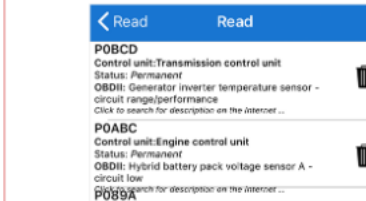
**Step 5:** Select "**Bluetooth**", Device name select "**vLinker FD**".



**Step 6:** Return to the main page and click "**CONNECT**". This may take a few minutes.  
**Step 7:** ELM and ECU are successfully connected.



**Step 8:** If the communication is successful, you can select the control unit you want...



**ATTENTION:**  
The company will not bear any loss if the cars is damaged without any vehicle maintenance during using Car Scanner APP and FORScan APP.

## 7. Configure connectivity setting on the FORScan of Windows.

Please refer to: <http://www.forscan.org>.  
**Attention:** Before using **FORScan** software, connect **vLinker FD** with Windows's own Bluetooth or Bluetooth adapter.

**NOTE:**  
vLinker FD is a product specifically for FORScan applications jointly created by Vgate and FORScan. It can be used on Android and Windows. It is certified and recommended by FORScan. It has faster communication speed, more stable wireless transmission, and more hardware protection than general products on the market. It is a very cost-effective product recommended by FORScan app.

Need Help?  
Please email to us at any time: [sale@vgate.com.cn](mailto:sale@vgate.com.cn)  
We will reply you within 24 hours of the working day.