

Vgate iCar Pro Wi-Fi

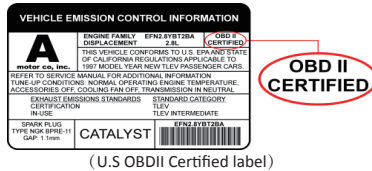


Quick Start Guide iOS & Android

How do I know whether my vehicle is OBDII compliant?

1996 or newer model year vehicle sold in the United States. United States legislation requires all cars and light trucks model year (MY) 1996 and newer to be OBD2 compliant.

2001 or newer model year gasoline vehicle sold in the European Union. 2004 or newer model year diesel vehicle sold in the European Union



What OBDII Protocols does iCar Pro Wi-Fi support?

- ✓ SAE J1850 PWM
- ✓ SAE J1850 VPW
- ✓ ISO 14230-4 KWP
- ✓ ISO 15765-4 CAN
- ✓ ISO 9141-2

What is the best OBDII app works great with iCar Pro Wi-Fi?

We recommend OBD AUTO DOCTOR app. iCar Pro series was well tested with this app. Scan below QR Code to get the free version(in-app upgrade to Pro)



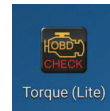
1.1 Download OBD II app and install<iOS>

- ✓ Download 3rd party apps from App store
- ✓ The App developer was tested and recommended iCar Pro Wi-Fi.



- 1. 2 Download OBD II app and install <Android>
- ✓ Torque Lite < Most popular. Lite version is free>

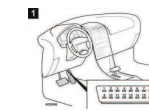
- ✓ OBD Auto Doctor < Excellent Free app, Upgrade to Pro in-app >



2.Plug iCar Pro Wi-Fi adapter to DLC (OBDII Diagnostic Link Connector)

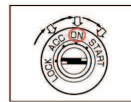
The OBDII DLC is usually located under instrument panel (Dash)on the driver side.

If you want to know more above DLC, Please visit : [https://en.wikipedia.org/wiki/Data_link_connector_\(automotive\)](https://en.wikipedia.org/wiki/Data_link_connector_(automotive)).



3. Turn vehicle ignition to Key On,Engine Off position LED indicator status

- ✓ RED : Power indicator. Light will on
- ✓ GREEN : OBD indicator . Blink once
- ✓ BLUE: Bluetooth indicator . Blink once



Automatically OBD device wake up and Super Power Saving on iCar Pro series

- ✓ Allow the user to leave the iCar Pro in OBD Socket without unplug and plug operation .Supper low power consumption<sleep mode> is low to “2.7 ma” level.

✓ Automatically wake up function to power on iCar Pro every time when you are start with key on engine off (KOE0)position. The device wake up speed is fast to “ms” level . Allow user to start the diagnostic operation more quickly.

Troubleshooting note:

◆ No LED lighting?

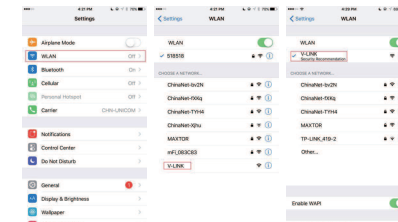
- ✓ Please check blown fuses on the vehicle
- ✓ The adapter is improperly installed. Please remove it from DLC port and plug it again.

4.How to Pair iCar Pro Wi-Fi to your device (use OBD Auto Doctor)

- 4.1 Pair iCar Pro Wi-Fi to iOS device

Step 1:

- ✓ Enable WLAN on your iPhone or iPad
- ✓ Choice V-LINK to connect
- ✓ Connected<V-LINK>

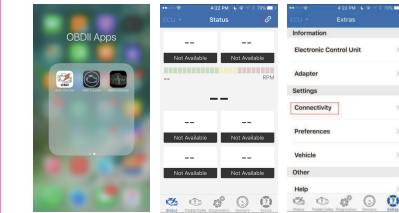


Step 2: Configure connectivity setting on the OBD Auto Doctor

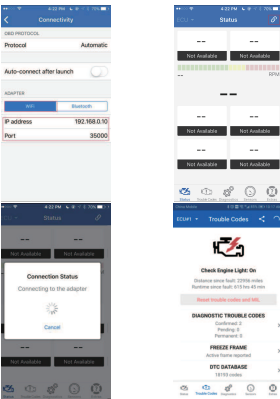
- ✓ Run OBD Auto Doctor app
- ✓ Tap Extras button on the Status page
- ✓ Tap Connectivity in the setting menu to select connection type
- ✓ Select adapter type to Wi-Fi (IP address 192.168.0.10 , Port 35000 is automated. Please don't change it)
- ✓ Back to Status page, Click Start connect

✓ Initial adapter and connecting to vehicle .Bluetooth indicator LED (BLUE)and OBD data indicator (GREEN) keep blinking while system connecting.It will take about 30 seconds to connect

✓ Connected. All LED indicators lights on while sync data from vehicle



IMPORTANT NOTE:
Different OBD II app has different Bluetooth setting steps. Please follow the steps on the app to configure the setting.

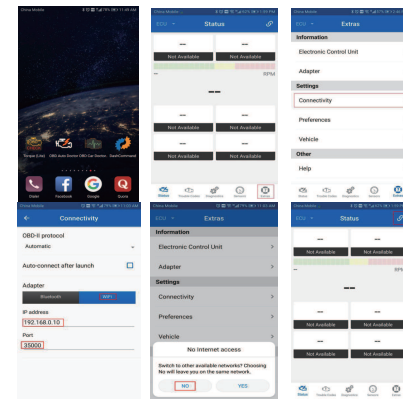
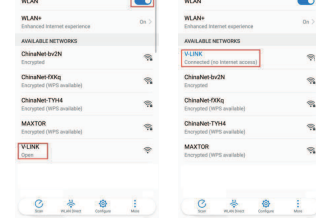


4.2 Pair iCar Pro Wi-Fi to Android device

- Step 1:
 - ✓ Enable Wi-Fi on your Android phone or Pad.
 - ✓ Select Wi-Fi device “ V-LINK ” to pair.
 - ✓ Get Paired
- Step 2: Configure connectivity setting on the OBD Auto Doctor
 - ✓ Run OBD Auto Doctor app
 - ✓ Tap Extras button on status page
 - ✓ Tap Connectivity in the setting menu to select connection type
 - ✓ Select adapter type to Wi-Fi. (IP address 192.168.0.10 , Port 35000 is automated. Please don't change it)
 - ✓ Back to Status page,click to start connect

✓ Initial adapter and connecting to vehicle .Bluetooth indicator LED (BLUE)and OBD data indicator (GREEN) keep blinking while system connecting.It will take about 30 seconds to connect

✓ Connected. All LED indicators lights on while sync data from vehicle



4.What parameters and sensors does iCar Pro Wi-Fi support?

iCar Pro Wi-Fi supports the standard OBD-II parameters (PIDs) as defined in SAE J1979 AUG2014(OBD AUTO DOCTOR app) .The actual list of available parameters is vehicle specific. Your vehicle must have those sensors to work with app.Different OBDII app might support different list of parameters and sensors.
Please refer to : <https://www.obdautodoctor.com/obd-parameters>

Supported Parameters(NOT FULL LIST):

- PID Sensors
- \$01 Monitor status since DTCs Cleared
- \$02 DTC that caused required freeze frame data storage
- \$03 Fuel system status
- \$04 Calculated load value
- \$05 Engine coolant temperature
- \$05,\$08 Short term fuel trim
- \$7,\$9 Long term fuel trim
- \$10 Air flow rate from mass air flow sensor
- \$11 Absolute throttle position
-
- \$0A Fuel pressure
- \$0B Intake manifold absolute pressure
- \$0C Engine RPM
- \$0D Vehicle speed sensor
- \$0E Ignition timing advance for #1 Cylinder
- \$0F Intake air temperature

5. How to read and understand OBD Codes ?

P0123

Throttle Position Sensor/Switch A Circuit High Input

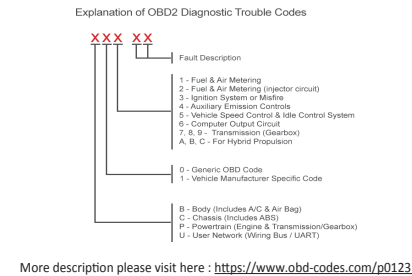
P- Powertrain (Engine&Transmission/Gearbox)

0- Generic OBD Code

1- Fuel & Air metering

2& 3 --Fault description: Throttle Position Sensor(TPS) /Switch A Circuit High Input

(When the PCM sees a voltage that is higher than the normal upper limit, P0123 will set) .User can internet the OBD Code meaning and know the possible causes)



Thank you for your purchase!
If you like Vgate iCar Pro Wi-Fi, please post your review on.

Product Upgrade:

Website: <http://www.vgatemall.com/downloadcenter>
To upgrade the product, please download the upgrade package and user manual of the corresponding model.

