

DATA SHEET

15 FRAME PLUNGER PUMPS

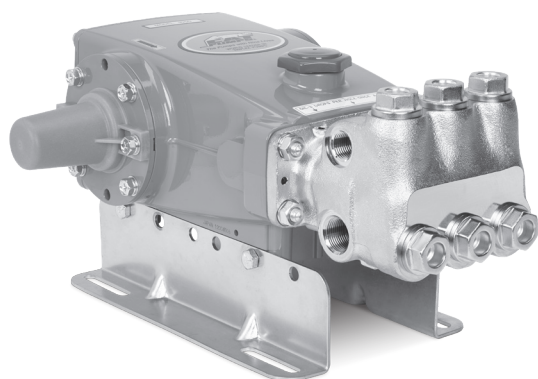


Brass Model: 1050



PIJTERSEN

E-mail : info@pijtersen.nl / info@catpumps.nl
Internet: www.pijtersen.nl / www.catpumps.nl



(Shaft protector included rails sold separately)

FEATURES

- Triplex design delivers high efficiency and low pulsation.
- Pre-set low-pressure seals provide secondary protection against external leaks and require no packing adjustments.
- Belt driven option provides precision flow settings.
- Compact direct-drive with bell housing and flexible coupler assembly. NEMA or IEC electric motor or hydraulic options available.
- Standard NBR seals with alternative options for temperature and chemical compatibility.

COMMON SPECIFICATIONS

	U.S.	Metric
Bore	0.945"	24 mm
Stroke	1.181"	30 mm
Crankcase Capacity	42 oz.	1.26 l
Inlet Ports (2)	¾" NPT(F)	¾" NPT(F)
Discharge Ports (2)	½" NPT(F)	½" NPT(F)
Pulley Mounting	Either Side	Either Side
Shaft Diameter	1.181"	30 mm
Weight	44 lbs.	20 kg
Dimensions	16.28 x 12.99 x 6.45"	414 x 330 x 164 mm

SPECIFICATIONS

	U.S.	Metric
Flow	10 gpm	38 lpm
Pressure Range	100 – 2200 psi	6.9 – 152 bar
Pump RPM*	958 rpm	958 rpm
Inlet Pressure Range	-5 – 60 psi	-0.35 – 4.1 bar
Max. Liquid Temperature (NBR)	160°F	71°C

Alternate seals available for higher temperatures up to 200° F.

ALTERNATE SPECIFICATIONS

	U.S.	Metric
Flow	12.3 gpm	46.6 lpm
Pressure Range	100 – 1800 psi	6.9 – 124 bar
Pump RPM*	1180 rpm	1180 rpm
Inlet Pressure Range	20 – 60 psi	1.4 – 4.1 bar
Max. Liquid Temperature	100° F	38° C

*Pump minimum is 100 RPM.

ALTERNATIVE SEAL CONFIGURATION

MATERIAL	SUFFIX CODE	MAXIMUM TEMPERATURE
NBR	—	160° F (71° C)
FPM	.0110	180° F (82° C)
EPDM	.0220	160° F (71° C)
IPFE	.0770	200° F (93° C)
HT	.3000	180° F (82° C)
STHT	.3400	190° F (88° C)

See **Tech Bulletin 002** for inlet conditions and RPM at high temperature.

DETERMINING THE PUMP R.P.M.

$$\frac{\text{Rated gpm}}{\text{Rated rpm}} = \frac{\text{"Desired" gpm}}{\text{"Desired" rpm}}$$

DETERMINING THE REQUIRED H.P.

$$\frac{\text{HP (Electric Brake)}}{1460} = \frac{\text{gpm x psi}}{1460}$$

DETERMINING MOTOR PULLEY SIZE

$$\frac{\text{Motor Pulley O.D.}}{\text{Pump rpm}} = \frac{\text{Pump Pulley O.D.}}{\text{Motor rpm}}$$

Refer to pump **Service Manual** for repair procedure and additional technical information.

PARTS LIST

ITEM	PN	MATL	DESCRIPTION	QTY
5	126540	STCP R	Screw, HHC Sems (M8 x 20) (See Tech Bulletin 074, 128)	8
8	134805	ALE	Cover, Bearing (See Tech Bulletin 118, 128)	2
9	855043	FBR	Shim, Split, Bearing Cover 2-Piece (See Tech Bulletin 128)	2/4
10	11340	NBR	O-Ring, Bearing Cover – 70D	2
11	43495	NBR	Seal, Oil, Crankshaft	2
12	855044	S	Shim, Split, Bearing Cover 2-Piece (See Tech Bulletin 128)	0/4
15	39060	STL	Bearing, Roller	2
20	48600	TNM	Rod, Connecting Assembly [10/01] (See Tech Bulletin 074)	3
25	43494	FCM	Crankshaft, Dual End (M30)	1
32	43211	ABS	Cap, Oil Filler	1
33	14177	NBR	O-Ring, Filler Cap – 70D	1
37	92241	PC	Gauge, Oil, Bubble with Gasket – 80D (See Tech Bulletin 074)	1
38	44428	NBR	Gasket, Flat, Oil Gauge – 80D	1
40	126541	STCP R	Screw, HHC Sems (M6 x 20) (See Tech Bulletin 074)	4
48	25625	STCP	Plug, Drain (1/4" x 19BSP)	1
49	23170	NBR	O-Ring, Drain Plug – 70D	1
50	133576	ALE	Cover, Rear (See Tech Bulletin 118)	1
51	44834	NBR	O-Ring, Rear Cover – 70D	1
53	134836	ALE	Crankcase with Guide Pins (Includes: 54, 55) (See Tech Bulletin 118, 128)	1
54	27488	S	Pin, Guide	2
55	126545	STCP R	Stud, Manifold (M10 x 45) (See Tech Bulletin 128)	4
56	44664	POP	Pan, Oil	1
64	43507	CM	Pin, Crosshead	3
65	43501	SZZ	Rod, Plunger	3
69	126592	STCP R	Washer, Oil Seal	3
70	43500	NBR	Seal, Oil, Crankcase – 80D	3
75	43506	S	Slinger, Barrier	3
88	45675	S	Washer, Keyhole	3
89	43553	BB	Collar, Spacer	3
90	43552	CC	Plunger (M24 x 77)	3
96	43235	PTFE	Back-up Ring, Plunger Retainer	3
97	17399	NBR	O-Ring, Plunger Retainer – 80D	3
98	45891	CU	Gasket, Plunger Retainer	3
99	104360	S	Retainer, Plunger (M6) (See Tech Bulletin 074)	3
100	855001	POP	Retainer, Seal 2-Piece [07/05] (See Tech Bulletin 098)	3
101	43554	—	Wick, Long Tab	3
106	44035	NBR	Seal, LPS with SS-Spring	3
120	49290	BB	Case, Seal [07/05]	3
121	14762	NBR	O-Ring, Seal Case – 70D	3
126	43558	BB	Adapter, Female	3
127	43559	SNG	V-Packing	6
128	43560	BB	Adapter, Male	3
139	20326	BBCP	Plug, Inlet [3/4" NPT(F)]	1
162	43248	PTFE	Back-up Ring, Valve Seat	6
163	43249	NBR	O-Ring, Seat – 80D	6
164	44718	S	Seat	6
166	43721	S	Valve	6
167	43751	S	Spring, Valve	6
168	44564	PVDF	Retainer, Spring	6
172	17617	NBR	O-Ring, Valve Plug – 90D	6
174	43851	BBCP	Plug, Valve (See Tech Bulletin 074)	6
185	46704	BBCP	Head, Manifold [9/00]	1
192	126231	STCP R	Lockwasher (M10)	4
194	126522	STCP R	Nut, Hex (M10)	4
250	855046	NY	Protector, Shaft with Two Screws (See Tech Bulletin 128)	1

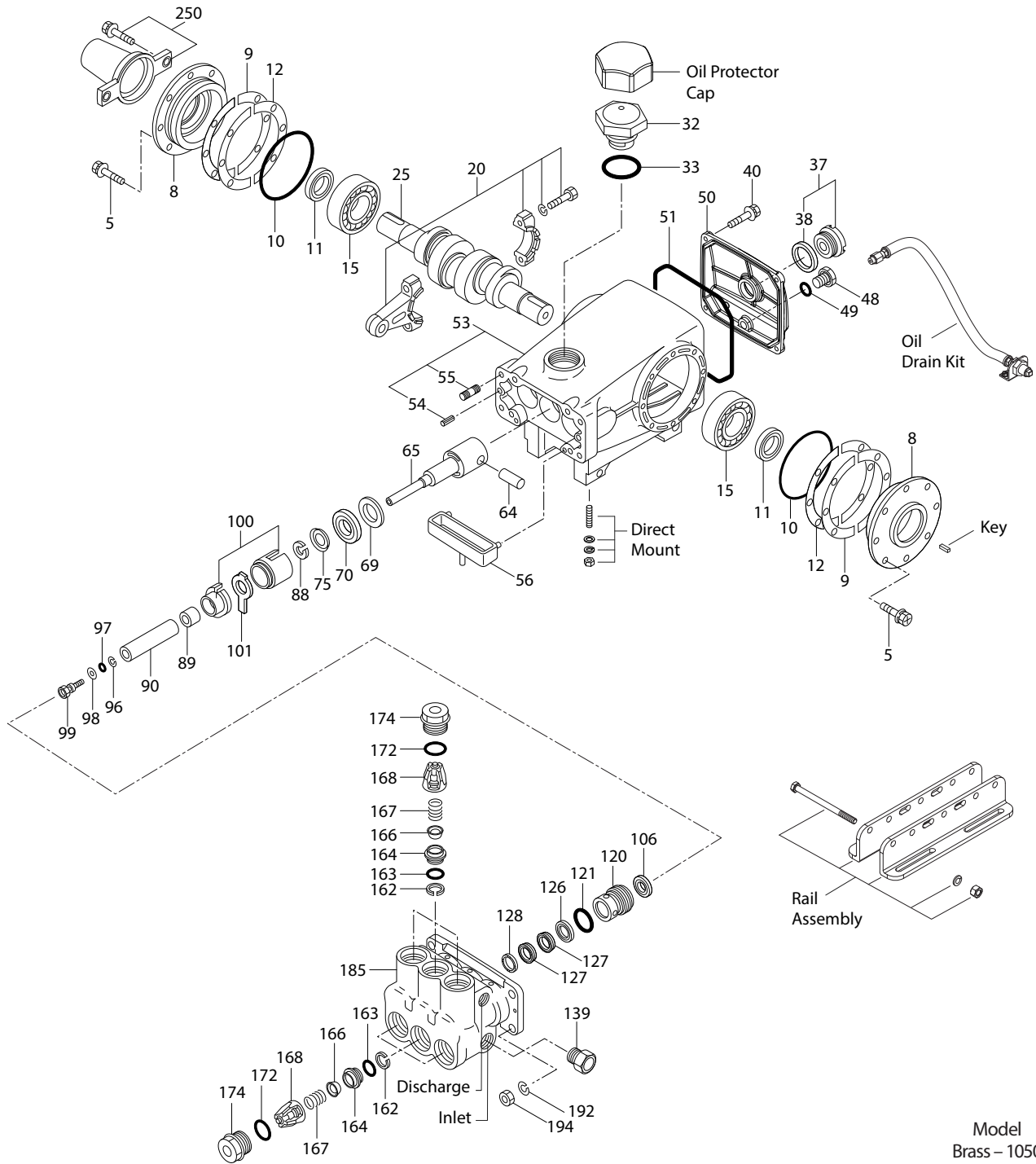
[] Date of latest production change.

R components comply with RoHS Directive.

For additional technical information see www.catpumps.com/literature/tech-bulletins.

MATERIAL CODES (Not Part of Part Number): ABS=ABS Plastic ALE= Aluminum Epoxy BB=Brass BBCP=Brass/Chrome Plated CC=Ceramic
 CM=Chrome-moly CU=Copper FBR=Fiber FCM=Forged Chrome-moly NBR=Medium Nitrile (Buna-N) NY=Nylon PC=Polycarbonate
 PE=Polyethylene POP=Polypropylene PTFE=Pure Polytetrafluoroethylene PVDF=Polyvinylidene Fluoride S=304SS SNG=SpecialBlend (Buna)
 STCP=Steel/Chrome Plated STL=Steel STZP=Steel/Zinc Plated SZZ=304SS/Zamak TNM=Special High Strength

EXPLODED VIEW



Model
Brass – 1050
September 2020

OPTIONAL PARTS AND ACCESSORIES

PART	DESCRIPTION	QTY
30067	Key (M8 x 7.5 x 25)	1
30661	Mount, Assembly (Includes: 30613, 30206, 30059, 30067, 855046)	1
30264	Kit, Direct Mount	1
30613	Assembly, Rail (See Dimensional Drawing)	1
990550	Assembly, Rail for Diesel/Gas (See Dimensional Drawing)	1
76513	Assembly, Rail (See Dimensional Drawing)	1
828710	Protector, Oil Cap with Foam Gasket	1
30059	Hub, "H" 30mm	1
34334	Kit, Oil Drain (3/8" x 24") (See Individual Data Sheet)	1

SERVICE PARTS

PART	DESCRIPTION	QTY
30913	Seal Kit – Standard NBR	1
34920	Valve Kit – Standard NBR	2
6107	Oil, Bottle (21 oz.) ISO 68 Hydraulic	2
6124	Gasket, Liquid (3 oz.)	1
814560	Head, Complete with NBR Seals and O-rings	1
30696	Pliers, Reverse	1
33006	Socket, Seal Case (1/2" Drive)	1

