

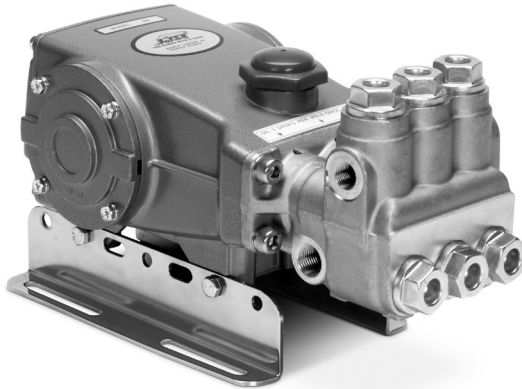
DATA SHEET

7 FRAME PLUNGER PUMPS



Brass Models: 56, 56HS

Gearbox Models: 56G1, 56HSG1, 56G118, 56HSG118



Model 56 Shown
(Rails Sold Separately)

FEATURES

- Industrial triplex design offers reliability and versatility.
- Compact direct-drive mount to motor using bell housing and flexible coupling (Electric - NEMA or IEC, Hydraulic - SAE).
- Gearbox model available with 1" and 1½" hollow shaft to fit a wide variety of engines.
- Pre-Set Lo-Pressure Seals provide secondary protection against external leaks and require no packing adjustment.
- Standard NBR seals with alternative options for temperature and chemical compatibility.

COMMON SPECIFICATIONS

	U.S.	Metric
Inlet Pressure Range	Flooded – 60 psi	Flooded – 4.1 bar
Standard Liquid Temp. (NBR)	160° F	71° C
Alternative seals available for high temp up to 190° F		
Bore	0.709"	18 mm
Crankcase Capacity	25 oz.	0.74 l
Inlet Ports (2)	½" NPT(F)	½" NPT (F)
Discharge Ports (2)	¾" NPT (F)	¾" NPT (F)
Shaft Diameter	0.945"	24 mm
Weight	29.25 lbs.	13.3 kg
Weight w/Gearbox	36.8 lbs.	16.7 kg
Dimensions (pump only)	13.94 x 8.19 x 6.42"	354 x 208 x 163 mm
Dimensions (w/gearbox)	13.94 x 10.83 x 6.42"	354 x 275 x 163 mm

SPECIFICATIONS	U.S. Measure	Metric Measure
Model 56		
Flow	5.5 gpm	20.8 lpm
Pressure Range	100 – 3500 psi	6.9 – 241 bar
Pump RPM*	1210 rpm	1210 rpm
Stroke	0.945"	24 mm
Model 56 Alternate		
Flow	8.0 gpm	30.3 lpm
Pressure Range	100 – 2500 psi	6.9 – 172 bar
Pump RPM*	1760 rpm	1760 rpm
Stroke	0.945"	24 mm
Gearbox Models 56G1, 56G118		
Flow	8.0 gpm	19 lpm
Pressure Range	100 – 2500 psi	6.9 – 172 bar
Engine RPM	3600 rpm	3600 rpm
Stroke	0.945"	24 mm
Model 56HS		
Flow	8.0 gpm	30.3 lpm
Pressure Range	100 – 3000 psi	6.9 – 207 bar
Pump RPM*	1760 rpm	1760 rpm
Stroke	0.945"	24 mm
Gearbox Model 56HSG1, 56HSG118		
Flow	8.0 gpm	30.3 lpm
Pressure Range	100 – 3000 psi	6.9 – 207 bar
Engine RPM	3600 rpm	3600 rpm
Stroke	0.945"	24 mm

*Pump minimum is 100 rpm.



PIJTTERSEN

E-mail : info@pijttersen.nl / info@catpumps.nl
Internet: www.pijttersen.nl / www.catpumps.nl

ALTERNATIVE SEAL CONFIGURATION

MATERIAL	SUFFIX CODE	MAXIMUM TEMPERATURE
NBR	—	160° F (71° C)
FPM	.0110	180° F (82° C)
EPDM	.0220	160° F (71° C)
HT	.3000	180° F (82° C)
STHT	.3400	190° F (88° C)

See Reference Document 99TCH002 for inlet conditions and RPM at high temperature.

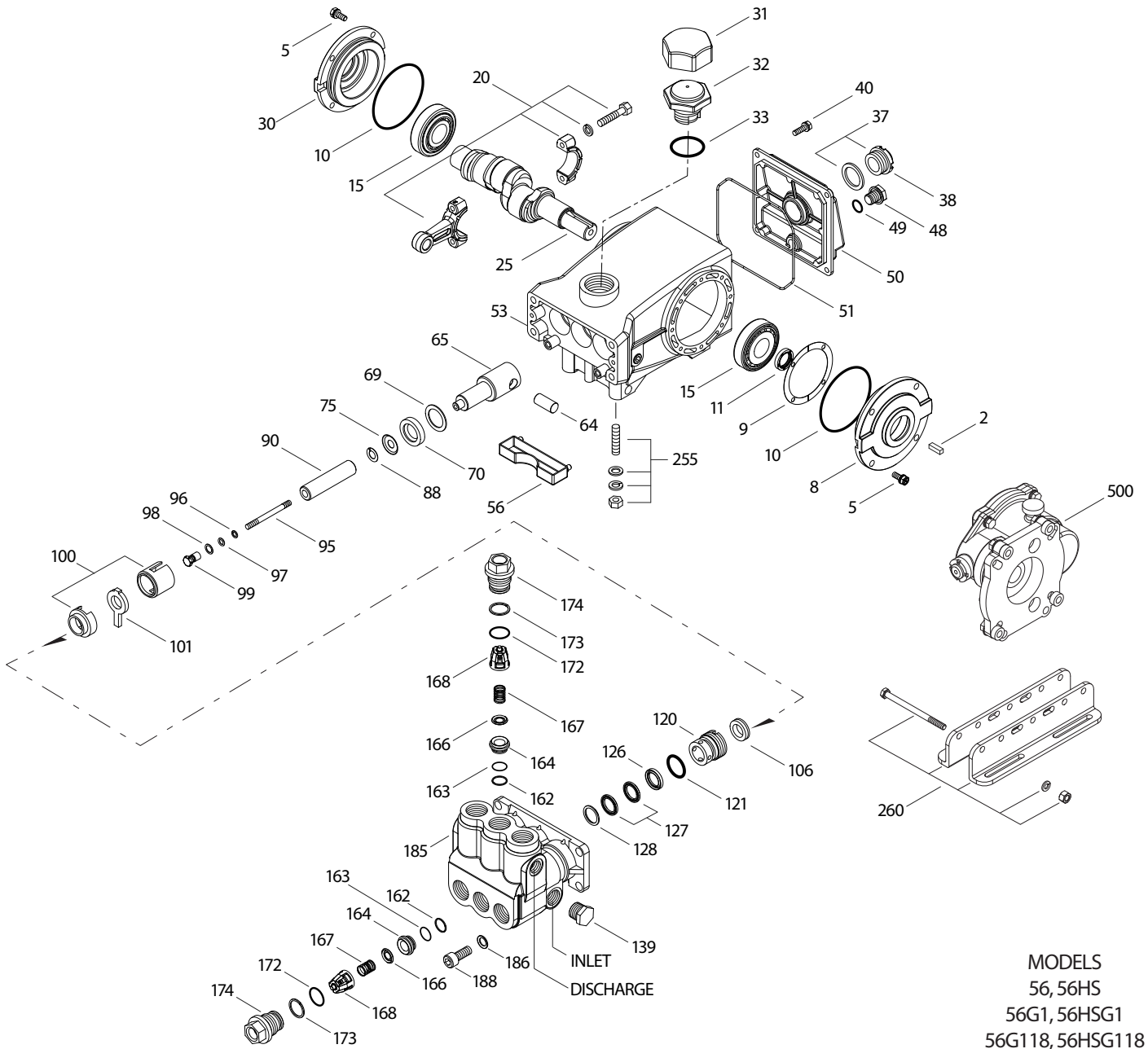
DETERMINING THE PUMP R.P.M.	Rated gpm	=	"Desired" gpm
	Rated rpm	=	"Desired" rpm
DETERMINING THE REQUIRED H.P.	Hp (Electric Brake)	=	gpm x psi 1460
DETERMINING MOTOR PULLEY SIZE	Motor Pulley O.D. Pump rpm	=	Pump Pulley O.D. Motor rpm

Refer to pump **Service Manual** for repair procedure and additional technical information.

PARTS LIST

ITEM	PART NUMBER		DESCRIPTION		QTY	
	56/56G1/ 56G118	MATL	56HS 56HSG1 56HSG118	MATL		
2	30067	STL	30067	STL	Key (M8x7.5x25)	1
5	125824	STCP R	125824	STCP R	Screw, HHC Sems (M6x16)	8
8	133571	ALE	133571	ALE	Cover, Bearing (See Tech Bulletin 118, 123)	1
9	815280	FBR	815280	FBR	Shim, Split, 2-Pc	1
10	12393	NBR	12393	NBR	O-Ring, Bearing Cover	2/1
11	43222	NBR	43222	NBR	Seal, Oil Crankshaft	1/0
15	43221	STL	43221	STL	Bearing, Roller	2
20	48863	TNM	48863	TNM	Rod, Connecting [6/02]	3
25	43464	FCM	43464	FCM	Crankshaft, Single End	1
30	133572	ALE	133572	ALE	Cover, Bearing, Blind (See Tech Bulletin 118, 123)	1
31	828710	PE	828710	PE	Protector, Oil Cap w/Foam Gasket	1
32	44666	RTP	44666	RTP	Cap, Oil Filler, Domed-Gearbox Models	1
33	14177	NBR	14177	NBR	O-Ring, Oil Filler Cap - 70D	1
37	92241	PC	92241	PC	Gauge, Oil Bubble w/Gasket - 80D	1
38	44428	NBR	44428	NBR	Gasket, Flat Flex, Oil Gauge - 80D	1
40	126541	STCP R	126541	STCP R	Screw, HHC Sems (M6x20)	4
48	25625	STCP	25625	STCP	Plug, Drain (1/4"x19BSP)	1
49	23170	NBR	23170	NBR	O-Ring, Drain Plug - 70D	1
50	133569	ALE	133569	ALE	Cover, Rear (See Tech Bulletin 118, 123)	1
51	14047	NBR	14047	NBR	O-Ring, Rear Cover (See Tech Bulletin 106)	1
53	133593	ALE	133593	ALE	Crankcase (See Tech Bulletin 118, 123)	1
56	43240	POP	43240	POP	Pan, Oil	1
64	43237	CM	43237	CM	Pin, Crosshead	3
65	48913	SHS	49892	SBZ	Rod, Plunger	3
69	126589	STCP R	126589	STCP R	Washer, Oil Seal	3
70	43228	NBR	43228	NBR	Seal, Oil, Crankcase	3
75	43328	S	43328	S	Slinger, Barrier	3
88	45697	S	45697	S	Washer, Keyhole (M18 x M10)	3
90	43232	CC	43232	CC	Plunger (M18x77)	3
95	126559	STCP R	126559	STCP R	Stud, Plunger Retainer (M6x70)	3
96	43235	PTFE	43235	PTFE	Back-up-Ring, Plunger Retainer	3
97	17399	NBR	17399	NBR	O-Ring, Plunger Retainer - 80D	3
	14160	FPM	14160	FPM	O-Ring, Plunger Retainer - 80D	3
98	45891	CU	45891	CU	Gasket, Plunger Retainer	3
99	46504	S	46504	S	Retainer, Plunger (M6)	3
100	45689	PVDF	45689	PVDF	Retainer, Seal, 2pc (See Tech Bulletin 105)	3
101	43239	FBR	43239	FBR	Wick, Long Tab	3
106	43243	NBR	43243	NBR	Seal, LPS w/S-Spg	3
	44926	FPM	44926	FPM	Seal, LPS w/SS-Spg	3
	76243	ST2	76243	ST2	Seal, LPS w/S-Spg	3
120	45685	BB	45685	BB	Case, Seal	3
121	20285	NBR	20285	NBR	O-Ring, Seal Case - 70D	3
	11693	FPM	11693	FPM	O-Ring, Seal Case	3
126	44550	BB	44550	BB	Adapter, Female	3
127	44549	SNG	44549	SNG	V-Packing	6
	45617	SFG	45617	SFG	V-Packing	6
	48300	STG	48300	STG	V-Packing	6
128	45618	BB	45618	BB	Adapter, Male	3
139	43448	BB	43448	BB	Plug, Inlet, [1/2" NPT(M)]	1
162	43248	PTFE	43248	PTFE	Back-up-Ring, Seat	6
163	43249	NBR	43249	NBR	O-Ring, Seat - 80D	6
	44383	FPM	44383	FPM	O-Ring, Seat - 70D	6
164	43722	S	43722	S	Seat	6
166	43721	S	43721	S	Valve	6
167	43751	S	43751	S	Spring	6
168	44564	PVDF	44564	PVDF	Retainer, Spring	6
172	14179	NBR	14179	NBR	O-Ring, Valve Plug - 70D	6
	15855	FPM	15855	FPM	O-Ring, Valve Plug - 70D	6
173	20213	PTFE	20213	PTFE	Back-up-Ring, Valve Plug	6
174	45939	BB	45939	BB	Plug, Valve, Extended	6
185	45937	FBB	45937	FBB	Head, Manifold	1
186	49680	S	49680	S	Washer, Spring (M10)	4
188	49679	S	49679	S	Screw, HSH (M10x35)	4
255	30243	STZP	30243	STZP	Kit, Direct Mount	1
260	30611	STZP R	30611	STZP R	Assy, Angle Rail, B (2.09" x 9.45")	1
	30645	STZP R	30645	STZP R	Assy, Angle Rail, A (2.95" x 11.81")	1
	76513	STZP R	76513	STZP R	Assy, Angle Rail	1
299	814618	FBB	814618	FBB	Head, Complete w/NBR Seals and O-Rings	1

EXPLODED VIEW



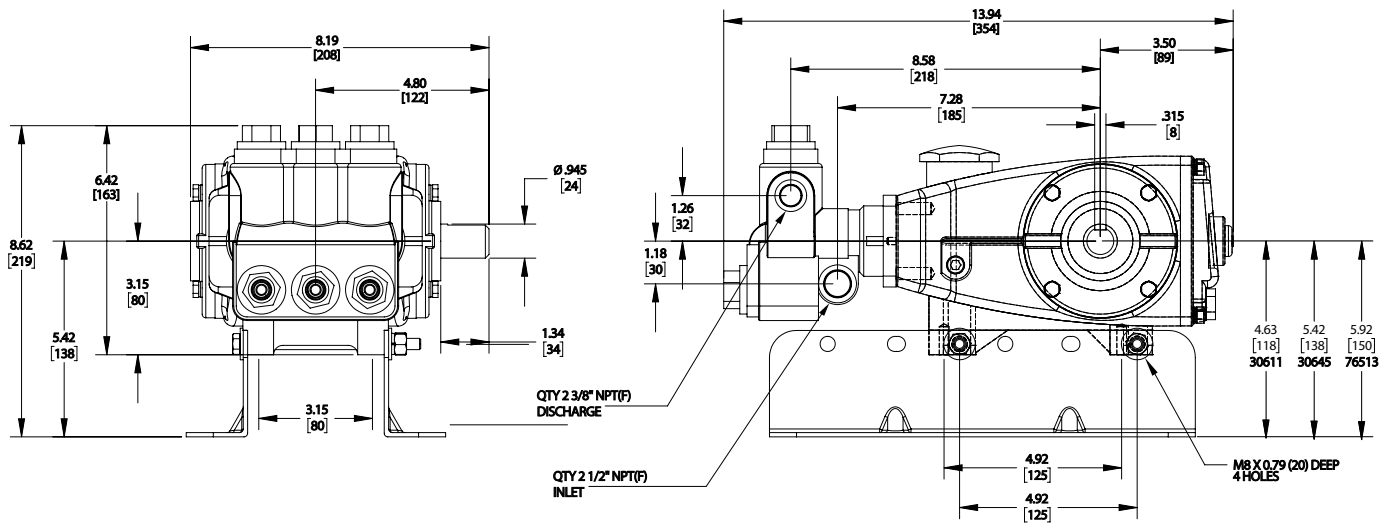
MODELS
56, 56HS
56G1, 56HSG1
56G118, 56HSG118
April 2020

ITEM	PART NUMBER		DESCRIPTION		QTY	
	MATL	56HS 56HSG1 56HSG118	MATL			
300	30799	NBR	30799	NBR	Kit, Seal (Incls: 97,101,106,121,127) – Standard	1
	34237	FPM	34237	FPM	Kit, Seal (Incls: 97,101,106,121,127) – .0110	1
	76799	HT	76799	HT	Kit, Seal, "High Temp" (Incls: 97,101,106,121,127) – .3000	1
	76826	STHT	76826	STHT	Kit, Seal, (Incls: 97,101,106,121,127) – .3400	1
310	33820	NBR	33820	NBR	Kit, Valve (Incls: 162-168,172,173) – Standard, .3000, .3400	2
	34238	FPM	34238	FPM	Kit, Valve (Incls: 162-168,172,173) – .0110	2
500	8071	—	8071	—	Gearbox-1" Shaft (See individual Data Sheet) – 56G1, 56HSG1	1
	8078	—	8078	—	Gearbox-1-1/8" Shaft (See individual Data Sheet) – 56G118, 56HSG118	1
—	6107	—	6107	—	Oil, Bottle (21 oz.) ISO 68 Hydraulic (Fill to specified crankcase capacity prior to start-up)	1-2

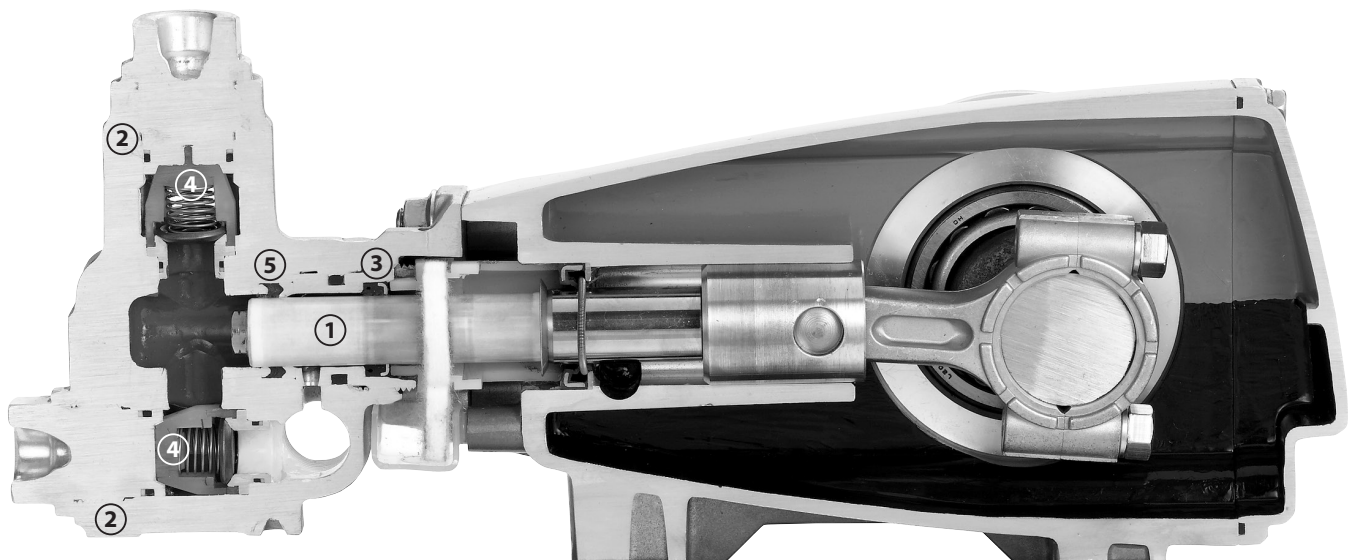
Bold print part numbers are unique to a particular pump model. Italics are optional items. [] Date of latest production change.

R Components comply with RoHS Directive. For additional technical information see www.catpumps.com/literature/tech-bulletins.

MATERIAL CODES (Not Part of Part Number): ALE=Aluminum Epoxy BB=Brass CC=Ceramic CM=Chrome-Moly CU=Copper FBB=Forged Brass
FBR=Fiber FCM=Forged Chrome-Moly FPM=Fluorocarbon HT=High Temp NBR=Medium Nitrile (Buna-N) PE=Polyethylene POP=Polypropylene
PC=Poly Carbonate PTFE=Pure Polytetrafluoroethylene PVDF=Polyvinylidene Fluoride RTP=Reinforced Composite S=304SS SBZ=304SS/Bronze
SFG=Special Blend FPM SHS=304SS/High Strength SNG=Special Blend (Buna) STCP=Steel/Chrome Plated STG=Special Blend PTFE White
STHT=Special PTFE High Temp STL=Steel STZP=Steel/Zinc Plated TNM=Special High Strength



Models 56, 56HS



- 1 Special concentric, high density, polished, solid ceramic plungers provide a true wear surface and extended seal life.
- 2 Manifolds are a high tensile strength bronze for long term, continuous duty and corrosion resistance.
- 3 100% wet seal design adds to service life by allowing pumped liquids to cool and lubricate on both sides.
- 4 Stainless steel valves, seats and springs provide corrosion-resistance, ultimate seating and extended life.
- 5 Specially formulated, Cat Pump exclusive, V-Packing offer unmatched performance and seal life.



PIJTTERSEN

Pijtersen B.V.
Beneluxweg 33
9636 HV Zuidbroek
Tel.: +31(0)50-8200963

KvK 01013855
BIC RABONL2U
BTW NL002166811B01
IBAN NL24 RABO 0353 2970 97



The Pumps with Nine Lives

www.pijtersen.nl - info@pijtersen.nl | www.catpumps.nl - info@catpumps.nl