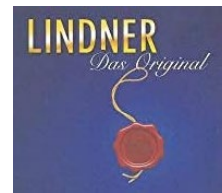
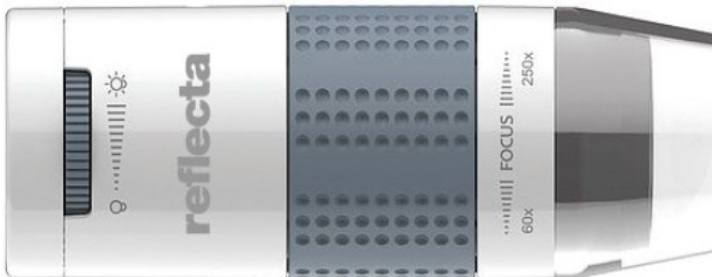


Digital Microscope with LED, Manual

LI-S66144



reflecta



Specification

Connection type USB 2.0

Effective magnifications (on a 17" screen) 60x, 250x

Effective display area 5.6 x 4.2 mm (60x), 1.4 x 1.1 mm (250x),

Lighting Four LED lights

Power supply 5V 250mA (via USB)

CMOS sensor

Maximum resolution snapshot 1600 x 1200 pixels (UXGA)

Maximum video recording resolution 640 x 480 pixels (VGA)

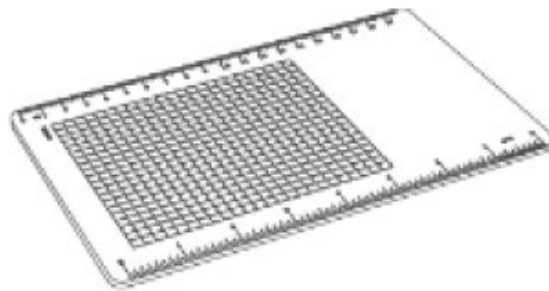
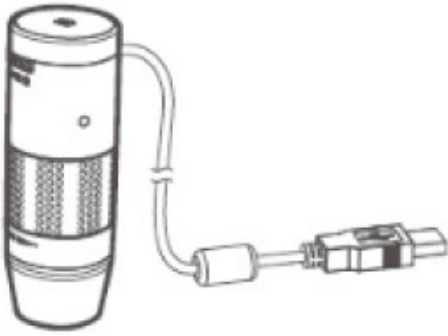
Dimensions Φ 30 x 86 mm Weight 207 grams

Net weight of product: 250 g

Index

1. Specifications
2. Table of contents
3. Package Contents
Tips and warnings
4. Features and Components
Assembly
5. Software installation XPLOVIEUW Windows
Software installation XPLOVIEUW MAC OS
6. Setting software
Focus
7. Magnification 60x
8. Magnification 250x
9. Lighting
10. Recording
Icons and statements
11. Full-screen display
Rotate/mirror image
12. System Settings
No display image
Timer recording
13. Video recording
Setting storage location
Language
Advanced Settings Windows
14. Advanced settings MAC OS

Content

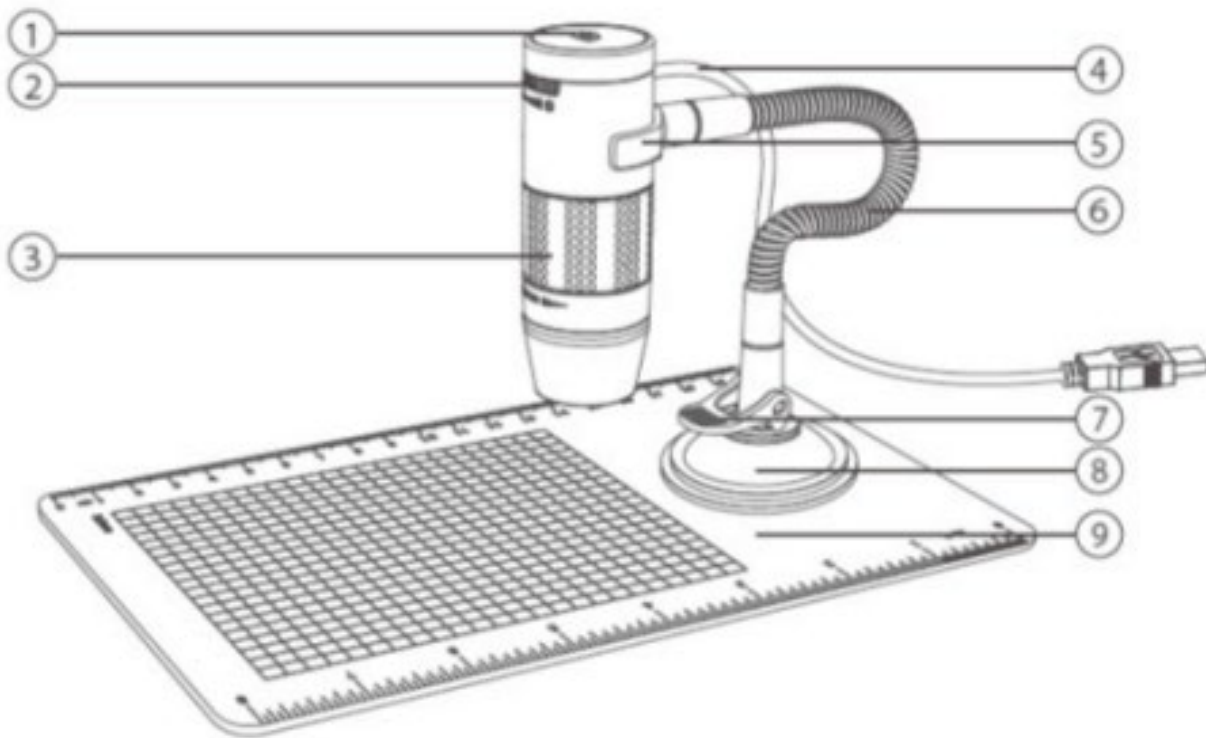


USB Microscope
Holder with suction cup
Gridded footplate
Installation CD
Directions for use

Tips and warnings

1. Do not use the LCD digital microscope in environments where such devices are prohibited, improper use may result in serious accidents.
2. Protect the LCD digital microscope from water and other liquids. Do not use the LCD digital microscope with wet hands. Never use the LCD digital microscope in the rain or snow. Moisture can cause fire and electric shock. If you notice smoke or odors coming from your LCD digital microscope, turn it off immediately. Turn it off immediately.
3. The LCD digital microscope may become slightly warm during use. This is not a malfunction.
4. Wipe the LCD digital microscope with a soft, dry cloth.

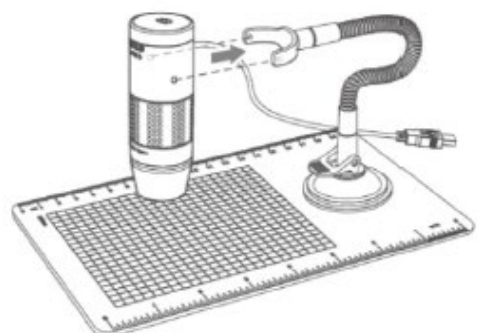
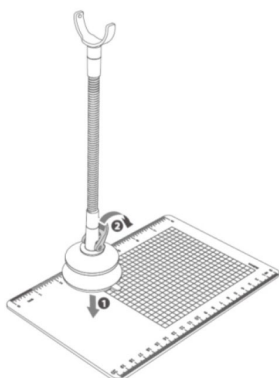
Function - Parts



1. Record button
2. Light intensity button
3. Focus
4. USB connection cable
5. Support bracket
6. Flexible support
7. Locking siphon
8. Observation plate

Assembly

Mount the microscope with base on the base plate



Software installation XPLOVIEUW Windows

- Insert the supplied CD into the computer's CD-ROM.
- Double-click the xploview v3.2.xx.exe < > icon on the CD.
- Follow the xploview installation wizard to install the application software for the digital microscope.

Software installation XPLOVIEUW MAC OS

- Insert the supplied CD into the computer's CD-ROM.
- Double-click the xploview v3.2.xx.dmg < > icon on the CD.
- Drag the xploview < > icon to the Applications folder.

The Digital Microscope is a free Driver Product, it can be used directly after connecting to computer with operating system above win2000 version.

Setting software

Connect the device to the computer with the supplied USB cable.

Starting the xploview software On Windows-based PC

The xploview software can be launched by double-clicking the < > icon from the desktop, or from the start menu.

Mac OS-based PC The xploview software can be launched by double-clicking the < > icon from the Applications folder.

Note

When the device is connected to the computer for the first time, Windows or Mac OS will automatically install a driver. This process may take several minutes. Each time the xploview software is started the device will automatically start up. Otherwise, the device can be selected from the device settings section of the system settings menu. It is normal that the LED will flash when the device is connected. When xploview is run, the LID will automatically turn on again.



Focus



Turn the focus ring as far to the right as possible.

Magnification 60x

Place the microscope directly over an object. From the preparation position, turn the focus knob (3) counterclockwise until the first focal point is reached where the image is sharp and clear. The magnification of 60x can be viewed on a monitor.



Magnification 250x

From 60x magnification, turn the focus knob (3) further counterclockwise until the second focal point is reached at which the image is sharp and clear. The magnification of 250x can be viewed on a monitor.



Lighting

To adjust the LED light intensity, turn the knob (2) clockwise to increase your light intensity.

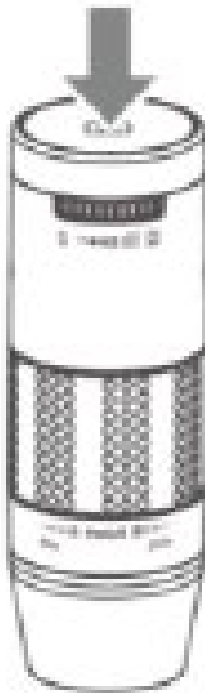


Turn the knob (2) to the left to decrease your light intensity.



Recording

The record button (1) is touch-sensitive. Tap the record button at the top of the device to record.



Icons and statements



Open the system settings menu



Take a (snapshot) of the screen.



To stop and start a timed (interval) recording.



To start and stop a video recording



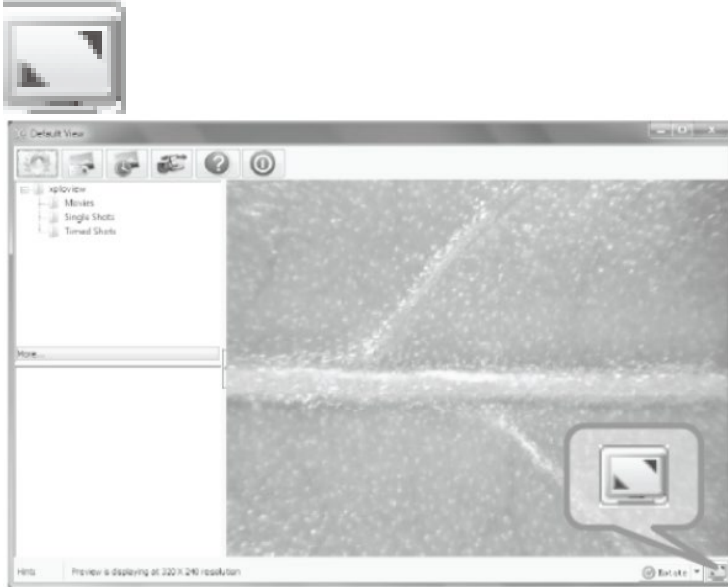
Information from the software.



Exit software.

Full-screen display

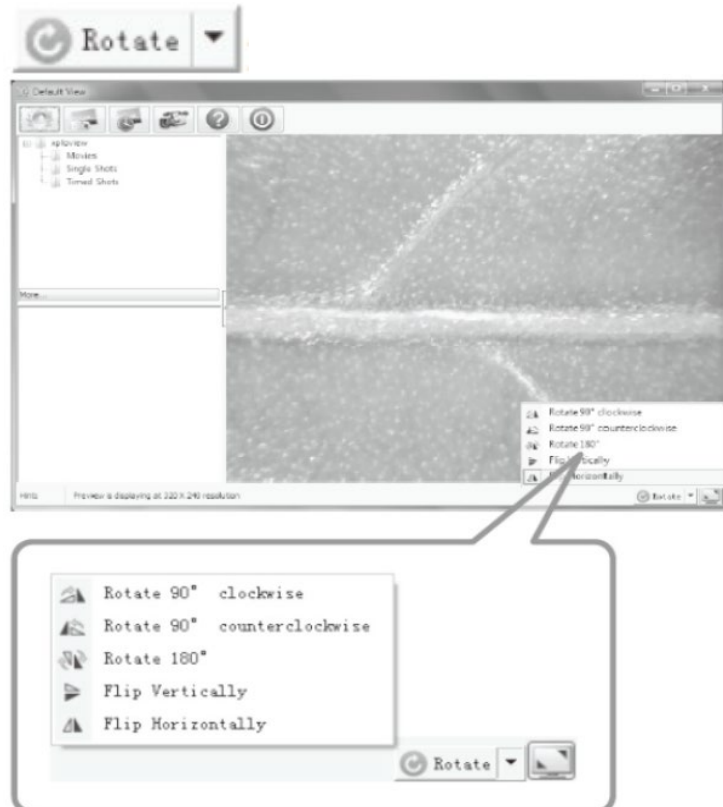
To activate full-screen mode, click on the icon on the lower right side of the screen in the software



To exit full-screen mode again, double-click the screen or press the Esc button on the keyboard.

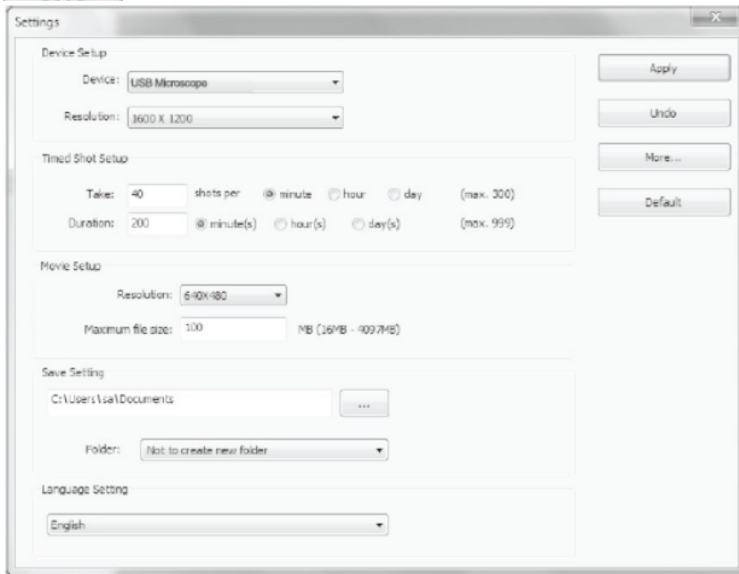
Rotate/mirror image

To activate the rotate/mirror mode, click on the bottom right of the screen in the software on the icon



System Settings

The first that the software xploview is started the default settings will be loaded. You can change these settings manually in the Settings menu



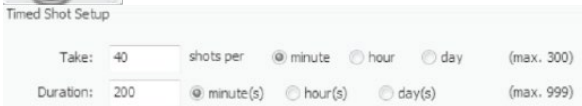
No display image

If the image created by the microscope is not displayed by default, you can change it by selecting it from the Device Setup > Resolution drop-down menu.



Timer recording

The frequency and duration of automatic image capture can be adjusted via the menu below.



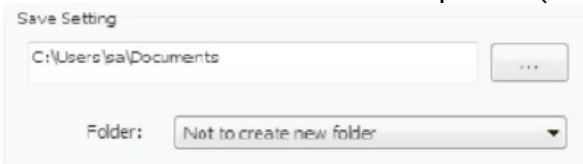
Video recording

The resolution of the video recordings you make can be adjusted in the Resolution menu. You can also adjust the maximum file size of each video.



Storage location settings

The default location for recorded photos (images) and videos can be changed in the menu below.



Language

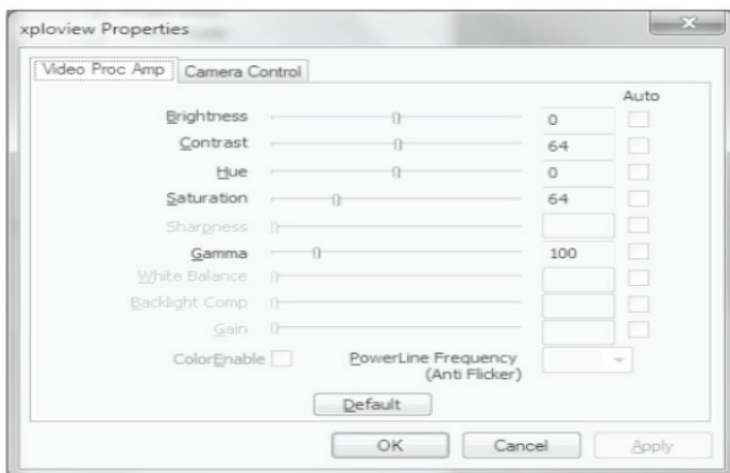
The language of xpliview software can be changed in the menu below.



Advanced Settings Windows

By clicking on More.... On the right side of the system settings menu, you can manually adjust all image settings.

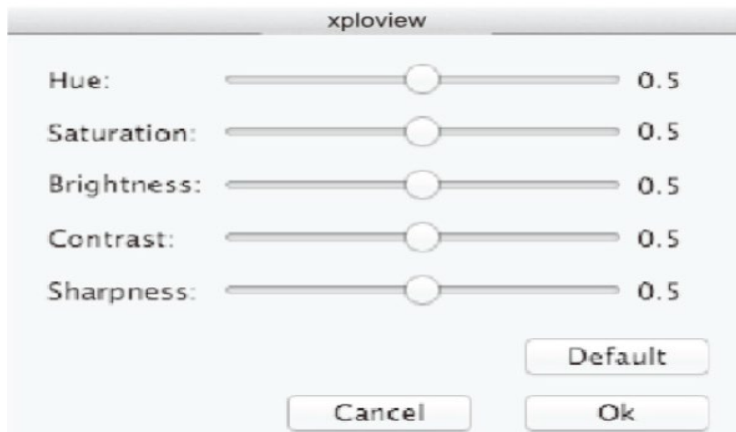
Windows



Advanced Settings Mac OS

By clicking on More.... On the right side of the system settings menu, you can manually adjust all image settings.

Mac OS



Your supplier

