

MBC Guttin

The Expert of Winding and Unwinding



Manual safety chucks

PRESENTATION

French manufacturer of safety chucks, expandable airshafts, brakes and spreading equipment.

Several patents ensure quality and know-how our company.

Specific products



Pneumatic safety chucks



Self-centring pneumatic safety chuck

SIMPLIFIED MAINTENANCE :

- Interchangeability of wear parts within few minutes (**from the front face**)
- 100% Steel manufacturing (**easier to meet specific requirements**)
- Safety chucks with riveted bellows (in accordance with European norms)
- Changing the bladder in few minutes



Assembling



Expandible Material and spare parts

SECTORS OF ACTIVITIES



Spreading equipment



Spreading

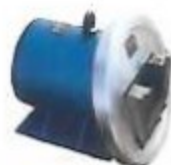


Others

ZI de Charancieu - 38490 CHARANCIEU
Tél : + 33 (0) 4 76 32 07 62 - Fax : + 33 (0) 4 76 32 29 56
www.guttin.com - guttinmbc@aliceadsl.fr

MANUAL SAFETY CHUCKS

Manual safety chucks with pivoting disc



Manual safety chucks with sliding disc




Manual safety chucks with axial adjustment



DEFINITION :

- Foot-mounted (Serie 150) or flange-mounted (Serie 250)
- Without shaft end (SFE) or with shaft end (SFE/G)
- With several wear parts :
 - **Type A** Square
 - **Type B** Triangular
 - **Type E** Square 45°
 - **Type V** Double geometry (ensures translation without guiding plates)
 - **Type W** Double geometry (needs guiding plates for translation)

TYPE	ROLL WEIGHT	TORQUE	DIMENSIONS
14-20	150 kg	40 Nm	14 à 20
18-25	400 kg	120 Nm	18 à 25
20-30	800 kg	185 Nm	20 à 30
30-40	1600 kg	350 Nm	30 à 40
40-50	2850 kg	1100 Nm	40 à 50
50-80	7200 kg	2350 Nm	50 à 80
80-120	11 500 kg	9 000 Nm	80 à 120
120-180	22 000 kg	20 000 Nm	120 à 180
180-230	60 000 kg	40 000 Nm	180 à 230



**Safety chucks
with axial adjustment
Serie 1150 –1250**

SHAFT ENDS



Others on request

ASSEMBLING TYPES



Without wear parts -
with guiding plates



With wear parts and
guiding plates



With wear parts
double geometry type V

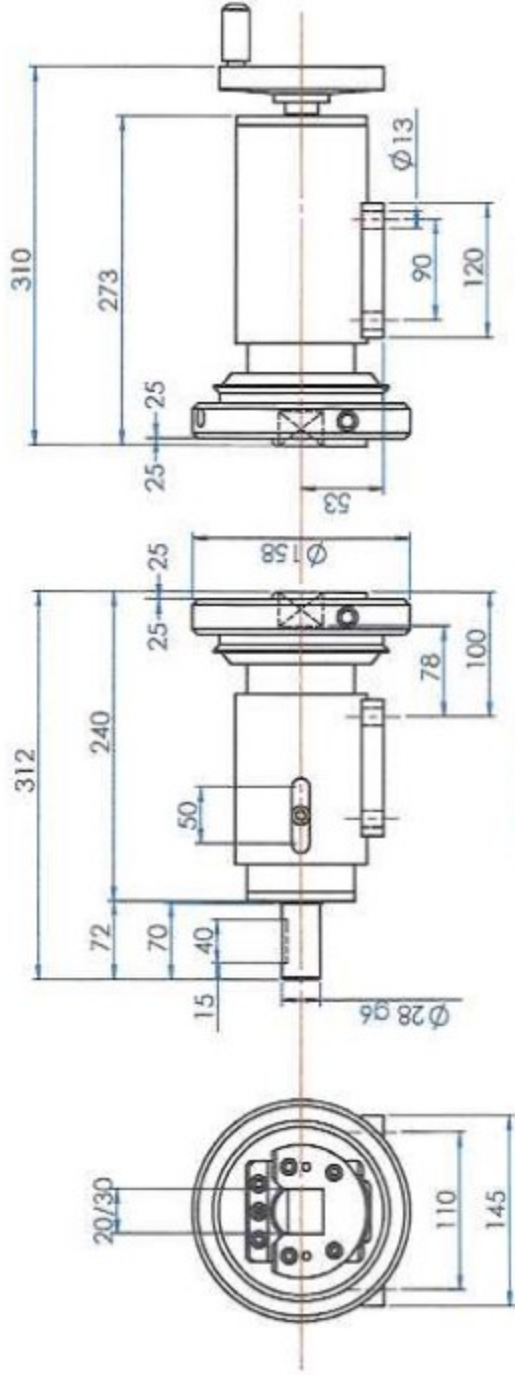
**SAFETY CHUCK with
AXIAL ADJUSTMENT** *MBC
Guttin*

Available: - With 50 mm stroke

- With 100 mm stroke

- With fix shaft





SFE/G

SFE



**SAFETY CHUCK SERIE 1150 20/30
STROKE 50**

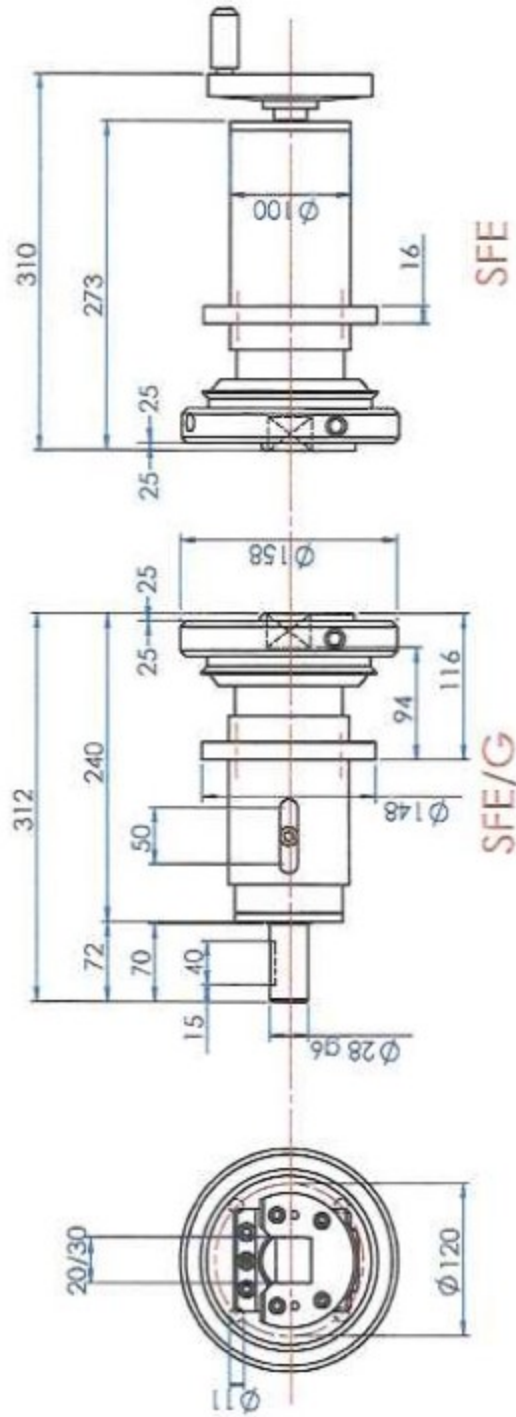
*MBC
Guttin*

Square : 20 to 30 depth 22

Rollweight : 5600 N

Torque : 185 Nm





SAFETY CHUCK SERIE 1250 20/30
STROKE 50

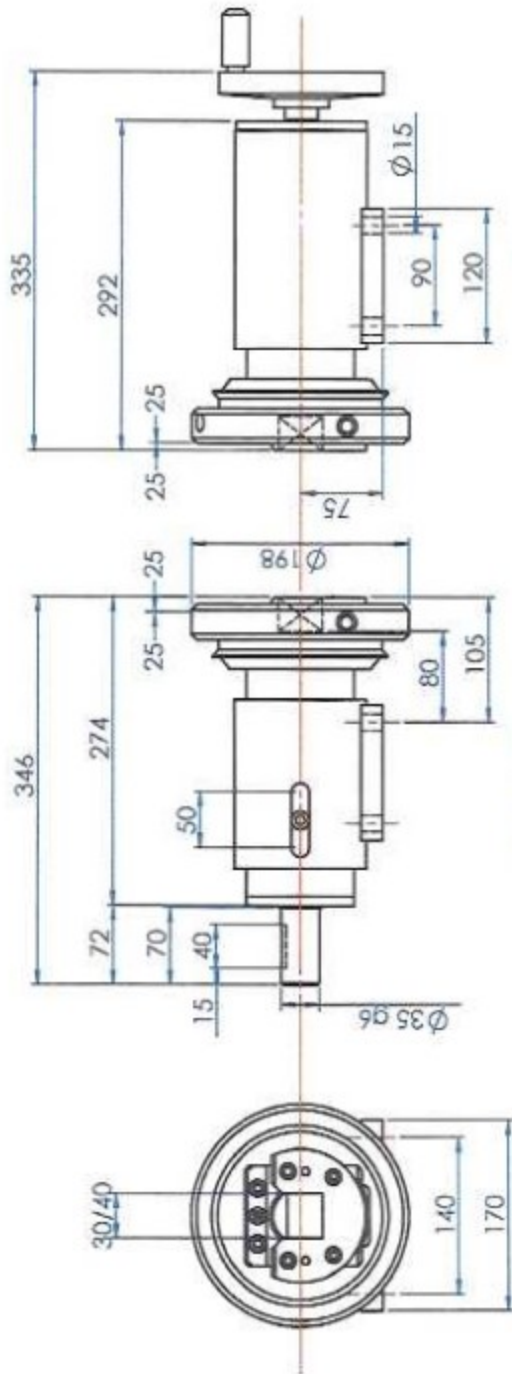
MBC
Guttin

Square : 20 to 30 depth 27

Rollweight : 5600 N

Torque : 185 Nm





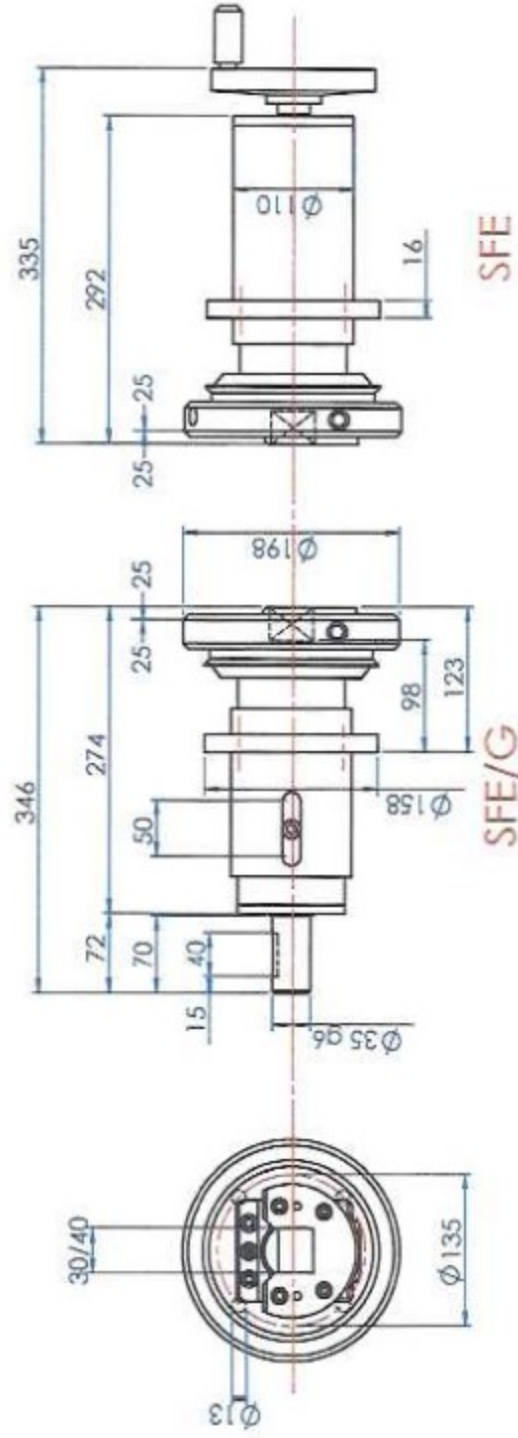
SFE/G

SFE



SAFETY CHUCK SERIE 1150 30/40
STROKE 50
 Square : 30 to 40 depth 25
 Rollweight : 11000 N
 Torque : 350 Nm





SAFETY CHUCK SERIE 1250 30/40
STROKE 50

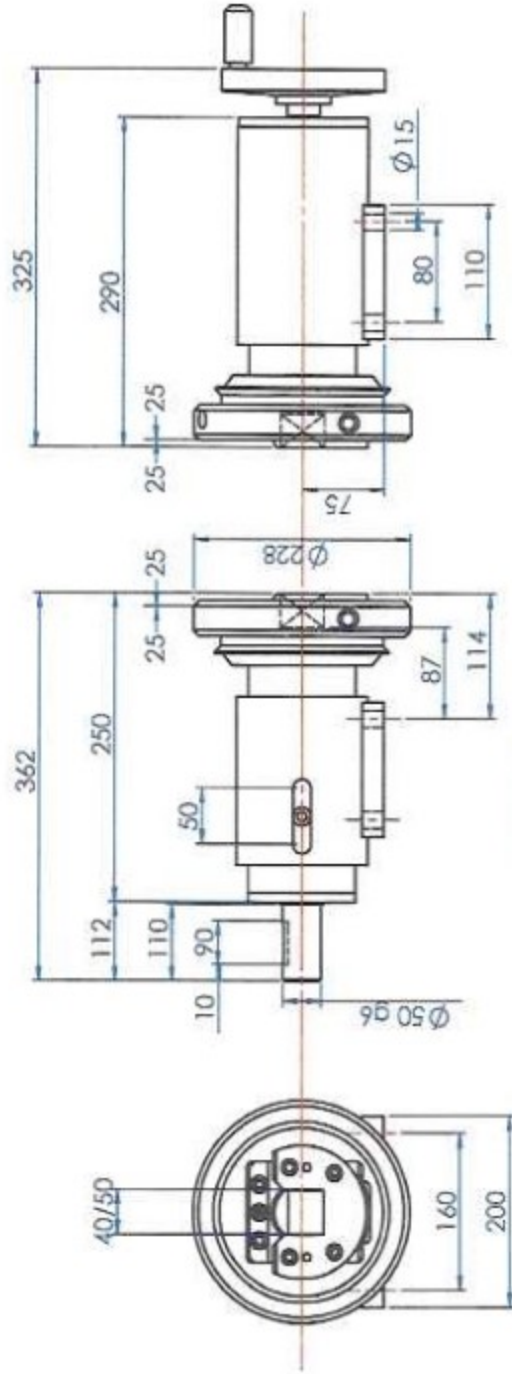
MBC
Guttin

Square : 30 to 40 depth 25

Rollweight : 11000 N

Torque : 350 Nm





SFE/G

SFE



**SAFETY CHUCK SERIE 1150 40/50
STROKE 50**

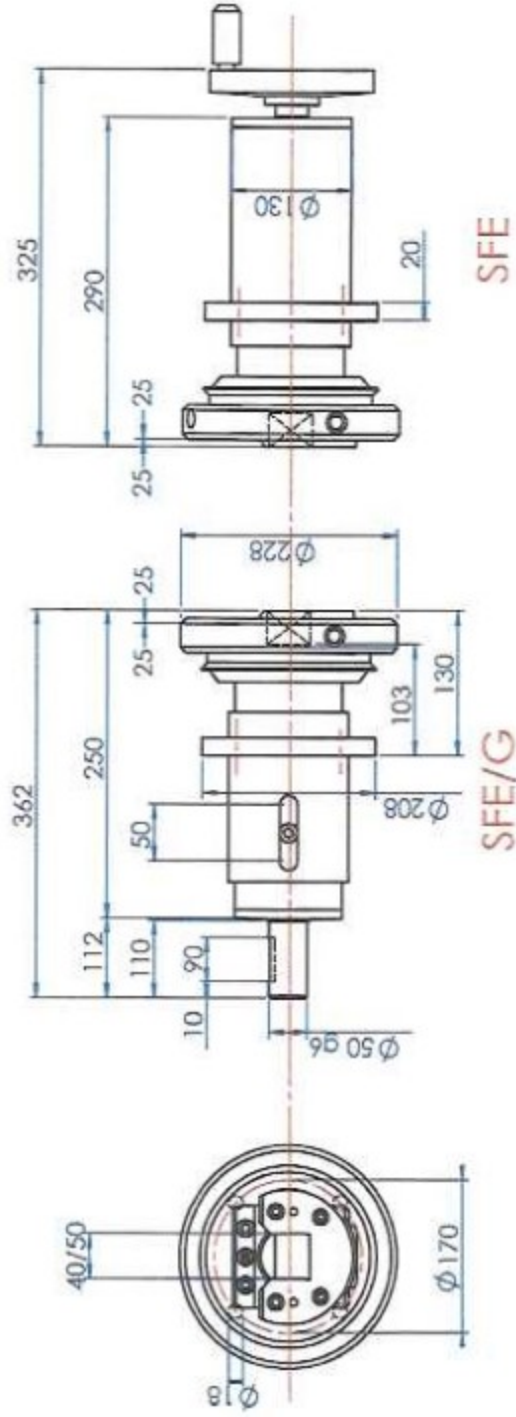
*MBC
Guttin*

Square : 40 to 50 depth 27

Rollweight : 24000 N

Torque : 1100 Nm





**SAFETY CHUCK SERIE 1250 40/50
STROKE 50**

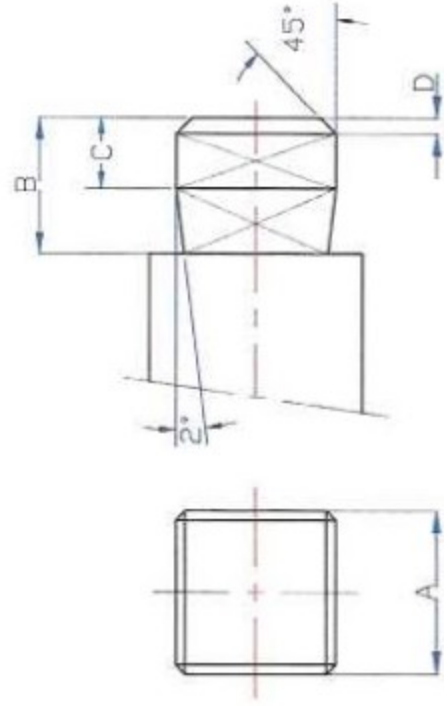
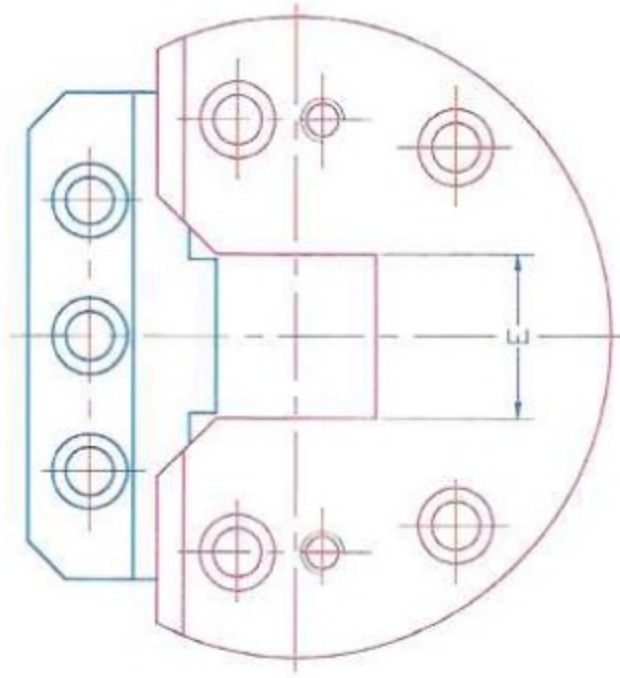
*MBC
Guttin*

Square : 40 to 50 depth 27

Rollweight : 24000 N

Torque : 1100 Nm





	20/30	30/40	40/50	50/80
A	-0.1 -0.2	-0.1 -0.2	-0.1 -0.2	-0.1 -0.2
B	25	28	30	40
C	15	15	18	25
D	3	3	4	5
E	+0.25 +0.1	+0.3 +0.1	+0.3 +0.1	+0.35 +0.1

SAFETY CHUCK WITH

AUTOMATIC LOCKING SYSTEM

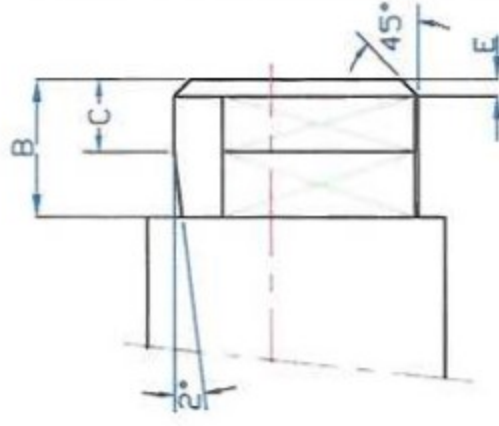
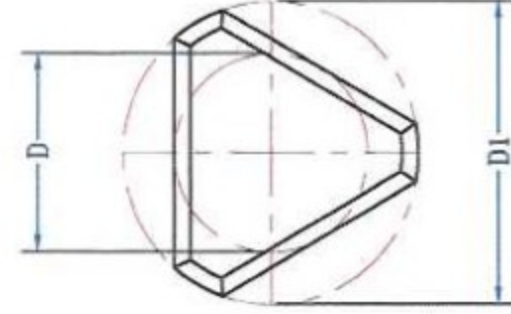
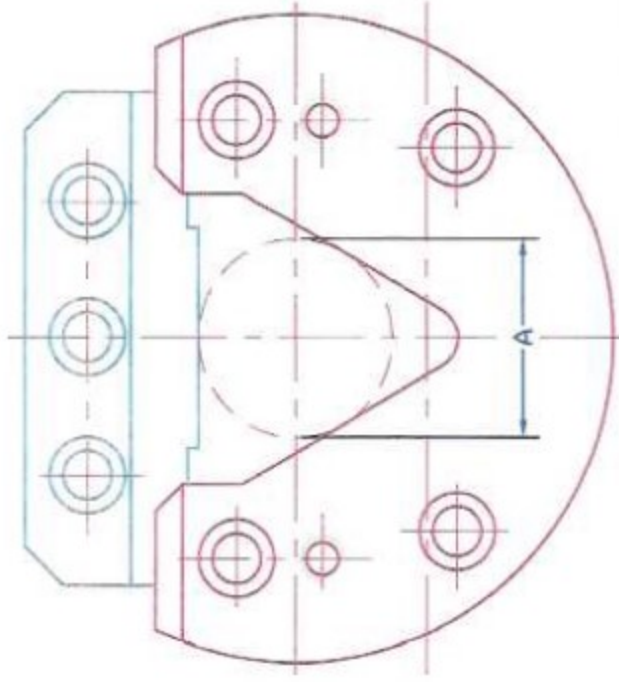
SHAFT END TYPE A and E

WITH SAFETY CHUCK MBC

MBC

Guttin





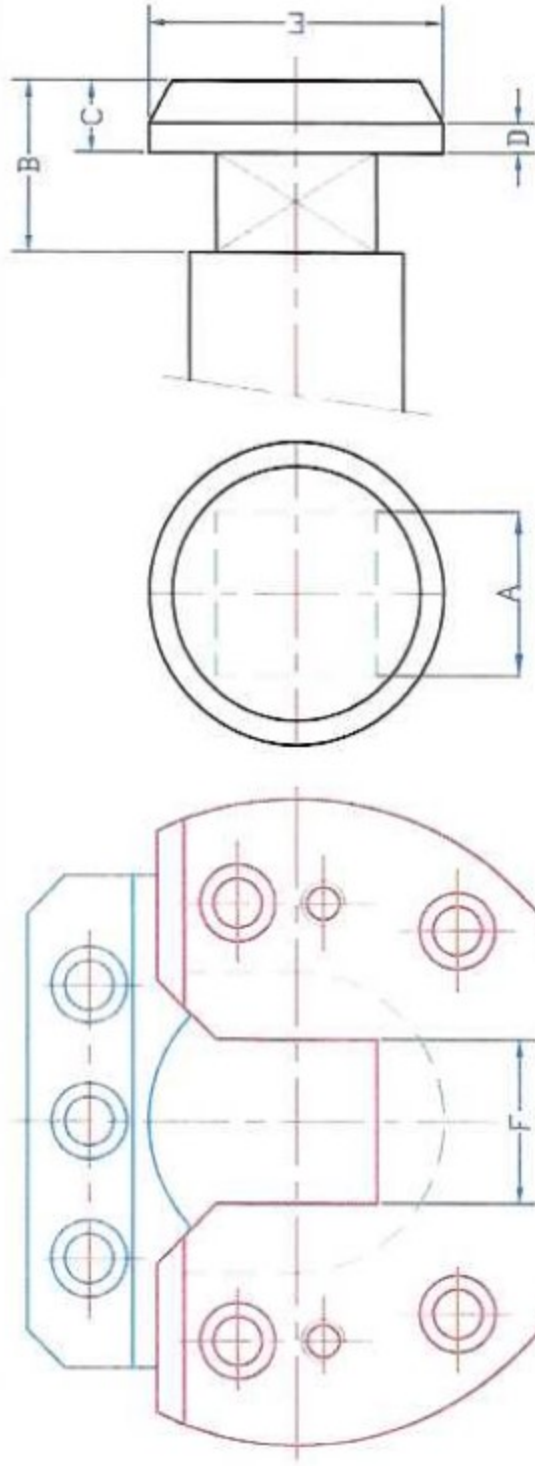
	20/30	30/40	40/50	50/80
A	$D^{+0.2}_{+0.1}$	$D^{+0.2}_{+0.1}$	$D^{+0.2}_{+0.1}$	$D^{+0.2}_{+0.1}$
B	25	28	30	40
C	15	15	18	25
D	$\phi 30^{-0.1}_{-0.15}$	$\phi 36^{-0.1}_{-0.15}$	$\phi 46^{-0.1}_{-0.15}$	$\phi 67^{-0.1}_{-0.15}$
D1	$\phi 45^{-0}_{-0.1}$	$\phi 55^{-0}_{-0.1}$	$\phi 65^{-0}_{-0.1}$	$\phi 104^{-0}_{-0.1}$
E	3	3	4	5

**SAFETY CHUCK WITH
AUTOMATIC LOCKING SYSTEM**

SHAFT END TYPE B
WITH SAFETY CHUCK MBC

*MBC
Guttin*





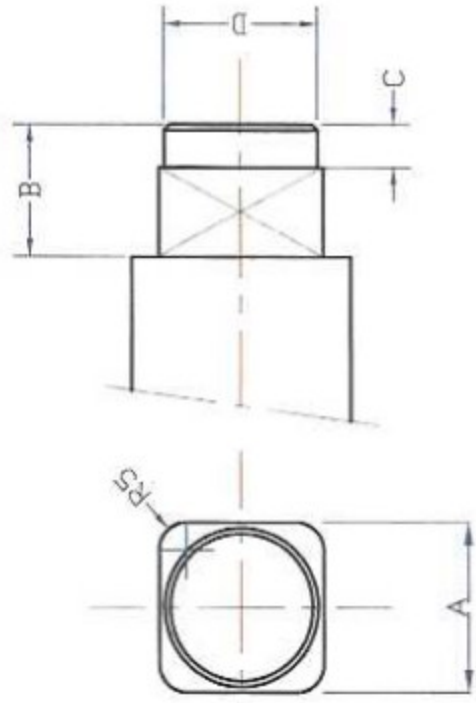
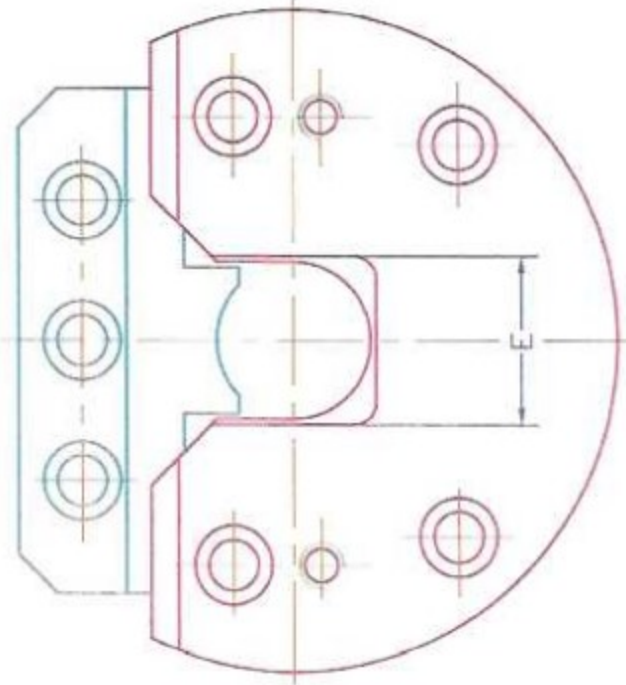
	20/30	30/40	40/50
A	F -0.5	F -0.5	F -0.5
B	31.5	31	35
C	13.5	13	13
D	5.5	5.5	5.5
E	$\phi 42_{-0.05}^0$	$\phi 55_{-0.05}^0$	$\phi 71_{-0.05}^0$
F	$30_{+0.1}^{+0.2}$	$40_{+0.1}^{+0.2}$	$50_{+0.1}^{+0.2}$

**SAFETY CHUCK WITH
AUTOMATIC LOCKING SYSTEM**

SHAFT END TYPE AVPU
WITH SAFETY CHUCK MBC

**MBC
Guttin**





	20/30	30/40	40/50
A	E -0.5	E -0.5	E -0.5
B	24.5	29	30
C	14	18	17
D	$\phi 30_{-0.05}^{-0}$	$\phi 40_{-0.05}^{-0}$	$\phi 50_{-0.05}^{-0}$
E	$30_{+0.1}^{+0.2}$	$40_{+0.1}^{+0.2}$	$50_{+0.1}^{+0.2}$

SAFETY CHUCK WITH

AUTOMATIC LOCKING SYSTEM

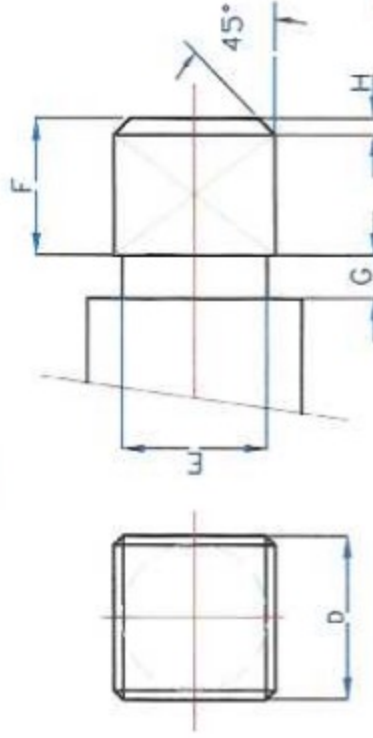
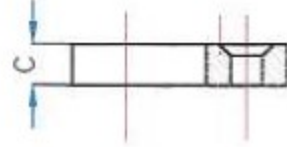
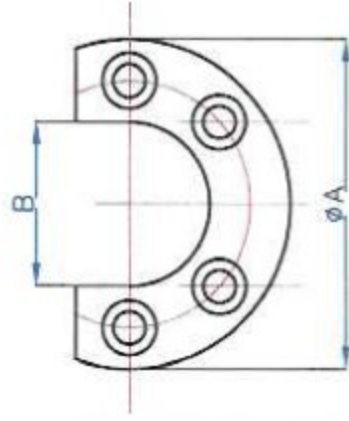
SHAFT END TYPE AWPU

WITH SAFETY CHUCK MBC

MBC

Guttin





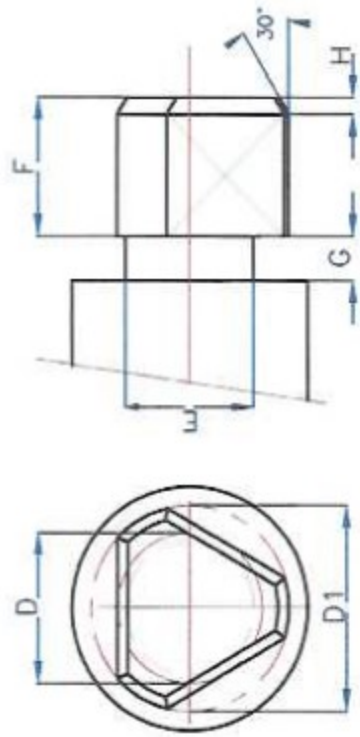
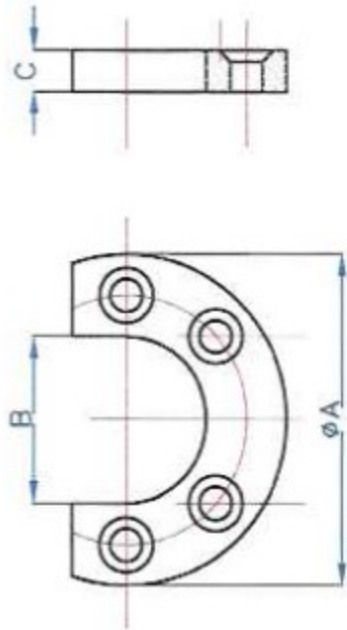
	20/30	30/40	40/50
A	$\phi 89$	$\phi 119$	$\phi 129$
B	$D - 1^{+8.1}_{+8.05}$	$D - 1^{+8.1}_{+8.05}$	$D - 1^{+8.1}_{+8.05}$
C	7	8	8
D			
E	$D - 1^{-8.1}_{-8.2}$	$D - 1^{-8.1}_{-8.2}$	$D - 1^{-8.1}_{-8.2}$
F	21	24	26
G	9	10	10
H	4	5	5

**SAFETY CHUCK with
AUTOMATIC LOCKING SYSTEM**

DRIVING PLATES AND
SHAFT END TYPE A AND E

**MBC
Guttin**





MBC
Guttin

**SAFETY CHUCK WITH
AUTOMATIC LOCKING SYSTEM**
DRIVING PLATES AND
SHAFT ENDS TYPE B

	20/30	30/40	40/50
A	ø89	ø119	ø129
B	D $+0.05$	D $+0.05$	D $+0.05$
C	7	8	8
D	ø30	ø36	ø46
D1	ø45	ø55	ø65
E	D -0.2	D -0.2	D -0.2
F	21	24	26
G	9	10	10
H	5	5	7