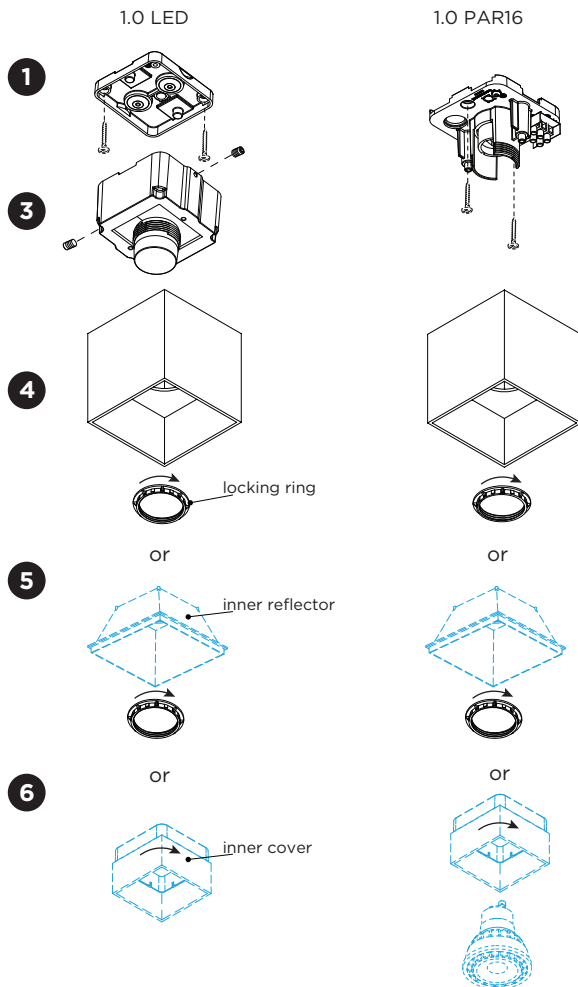
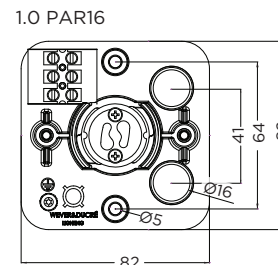
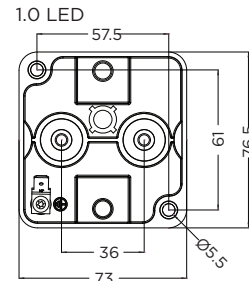


BOX CEILING

INSTALLATION INSTRUCTIONS | AUGUST 2022



base dimensions:



grommets overview table:

	A	B	C
CABLE			
TYPE	ROUND H05RN-F H07RN8-F H07RN-F	ROUND H05RN-F	ROUND
OUTSIDE Ø	min 6.8mm max 8.9mm	min 5mm max 6.8mm	min 1.5mm max 2.6mm
CONDUCTION SECTION	2or3x 0.75mm ² 2or3x 1.0mm ² 2or3x 1.5mm ²	2or3x 0.75mm ² 2x 1.0mm ²	0.75mm ² 1.5mm ²

DIMENSIONS



MOUNTING INSTRUCTION

- For LED: remove the mounting base from the LED module by loosening the socket screws and mount it on the ceiling with screws (screws are not included).
For PAR16: directly mount the mounting base on the ceiling with screws (screws are not included).

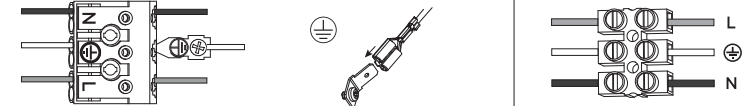
POWER CONNECTION

Connect to 220-240V.

LED version

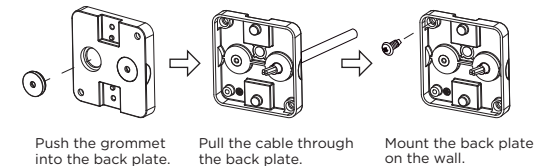
Connect the earth cable.

PAR16 version



For LED: please use a matching grommet based on the used 220-240V cable and the corresponding type in the overview table.

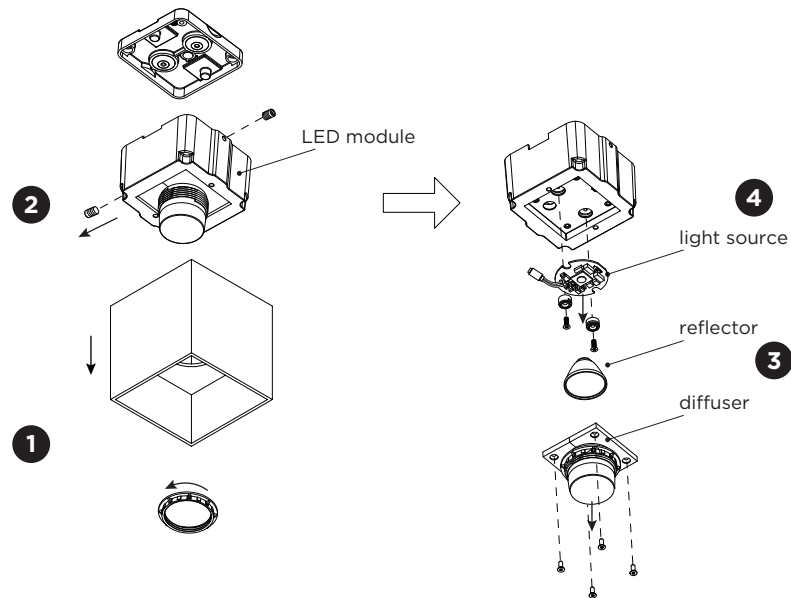
for example:



- For LED: attach the LED housing on the base by the two socket screws.
- For LED: attach the box cover to the LED housing by screwing the locking ring.
For PAR16: attach the box cover to the base by screwing the locking ring.
- OPTIONAL:**
- Inner reflector: attach the reflector to the box cover by screwing the locking ring.
with inner reflector: max. 10W.
- Inner cover: put the inner cover in the outer cover by screwing with inner cover:
max. 10W. (In this case the locking ring is no longer needed.)

BOX CEILING

INSTALLATION INSTRUCTIONS | AUGUST 2022



DISMOUNTING INSTRUCTION only for 1.0 LED

Light source

- 1** Unscrew the locking ring and remove the cover.
- 2** Remove the two socket screws to dismount the LED module from the base.
- 3** Loosen the screws and remove the diffuser and reflector.
- 4** Disconnect the wires, loosen the screws and remove the light source.



The light source is replaceable by an authorized professional.
For advice contact your Wever & Ducré customer service contact point.



This luminaire contains a light source with the energy class G.