

I know that you are excited to start to use your SimDash, but to do it without any issues please take a moment and flow up every step, to ensure that the setup will go as plan.

Here is the link's for files that you are gonna need to download :

⇒ SimHub 7.03.2 or lastest - <https://www.simhubdash.com/download-2/> or <https://www.simhubdash.com/official/SimHub.7.03.4.zip>

⇒ USB480 LCD Drivers - https://drive.google.com/file/d/1PCL_SFoG2PupceRPyvPIIn_D-ISC9Kj/view?usp=sharing (not needed for the XL dash)

⇒ RGB Led CH340 driver (if needed, if in the device manager the USB serial is not detected) - <https://drive.google.com/file/d/1iHuc-cBNmrl6jvhibhelzuAwEj5l8g6a/view?usp=sharing> , just download unzip and run the setup file to install.

⇒ RGB Led's profile file - <https://drive.google.com/file/d/11rULxg9x7Pd-MsFvdLzsnIPJZv2-pie2/view?usp=sharing> (for XL dash check-in XL templates)

⇒ RGB Led's profile file made by @Giuseppe Curri - <https://discord.com/channels/735969324518604923/736323821304414249/851422429284532244>

SimHub is free but if you get a paid license (its a link on the top of their site, you can donate from 5€) then you can explore the full potential of the SimDash like higher frame rate on the LCD, and get access to the discord channel where you can find many dashboards templates and so on.

Optional to change the start-up screen (SimHub cannot be running at the same time) :

⇒ USB480 Setup startup image - <https://drive.google.com/file/d/1-Om1uOIT-1ImQikF1mQZ-op0dgm9oP0g/view?usp=sharing> (this is only for the 4.3" SimDash)

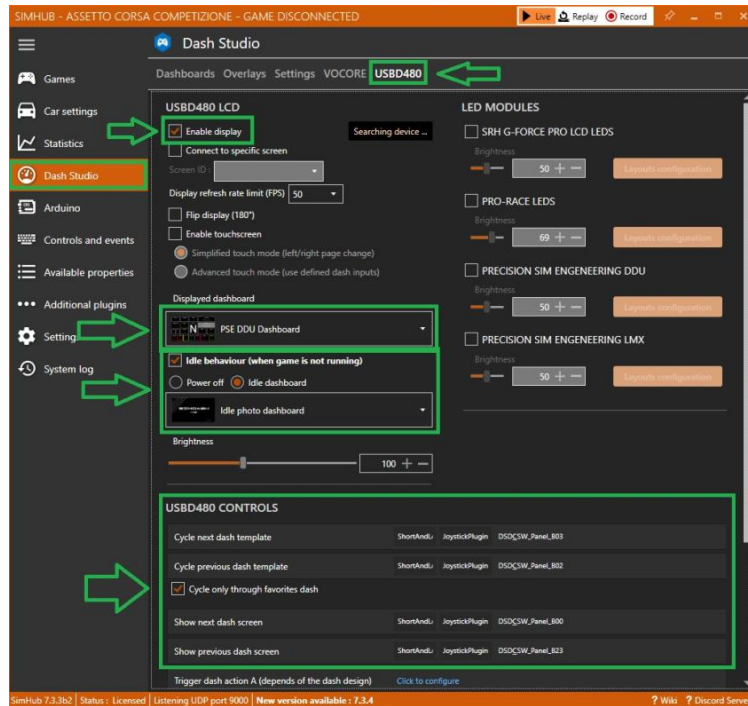
Just extract the zip file, place your image in .png format (with the resolution of 480x272) in the same directory that you extracted the zip file. Then in the command prompt go to the place where you extract the zip files and execute
usb480_set_startup_image.exe name_of_your_file.png

Jaime Santos — 03-02-2021

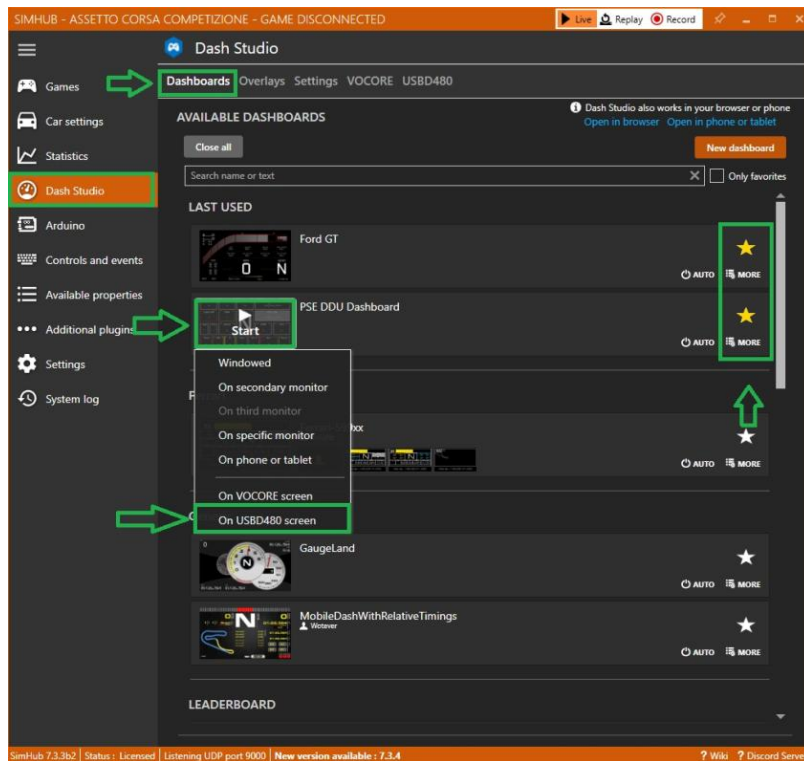
On Dash Studio / USB480 tab check enable USB480 display (this is not applied to the XL dash)

On this same tab, you can choose the default dashboard template and the idle behaviour (off, or use another template)

You can also assign buttons to change the dashboard templates and those that have more than one page to show the next dashboard page.

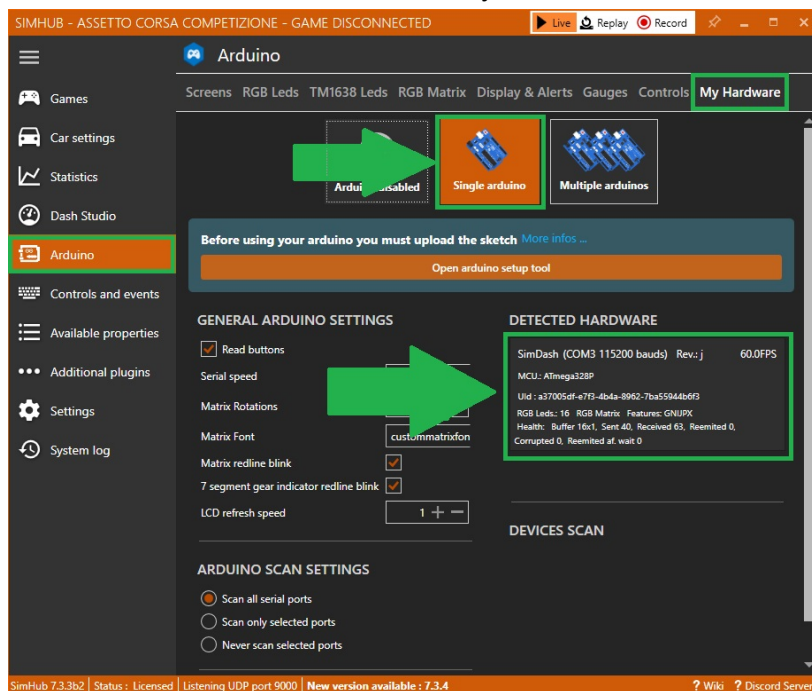


on Dash Studio / Dashboard tab, choose some dashboards as favourites.
 and press start and choose "On USB480 screen" or if XL dash check post bellow (
<https://discord.com/channels/735969324518604923/736304418861088959/857676149043232798>)



on Arduino / My Hardware tab select a single Arduino, and check if the detected hardware shows SimDash.

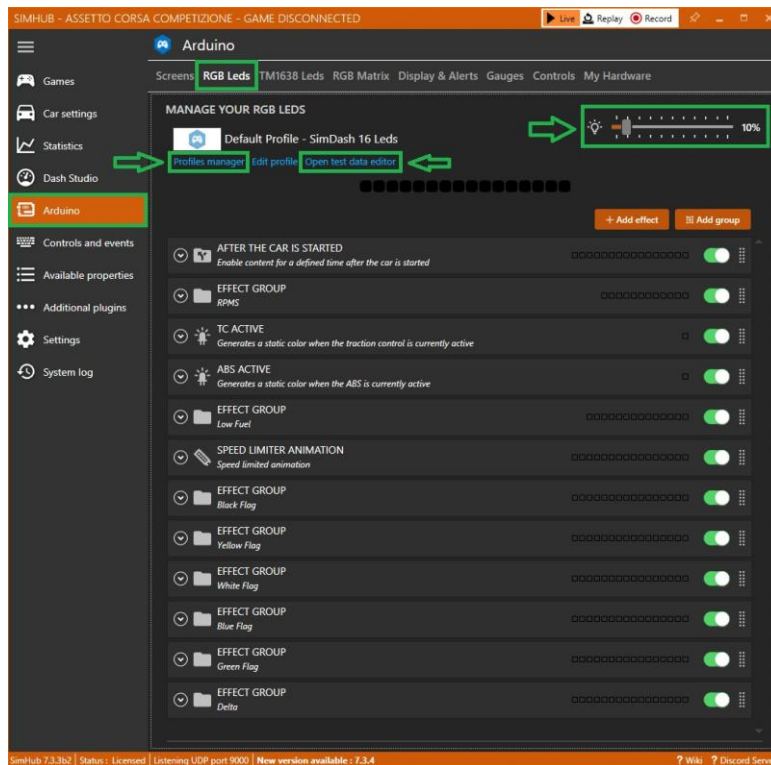
If it doesn't show/detects is because you didn't install the CH340 drivers.



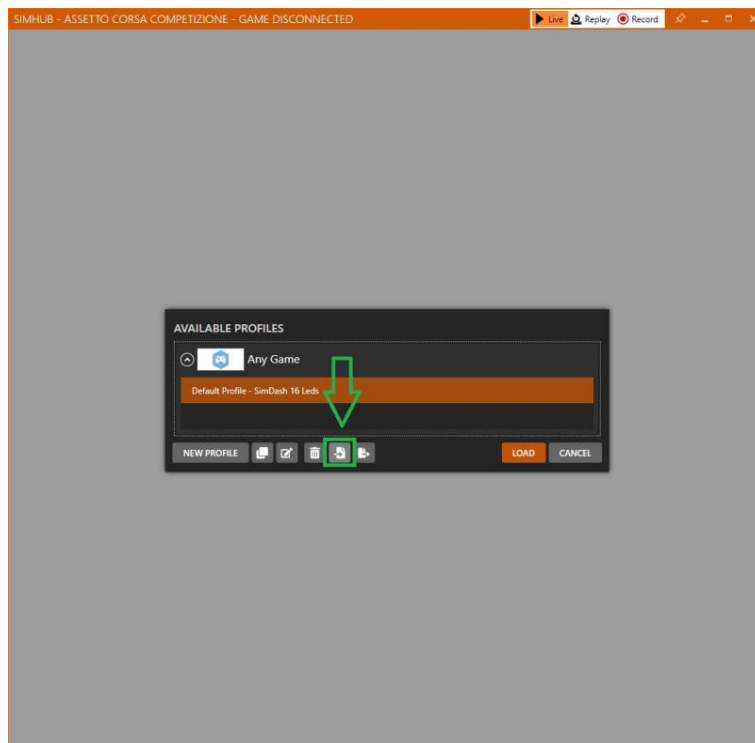
On the Arduino / RGB LEDs tab press profile manager (if you can't see this is because your SimHub must be updated)

We recommend lowering the brightness to 10% since the default is 50% is way too bright.

Click on profile manager



On available profiles, select import profile, and point to the SimDash file that you had downloaded before, and click load.



One way to test if the Led's are running correctly is going to the Open data test monitor.
And test the "effects" that are configured in that profile that I had to provide.
You can always change the profile to your like.

The screenshot shows the 'LED TEST DATA EDITOR' window. It features several sections with checkboxes and sliders. Green boxes highlight the following areas:

- Engine:** A slider for 'RPMS' and checkboxes for 'RPMS redline reached' (checked) and 'Low fuel alert (remaining laps)'.
- Pits:** A checkbox for 'Pit limiter ON'.
- Delta:** A slider for 'Session delta' ranging from 'Loss' to 'Gain'.
- Assists:** A group of checkboxes including 'ABS active' (checked), 'TC active' (checked), and 'DRS enabled'.
- Flags:** A group of checkboxes for 'Black flag', 'White flag', 'Green flag', 'Yellow flag', and 'Blue flag'.

Other visible settings include 'Use test data' (checked), 'Game status' (Game running checked), 'Car model' (dropdown), 'GEAR' (slider), 'Is in pit lane' (checkbox), 'Turn indicators' (Left ON, Right ON), and 'Spotter' (Car left, Car right).

If you have any issues or difficulties, please do not hesitate to contact us at info@simplace.co.