

SILENT ROOM

Troubleshooting manual

narbutas.com



Other documents available for this product

Technical information for SILENT ROOM S, M, L, XL

Ordering guidelines for SILENT ROOM

User manual for SILENT ROOM

Technical guide for SILENT ROOM

Table of contents

Read me first 3

Safety 3

Usage restrictions 3

Control box layout 4

Troubleshooting 5

Power issues 5

Fans and lights issues 5

Door issues 7

Sound insulation issues 8

Did not find what you were looking for?

Please use the SILENT ROOM Technical guide to find the assembly instructions and operating instructions:

instructions.narbutas.com/Silent_room_technical_guide.pdf →

Safety

! This is a short overview of the key safety guidelines. For more information please carefully read the **User manual** →

- The pod is designed for indoor use only, where the humidity level is lower than 60%.
 - Always disconnect the pod from the power outlet before performing any maintenance.
 - Do not connect any devices with high power consumption, such as vacuum cleaners, heaters, tea kettles, etc., to the power outlets of the product.
 - Do not lean against the acoustic walls.
 - Do not cover fan grills on the ceiling when the ventilation is working.
 - Do not attach any items on the doors as they do not support weight.
- Connect the power cord to a properly grounded outlet only.
 - Do not connect any extension cords to the power outlets of the product.
 - Do not place objects heavier than 5 kg on the ceilings of the pod.
 - Avoid colliding into glass inserts with other objects made from hard materials such as metal, ceramics or glass.
 - Do not smoke in the pod.
 - Turn OFF control box power switch before installing devices such as monitor or TV.

Usage restrictions

25^{kg}

Maximum load for SILENT ROOM S table

50^{kg}

Maximum load for SILENT ROOM M, L and XL tables

110^{kg}

Maximum load for SILENT ROOM pouf with backrest

10^{kg}

Maximum load of the monitor holder

27"

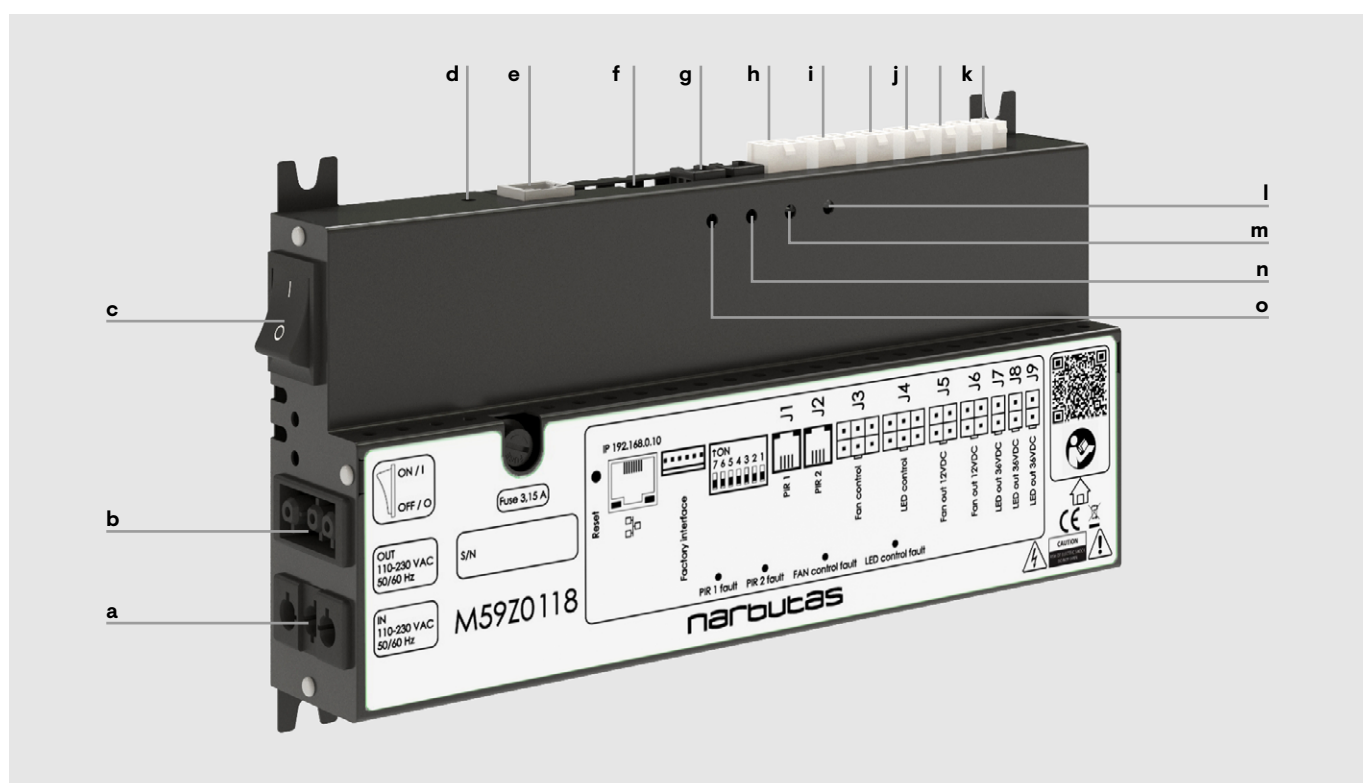
Maximum recommended screen size for SILENT ROOM M

32"

Maximum recommended screen size for SILENT ROOM L and XL

Control box layout

Control box is located behind the opening lid of internal front central wall. Input for the electrical system: 100-240 VAC, 50-60Hz. Power ON/OFF switch is on the top left side. Every electric device is powered via this controller. Power consumption – max. 229W, standby 4,5W.



a _____
AC power IN socket

b _____
AC power OUT socket

c _____
Power ON/OFF switch

d _____
RESET button for restoring factory settings (press and hold for 2 sec.)

e _____
RJ45 connector for individual system adjustment

f _____
DIP switch for dedicated system configuration according to model

g _____
RJ10 connectors for PIR – passive infrared sensors or motion sensors (J1, J2)

h _____
Six-pole connector for ventilation controller (J3)

i _____
Six-pole connector for light controller (J4)

j _____
Four-pole connectors for fans DC power cord (J5, J6)

k _____
Two-pole connectors for LED DC power cord (J7, J8, J9)

l _____
LED indicator for light controller fault (J4 fault)

m _____
LED indicator for ventilation controller fault (J3 fault)

n _____
LED indicator for PIR 2 fault (J2 fault)

o _____
LED indicator for PIR 1 fault (J1 fault)

Power issues

There is no electricity in the pod (power outlet, fans and lights are not working)

- A

Check if the control box power switch is ON (see control box layout **c**).
- B

Check if the control box AC power cord is connected (see control box layout **a**).
- C

Check if the power cord is connected to a power outlet properly.

There is no electricity in the power outlet (lights and ventilation are working)

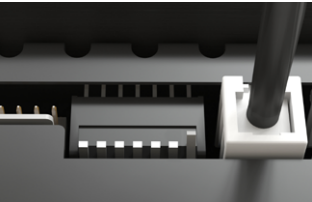
Check if the power outlet AC cord is connected to the power OUT socket of the control box properly (see control box layout **b**).

Fans and lights issues

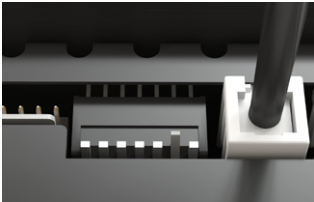
Lights and (or) ventilation are not working (power outlet is working)

- A

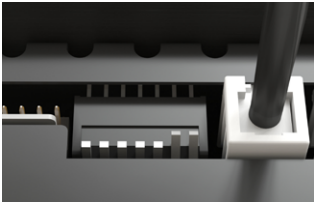
Check DIP switch (see control box layout **f**). Depending on the SILENT ROOM model, it should be adjusted as follows:



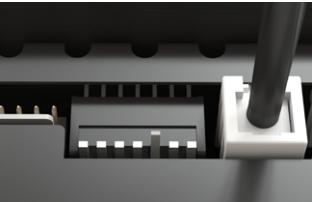
SILENT ROOM S



SILENT ROOM M



SILENT ROOM L



SILENT ROOM XL

- B

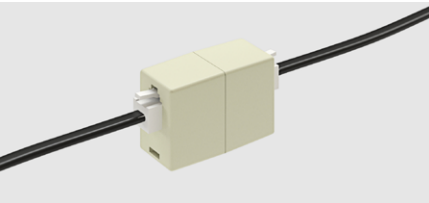
Check if control box J5 – J9 connectors are secured with dedicated DC cords (see control box layout **j, k**).
- C

Check if there are no PIR faults (see control box layout **n, o**).
- D

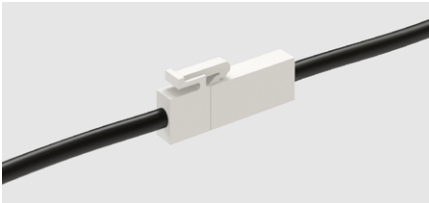
Check if the J1 connector of the control box is secured with dedicated cord (see control box layout **g**).

- E

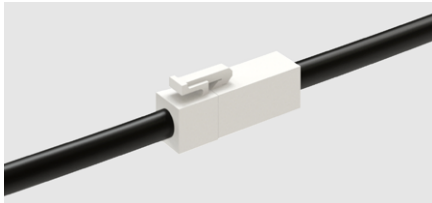
Check if ceiling DC cords are connected with control box DC cords as pictured below:



PIR connection



Light connection



Ventilation connection

One or several lights are not working (fans work normally)**01** _____

Turn off the power switch (see control box layout c).

02 _____

Check if DC cords are securely connected to the J7, J8, J9 in the control box (see control box layout k).

03 _____

Check if ceiling light DC cords are connected with control box light DC cords (see the light connection picture).

04 _____

Gently pull out the light from the ceiling.

**05** _____

Check if connectors are securely connected.

06 _____

If any of the cords are missing or broken, please contact NARBUTAS support for the replacement part.

07 _____

If all of the above are correctly connected it is likely that there is an issue with the LED light itself. See LED replacement instruction here: instructions.narbutas.com/var/docs/M60ES124.pdf →

One or both fans are not running (lights work normally)**01** _____

Turn off the power switch (see control box layout c).

02 _____

Check if DC cords are securely connected to the J5, J6 connectors of the control box (see control box layout j).

03 _____

Check if ceiling ventilation DC cords are connected with control box ventilation DC cords (see the ventilation connection picture).

04 _____

Unscrew the M4x10 (4 pcs.) and take out the fan module.

**05** _____

Check if connectors are securely connected.

06 _____

Contact NARBUTAS support if the replacement part is required.

07 _____

If all of the above are correctly connected it is likely that there is an issue with the fan itself. See fan replacement instruction here: instructions.narbutas.com/var/docs/M60ES125.pdf →

One or both dimming knobs are not working

01

Check if there is no FAN or LED control faults (see control box layout **l, m**).

03

Press and hold the RESET button for 2 sec. (see control box layout **d**).

05

See dimming controller replacement instruction here:
instructions.narbutas.com/var/docs/M60ES126.pdf →

02

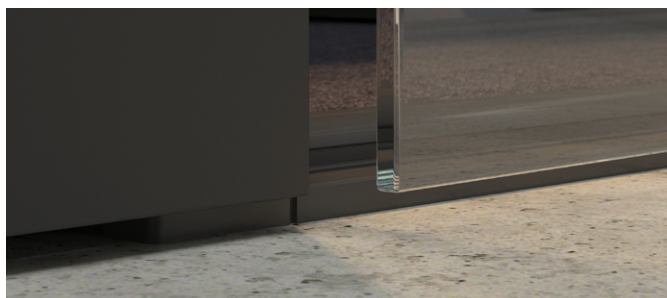
Check if the J3, J4 connectors of the control box are secured with dedicated cords (see control box layout **h,i**).

04

Contact NARBUTAS support if the replacement part is required.

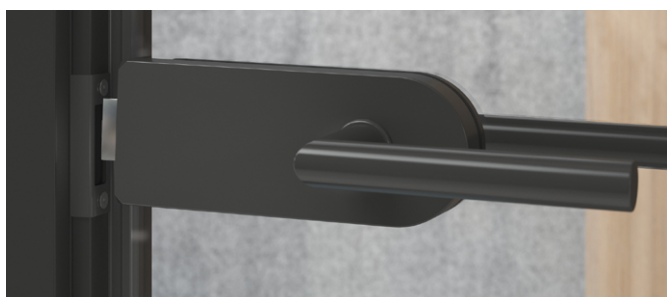
Door issues

The door glass has slid down and touched the bottom of the door frame.



See the door height adjustment instruction here:
instructions.narbutas.com/var/docs/M60ES123.pdf →

The door latch doesn't align with the hole in the strike plate.



See the door lock adjustment instruction here:
instructions.narbutas.com/var/docs/M60ES137.pdf →

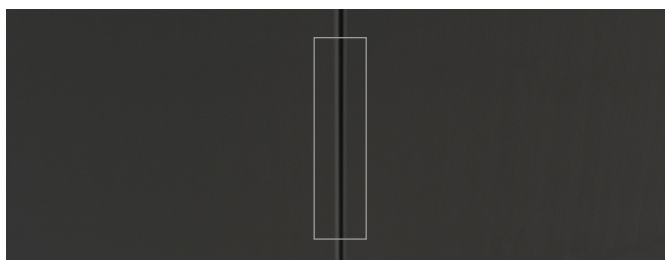
Sound insulation issues

Sound leakage from the ceiling

A Check if there are no gaps between walls and ceiling modules. Panels should lay down on vertical construction supports evenly. The top of the ceiling will be visible about 3 mm.



B Check if there are no gaps between ceiling modules. Applicable only for SILENT ROOM M, L and XL.



Sound leakage from the door

01 Check if the door fits evenly to the sealing gasket. The door segment should be precisely vertical.

02 If it is necessary, adjust door height according to instruction: instructions.narbutas.com/var/docs/M60ES123.pdf →

Sound leakage through the space between the floor and walls modules

A If the pod is used on a hard floor, consider installing a carpet.



B Uneven floors can create larger gaps (>10 mm) between the floor and the construction of the product. In this case, move the pod to a proper location.

