



Soft Care All Purpose Mini Guide

Available in 1.3L cartridge



Use for washing:



Hands

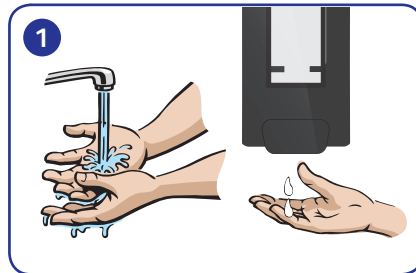


Ready to use cartridge through an IntelliCare dispenser

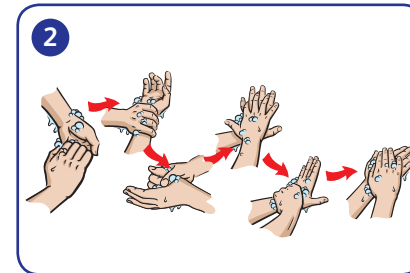


Perfumed

Application...



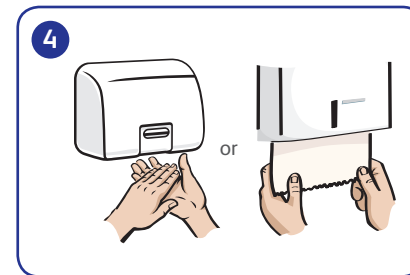
Wet hands with lukewarm water and apply one or two doses of product from dispenser.



Rub to form a rich lather and wash for at least 60 seconds.



Rinse well with water.



Dry hands thoroughly. Dry hands are crucial for maintaining good hand hygiene and for keeping skin in a good, healthy condition.