



**MEDIFRIDGE®**

MedEasy line

**MF140L-CD LAB**



## MF140L-CD Laboratory refrigerator MedEasy Line

### General specifications

DIN 58345	No
Dimensions outside (bxdxh)	600 x 600 x 835 mm
Dimensions inside (bxdxh)	480 x 410 x 690 mm
Air circulation	Forced
Cool system	Compressor cooling
Defrost system	Automatic
Temperature range	2 - 8 °C
Standard temp. setting	5 °C
Material	Steel / White
Material inside	Steel / White
Material door	Steel
Type of control	Electronic
Type of controlpanel	Touch key
Type read out	Digital
Potential-free alarm contact	Yes
Light inside	Yes

### Alarms

Opendoor alarm	Yes
High/low alarm	Yes
Fault signal	Yes

### Storage

Volume	140 litre
Number of shelves	3 pieces

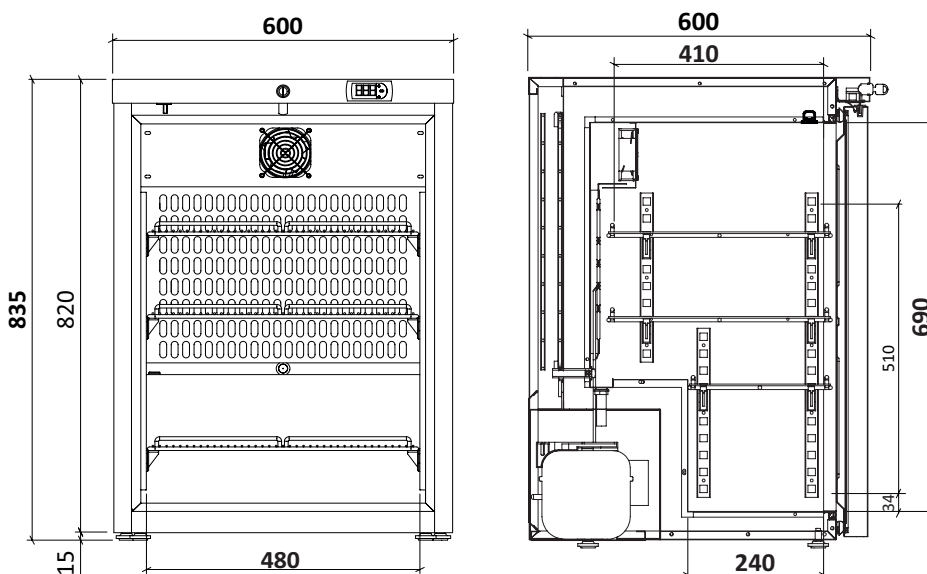
## Functions

Frost protection	Yes
Evaporator protection	Yes
Porthole	Yes
Placeable against wall	Yes
Noise level	< 45 dB(A)
Lock with key	Yes
Door hinge	Right (changeable)
Temperature datalogger	No
Type readout logger	N/A
Calibration	N/A
Power failure detector	No
Battery backup	No
Temp. registration after powerfailure	No
Netto weight	52 Kg
Feet	Yes
Refrigerant	R600A
Connection value	230 Volt 50 Hz

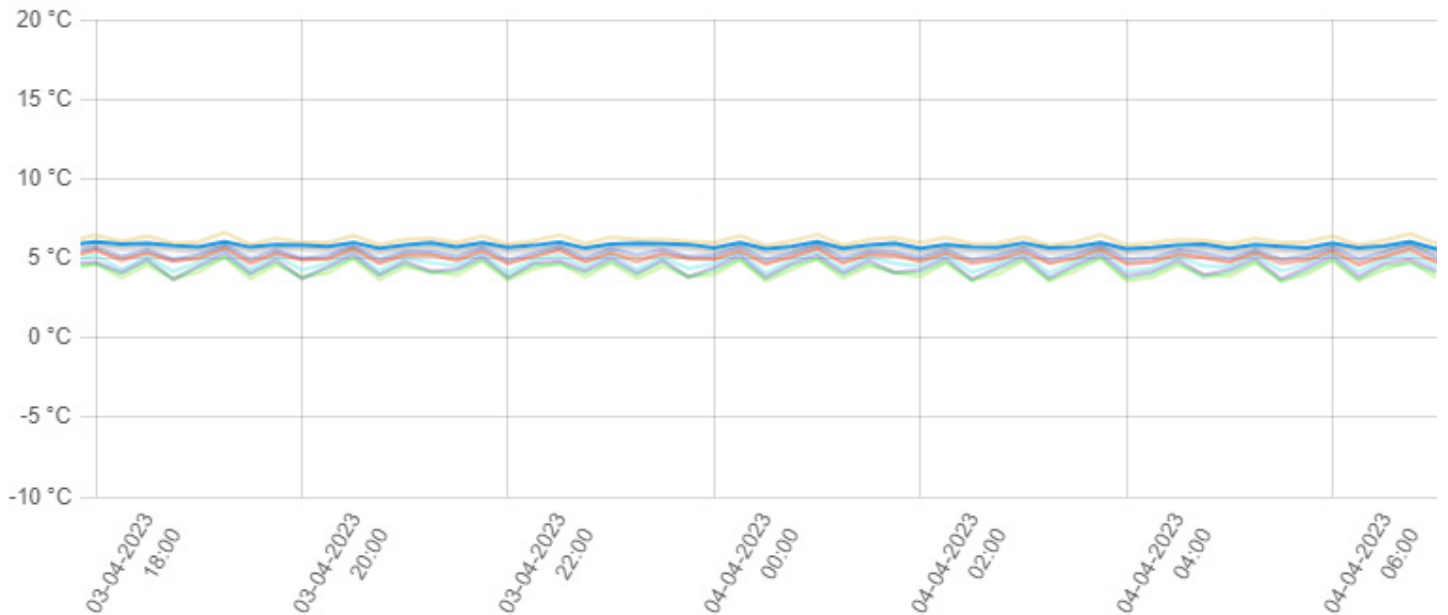
## Options

	<b>Articlenumber</b>
Shelf small	007119
Shelf big	007119_001

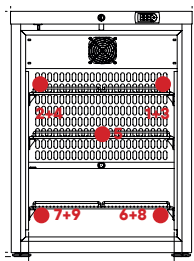
## Technical drawings



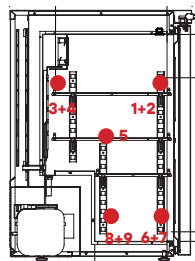
## 9-punts metingen



### Sensor positionering



Voor aanzicht



Zij aanzicht

### Metingen

Sensor positie	1	2	3	4	5	6	7	8	9
<b>Gem.</b>	5,1	4,7	4,2	4,5	6,1	5,3	4,3	5,1	5,8
<b>Min.</b>	4,6	4,1	3,6	3,7	5,8	4,9	3,5	4,7	5,6
<b>Max.</b>	5,6	5,5	5,1	5,3	6,6	5,9	5,1	5,6	6

### Conditie

Uitvoering test:	9-punts meting
Test omgeving:	Lege kast
Omgevingstemperatuur:	20°C
Setpoint koelkast:	5°C
Nauwkeurigheid sensoren:	± 0,2°C