

PARTICULAR MAINTENANCE

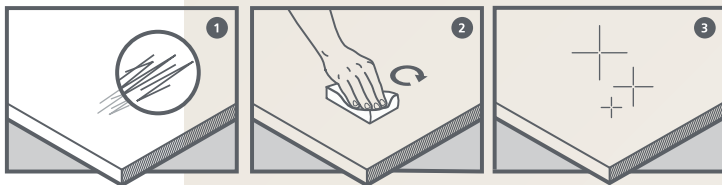
If the dirt cannot be removed with regular cleaning agents, we recommend using a non-aggressive solvent (acetone). For minor scratches, please refer to the specific repair instructions using heat.

TIPS FOR DAILY MAINTENANCE

For daily maintenance, we recommend cleaning the surface with a melamine foam sponge to ensure proper surface restoration.

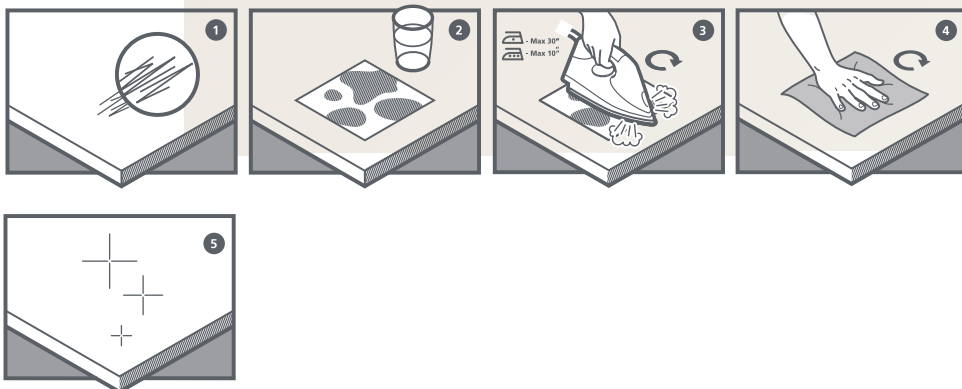
CARE INSTRUCTIONS: MELAMINE FOAM SPONGE

1. Superficial damage due to micro-scratches.
2. Rub the surface with the micro-scratches with a dry or slightly damp melamine sponge to remove the scratches from the surface with heat.
3. The surface should now be repaired.



CARE INSTRUCTIONS: IRON

1. Superficial damage due to micro-scratches.
2. Place a damp paper towel or tea towel on the scratched surface.
3. Place the iron on the area to be repaired.
Do not hold it in one place for more than 10 seconds.
4. Clean the repaired surface with lukewarm water and a clean microfiber cloth.
5. The surface should now be repaired.



GUIDELINES FOR USE

SOLID WOOD

Solid wood has been used for centuries for a wide range of home applications. Generations have enjoyed this versatile and natural material, now it's your turn. Unlike artificial materials, the special and unique properties of wood give it its own character. Knots, cracks, scratches, grain, reflections, and textures are inherent in the material, resulting from the conditions in which the tree grew. Therefore, the wooden product examples shown in our web-shop and showroom will never be identical to the delivered product.

WORK OF WOOD

Wood reacts to the humidity in the air, which in turn is related to temperature. For trouble-free use of wood indoors, a relative humidity of 50%-60% is important. Because wood absorbs or releases moisture from the air, it will expand and contract. The seasons cause constant fluctuations in humidity.

Please note: At certain times of the year, the table may be concave or convex upon delivery. Within four weeks, the table will visibly change to a flatter surface as it acclimates to the humidity in your home.

DAILY USE

- Protect the table from heat, moisture, and dyes from food and drinks.
- Use placemats or tablecloths to prevent scratches and stains.
- Prevent scratches from abrasive surfaces by using felt pads.

OILED

CHARACTERISTIC

- Natural tabletop
- Oil penetrates the tabletop
- Moisture can penetrate the tabletop. Not suitable for leaving wet objects on
- Easy to maintain by lightly sanding and oiling
- Maintenance recommendation: oil once or twice a year

CLEANING & DAILY MAINTENANCE

The less cleaning agent you use, the longer the oil will protect the wood of your table. For daily maintenance, use a clean dishcloth, dampened in clean, lukewarm water and thoroughly wrung out. Do not use harsh or abrasive cleaning agents. Wet cloths, cups, vases, etc., cause stains and rings. Spills should be wiped up immediately. Avoid excessive water on the top.

The top is factory-finished with a layer of oil, so the table can be used immediately for its intended purpose.

Note: The oil only provides optimal protection 20 days after the last treatment, as it has fully cured. Therefore, be extra careful during the first three weeks.

MAINTENANCE

Care and maintenance ensure a lifetime of enjoyment from our solid wood tables. Use the sanding pad and oil from our maintenance kits for annual table maintenance. These are available in our store or online store. This ensures a protected surface that feels smooth. Minor damage to your tabletop can be repaired.

1. SAND DOWN

- For the best result, first sand the table with a 300-grit sanding pad.
 - Always sand the table lengthwise, along the grain.
- (Otherwise, you'll get scratches!)

Scratch tip: Keep sanding until the scratches are gone.
Be careful not to create a dent in the table.

2. OIL

- Dust the table with a slightly damp cloth.
- Then, soak the sponge generously in the oil and rub the table with long strokes (including the edges and butt joints).
- Let the oil soak in for 5 minutes.
- Then, take a cloth and try to rub off any remaining oil from the table (you can scrub vigorously).
- Let the oil soak in for 30 minutes.
- Then, take a new cloth and rub the table again.

LACQUERED

CHARACTERISTIC

- Smooth tabletop
- Lacquer is applied to the tabletop
- Less scratch-resistant than oiled tables
- More moisture-resistant than an oiled table. Easy to clean
- A low-maintenance table
- Scratches in the tabletop are more difficult to repair yourself

REINIGEN EN DAGELIJKS ONDERHOUD

For daily maintenance, use a clean dishcloth, dampened in clean, lukewarm water and thoroughly wrung out. Use a mild soap solution if necessary. Although lacquer is more moisture-resistant than oil, prolonged contact with water or other liquids can cause stains and rings. Be careful with wet cloths, cups, or vases. Abrasive cleaners, rough sponges, or cleaning equipment are strongly discouraged.

Abrasive cleaning agents are also not suitable for removing stains. Be careful with hot objects and heat sources. The top is factory-finished with a lacquered finish, so the table can be used immediately for its intended purpose.

Note: The paint only provides optimal protection 20 days after the last treatment, as it has fully cured. Therefore, be extra careful during use, especially during the first three weeks.

CHARACTERISTIC

- Antibacterial/hygienic: easy to clean
- Fingerprints are invisible on the table
- Soft surface: soft touch
- Extremely matte finish
- Non-static
- Self-healing: Small scratches are easily removed with a magic eraser.

NORMAL MAINTENANCE

The Fenix surface should be cleaned regularly, but requires no special maintenance: a cloth with warm water and/or a mild detergent is sufficient. Almost all standard household cleaners and disinfectants are suitable. We recommend using a melamine foam sponge, also known as a magic sponge, for regular cleaning and surface maintenance.

FENIX